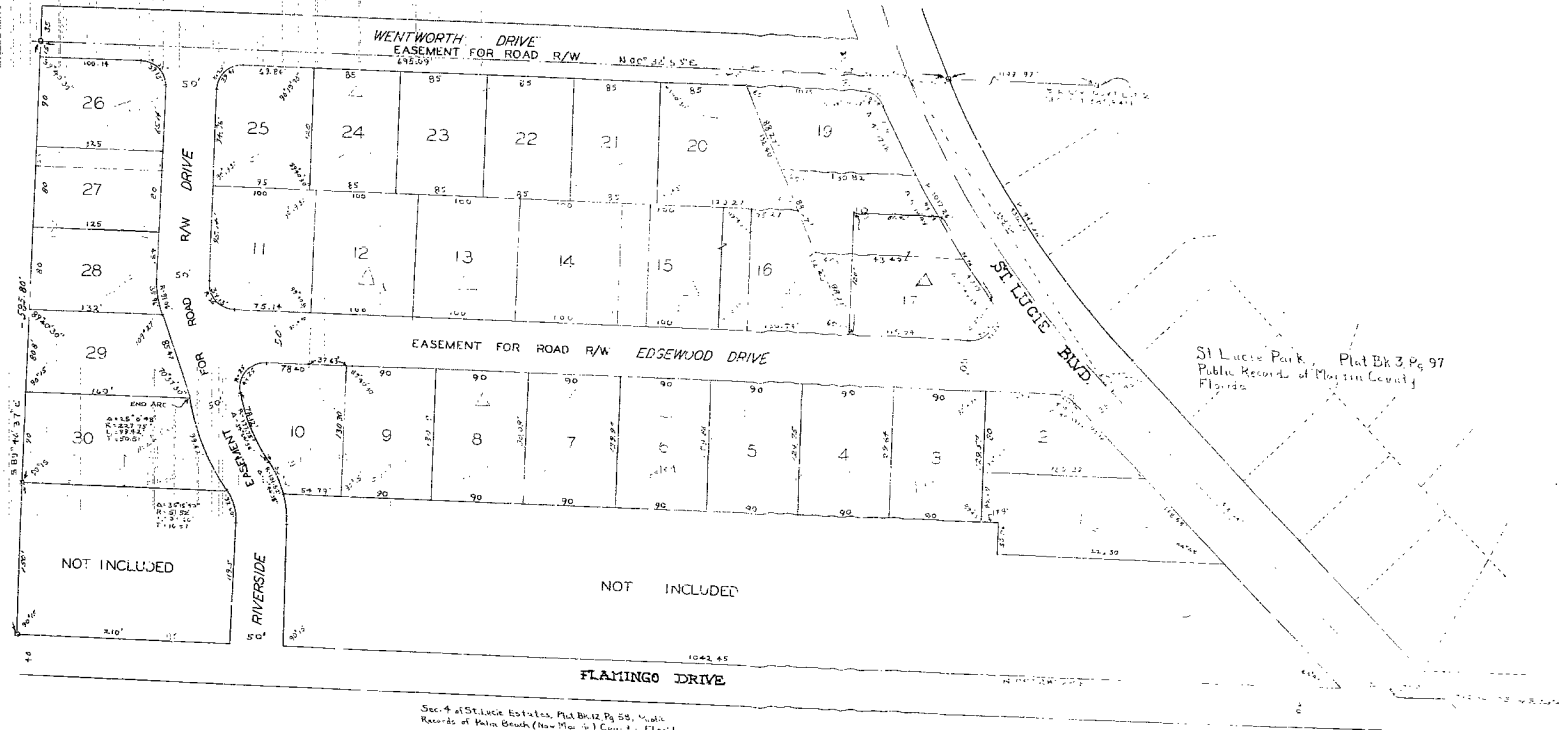


UNRECORDED PLAT OF AN ADDITION TO

ST. LUCIE PARK

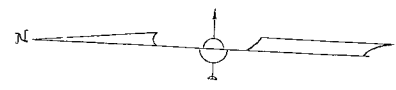
A SUBDIVISION OF A PART OF THE E 1/4 585.4 FEET OF GOV'T. LOT 2 SECTION 3, T. 38 S., R. 41 E.,

MARTIN COUNTY,
FLORIDA
MAY 23, 1961 SCALE 1"=100'



St. Lucie Park, Plat Bk 3 Pg 97
Public Records of Martin County
Florida

Sec. 4 of St. Lucie Estates, Plat Bk 12 Pg 55, 56, 57, 58
Records of Palm Beach (New Map 5-1) County, Florida



I Hereby Certify that the plat shown herein is a true and correct representation of a survey made under my direction and that survey was accurate to the best of my knowledge and belief.

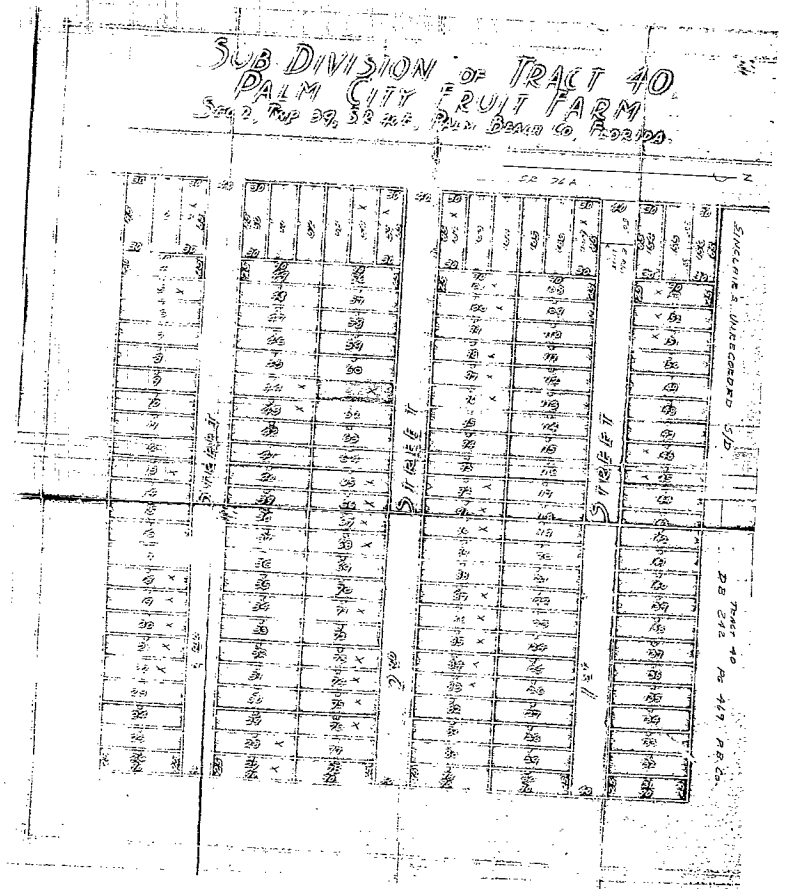
Hubert S. Stafford
REGISTERED LAND SURVEYOR
FLORIDA CERTIFICATE NO. 2282

22:1

CONDITION OF DOCUMENT:
UNSUITABLE FOR MICROFILMING

STAFFORD & BROCK
ENGINEERS - SURVEYORS
STUART, FLORIDA

Sincl



Lt 155 *Red* Sinclair Unrecorded

PLAT OF THE SUBDIVISION OF TRACT 40 PALM CITY FRUIT FARM
Sec. 2, Twp. 29, S. 33, R. 25, Palm Beach Co., Florida
AS SHOWN ON THE PLAT OF THE PALM CITY FRUIT FARM
RECORDED IN THE PUBLIC RECORDS OF PALM BEACH COUNTY, FLORIDA
IN BOOK 10, PAGE 117, 18.25 AC.
AND AS SHOWN ON THE PLAT OF THE PALM CITY FRUIT FARM
RECORDED IN THE PUBLIC RECORDS OF PALM BEACH COUNTY, FLORIDA
IN BOOK 10, PAGE 117, 18.25 AC.
AND AS SHOWN ON THE PLAT OF THE PALM CITY FRUIT FARM
RECORDED IN THE PUBLIC RECORDS OF PALM BEACH COUNTY, FLORIDA
IN BOOK 10, PAGE 117, 18.25 AC.

20:1

CONDITION OF DOCUMENT
UNSATISFACTORY FOR MICROFILMING

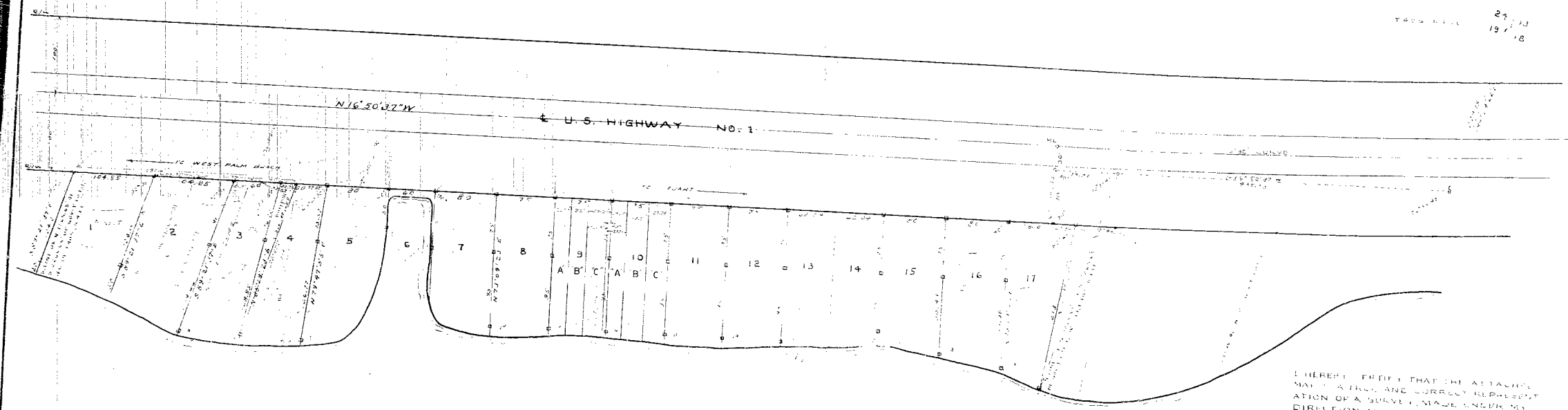
"Sandy Depths"
LOUIS J. SCHNEIDER'S SUBDIVISION

A DIVISION OF THE NORTH 1265.45 FEET OF THE SOUTH 1265.45 FEET
OF GOVERNMENT LOT 1, SECTION 19, TWP 40 SOUTH, RGE 43 EAST

MARTIN COUNTY, FLORIDA.

SCALE 1" = 60'

27 13
19 18



STAFFORD BROCK
ENGINEERING-LAND SURVEYING
124 EAST 4th STREET
STUART, FLORIDA
FEB. 5th. 1960

HOLE SOUND - INTRACOASTAL WATERWAY

20:1

I HEREBY CERTIFY THAT THE ATTACHED
MAP IS A TRUE AND CORRECT REPRESENT
ATION OF A SURVEY I MADE UNDER MY
DIRECTION AND THAT SAID SURVEY
WAS ACCURATE TO THE BEST OF MY
KNOWLEDGE AND BELIEF

James E. Brock
REGISTERED LAND SURVEYOR
NO. 12345

OR 138-579 Shows this Survey

CONDITION OF DOCUMENT
UNFIT FOR MICROFILMING

ST. LUCIE PARK

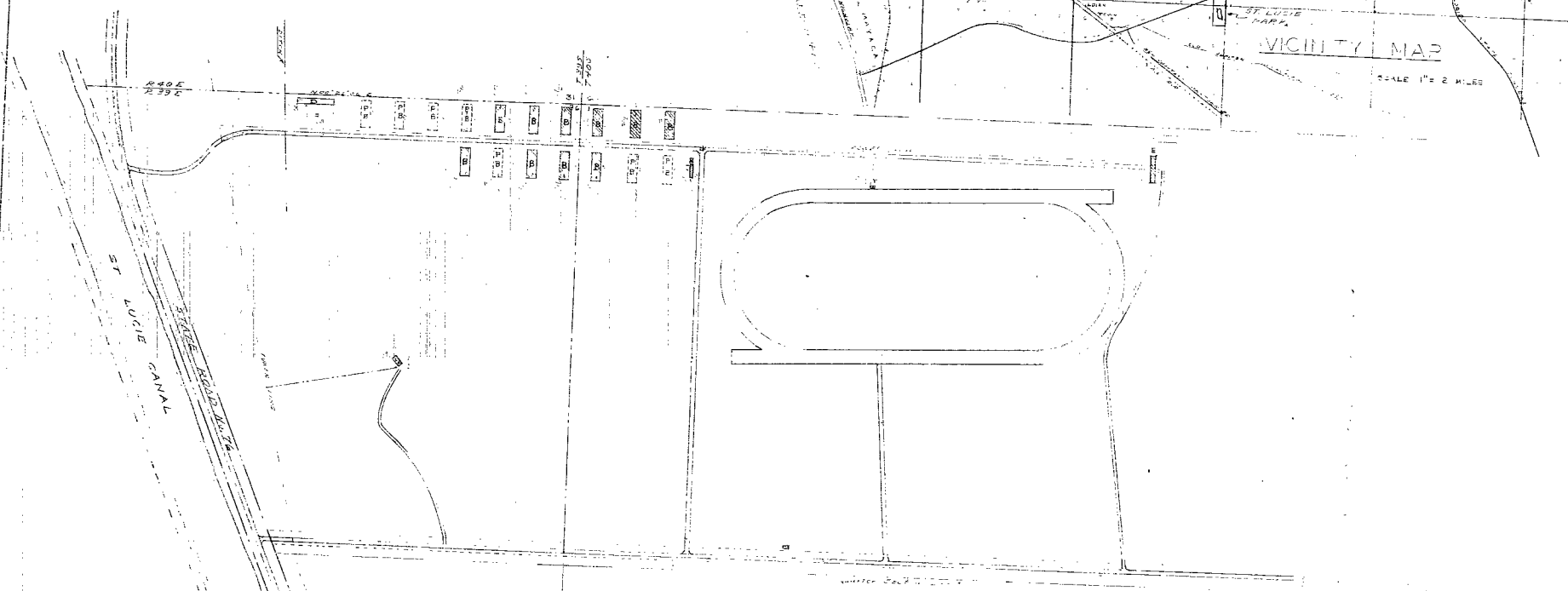
MARTIN COUNTY, FLORIDA

SCALE 1" = 300'

LAKE SOUTH

VICINITY MAP

SCALE 1" = 2 MILES



- LEGEND:
- P - Proposed
 - S - Barn
 - R - Restaurant
 - E - Equipment Shed
 - T - Transportation
 - D - Boundary

22:1

CONDITION OF DOCUMENT
UNSATISFACTORY FOR MICROFILMING

ST. LUCIE PARK, INC.
MARTIN COUNTY, FLORIDA
Engineered and designed by
Ben Herr, C.E.
FLORIDA LICENSE NO. 870