

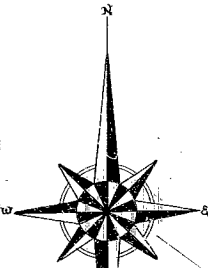
SECTION ONE OF



# SUNSET GROVES

A DIVISION OF LAND IN THAT PART OF THE SOUTH HALF OF SECTION 17  
TWP 39 SOUTH RGE 38 EAST LYING SOUTH AND EAST OF THE SEABOARD  
AIRLINE RAILROAD.

MARTIN COUNTY, FLORIDA.

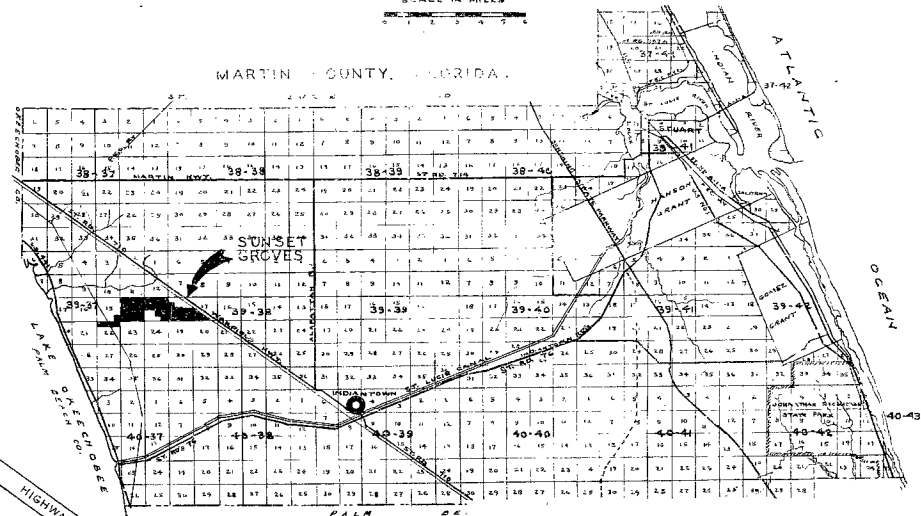
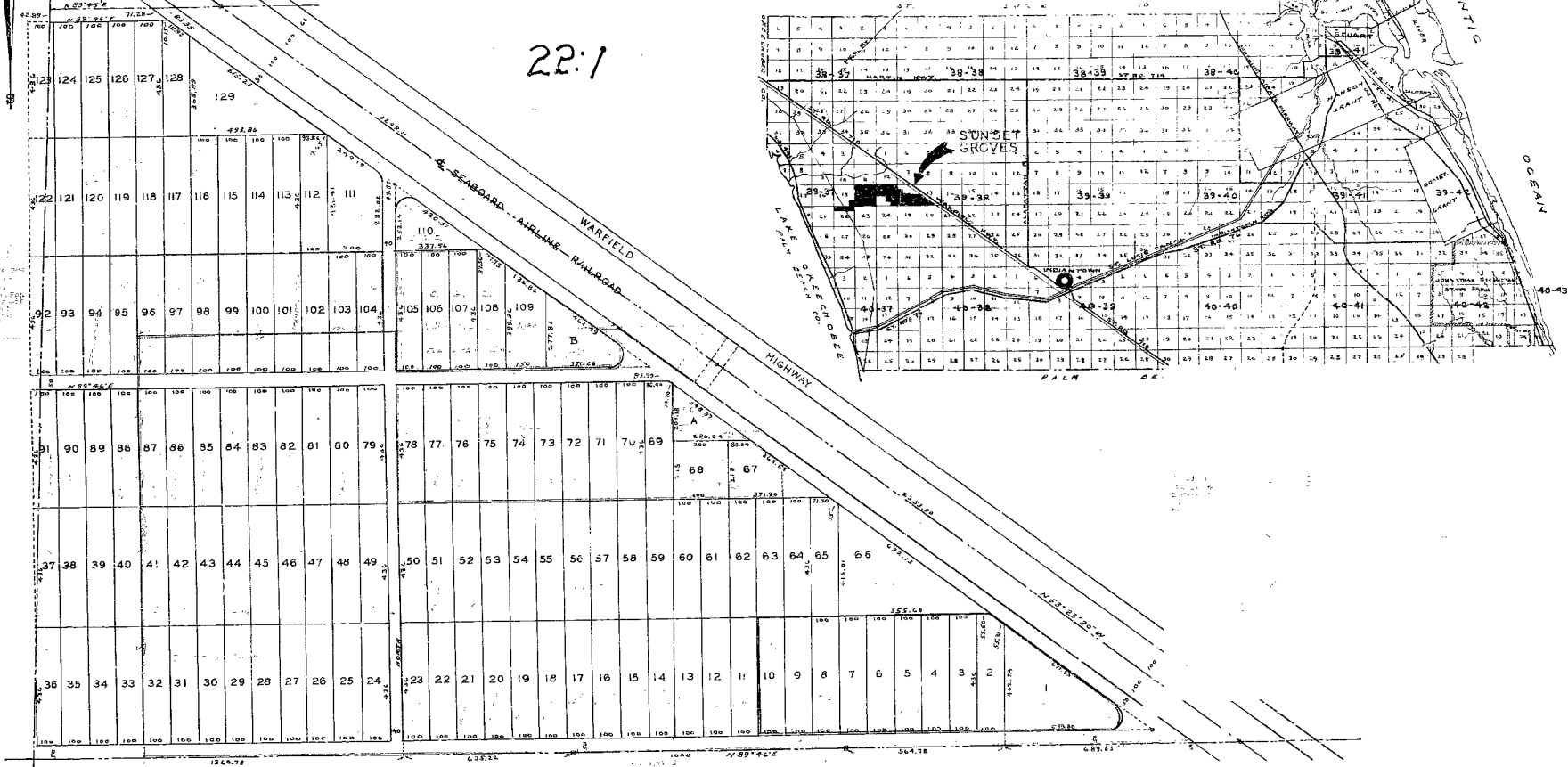


CONDITION OF RECORD  
UNRECORDED FOR MICROFILMED

22:1

SCALE IN MILES

MARTIN COUNTY, FLORIDA



*7/27/1902 with 2  
add. lot 1-1902*