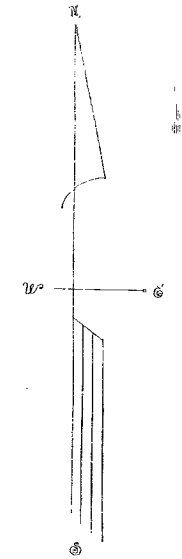
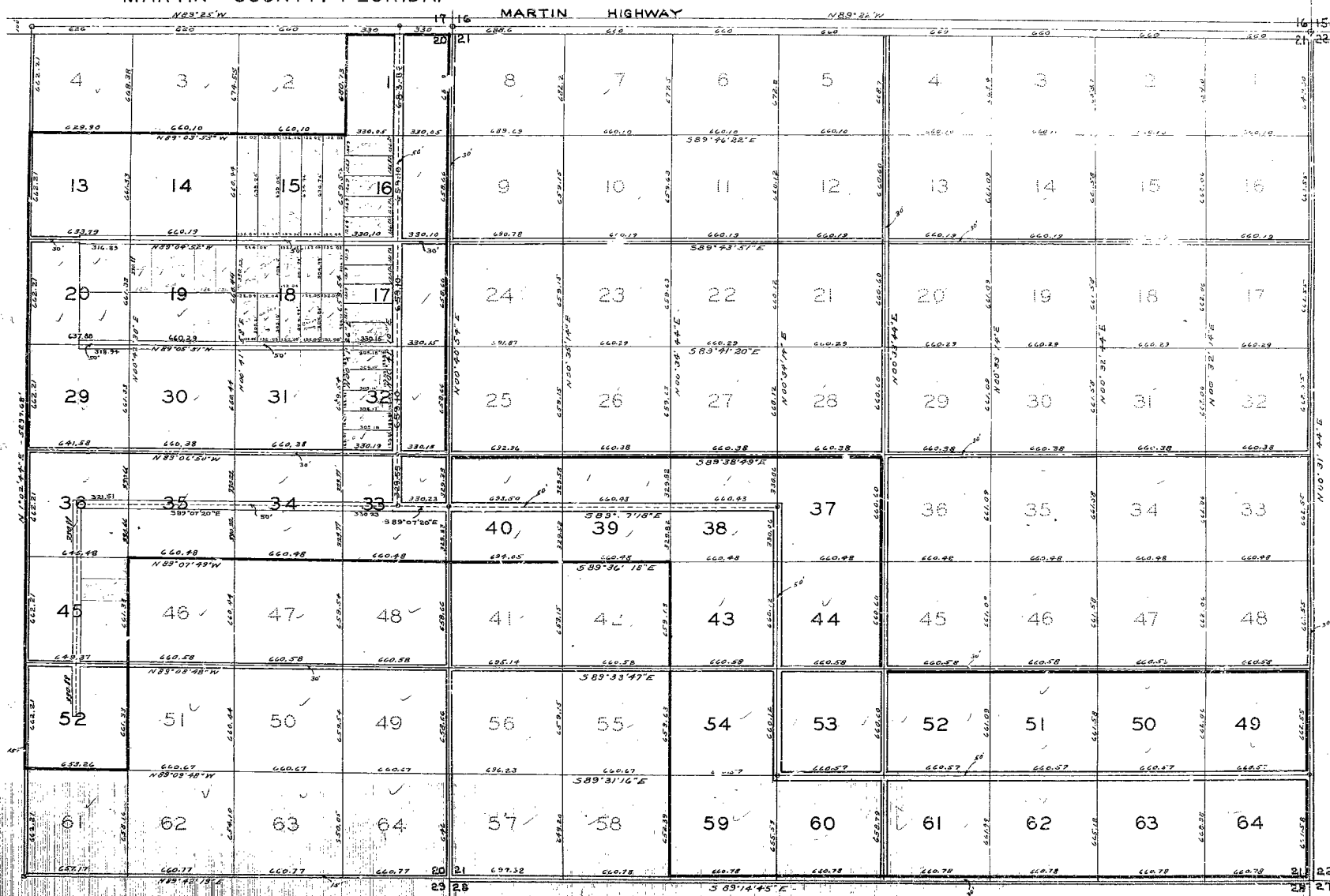


PALMA VISTA

Being Lots 1, 13, 14, 15, 16, 17, 18, 19, 20, 29, 30, 31, 32, 33, 34, 35, 36, 45, and 52, Section 20, and Lots 37, 38, 39, 40, 43, 44, 49, 50, 51, 52, 53, 54, 59, 60, 61, 62, 63, and 64, all in Twp 38 South, Rge 40 East, as recorded in Plat Book 6, Page 42, Public Records of Palm Beach County, as "Palm City Farms", MARTIN COUNTY, FLORIDA.

SCALE 1" = 300'

STAFFORD & BROCK
 Engineering - Land Surveying
 STUART, FLORIDA
 Oct. 15 14, 1958



NOTE:
 All measurements are 1/4 in center-line of the Roads, except along the west line of the East half and along the South line of East half of 5ac. 70, where measures are to the section line.

CONDITION OF DOCUMENT
 UNSUITABLE FOR MICROFILMING

22:1