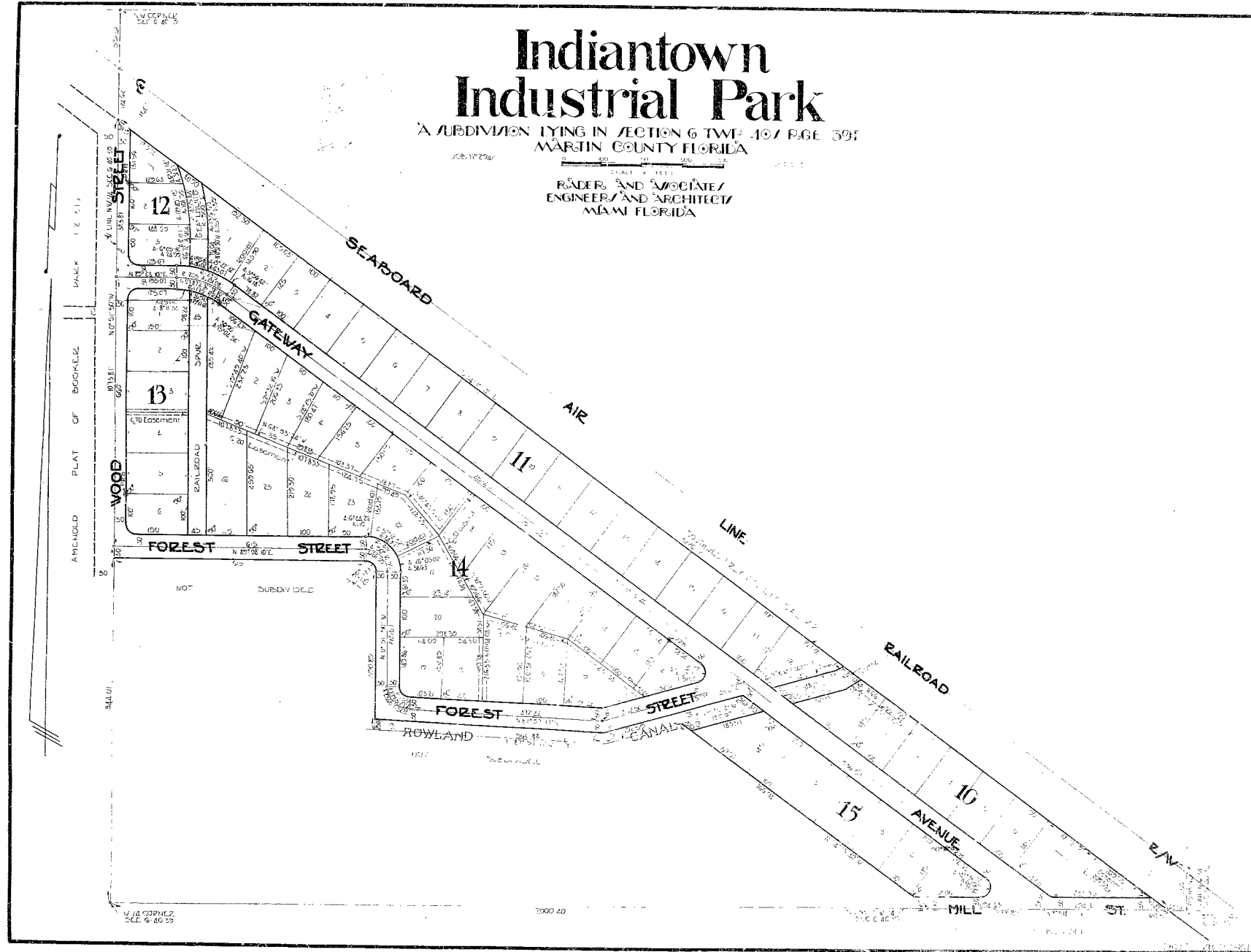


Indiantown Industrial Park

A SUBDIVISION LYING IN SECTION 6 TWP. 107 R.6E S9E
MARTIN COUNTY FLORIDA

SCALE 1" = 100'
RADER AND ASSOCIATES
ENGINEERS AND ARCHITECTS
MIAMI FLORIDA



241

CALC. H.P. & L.V.
DRAWN H.H.
C.R.D. L.L.C.