

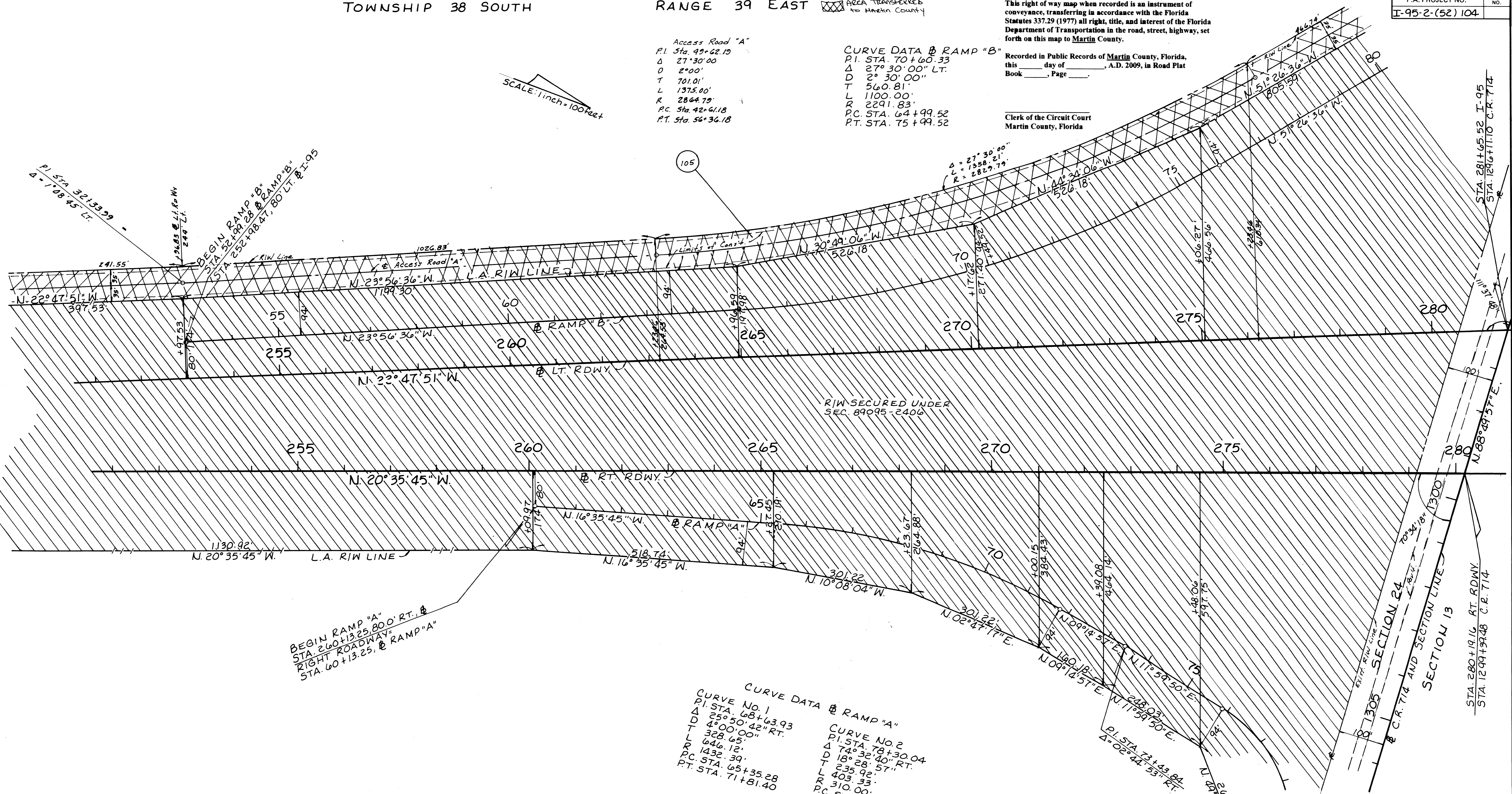
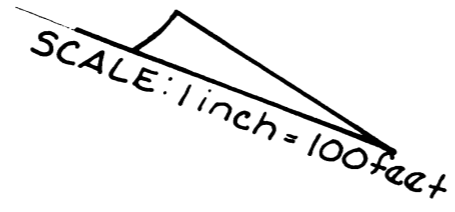
This right of way map when recorded is an instrument of conveyance, transferring in accordance with the Florida Statutes 337.29 (1977) all right, title, and interest of the Florida Department of Transportation in the road, street, highway, set forth on this map to Martin County.

Recorded in Public Records of Martin County, Florida, this _____ day of _____, A.D. 2009, in Road Plat Book _____, Page _____.

Clerk of the Circuit Court Martin County, Florida

Access Road "A"
P.I. Sta. 49+62.19
Δ 27°30'00"
D 2°00'
T 701.01'
L 1375.00'
R 2864.79'
P.C. Sta. 42+61.18
P.T. Sta. 56+36.18

CURVE DATA B RAMP "B"
P.I. STA. 70+60.33
Δ 27°30'00" LT.
D 2°30'00"
T 560.81'
L 1100.00'
R 2291.83'
P.C. STA. 64+99.52
P.T. STA. 75+99.52



BEGIN RAMP "A"
STA. 260+13.25 RT. @
RIGHT ROADWAY=
STA. 60+13.25 @ RAMP "A"

CURVE DATA @ RAMP "A"
CURVE NO. 1
P.I. STA. 68+63.93
Δ 25°50'42" RT.
D 4°00'00"
T 328.65'
L 646.12'
R 1432.39'
P.C. STA. 65+35.28
P.T. STA. 71+81.40

CURVE NO. 2
P.I. STA. 78+30.04
Δ 74°32'40" RT.
D 18°28'57"
T 235.92'
L 403.33'
R 310.00'
P.C. STA. 75+94.12
P.T. STA. 79+97.45

FLORIDA DEPARTMENT OF TRANSPORTATION
RIGHT OF WAY ENGINEERING SECTION
RIGHT OF WAY MAP
STATE ROAD NO. (I-95)9 MARTIN COUNTY
DRAWN BY R.B.S. 10-6-80 APPROVED BY E.C. Lord
TRACED BY J.C.B. 7-10-81
CHECKED BY J.C.B. 7-10-81
MAPS PREPARED BY 2nd DISTRICT OFFICE
W.P.I. NO. 446415
SCALE 1 inch = 100 feet
SECTION 89095-2414 SHEET 14