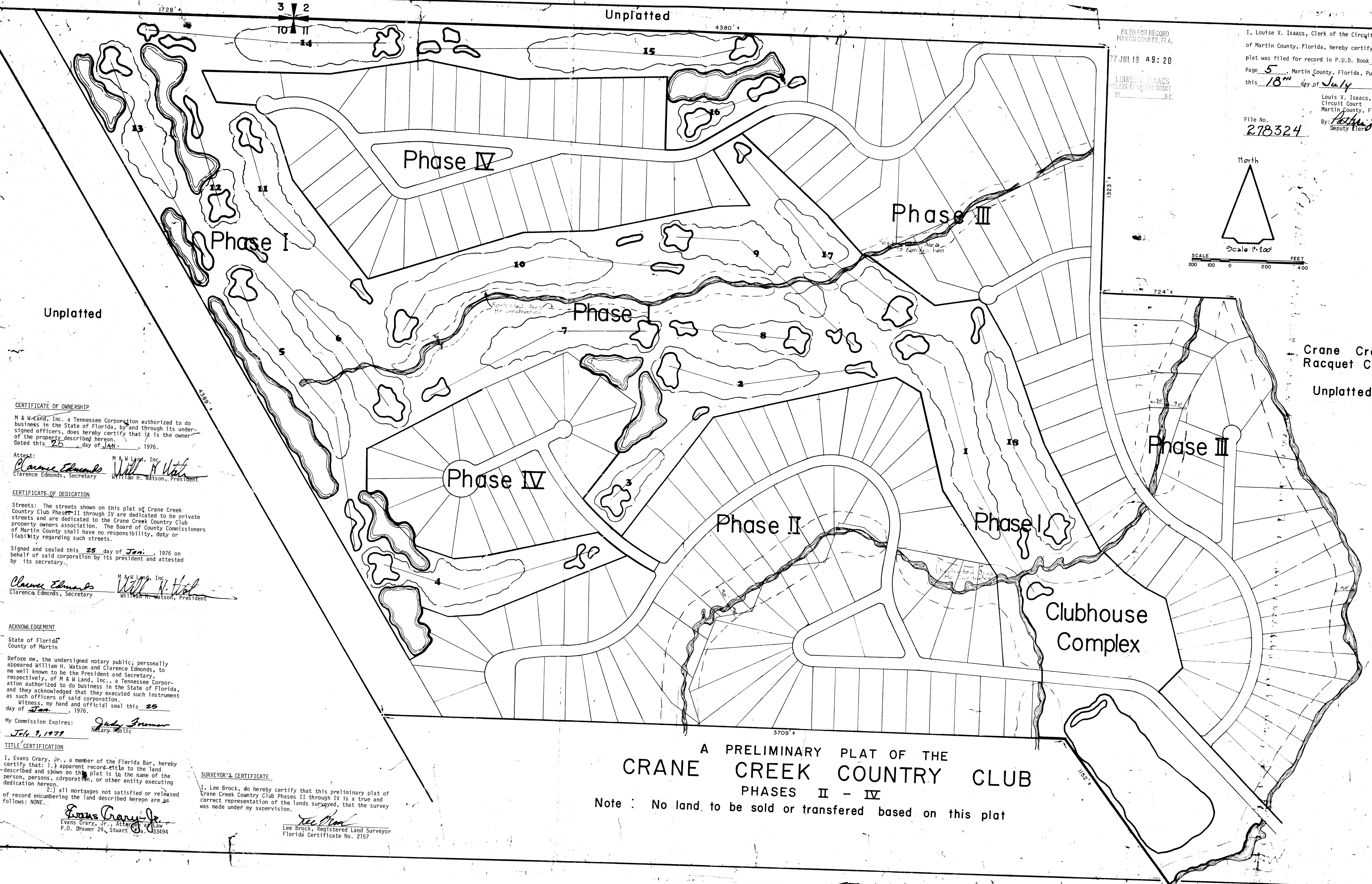


DESCRIPTION:

All that part of Section 10, Twp. 38 South, Rge. 40 East, lying East of Florida's Turnpike.
That part of Section 11, described as follows:
Begin at the Northwest corner of Section 11, Twp. 38 South, Rge. 40 East; thence run S 89°32'57" E along the North line of said Section 11 a distance of 4379.43 feet; thence run S 0°14'49" E a distance of 1322.86 feet; thence run S 89°39'46" E a distance of 989.99 feet; thence run S 0°14'49" E along the East line of said Section 11 a distance of 3306.40 feet; thence run N 89°46'26" W a distance of 416.18 feet; thence run W 31°32'33" W a distance of 1152.40 feet; thence run N 89°46'26" W a distance of 3709.29 feet; thence run N 31°32'33" W along the Easterly right of way of Florida's Turnpike a distance of 1052.82 feet to the intersection with the West line of said Section 11; thence run N 0°13'21" W along said West line a distance of 2841.71 feet to the Point of Beginning.

LESS: The Westerly 300 feet as measured perpendicular to the tangent portion of the right of way of Florida's Turnpike.
AND LESS: Start at the Point of Intersection of the North line of Sec. 10, Twp. 38 South, Rge. 40 East and the East right of way line of Florida's Turnpike; thence run S 89°46'26" E, along said North line of Section 10 a distance of 341.51 feet; for the Point of Beginning; thence continue to run S 89°26'26" E, along said North line of Section 10, a distance of 3386.41 feet, to the Northeast corner of Section 11; thence run S 89°33'36" E, along the North line of Section 11, a distance of 1772.25 feet; thence run South a distance of 330.40 feet to the Northeast corner of Section 10; thence run along said right of way by curvy right, the back tangent of which bears N 33°29'12" E, having a radius of 670.00 feet, a distance along the arc of 301.06 feet; through a central angle of 23°44'45"; thence continuing along proposed right of way run S 57°44'27" W a distance of 327.24 feet; thence by curve to the right, having a radius of 330.00 feet, run a distance along the arc of 201.13 feet, through a central angle of 36°00'46"; thence continuing along proposed right of way run N 86°14'47" W a distance of 9.47 feet; thence run North a distance of 538.23 feet; thence run S 89°49'51" W a distance of 805.60 feet; thence run N 79°49'49" W a distance of 492.74 feet; thence run S 80°37'33" W a distance of 534.13 feet; thence run West a distance of 677.00 feet; thence run S 25°26'10" E a distance of 181.60 feet; thence run S 68°35'02" E a distance of 217.99 feet; thence by curve, the back tangent of which bears N 10°46'27" W, having a radius of 50.00 feet, run a distance along the arc of 59.13 feet, through a central angle of 67°38'39"; thence run S 44°35'37" E a distance of 105.55 feet; thence run S 64°55'54" E a distance of 296.00 feet; thence run S 39°11'54" E a distance of 656.24 feet; thence run N 86°54'55" E a distance of 167.24 feet; thence run N 86°49'13" E a distance of 378.50 feet; thence run N 77°37'31" E a distance of 656.24 feet; thence run N 86°54'55" E a distance of 167.24 feet; thence run N 34°57'54" W a distance of 349.31 feet; to the South right of way of proposed road; thence run S 57°44'27" E a distance of 378.50 feet; thence run S 42°34'15" E a distance of 233.56 feet; thence run S 57°18'02" E a distance of 96.25 feet; thence run S 52°22'49" E a distance of 412.74 feet; thence run N 80°43'39" E a distance of 248.24 feet to the right of way of proposed road; thence by curve, the back tangent of which bears N 27°12'31" W, having a radius of 50.00 feet, run a distance along the arc of 46.13 feet, through a central angle of 45°59'55"; thence run S 20°49'10" E a distance of 543.43 feet; thence run S 29°20'15" E a distance of 647.00 feet; thence run S 50°25'22" E a distance of 194.60 feet; thence run S 56°32'48" E a distance of 134.24 feet; thence run S 62°52'14" E a distance of 114.40 feet; thence run S 14°56'43" E a distance of 385.85 feet; thence run of which bears S 56°46'36" E, having a radius of 390.00 feet, a distance along the arc of 200.68 feet, through a central angle of 29°25'52"; thence continuing along said proposed right of way run N 86°23'23" W a distance of 454.04 feet; thence run N 16°07'50" W a distance of 473.01 feet; thence run N 67°00'03" W a distance of 154.78 feet; thence run N 35°10'14" W a distance of 526.03 feet; thence run N 14°42'58" W a distance of 531.43 feet; thence run N 57°07'55" W a distance of 1009.20 feet; thence run S 35°52'18" W a distance of 757.71 feet; thence run S 20°37'36" W a distance of 49.32 feet to the right of way of proposed road; thence run along said right of way of proposed road by curve, the back tangent of which bears S 53°35'52" E, having a radius of 1470.00 feet, a distance of 301.21 feet, through a central angle of 11°44'24"; thence run N 36°11'10" E a distance of 323.27 feet; thence run N 57°45'03" E a distance of 302.32 feet; thence run N 23°52'45" W a distance of 364.41 feet; thence run N 86°14'52" W a distance of 407.54 feet; thence run S 68°35'02" E a distance of 504.20 feet; thence run N 61°16'36" W a distance of 688.75 feet; thence run S 21°10'03" E a distance of 224.18 feet; thence run 43°53'19" E a distance of 401.00 feet; thence run S 73°02'18" E a distance of 209.99 feet; thence run N 83°24'12" E a distance of 147.98 feet; thence run 364.41 feet; thence run N 86°14'52" W a distance of 407.54 feet; thence run N 31°32'33" W a distance of 4025.19 feet to the Point of Beginning, containing 174.295 acres.



CERTIFICATE OF OWNERSHIP
M & W Land, Inc. a Tennessee Corporation authorized to do business in the State of Florida, by and through its undersigned officers, does hereby certify that it is the owner of the property described hereon.
Dated this 25 day of JAN., 1976.
Attest:
Clarence Edmonds, Secretary
William H. Watson, President

CERTIFICATE OF DEDICATION
Streets: The streets shown on this plat of Crane Creek Country Club Phases II through IV are dedicated to be private streets and are dedicated to the Crane Creek Country Club property owners association. The Board of County Commissioners of Martin County shall have no responsibility, duty or liability regarding such streets.
Signed and sealed this 25 day of Jan., 1976 on behalf of said corporation by its president and attested by its secretary.
Clarence Edmonds, Secretary
William H. Watson, President

ACKNOWLEDGEMENT
State of Florida
County of Martin
Before me, the undersigned notary public, personally appeared William H. Watson and Clarence Edmonds, to me well known to be the President and Secretary, respectively, of M & W Land, Inc., a Tennessee Corporation authorized to do business in the State of Florida, and they acknowledged that they executed such instrument as such officers of said corporation.
Witness, my hand and official seal this 25 day of Jan., 1976.
My Commission Expires: July 9, 1977
Notary Public

TITLE CERTIFICATION
I, Evans Crary, Jr., a member of the Florida Bar, hereby certify that: 1.) all mortgages not satisfied or released of record encumbering the land described hereon are as follows: NONE.
Evans Crary, Jr., Attorney at Law
P.O. Drawer 24, Stuart, Florida 34934

SURVEYOR'S CERTIFICATE
I, Lee Brock, do hereby certify that this preliminary plat of Crane Creek Country Club Phases II through IV is a true and correct representation of the lands surveyed, that the survey was made under my supervision.
Lee Brock, Registered Land Surveyor
Florida Certificate No. 2157

A PRELIMINARY PLAT OF THE
CRANE CREEK COUNTRY CLUB
PHASES II - IV
Note: No land to be sold or transferred based on this plat

FILED FOR RECORD
MARTIN COUNTY, FLA.
7 JUL 18 9 8: 20
LOUISE V. ISAACS
CLERK OF CIRCUIT COURT
File No. 278324
I, Louise V. Isaacs, Clerk of the Circuit Court of Martin County, Florida, hereby certify that this plat was filed for record in P.U.D. Book 1, Page 5, Martin County, Florida, Public Records, this 18th day of July, 1977.
Louis V. Isaacs, Clerk of Circuit Court, Martin County, Florida
Deputy Clerk

35 East Ocean Blvd. P.O. Box 259
Stuart, Florida (305)-287-0525
Lee Brock, P.E., B.L.S.
ENGINEERING CONSULTANTS SURVEYING DESIGNERS
CRANE CREEK COUNTRY CLUB

13