

NEW HOPE COMMUNITY

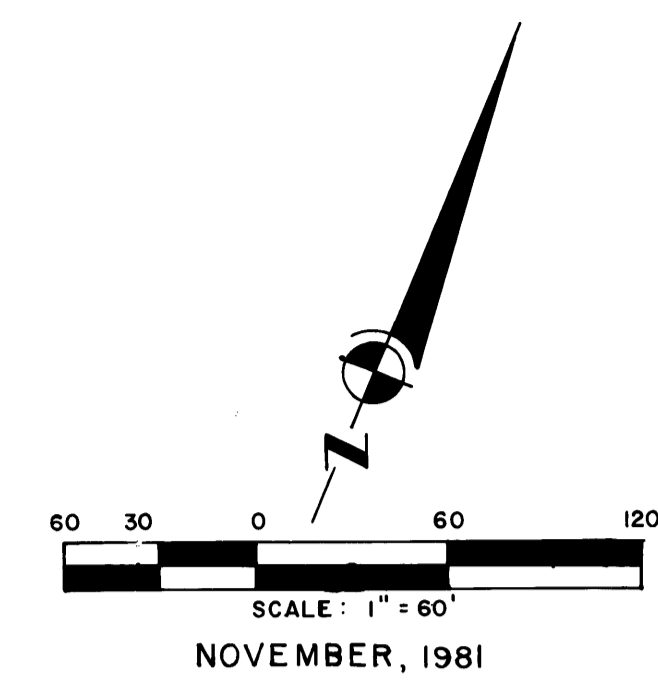
Lying in Section One (1) Township 40 South,
Range 38 East, Martin County, Florida

CLERK'S RECORDING CERTIFICATE

I, Louise V. Isaacs, Clerk of the Circuit Court of Martin County, Florida hereby certify that this Plat was filed for Record in Plat Book 9, Page 19, Martin County, Florida Public Records this 30th Day of January, 1982.

Louise V. Isaacs, Clerk
Circuit Court
Martin County, Florida

File No. _____ By: _____
Deputy Clerk



CURVE DATA

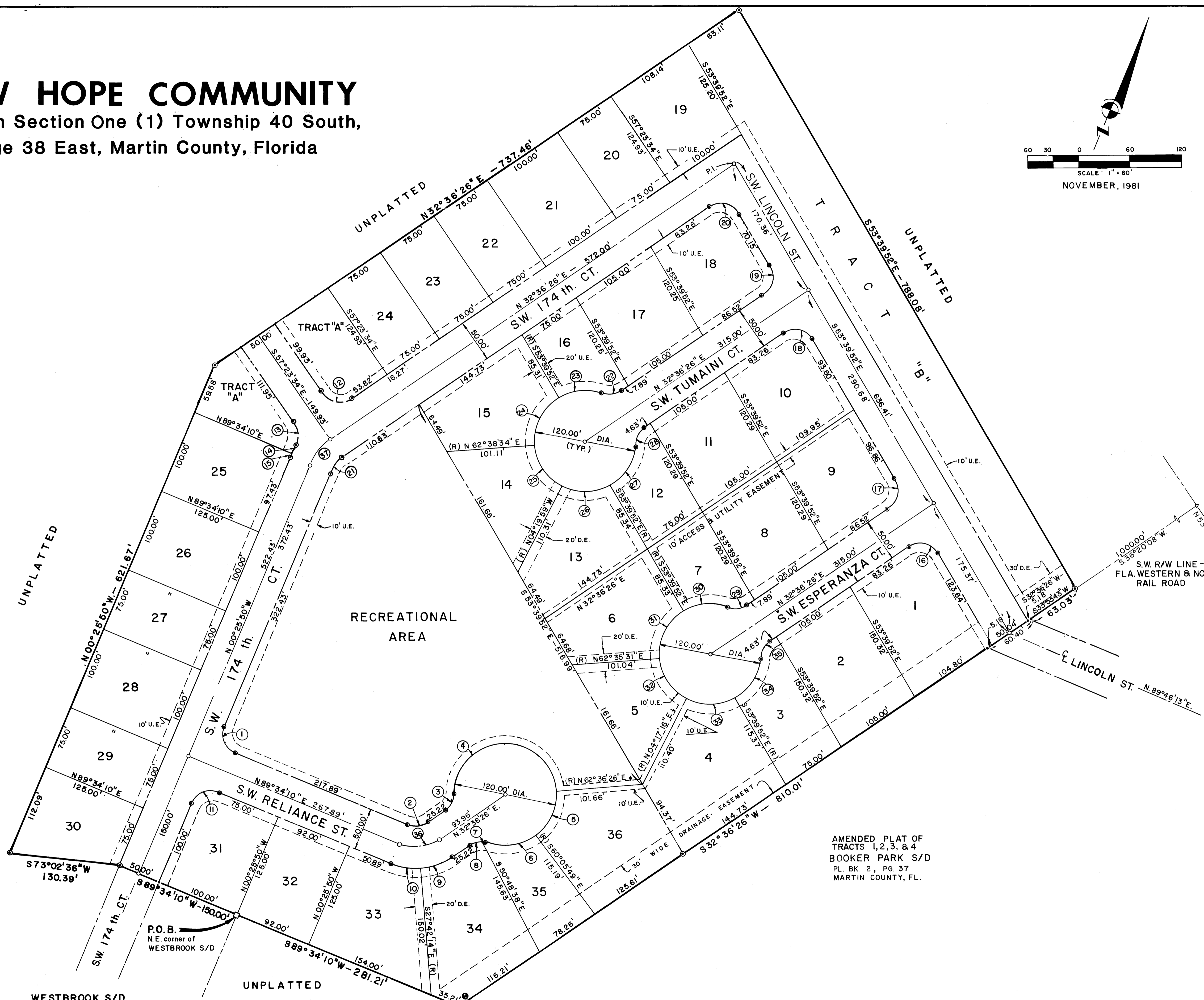
| CURVE NUMBER | RADIUS | DELTA ANGLE | ARCH LENGTH | TANGENT | CHORD LENGTH | CHORD BEARING |
|--------------|--------|-------------|-------------|----------|--------------|---------------|
| C-1 | 25.00' | 90°00'00" | 39.27' | 25.00' | 35.36' | S 45°25'50" E |
| C-2 | 25.00' | 56°57'44" | 24.85' | 13.56' | 23.84' | N 61°05'18" E |
| C-3 | 25.00' | 53°58'05" | 23.55' | 12.73' | 22.69' | N 05°37'23" E |
| C-4 | 60.00' | 173°58'05" | 182.18' | 1138.79' | 119.83' | N 65°37'23" E |
| C-5 | 60.00' | 57°17'55" | 60.00' | 32.78' | 57.53' | S 01°15'24" W |
| C-6 | 60.00' | 56°40'10" | 59.34' | 32.35' | 56.95' | S 58°14'26" W |
| C-7 | 25.00' | 15°51'37" | 6.22' | 3.48' | 6.30' | S 78°38'43" W |
| C-8 | 25.00' | 38°06'27" | 16.33' | 8.63' | 16.32' | S 51°39'40" W |
| C-9 | 75.00' | 29°41'20" | 38.16' | 19.88' | 38.43' | S 47°27'06" W |
| C-10 | 75.00' | 27°16'24" | 35.70' | 18.20' | 35.36' | S 75°55'58" W |
| C-11 | 25.00' | 90°00'00" | 39.27' | 25.00' | 35.36' | S 44°34'10" W |
| C-12 | 25.00' | 90°00'00" | 39.27' | 25.00' | 35.36' | N 77°36'15" E |
| C-13 | 25.00' | 62°57'51" | 27.47' | 15.31' | 26.11' | N 25°44'39" W |
| C-14 | 35.00' | 04°16'02" | 6.33' | 3.17' | 6.33' | N 03°26'17" E |
| C-15 | 35.00' | 01°44'05" | 2.37' | 1.29' | 2.57' | N 00°26'13" E |
| C-16 | 25.00' | 93°43'42" | 40.30' | 26.68' | 36.49' | S 79°28'17" W |
| C-17 | 25.00' | 86°16'18" | 37.54' | 23.42' | 34.19' | N 10°31'43" W |
| C-18 | 25.00' | 93°43'42" | 40.30' | 26.68' | 36.49' | S 79°28'17" W |
| C-19 | 25.00' | 86°16'18" | 37.54' | 23.42' | 34.19' | N 10°31'43" W |
| C-20 | 25.00' | 93°43'42" | 40.30' | 26.68' | 36.49' | S 79°28'17" W |
| C-21 | 35.00' | 33°02'16" | 20.18' | 10.38' | 19.90' | N 16°05'18" E |
| C-22 | 25.00' | 53°58'05" | 23.55' | 12.73' | 22.69' | S 59°35'33" W |
| C-23 | 60.00' | 50°14'23" | 52.51' | 28.13' | 50.94' | S 61°27'17" W |
| C-24 | 60.00' | 63°41'34" | 65.10' | 37.27' | 63.22' | S 04°29'23" W |
| C-25 | 60.00' | 58°18'35" | 61.06' | 33.47' | 58.46' | S 56°30'44" E |
| C-26 | 60.00' | 57°59'51" | 60.73' | 33.26' | 58.17' | N 65°20'04" E |
| C-27 | 60.00' | 57°41'47" | 60.42' | 33.05' | 57.90' | N 07°29'17" E |
| C-28 | 25.00' | 53°58'05" | 23.55' | 12.73' | 22.69' | N 05°37'17" E |
| C-29 | 25.00' | 53°58'05" | 23.55' | 12.73' | 22.69' | S 59°35'39" W |
| C-30 | 60.00' | 50°14'23" | 52.51' | 28.13' | 50.94' | S 61°27'15" W |
| C-31 | 60.00' | 63°44'37" | 66.75' | 37.31' | 63.36' | S 04°27'50" W |
| C-32 | 60.00' | 58°18'15" | 61.06' | 33.47' | 58.46' | S 56°33'37" E |
| C-33 | 60.00' | 57°57'05" | 60.49' | 33.23' | 58.13' | N 65°18'42" W |
| C-34 | 60.00' | 57°41'47" | 60.42' | 33.05' | 57.90' | N 07°29'16" E |
| C-35 | 25.00' | 53°58'05" | 23.55' | 12.73' | 22.69' | N 05°37'20" E |
| C-36 | 50.00' | 56°57'44" | 24.85' | 13.56' | 23.84' | N 61°05'18" E |
| C-37 | 60.00' | 33°02'16" | 34.60' | 17.79' | 34.12' | N 16°05'18" E |

LEGEND

- Denotes Permanent Reference Monument
- Denotes Permanent Control Points
- U.E. Denotes Utility Easements
- D.E. Denotes Drainage Easements
- (R) Denotes Lines that are Radial
- ⊙ Denotes Benchmark

NOTES

1. Bearings shown hereon are assumed and referenced to the north line of WESTBROOK S/D as recorded in plat book 5, page 98, public records of Martin County, Florida.
2. Access to all housing units shall be from internal road systems.
3. There shall be no lot splits, except to create larger lots.
4. Easements are as shown.
5. Benchmark shown hereon is a Railroad Spike, located in an 18" Pine Tree on a Magnetic Bearing of N 26° E, approximately 2.2' from S.E. Property Corner and 2' above Natural Ground Surface, and being in North Face of said Tree.
NGVD Elevation: 35.45'



AMENDED PLAT OF
TRACTS 1, 2, 3, & 4
BOOKER PARK S/D
PL. BK. 2, PG. 37
MARTIN COUNTY, FL.

WESTBROOK S/D
PL. BK. 5, PG. 98
MARTIN COUNTY, FL.