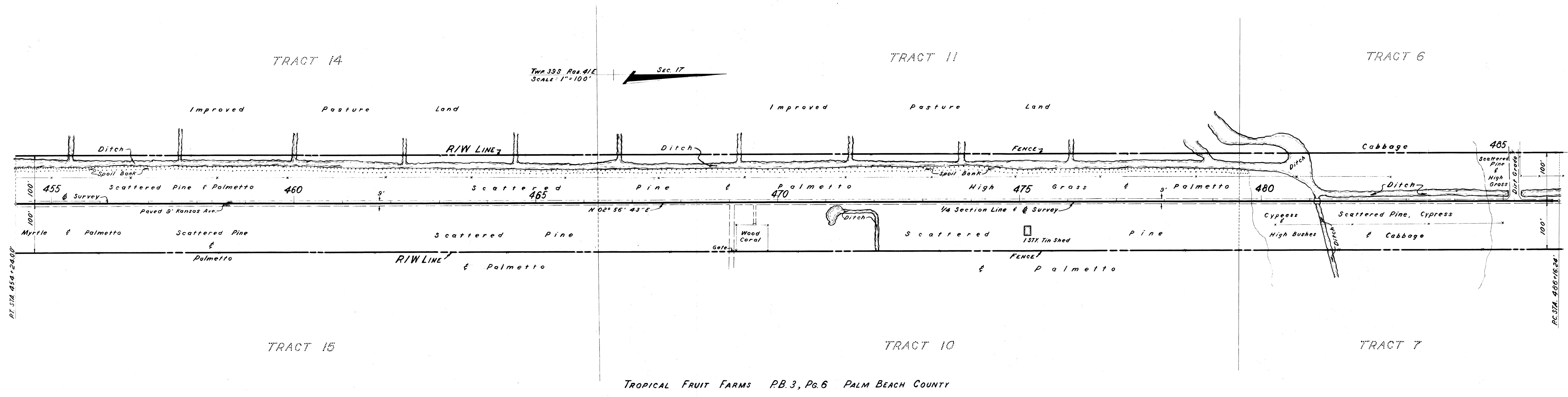


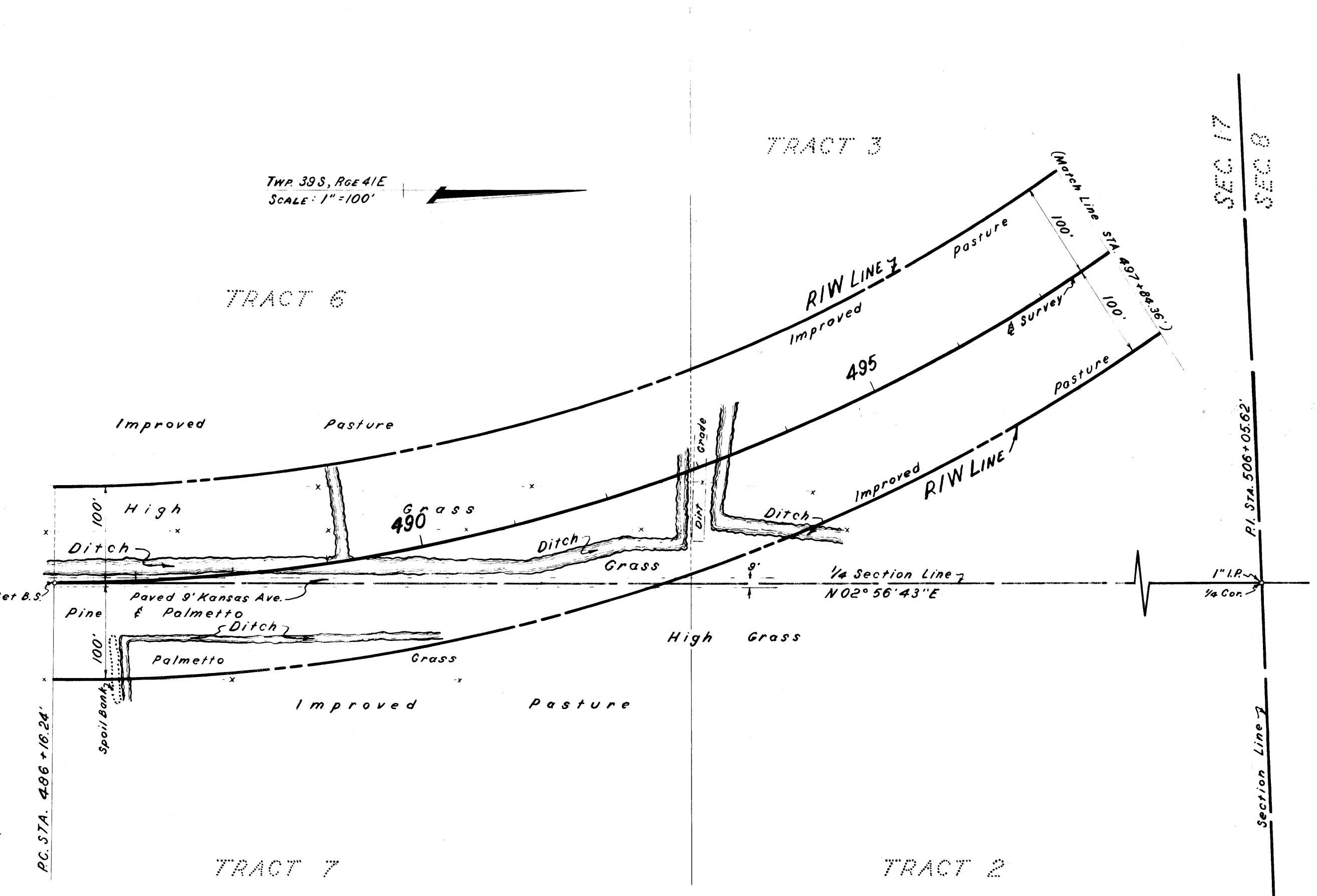
FED. ROAD DIV. No.	STATE	PROJECT No.	FISCAL YEAR	SHEET No.
3	FLA.	88501-2602	'68'	3

TROPICAL FRUIT FARMS PB.3, Pg.6 PALM BEACH COUNTY



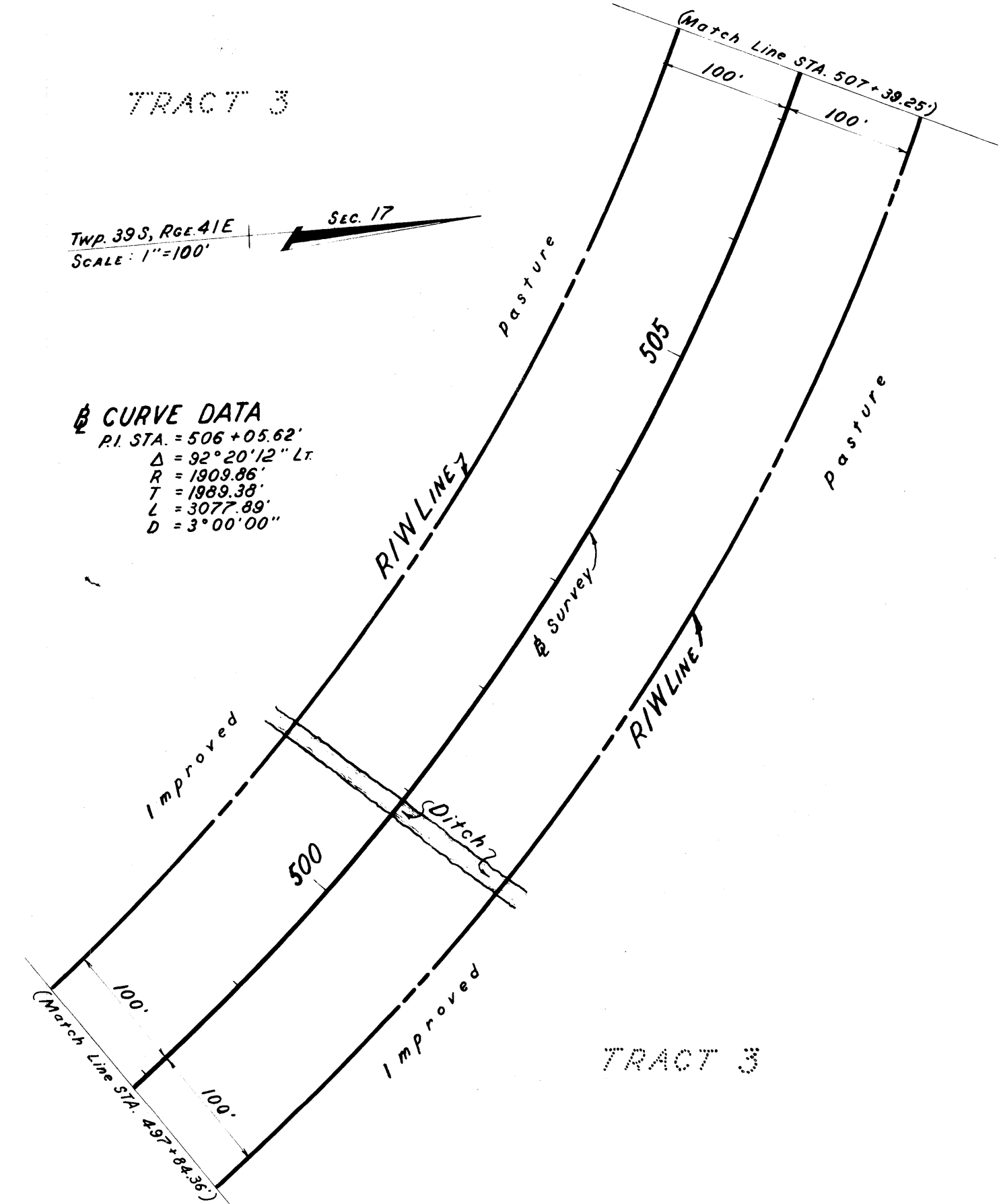
TROPICAL FRUIT FARMS PB.3, Pg.6 PALM BEACH COUNTY

TROPICAL FRUIT FARMS PB.3, Pg.6 PALM BEACH COUNTY



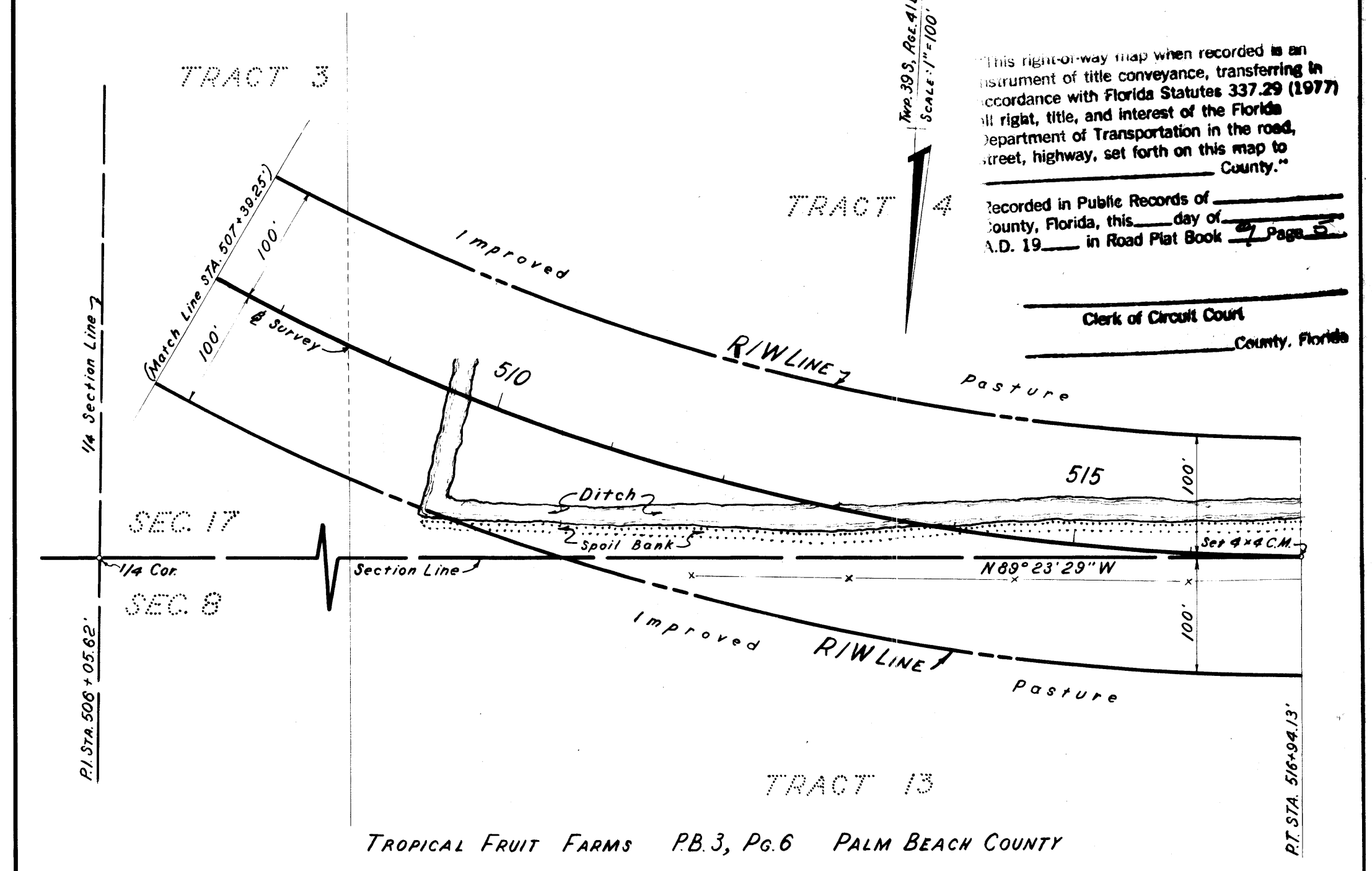
TROPICAL FRUIT FARMS PB.3, Pg.6 PALM BEACH COUNTY

TROPICAL FRUIT FARMS PB.3, Pg.6 PALM BEACH COUNTY



TROPICAL FRUIT FARMS PB.3, Pg.6 PALM BEACH COUNTY

TROPICAL FRUIT FARMS PB.3, Pg.6 PALM BEACH COUNTY



This right-of-way map when recorded is an instrument of title conveyance, transferring in accordance with Florida Statutes 337.29 (1977) all right, title, and interest of the Florida Department of Transportation in the road, street, highway, set forth on this map to County.

Recorded in Public Records of County, Florida, this day of \_\_\_\_\_ A.D. 19\_\_ in Road Plat Book # Page #

Clerk of Circuit Court  
County, Florida

**PRATT WHITNEY ROAD**  
STATE OF FLORIDA  
STATE ROAD DEPARTMENT

## RIGHT OF WAY MAP

STATE ROAD NO. **S-711** MARTIN COUNTY

By	DATE	APPROVED BY	DATE
G. Foss	9-66	J. Francis C. Henderson	12-5-66
Traced	R. Wolo	10-66	DISTRICT ENGINEER
Checked	G. Foss	10-66	ENGINEER OF RIGHTS OF WAY
COMPARED			STATE HIGHWAY ENGINEER
INDEXED			

SECTION. 88501-2602 SHEET 3 OF 4