

RIDGEWAY MOBILE HOME SUBDIVISION PLAT EIGHT

MARTIN COUNTY, FLORIDA

BEGIN AT THE UNNUMBERED P.R.M. AT THE SOUTHWEST CORNER OF LOT 27, BLOCK D, RIDGEWAY MOBILE HOME SUBDIVISION, PLAT NO. 1, PLAT BOOK 4, PAGE 41 PUBLIC RECORDS OF MARTIN COUNTY, FLORIDA; THENCE RUN N 21°07'22"W, ALONG THE WEST LINE OF SAID SUBDIVISION, A DISTANCE OF 742.12 FEET TO THE NORTHWEST CORNER OF LOT 14, BLOCK D, OF SAID SUBDIVISION, THENCE RUN S 68°52'38"W, ALONG THE SOUTH LINE OF SAID SUBDIVISION, A DISTANCE OF 1112.26 FEET; THENCE RUN S 42°13'52"E A DISTANCE OF 795.50 FEET TO THE NORTHERLY RIGHT OF WAY LINE OF 8TH STREET, ACCORDING TO THE PLAT OF GOMEZ GRANT AND JUPITER ISLAND, PLAT BOOK 1, PAGE 80, PUBLIC RECORDS OF PALM BEACH COUNTY, NOW MARTIN COUNTY, FLORIDA; THENCE RUN N 68°52'38"E, ALONG SAID NORTHERLY RIGHT OF WAY LINE, A DISTANCE OF 825.78 FEET TO THE POINT OF BEGINNING; CONTAINING 16.508 ACRES.

CURVE DATA					
NO.	RADIUS	DELTA	LENGTH	TANGENT	CHORD
C-1	25.00'	90°00'00"	39.27'	25.00'	35.36'
C-2	25.00'	90°00'00"	39.27'	25.00'	35.36'
C-3	25.00'	90°00'00"	39.27'	25.00'	35.36'
C-4	25.00'	90°00'00"	39.27'	25.00'	35.36'
C-5	25.00'	90°00'00"	39.27'	25.00'	35.36'
C-6	25.00'	90°00'00"	39.27'	25.00'	35.36'
C-7	100.00'	19°10'57"	33.48'	16.90'	33.32'
C-8	100.00'	27°46'37"	48.48'	24.73'	48.01'
C-9	100.00'	27°46'37"	48.48'	24.73'	48.01'
C-10	100.00'	15°15'49"	26.64'	13.40'	26.56'
C-11	50.00'	90°00'00"	78.54'	50.00'	70.71'
C-12	25.00'	90°00'00"	39.27'	25.00'	35.36'
C-13	25.00'	90°00'00"	39.27'	25.00'	35.36'
C-14	25.00'	90°00'00"	39.27'	25.00'	35.36'
C-15	25.00'	90°00'00"	39.27'	25.00'	35.36'
C-16	25.00'	90°00'00"	39.27'	25.00'	35.36'
C-17	25.00'	90°00'00"	39.27'	25.00'	35.36'
C-18	50.00'	90°00'00"	78.54'	50.00'	70.71'
C-19	100.00'	15°15'49"	26.64'	13.40'	26.56'
C-20	100.00'	27°46'37"	48.48'	24.73'	48.02'
C-21	100.00'	27°46'37"	48.48'	24.73'	48.01'
C-22	100.00'	19°10'37"	33.47'	16.90'	33.31'
C-23	25.00'	90°00'00"	39.27'	25.00'	35.36'
C-24	25.00'	90°00'00"	39.27'	25.00'	35.36'
A	50.00'	90°00'00"	78.54'	50.00'	70.71'
B	75.00'	90°00'00"	117.81'	75.00'	106.07'
C	75.00'	90°00'00"	117.81'	75.00'	106.07'
D	50.00'	90°00'00"	78.54'	50.00'	70.71'

I, LOUISE V. ISAACS, CLERK OF THE CIRCUIT COURT OF MARTIN COUNTY, FLORIDA, HEREBY CERTIFY THAT THIS PLAT WAS FILED FOR RECORD IN PLAT BOOK 7, PAGE 54, MARTIN COUNTY, FLORIDA, PUBLIC RECORDS, THIS 27 DAY OF July 1978.

LOUISE V. ISAACS, CLERK
CIRCUIT COURT
MARTIN COUNTY, FLORIDA
By: *Kathryn J. De* 311999
FILE NO.

78 JUL 27 4 51 PM '78
LOUISE V. ISAACS
CLERK OF CIRCUIT COURT
MARTIN COUNTY, FLORIDA

NORTH

SCALE: 1"=100'
FEBRUARY 17, 1978

CERTIFICATE OF OWNERSHIP AND DEDICATION

STATE OF FLORIDA
COUNTY OF MARTIN

RIDGEWAY MOBILE HOME SUBDIVISION, INC., A FLORIDA CORPORATION, BY AND THROUGH ITS UNDERSIGNED OFFICERS DOES HEREBY CERTIFY THAT IT IS THE OWNER OF THE PROPERTY DESCRIBED HEREON AND DOES HEREBY DEDICATE AS FOLLOWS:

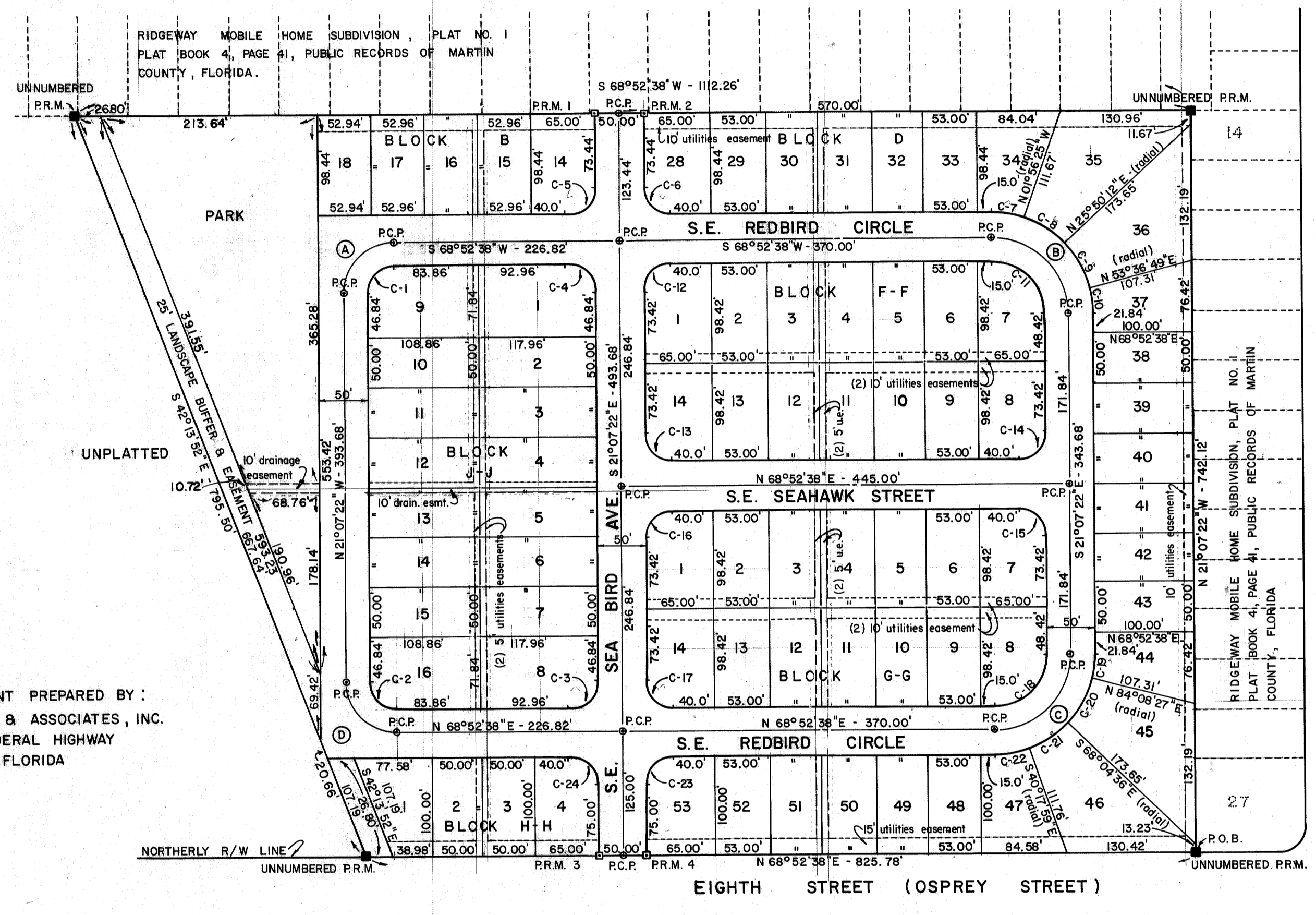
- THE STREETS AND RIGHTS OF WAY SHOWN ON THIS PLAT ARE HEREBY DEDICATED TO THE USE OF THE PUBLIC.
- THE UTILITY EASEMENTS SHOWN ON THIS PLAT MAY BE USED FOR UTILITY PURPOSES BY ANY UTILITY COMPANY IN COMPLIANCE WITH SUCH ORDINANCES AND REGULATIONS AS MAY BE ADOPTED FROM TIME TO TIME BY THE BOARD OF COUNTY COMMISSIONERS OF MARTIN COUNTY.

SIGNED AND SEALED THIS 19th DAY OF July, 1978 ON BEHALF OF SAID CORPORATION BY ITS PRESIDENT AND ATTESTED TO BY ITS SECRETARY.

RIDGEWAY MOBILE HOME SUBDIVISION, INC.
BY: *Harold L. Keathley*
HAROLD L. KEATHLEY, PRESIDENT

ATTEST:
Gerald W. Bobo
GERALD W. BOBO, SECRETARY

THIS INSTRUMENT PREPARED BY:
GERALD BOBO & ASSOCIATES, INC.
11120 S.E. FEDERAL HIGHWAY
HOBE SOUND, FLORIDA



ACKNOWLEDGEMENT

STATE OF FLORIDA
COUNTY OF MARTIN

BEFORE ME, THE UNDERSIGNED NOTARY PUBLIC, PERSONALLY APPEARED HAROLD L. KEATHLEY AND GERALD W. BOBO, TO ME WELL KNOWN TO BE THE PRESIDENT AND SECRETARY, RESPECTIVELY, OF RIDGEWAY MOBILE HOME SUBDIVISION, INC., A FLORIDA CORPORATION, AND THEY EXECUTED SUCH INSTRUMENT, CERTIFICATE OF OWNERSHIP AND DEDICATION AS SUCH OFFICERS OF SUCH CORPORATION.

WITNESS MY HAND AND SEAL THIS 19th DAY OF July 1978.

Lois B. Belding
NOTARY PUBLIC
STATE OF FLORIDA AT LARGE
MY COMMISSION EXPIRES 1/4/82

TITLE CERTIFICATION

STATE OF FLORIDA
COUNTY OF MARTIN

I, HERBERT W. BIGGS, A MEMBER OF THE FLORIDA BAR, HEREBY CERTIFY THAT:

- APPARENT RECORD TITLE TO THE LAND DESCRIBED AND SHOWN ON THIS PLAT IS IN THE NAME OF THE CORPORATION EXECUTING THE DEDICATION HEREON.
- THERE ARE NO MORTGAGES OF RECORD ENCUMBERING THE LAND DESCRIBED HEREON.

Herbert W. Biggs ATTORNEY AT LAW
ADDRESS: BRIDGE ROAD
HOBE SOUND, FLORIDA
DATED: JULY 19, 1978

SURVEYOR'S CERTIFICATE

STATE OF FLORIDA

I, LEE BROOK, DO HEREBY CERTIFY THAT THIS PLAT OF RIDGEWAY MOBILE HOME SUBDIVISION, PLAT EIGHT, IS A TRUE AND CORRECT REPRESENTATION OF THE LANDS SURVEYED, THAT THE SURVEY WAS MADE UNDER MY SUPERVISION, AND THAT THE SURVEY DATA COMPLIES WITH ALL OF THE REQUIREMENTS OF CHAPTER 177, FLORIDA STATUTES.

Lee Brook
REGISTERED LAND SURVEYOR
FLORIDA CERTIFICATE NO. 2157
DATED: JULY 19, 1978

COUNTY APPROVAL

STATE OF FLORIDA
COUNTY OF MARTIN

THIS PLAT IS HEREBY APPROVED BY THE UNDERSIGNED ON THE DATE OR DATES INDICATED.

DATED: 7/20/78
7/26/78
July 26, 1978
July 26, 1978
July 27, 1978

William G. ...
CHAIRMAN, BOARD OF COUNTY COMM.

...
CHAIRMAN, PLANNING & ZONING COMM.

...
COUNTY ENGINEER

...
COUNTY ATTORNEY

ATTESTED:
CLERK OF THE CIRCUIT COURT
Louise V. Isaacs
Kathryn J. De