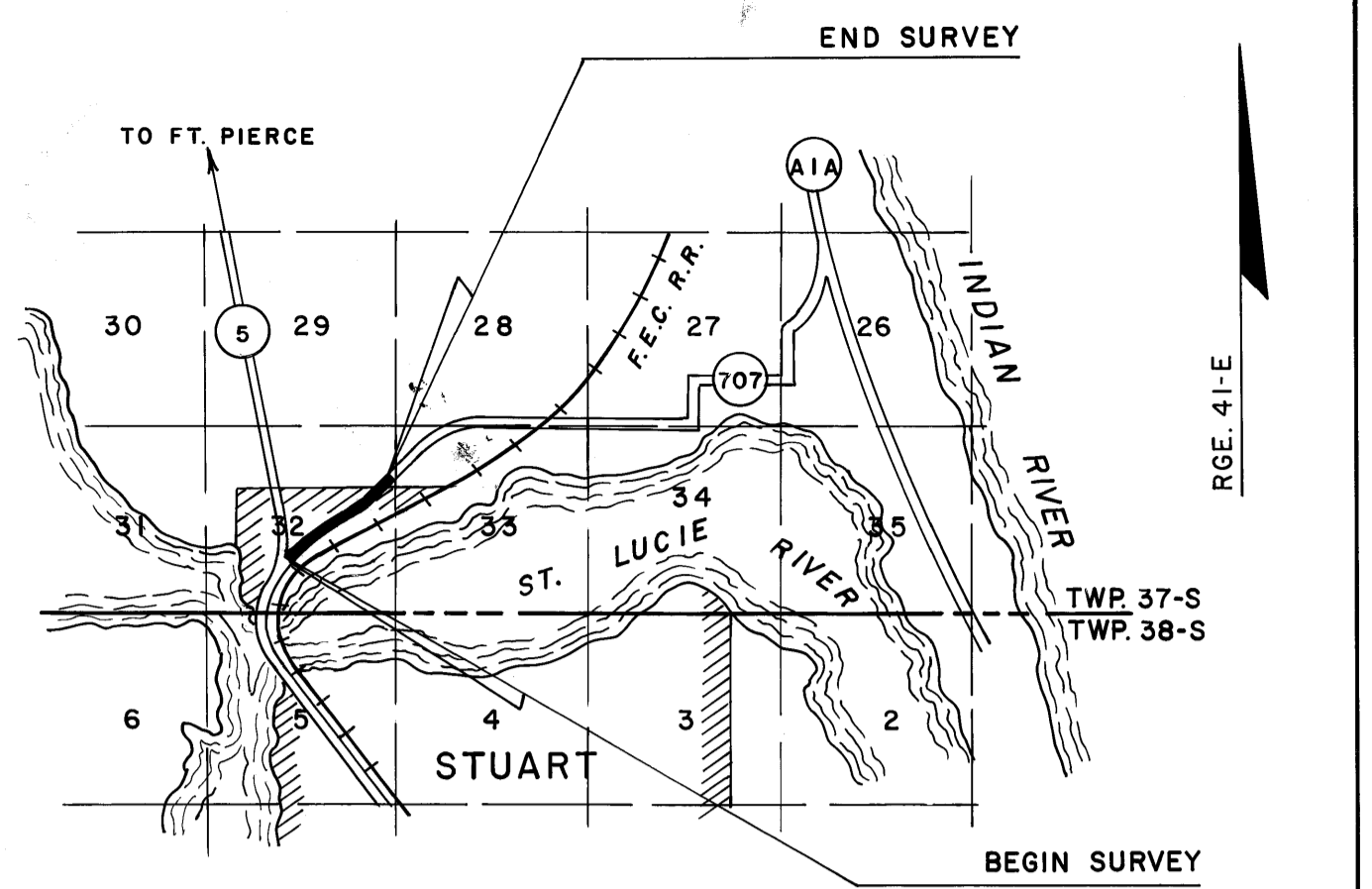


FED. ROAD DIV. NO.	STATE	F A PROJECT NO.	FISCAL YEAR	SHEET NO.
2	FLA.			

PB 7-30



LOCATION MAP
Scale: 1" = 1 Mile

Sec 32 Twp 37 S Rge 41 E
Scale: 1" = 100'

☉ SURVEY CURVE DATA
P.I. STA. 45 + 25.42
Δ = 02°41'30" LT.
D = 00°39'31"
T = 204.34'
L = 408.60'
R = 8697.71'

☉ SURVEY CURVE DATA
P.I. STA. 57 + 34.41
Δ = 05°38'16" LT.
D = 01°18'35"
T = 215.41'
L = 430.47'
R = 4374.79'

(89010 - 2205)
☉ SURVEY S.R.5 CURVE DATA (CHORD)
P.I. STA. 119 + 39.79
Δ = 35°56'15" LT.
D = 5°00'00"
R = 1146.28'
T = 371.76'
L = 718.75'

P.I. S.R.5
STA. 119 + 39.79 =
☉ STA. 30 + 72.89

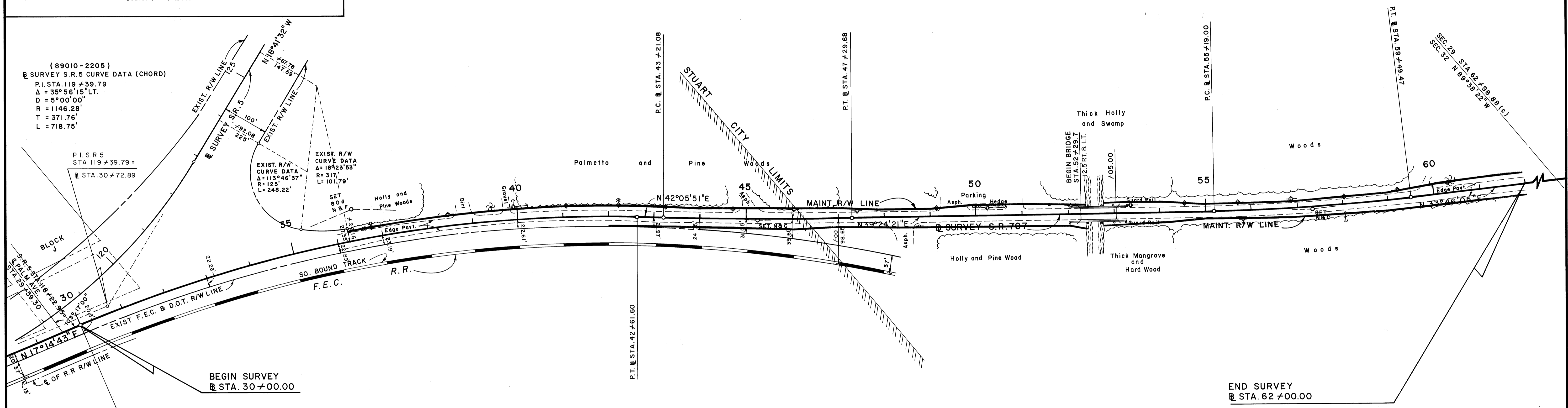
EXIST. R/W CURVE DATA
Δ = 113°46'37"
R = 125'
L = 248.22'

☉ SURVEY CURVE DATA
P.I. STA. 36 + 40.88
Δ = 24°51'08" RT.
D = 01°58'12"
T = 640.88'
L = 1261.60'
R = 2908.57'

MAINTENANCE R/W LINE STATION AND OFFSETS FROM ☉ SURVEY

STATION	LEFT	RIGHT
36 + 28	19'	
38 + 00	21'	
39 + 00	25'	
40 + 00	25'	
41 + 00	24'	
42 + 00	25'	22'
43 + 00	20'	21'
44 + 00	21'	23'
45 + 00	22'	23'
46 + 00	22'	22'
47 + 00	21'	20'
48 + 00	18'	20'
49 + 00	18'	23'
50 + 00	23'	24'
51 + 00	23'	24'
51 + 80	24'	24'
52 + 00	22'	20'
52 + 25		30'
53 + 00	12.5'	12.5'
53 + 20	23'	25'
54 + 00	23'	21'
55 + 00	17'	18'
56 + 00	18'	18'
57 + 00	16'	21'
58 + 00	17'	20'
59 + 00	17'	19'
60 + 00	20'	22'
61 + 00	23'	25'
62 + 00	23'	25'

NOTE:
LOCATION OF R.R. AND R.R. TIES ARE FROM
FIELD SURVEY BOOK NO. 1015529, IN YEAR 1977.



STATE OF FLORIDA
DEPARTMENT OF TRANSPORTATION
MAINTENANCE MAP

STATE ROAD NO. 707 (AIA) MARTIN COUNTY

BY	DATE	APPROVED BY	DATE
DRAWN BALOGH	5-18-77	<i>William F. ...</i>	5-22-77
TRACED BALOGH	5-18-77		
CHECKED HALL	5-18-77	<i>W.C. ...</i>	11-9-77

INDEXED

SECTION 89030 - SHEET 2 OF 2