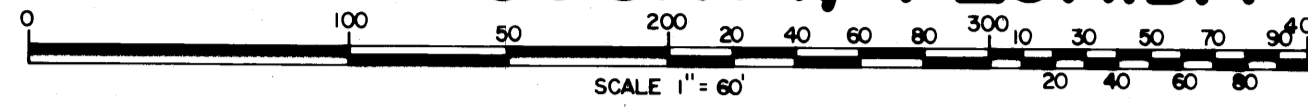


HERITAGE OAKS

A SUBDIVISION IN GOVERNMENT LOTS 2 & 3 IN SECTION 23, TOWNSHIP 40 SOUTH, RANGE 42 EAST, IN
MARTIN COUNTY, FLORIDA

SHEET 8 OF 8 SHEETS

JANUARY 1977

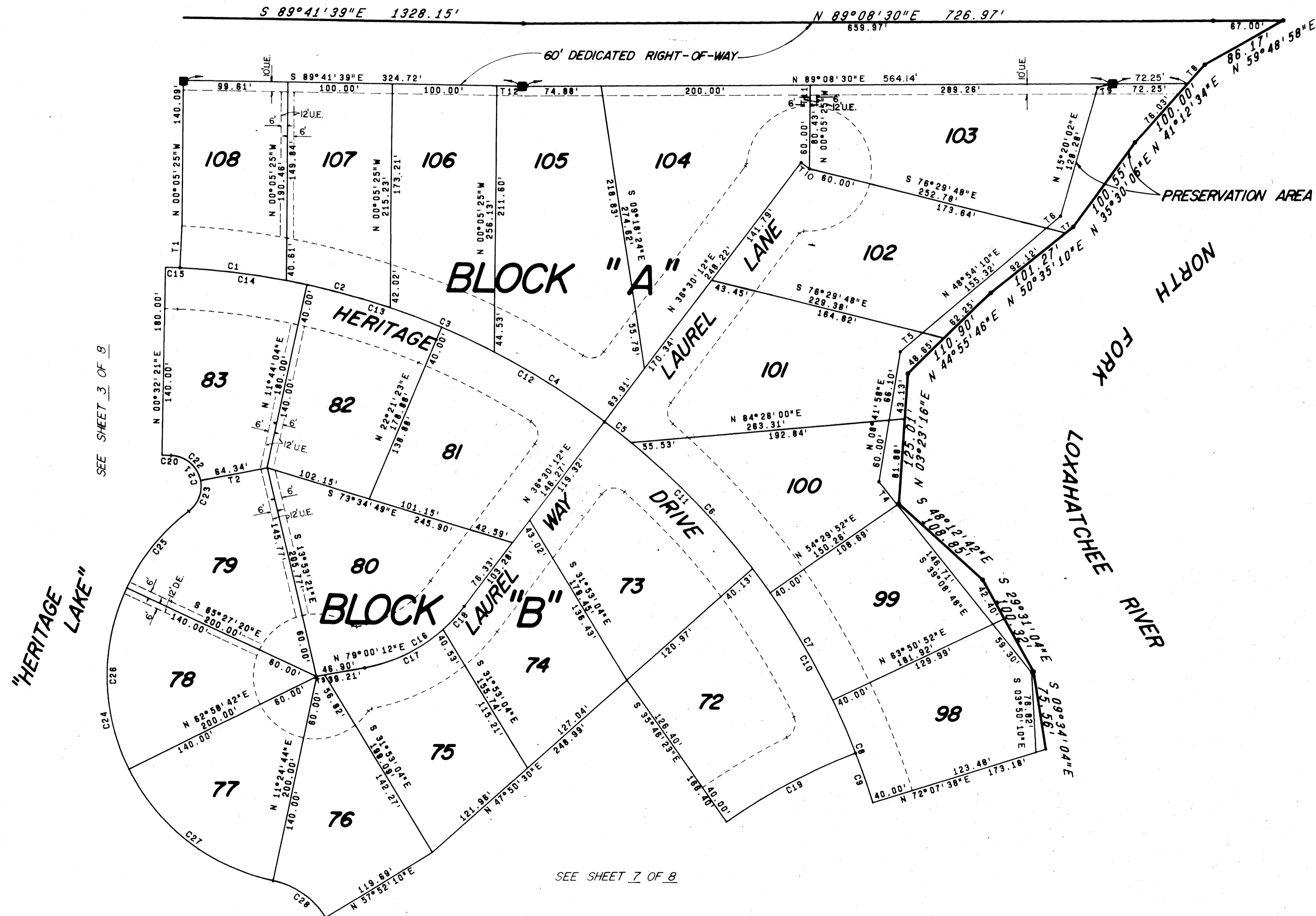


I, LOUISE V. ISAACS, CLERK OF THE CIRCUIT COURT OF MARTIN COUNTY, FLORIDA HEREBY CERTIFY THAT THIS PLAT WAS FILED FOR RECORD IN PLAT BOOK 7, PAGE 10, MARTIN COUNTY, FLORIDA, PUBLIC RECORDS THIS _____ DAY OF _____, 19____.

LOUISE V. ISAACS, CLERK
 CIRCUIT COURT
 MARTIN COUNTY, FLORIDA
 BY: _____
 DEPUTY CLERK

FILE NO. _____

JONATHAN DICKINSON STATE PARK



C	CH. BRG.	CHORD	RADIUS	DELTA	ARC	TANGENT
1	S 83°50'14"E	101.79'	731.23'	07°58'55"	101.87'	51.02'
2	S 75°48'01"E	103.19'	731.23'	08°05'32"	103.20'	51.72'
3	S 87°30'26"E	108.30'	731.23'	08°29'38"	108.40'	54.30'
4	S 58°22'42"E	124.46'	731.23'	09°45'49"	124.81'	62.48'
5	S 52°14'16"E	132.12'	731.23'	09°31'02"	132.13'	66.07'
6	S 43°14'27"E	156.92'	731.23'	15°28'37"	157.52'	89.37'
7	S 30°49'38"E	119.20'	731.23'	09°21'00"	119.33'	59.80'
8	S 22°00'45"E	105.57'	731.23'	08°16'48"	105.87'	52.92'
9	S 19°51'11"E	50.54'	731.23'	03°57'38"	50.55'	25.28'
10	S 29°47'20"E	202.41'	731.23'	15°54'40"	203.06'	102.19'
11	S 45°37'14"E	200.40'	731.23'	15°45'07"	201.03'	101.15'
12	S 60°34'12"E	180.09'	731.23'	14°08'49"	180.55'	90.74'
13	S 72°57'17"E	135.37'	731.23'	10°37'18"	135.56'	67.99'
14	S 83°02'49"E	121.90'	731.23'	09°33'46"	122.04'	61.16'
15	S 89°38'41"E	13.82'	485.00'	01°37'57"	13.82'	6.91'
16	N 57°45'12"E	112.36'	155.00'	42°30'00"	114.97'	60.29'
17	N 83°20'08"E	83.72'	155.00'	31°20'08"	84.77'	43.47'
18	N 42°05'09"E	30.16'	155.00'	11°08'54"	30.20'	15.15'
19	N 61°11'49"E	140.03'	577.00'	13°56'23"	140.38'	70.54'
20	S 88°38'41"E	8.69'	305.00'	01°37'57"	8.69'	4.35'
21	N 17°56'48"W	56.15'	29.80'	139°45'48"	72.94'	81.82'
22	S 49°39'13"E	36.96'	29.80'	78°20'58"	39.84'	23.51'
23	N 20°13'40"E	31.43'	29.80'	83°24'50"	33.09'	18.47'
24	N 13°19'35"W	383.29'	200.00'	130°51'21"	455.81'	434.08'
25	N 38°14'23"E	94.70'	200.00'	27°23'25"	95.81'	48.74'
26	N 01°14'18"W	173.99'	200.00'	51°33'58"	180.00'	96.61'
27	S 52°48'17"E	173.99'	200.00'	51°33'58"	180.00'	96.61'
28	S 55°21'33"E	61.91'	78.49'	46°27'26"	63.84'	33.89'

T	BEARING	DISTANCE
1	N 02°10'18"E	40.00'
2	N 78°31'15"E	64.34'
3	N 79°00'12"E	7.70'
4	S 39°08'48"E	28.23'
5	N 48°54'10"E	28.19'
6	N 48°54'10"E	18.17'
7	S 50°35'10"E	9.15'
8	N 41°12'34"E	23.97'
9	N 75°38'32"E	14.77'
10	S 53°29'48"E	10.00'
11	N 00°05'25"W	20.43'
12	S 89°41'39"E	25.12'