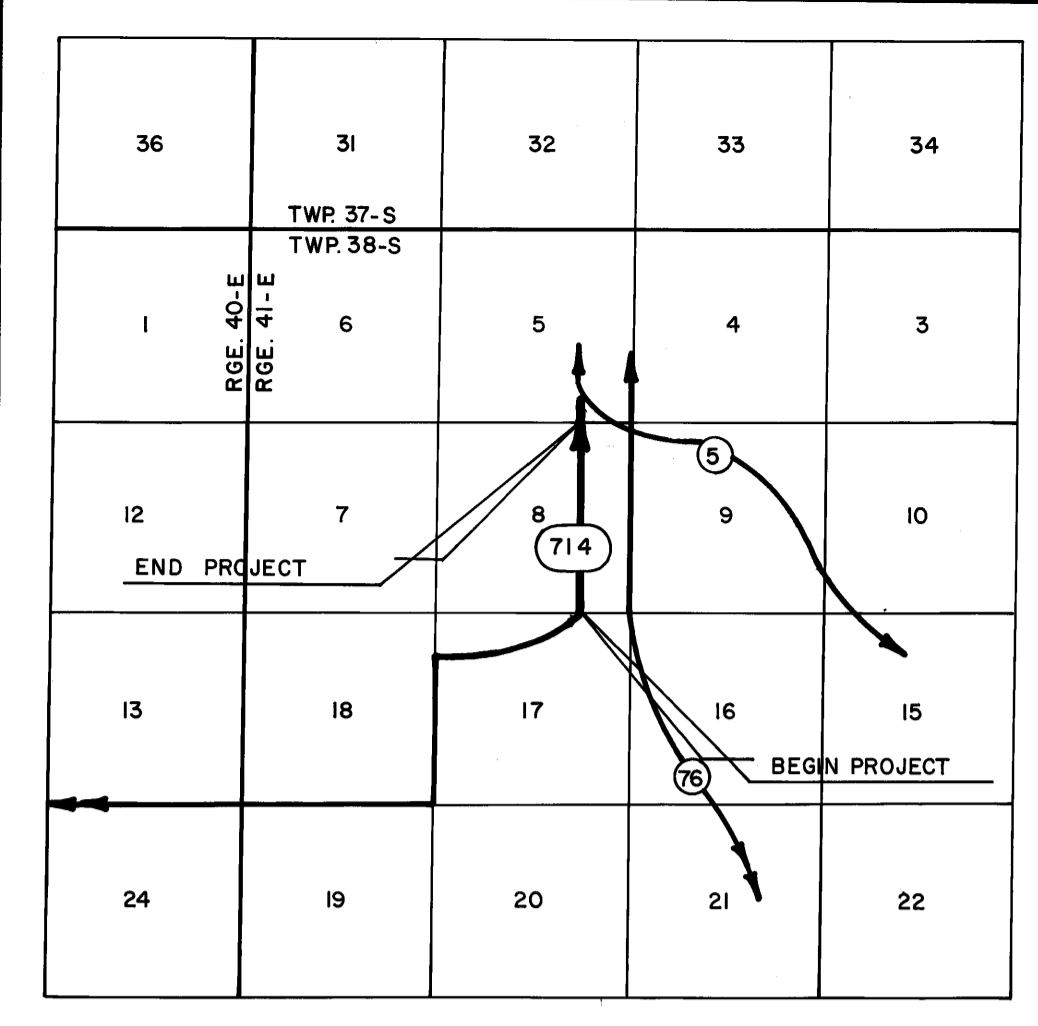
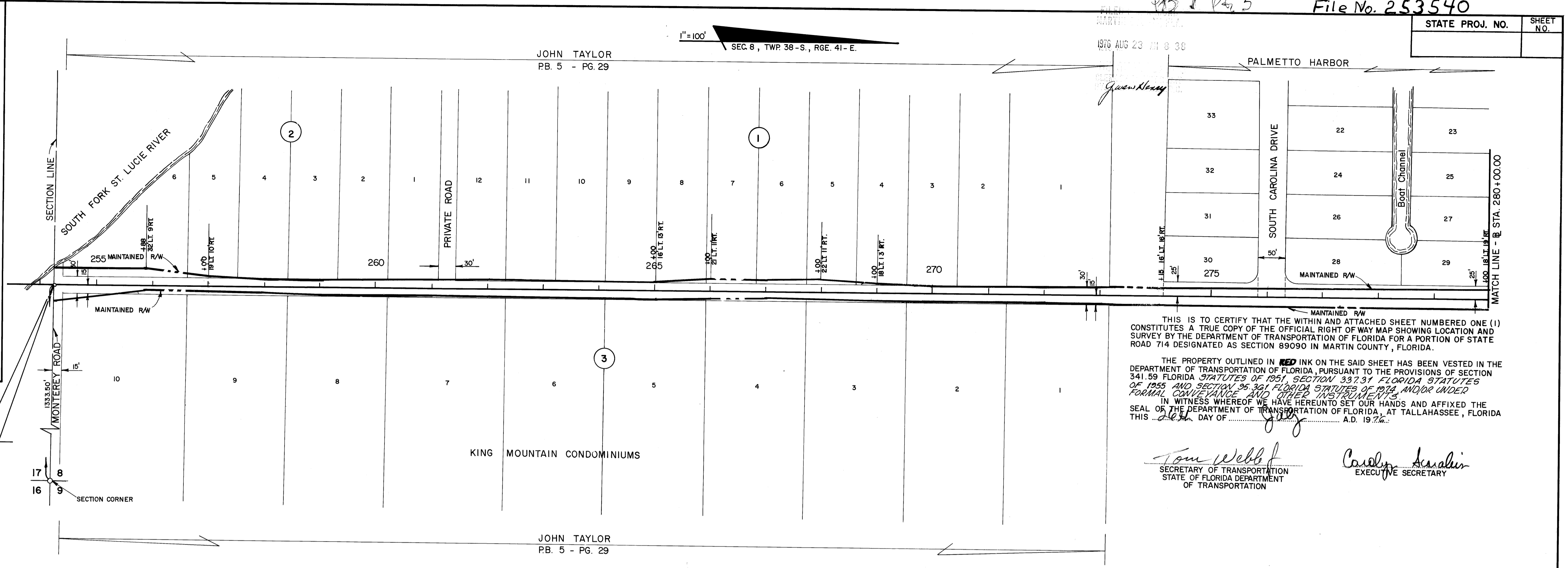


STATE PROJ. NO.	SHEET NO.



LOCATION MAP
SCALE: 1" = 1 MILE

BEGIN PROJECT (89090 - 2505)
SURVEY STA. 254+23.70



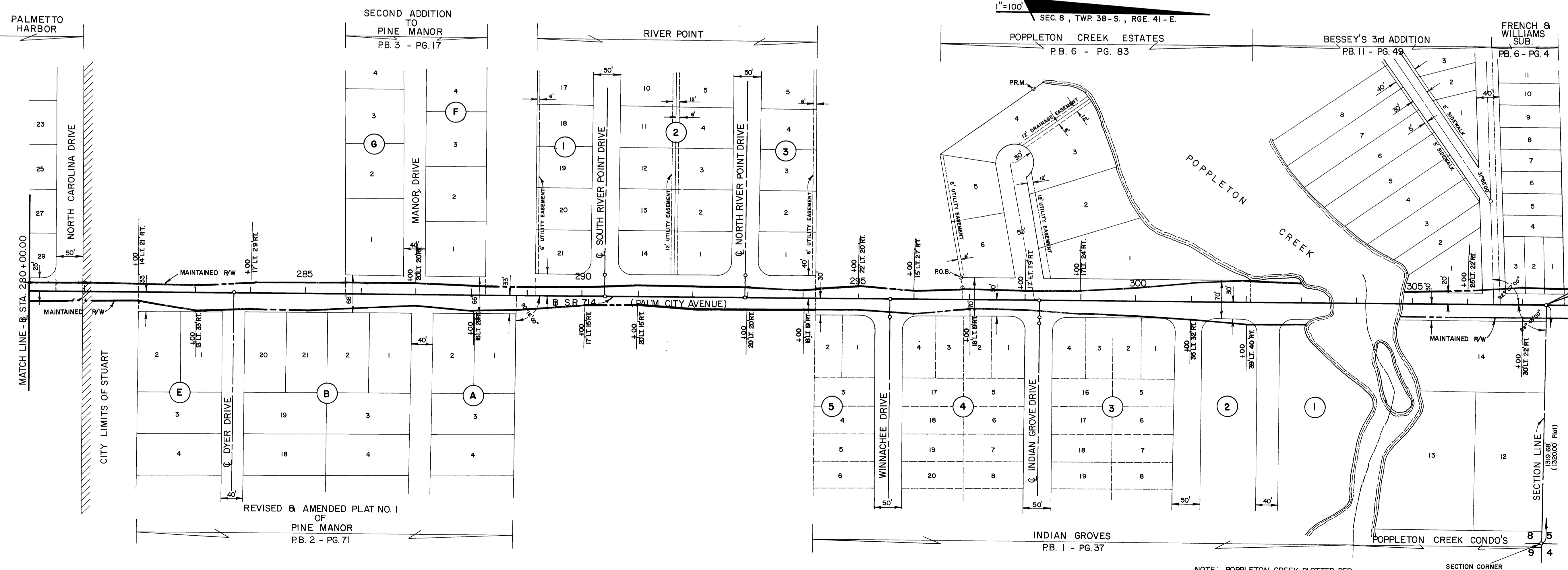
THIS IS TO CERTIFY THAT THE WITHIN AND ATTACHED SHEET NUMBERED ONE (1) CONSTITUTES A TRUE COPY OF THE OFFICIAL RIGHT OF WAY MAP SHOWING LOCATION AND SURVEY BY THE DEPARTMENT OF TRANSPORTATION OF FLORIDA FOR A PORTION OF STATE ROAD 714 DESIGNATED AS SECTION 89090 IN MARTIN COUNTY, FLORIDA.

THE PROPERTY OUTLINED IN RED INK ON THE SAID SHEET HAS BEEN VESTED IN THE DEPARTMENT OF TRANSPORTATION OF FLORIDA, PURSUANT TO THE PROVISIONS OF SECTION 341.59 FLORIDA STATUTES OF 1951, SECTION 337.31 FLORIDA STATUTES OF 1955 AND SECTION 95.301 FLORIDA STATUTES OF 1974 AND/OR UNDER FORMAL CONVEYANCE AND OTHER INSTRUMENTS.

IN WITNESS WHEREOF WE HAVE HEREUNTO SET OUR HANDS AND AFFIXED THE SEAL OF THE DEPARTMENT OF TRANSPORTATION OF FLORIDA, AT TALLAHASSEE, FLORIDA THIS 23 DAY OF July A.D. 1976.

Tom Webb
SECRETARY OF TRANSPORTATION
STATE OF FLORIDA DEPARTMENT
OF TRANSPORTATION

Casidy Arsalin
EXECUTIVE SECRETARY



THIS IS TO CERTIFY THAT THE RIGHT OF WAY LIMITS AS SHOWN ON THIS MAP HAVE BEEN MAINTAINED CONTINUOUSLY FOR FOUR (4) YEARS IMMEDIATELY PAST WITHOUT INTERRUPTION OR DISTURBANCE BETWEEN MILE POSTS 14.654 AND 15.662 (S.L.D.)

J.R. Phelan
MAINTENANCE ENGINEER

ACCEPTED FOR FILES AND RECORDED IN THE PUBLIC RECORDS OF MARTIN COUNTY, FLORIDA, THIS 23 DAY OF August A.D. 1976 IN RIGHT OF WAY PLAT BOOK 7 PAGE 3

Louise U.T. Saacs
CLERK OF CIRCUIT COURT
CLERK OF
MARTIN COUNTY FLORIDA
By: *James Henry, W.C.*

END PROJECT (89090 - 2505)
SURVEY STA. 307+40.90

(PALM CITY AVENUE)

STATE OF FLORIDA
STATE ROAD DEPARTMENT

MAINTENANCE MAP

STATE ROAD NO. 714 MARTIN COUNTY

DRAWN	DEBBIE	DATE	10/75
TRACED	DEBBIE	DATE	10/75
CHECKED			
COMPARED			
INDEXED			

APPROVED BY: *William E. Smith*
DISTRICT ENGINEER

Paul R. Ruffalo
ENGINEER OF RIGHTS OF WAY

STATE HIGHWAY ENGINEER

SECTION 89090 - 2505 SHEET 4 OF 1

NOTE: POPPLETON CREEK PLOTTED PER PLAT OF INDIAN GROVES, PB. 1 AT PAGE 37.

PLEASE RETAIN THIS SHEET FOR STANDARD MYLAR SHEET YOUR PERMANENT FILES.