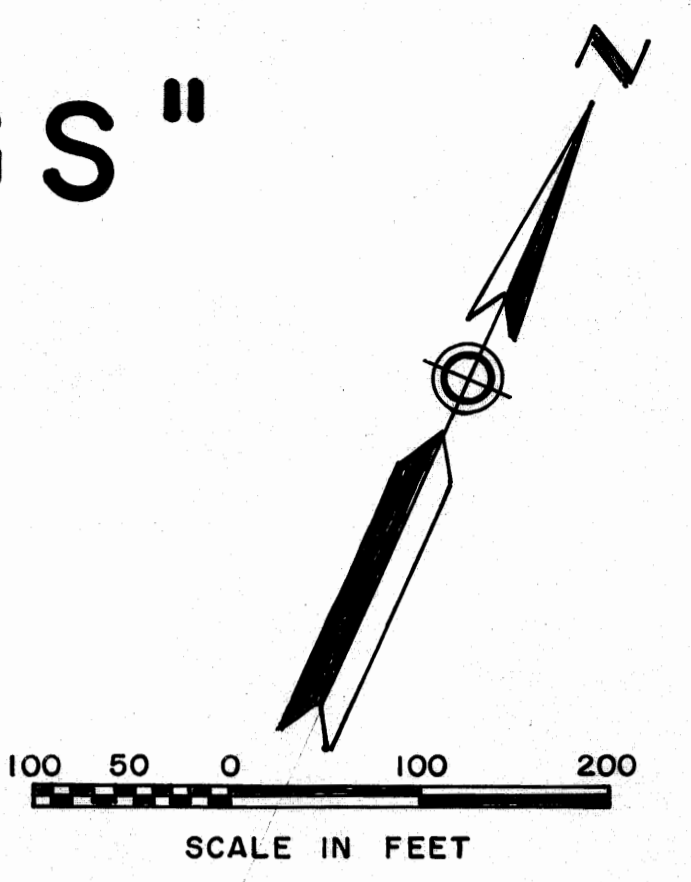


"THE SOUNDINGS"

A REPLAT IN
GOMEZ GRANT
MARTIN COUNTY, FLORIDA
IN 2 SHEETS SHEET NO. 2

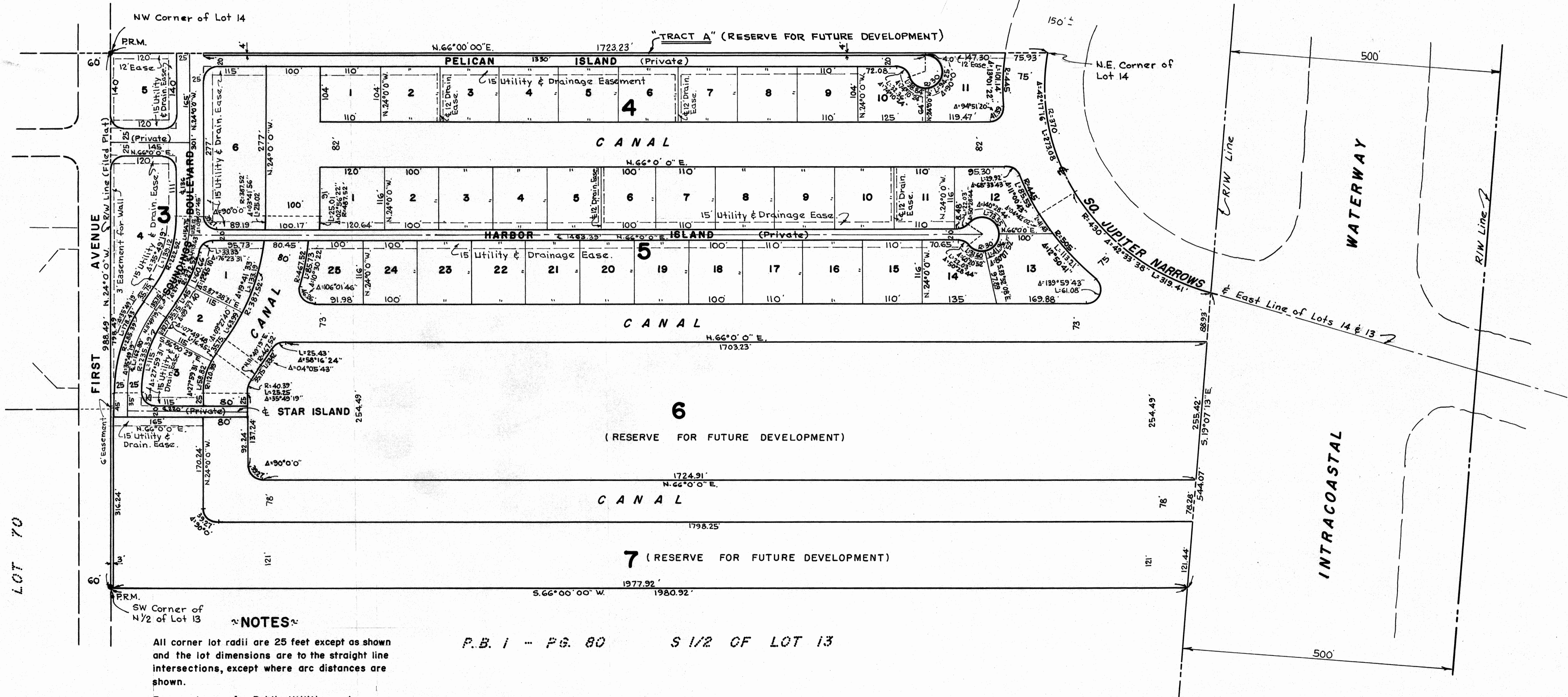
GEE & JENSON
CONSULTING ENGINEERS
WEST PALM BEACH, FLORIDA
DECEMBER 1970



GOMEZ GRANT & JUPITER ISLAND
P.B. 1 - PG. 80 LOT 15

SHEET NO. 1

LOT 70



NOTES

All corner lot radii are 25 feet except as shown and the lot dimensions are to the straight line intersections, except where arc distances are shown.
Easements are for Public Utilities unless otherwise noted.

P.B. 1 - PG. 80 S 1/2 OF LOT 13