

FILED FOR RECORD
MARTIN COUNTY, FLA.
71 JAN 18 PM 4:36
DOROTHY PRINCE
CLERK OF CIRCUIT COURT
STUART, FLA.

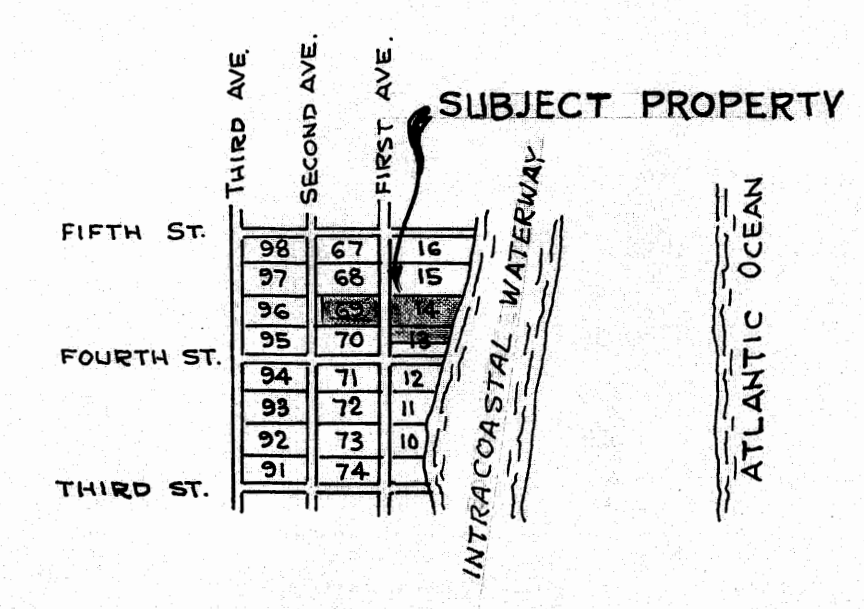
I HEREBY CERTIFY that I have examined this Plat and find that it complies in form with Chapter 177 Florida Statutes, and was Filed for Record in PLAT BOOK 5, PAGES 3 and 4, this 18 day of JANUARY, A.D. 1971, in the office of the Clerk of the Circuit Court at Stuart, Martin County, Florida. Dorothy Prince
Clerk of the Circuit Court

File No. 153563

SURVEYORS
Certificate
See survey
Certificate
located in
O.R. Book 394,
Page 1334,
Marsha Stillee
Clerk of
Circuit Court
by J. J. Cannon
D.C. 9-19-72



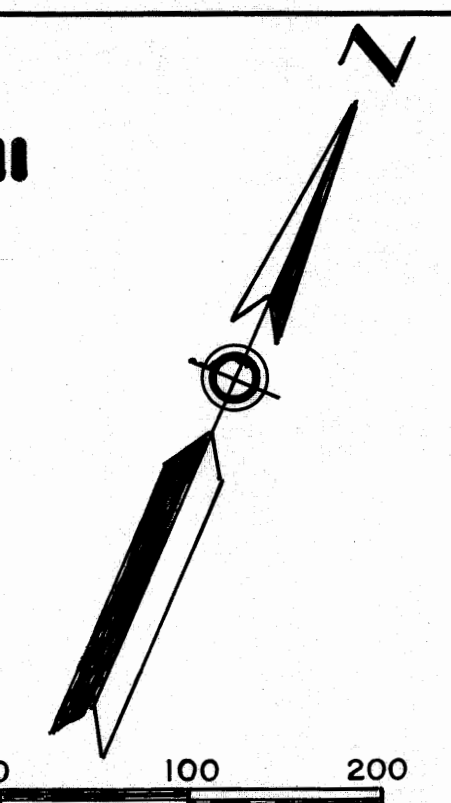
LOCATION SKETCH
SCALE: 1" = 50 CHAINS



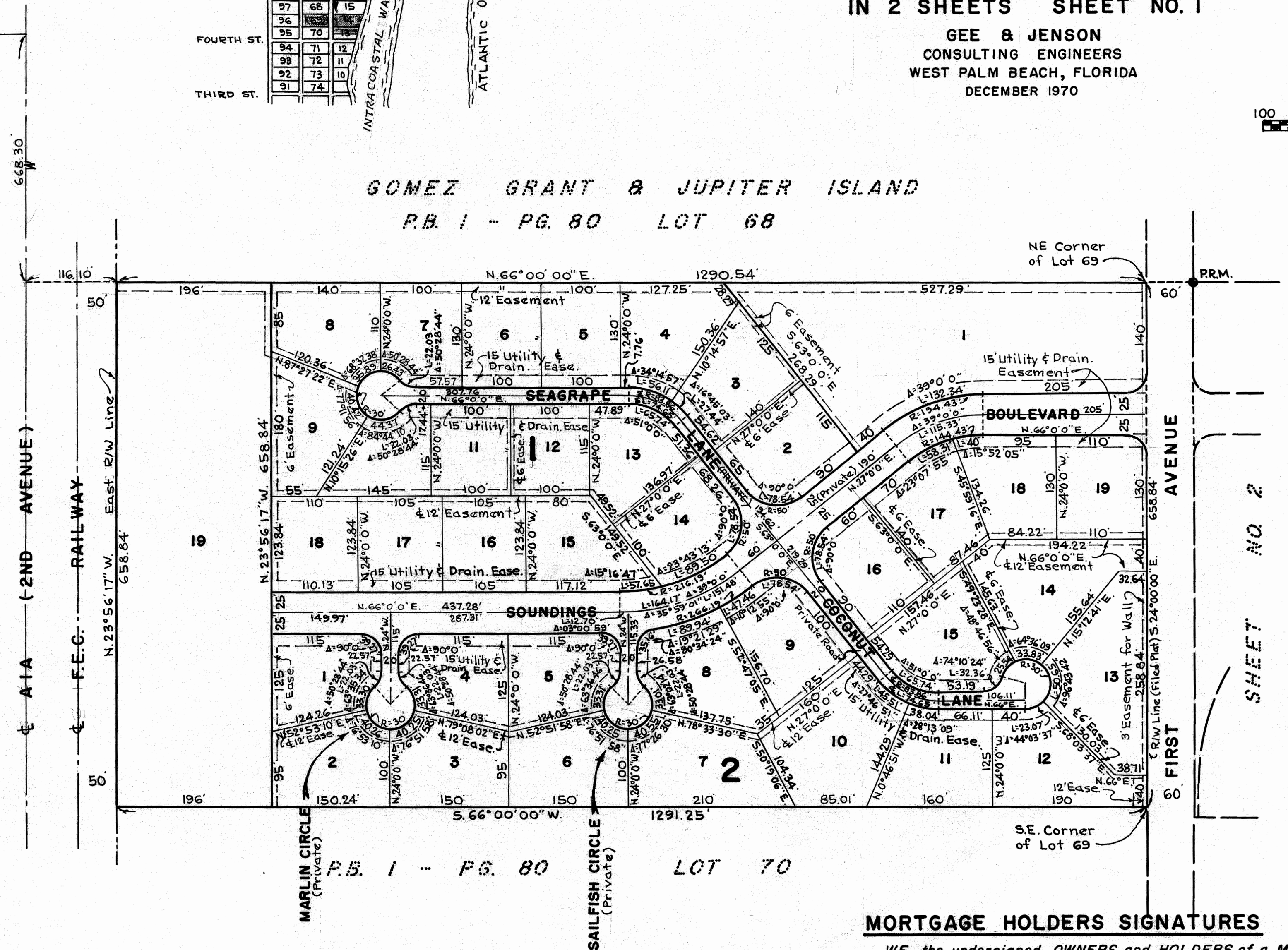
PLAT OF
"THE SOUNDINGS"
A REPLAT IN
GOMEZ GRANT

MARTIN COUNTY, FLORIDA
IN 2 SHEETS SHEET NO. 1

GEE & JENSON
CONSULTING ENGINEERS
WEST PALM BEACH, FLORIDA
DECEMBER 1970



GOMEZ GRANT & JUPITER ISLAND
P.B. 1 - PG. 80 LOT 68



P.B. 1 - PG. 80
LOT 96

DESCRIPTION & DEDICATION

STATE OF FLORIDA
COUNTY OF MARTIN ss
KNOW ALL MEN BY THESE PRESENTS, that HOBE SOUND NORTH INC., a Florida Corporation and JOEL F. PYLE, SR., a Single Person, the owners of the tract of land lying and being in Gomez Grant, Martin County, Florida, shown hereon as "THE SOUNDINGS" and more particularly described as follows, to wit:
Lots 69 and 14 and the North One Half (N1/2) of Lot 13, GOMEZ GRANT AND JUPITER ISLAND, Martin County, Florida, according to the plat thereof on file in the office of the Clerk of the Circuit Court in and for Dade County, Florida, recorded in Plat Book A, Page 17, lying West of the Westerly Right-of-Way Line of the Intra-coastal Waterway as described in Deed recorded in Deed Book 25, Pages 336 and 426, Public Records of Martin County, Florida.
LESS the Right-of-Way for the Florida East Coast Railway. Containing 63 Acres, more or less.

has caused the same to be surveyed and platted as shown hereon, and does hereby dedicate to the perpetual use of the public, the use of the Easements for the construction and maintenance of Public Utilities and/or Drainage Purposes.
AND FURTHERMORE, the Owners do hereby dedicate to the Property Owners of this Subdivision, the Streets and Canals as shown, as means of ingress and egress for themselves, their heirs and company.
IN WITNESS WHEREOF, the said Corporation has caused these presents to be signed by its President and attested by its Assistant-Secretary and its corporate seal to be affixed hereto, by and with the authority of its Board of Directors, joined by JOEL F. PYLE, SR., a Single Person, this 8 day of JANUARY, A.D. 1971.

HOBE SOUND NORTH INC.
Attest: Albert C. Schenholm, Jr. Assistant-Secretary
By: Albert C. Schenholm, Jr. (Corp. Seal) President
Attest: William H. Wallace, Jr. Witness
By: Joel F. Pyle, Sr. (Seal) JOEL F. PYLE, SR., a Single Person
Attest: William H. Wallace, Jr. Witness

ACKNOWLEDGMENT

STATE OF FLORIDA
COUNTY OF MARTIN ss
I HEREBY CERTIFY, that on this day personally appeared before me, an officer duly authorized to administer oaths and take acknowledgments, ALBERT C. SCHENHOLM, JR. and WILLIAM SCOTT, President and Assistant-Secretary, respectively, of HOBE SOUND NORTH INC., joined by JOEL F. PYLE, SR., a Single Person, and they acknowledged before me that they executed the foregoing dedication as such officers of such Corporation and as such Single Person.
WITNESS my hand and official seal at Stuart, County of Martin and State of Florida, this 8 day of January, A.D. 1971.

My Commission expires: July 26, 1974
Notary Public
Approved: A.O. Stroman, Jr. Chairman Planning & Zoning Board

NOTES
All corner lot radii are 25 feet except as shown and the lot dimensions are to the straight line intersections, except where arc distances are shown.
Easements are for Public Utilities unless otherwise noted.
Approved: January 12, A.D. 1971
Board of County Commissioners
By: William G. Myers Chairman
By: D. J. Sluder County Engineer

MORTGAGE HOLDERS SIGNATURES

WE, the undersigned, OWNERS and HOLDERS of a MORTGAGE on the hereon described property, hereby consent to this plat and join in the dedication.

By: Thelma Thomas Witness
By: Joseph Sipkind JOSEPH SIPKIND
By: Patrick Johnson Witness
By: Yetter Sipkind YETTER SIPKIND
By: Maureen E. Duffy Witness
By: Jack Kennedy JACK KENNEDY
By: Jean B. Johnson Witness
By: Virginia Kennedy VIRGINIA KENNEDY
By: Louise C. Cannon Witness
By: Stephen A. Spear STEPHEN A. SPEAR
By: Doris C. Cannon Witness
By: Josephine Spear JOSEPHINE SPEAR

SURVEYOR'S CERTIFICATION

STATE OF FLORIDA
COUNTY OF PALM BEACH ss
I HEREBY CERTIFY, that the plat shown hereon is a true and correct representation of a survey, made under my direction, of the foregoing described property, and that said survey is accurate to the best of my knowledge and belief, and that permanent reference monuments (P.R.M.) have been placed as required by law.

William H. Wallace, Jr.
Registered Land Surveyor
Florida Certificate No. 2283