

JENSEN HIGHLANDS

PLAT NO. THREE

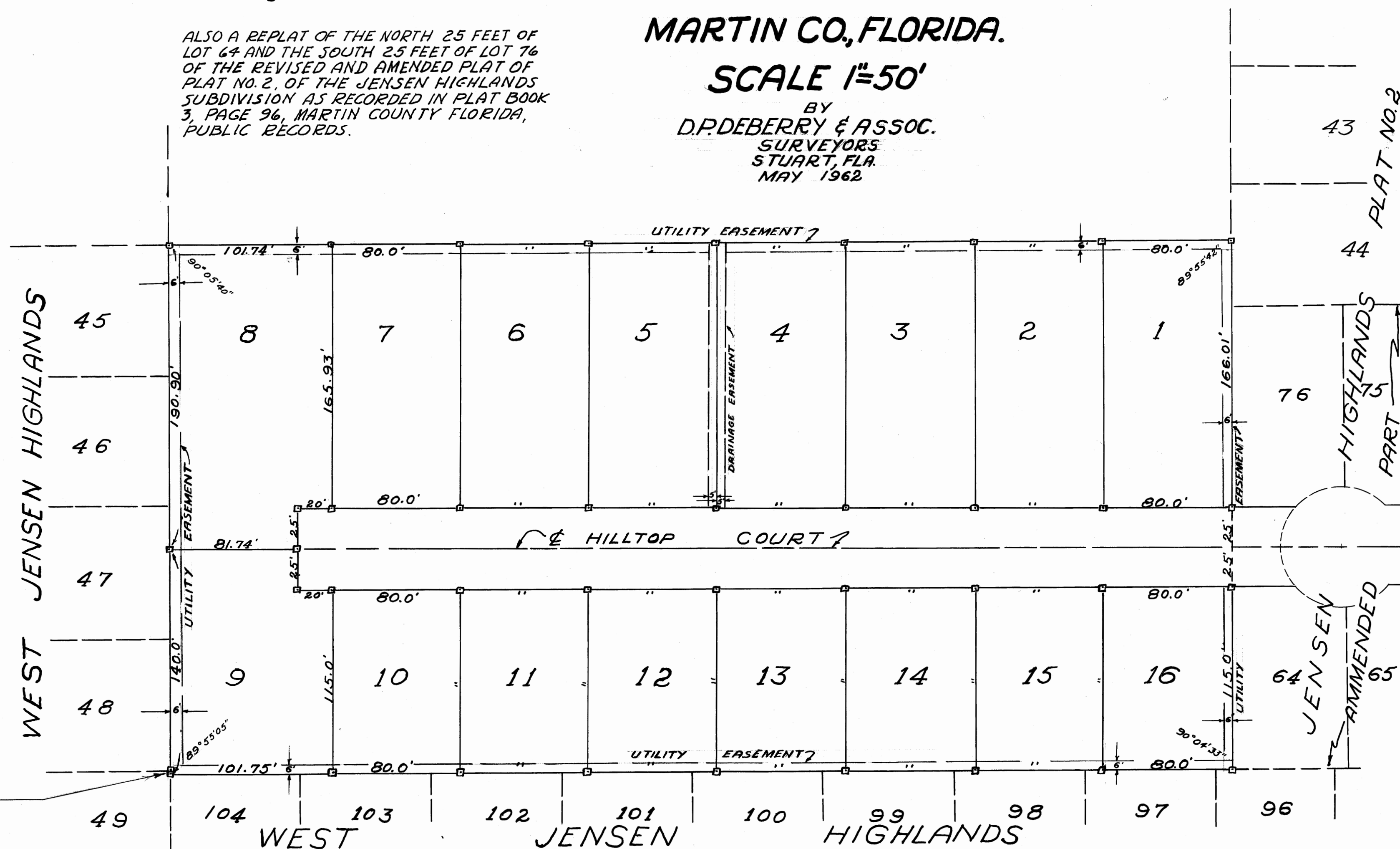
Being the E. 1/2 of the N 1/2 of the S 1/2 of the SW 1/4 of the NW 1/4 of Sec. 22, Twp 37S, Rge. 41E.

MARTIN CO., FLORIDA.

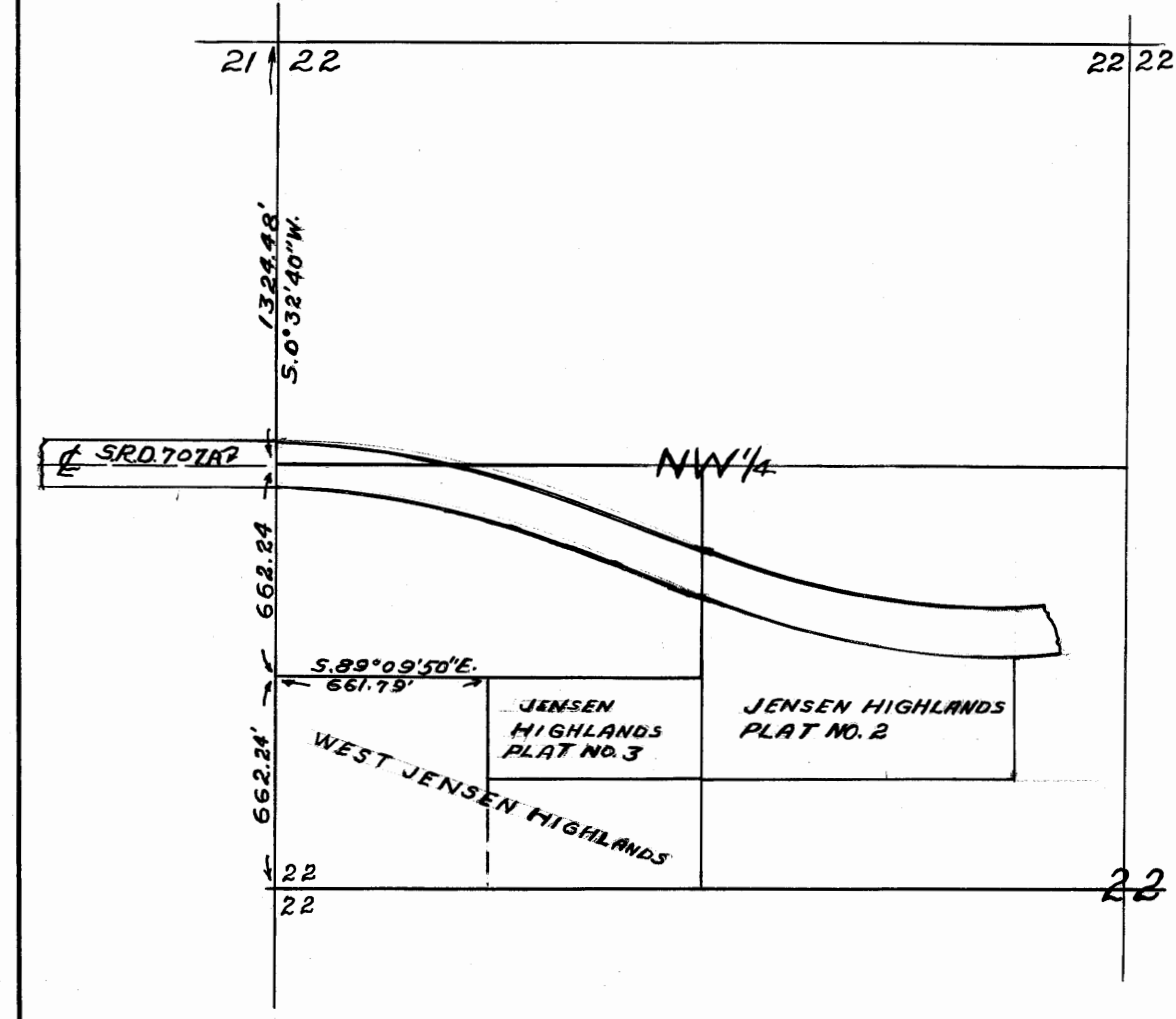
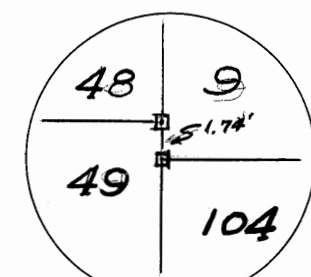
SCALE 1"=50'

BY
D.P. DEBERRY & ASSOC.
SURVEYORS
STUART, FLA.
MAY 1962

ALSO A REPLAT OF THE NORTH 25 FEET OF LOT 64 AND THE SOUTH 25 FEET OF LOT 76 OF THE REVISED AND AMENDED PLAT OF PLAT NO. 2, OF THE JENSEN HIGHLANDS SUBDIVISION AS RECORDED IN PLAT BOOK 3, PAGE 96, MARTIN COUNTY FLORIDA, PUBLIC RECORDS.



NOTE: CONCRETE MARKERS SHOWN THUS □



LOCATION MAP

APPROVED
BOARD OF COUNTY COMMISSIONERS
By Frank Carls on this 10 day of JULY 1962.
CHAIRMAN

DEDICATION

STATE OF FLORIDA
COUNTY OF MARTIN SS

Know all men by these presents that DREW KING, INC. a corporation organized and existing under the laws of the State of Florida, has caused the attached plat titled JENSEN HIGHLANDS PLAT NO. THREE, to be subdivided and platted as shown hereon and does hereby dedicate the perpetual use of the public the roads, and easements as shown hereon.

In witness whereof, it has caused these presents to be signed by its President and its Corporate Seal affixed and attested by its Secretary this 26 day of June 1962.

Witness: June D. Carlberg
Frank Carls

DREW KING, INC.
a Florida Corporation
By: Drew W. King Jr.
President
Attest: Frances C. King
Secretary

ACKNOWLEDGEMENT

STATE OF FLORIDA
COUNTY OF MARTIN SS

I hereby certify that on this day personally appeared before me, an officer duly authorized to administer oaths and take acknowledgments, DREW W. KING, JR. & FRANCES C. KING, well known to me to be the President and Secretary respectively of DREW KING, INC., a Florida corporation, and they acknowledged before me that they executed the same for the purpose therein expressed in behalf of said corporation and that they executed the same and placed the corporate seal thereon with authority of its Board of Directors.

Witness my hand and official seal at Stuart, Martin County, Florida, this 26 day of June 1962.

W.D.
Notary Public
My Commission Expires 5 February 1964

CERTIFICATE

STATE OF FLORIDA
COUNTY OF MARTIN SS

I Hereby Certify: That the attached plat is a true representation of a survey made under my direction and that it is true and correct to the best of my knowledge and belief and that permanent reference monuments have been properly placed as required by law.

Joseph S. Greenlees
Joseph S. Greenlees Reg. Land Surveyor
Florida Certificate No. 665

Subscribed and sworn to and before me at Stuart, Martin County, Florida this 31 day of May 1962.

W.D.
Notary Public
My Commission Expires 5 February 1964