

4-14 4-14

FILED & RECORDED
IN MARTIN COUNTY, FLA.
1962 MAR-5 AM 9:13
DOROTHY PIERCE, CLERK
By: Isabella H. Evans, R.C.

THIS PLAT FILED FOR RECORD
AT 9:13 AM THIS 5th DAY OF March,
A.D., 1962, IN PLAT BK. 4,
PG. 14, IN THE OFFICE OF
THE CLERK OF THE CIRCUIT
COURT, MARTIN COUNTY,
FLORIDA.
CLERK OF THE
CIRCUIT COURT
Dorothy Pierce,
By: Isabella H. Evans, R.C.
FILE NO. 26291

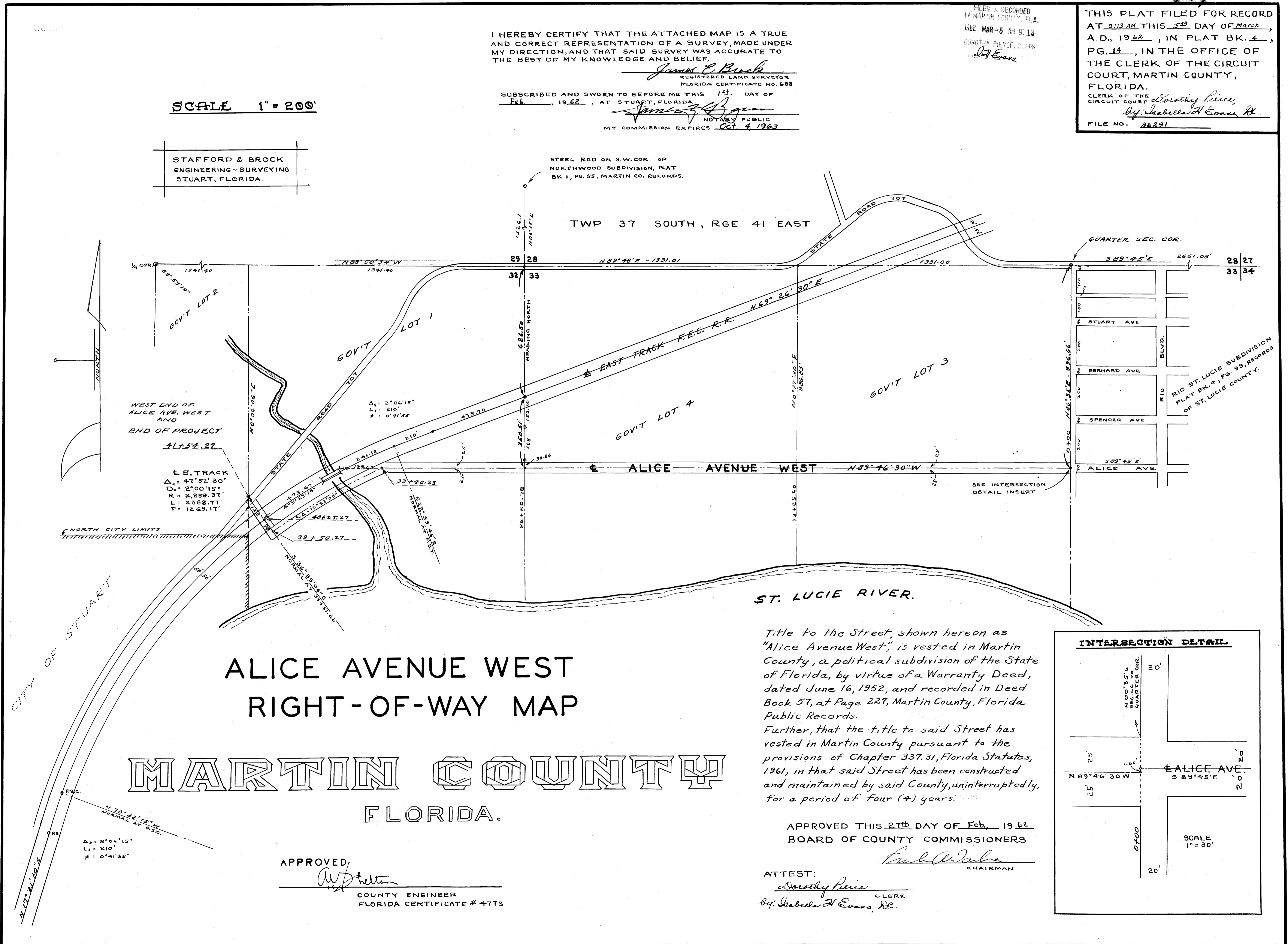
I HEREBY CERTIFY THAT THE ATTACHED MAP IS A TRUE
AND CORRECT REPRESENTATION OF A SURVEY, MADE UNDER
MY DIRECTION, AND THAT SAID SURVEY WAS ACCURATE TO
THE BEST OF MY KNOWLEDGE AND BELIEF.

James E. Brock
REGISTERED LAND SURVEYOR
FLORIDA CERTIFICATE NO. 688

SUBSCRIBED AND SWORN TO BEFORE ME THIS 1st DAY OF
Feb., 1962, AT STUART, FLORIDA.
James E. Brock
NOTARY PUBLIC
MY COMMISSION EXPIRES Oct. 4, 1963

SCALE 1" = 200'

STAFFORD & BROCK
ENGINEERING - SURVEYING
STUART, FLORIDA.



ALICE AVENUE WEST RIGHT-OF-WAY MAP

MARTIN COUNTY FLORIDA.

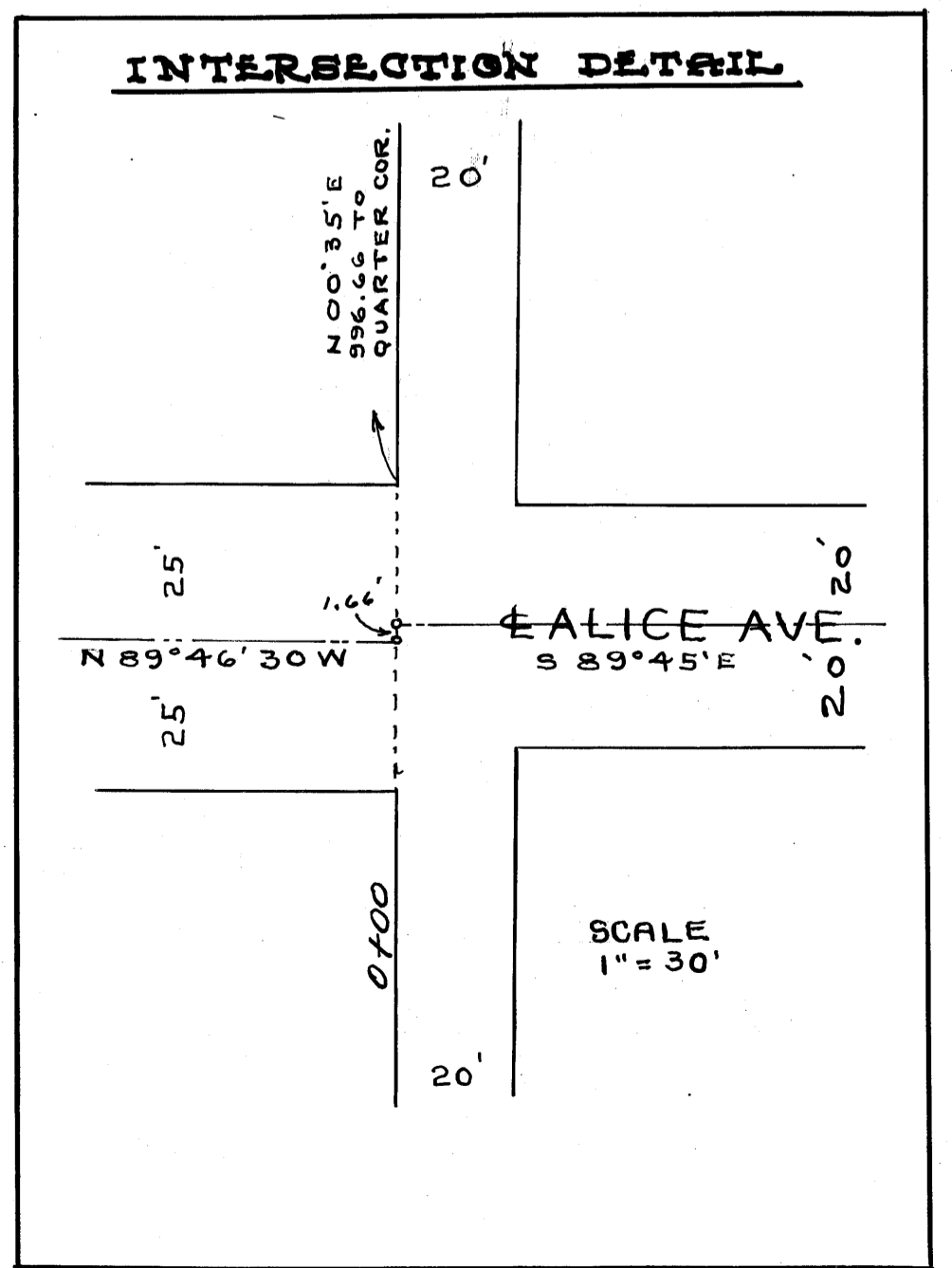
APPROVED:
[Signature]
COUNTY ENGINEER
FLORIDA CERTIFICATE # 4773

Title to the Street, shown hereon as "Alice Avenue West", is vested in Martin County, a political subdivision of the State of Florida, by virtue of a Warranty Deed, dated June 16, 1952, and recorded in Deed Book 57, at Page 227, Martin County, Florida Public Records.
Further, that the title to said Street has vested in Martin County pursuant to the provisions of Chapter 337.31, Florida Statutes, 1961, in that said Street has been constructed and maintained by said County, uninterruptedly, for a period of four (4) years.

APPROVED THIS 21st DAY OF Feb., 1962
BOARD OF COUNTY COMMISSIONERS

ATTEST:
Dorothy Pierce
CLERK
By: Isabella H. Evans, R.C.

[Signature]
CHAIRMAN



WEST END OF
ALICE AVE. WEST
AND
END OF PROJECT
41+54.27
E. TRACK
D_s = 47° 52' 30"
D_c = 2° 00' 15"
R = 2,859.37'
L = 2,588.77'
T = 12.69.17'

NORTH CITY LIMITS

CITY OF STUART

STEEL ROD ON S.W. COR. OF
NORTHWOOD SUBDIVISION, PLAT
BK 1, PG. 55, MARTIN CO. RECORDS.

TWP 37 SOUTH, RGE 41 EAST

QUARTER SEC. COR.

RIO ST. LUCIE SUBDIVISION
PLAT BK. 4, PG. 99, RECORDS
OF ST. LUCIE COUNTY.

SEE INTERSECTION
DETAIL INSERT

ST. LUCIE RIVER.

D_s = 2° 06' 15"
L_s = 210'
Δ = 0° 41' 55"

N 70° 32' 15" W
NORMAL AT P.S.C.

N 17° 21' 30" E

41+54.27
473.47
209.20.18
40+25.27
39+50.27
33+40.23
241.18
210'
415.70
26+50.78
30.86
26+50.78
N 0° 17' 59" E
586.83'

1341.90
88° 59' 15"
1341.90
N 88° 50' 34" W

1326.1
N 80° 15' E

N 89° 48' E - 1331.01

1331.00

589° 45' E 2651.08'

28 27
33 34

E EAST TRACK F.E.C. R.R. N 69° 26' 30" E

GOV'T LOT 4

GOV'T LOT 3

GOV'T LOT 1

GOV'T LOT 2

STUART AVE
BERNARD AVE
SPENCER AVE
ALICE AVE

RIO BLYD.