

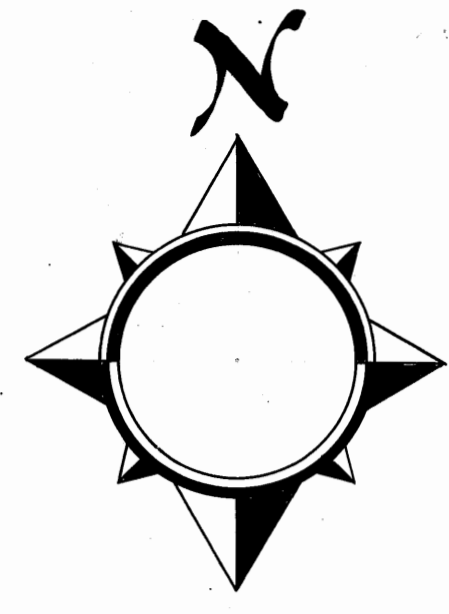
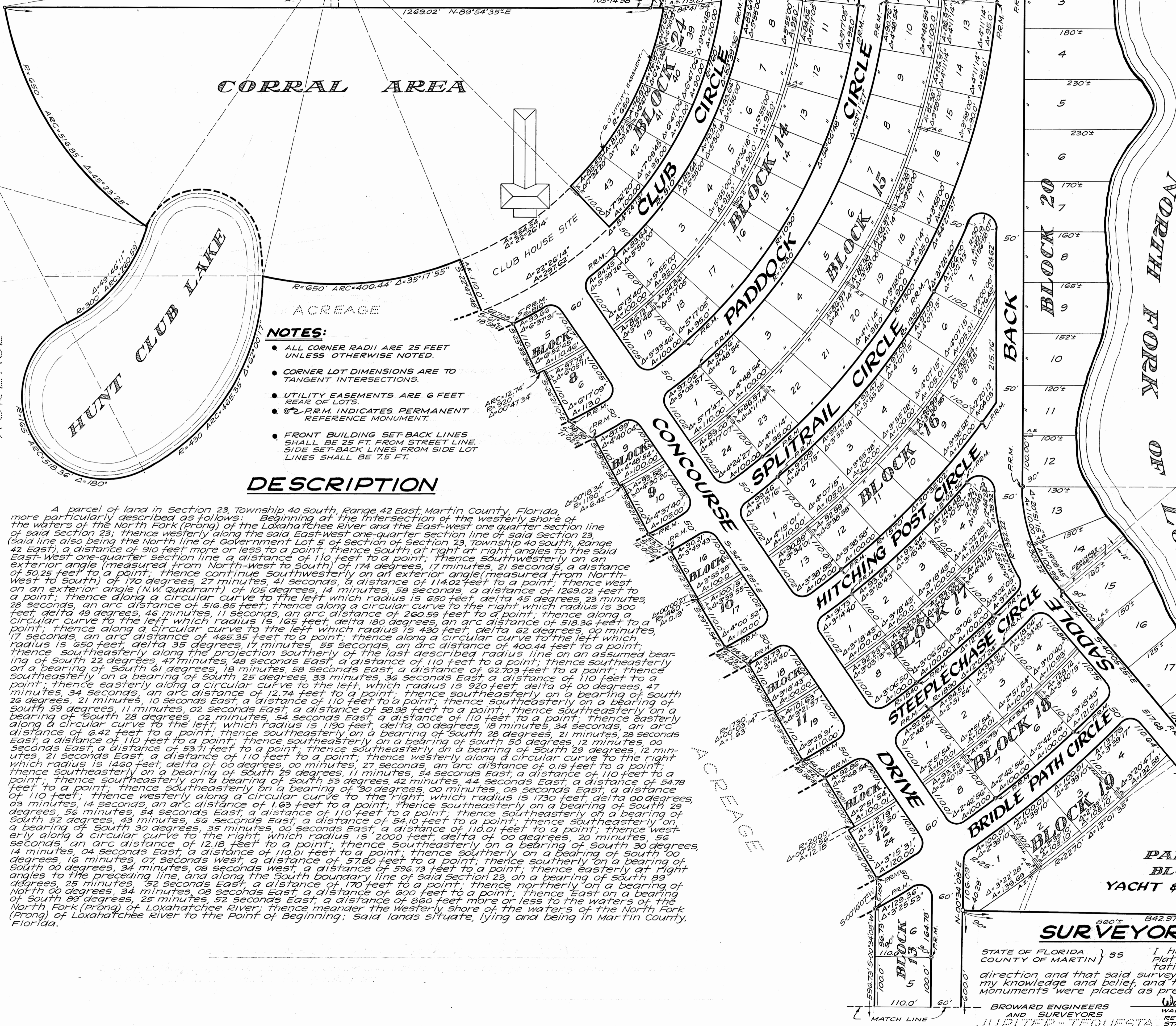
FLORIDA EAST SHORE PROPERTIES, INC.
-Developers-

JUPITER-TEQUESTA

Hunt Club Colony

BROWARD ENGINEERS AND SURVEYORS
FT. LAUDERDALE FLORIDA

SECTION A
A SUBDIVISION IN SECTION 23, TWP. 40 S., RGE. 42 E., MARTIN CTY., FLA.



I hereby certify that I have examined the attached plat and find that it complies in form with Chapter 177, Florida Statutes, and was filed in Plat Book 4 page 5 this 14th day of NOVEMBER A.D. 1961. in the Office of the Clerk of the Circuit Court, at Stuart, Florida.

Dorothy Perie
CLERK OF THE CIRCUIT COURT
by *Seabird & Evans, PC*

FILE NO. 84290

DEDICATION

STATE OF FLORIDA } ss KNOW ALL MEN BY THESE PRESENTS
COUNTY OF MARTIN } that Florida East Shore Properties, Inc., a Florida Corporation, owner of the land shown hereon, has caused said land to be surveyed and plotted as shown hereon, and do hereby dedicate to the perpetual use of the public, the roads, concourses, drives, circles, bridle paths, lake, and easements shown hereon for proper purposes.

IN WITNESS WHEREOF, we hereunto set our hands and seal this day of NOVEMBER A.D. 1961.

Kenneth A. Schmidt WITNESS
Charles P. Martyn CHARLES P. MARTYN, PRESIDENT
Frank J. Wada WITNESS
William Lord WILLIAM LORD, ATTORNEY SECRETARY

ACKNOWLEDGEMENTS

STATE OF FLORIDA } ss Before me personally appeared
COUNTY OF MARTIN } this day, Charles P. Martyn and William Lord, President and secretary respectively of Florida East Shore Properties, Inc., who acknowledged to and before me that they executed the foregoing Dedication of Plat for the uses and purposes therein stated, witness my hand and seal this 1st day of NOVEMBER A.D. 1961.

Richard B. Wiggins
NOTARY PUBLIC
MY COMMISSION EXPIRES: SEPT. 30, 1965.

COUNTY COMMISSIONERS

This plat is hereby approved by the Board of County Commissioners of Martin County, Florida.

Frank J. Wada
CHAIRMAN OF THE BOARD

COUNTY ENGINEER

This plat is hereby approved by the COUNTY ENGINEER.

W. Shelton

NOTES:

- ALL CORNER RADII ARE 25 FEET UNLESS OTHERWISE NOTED.
- CORNER LOT DIMENSIONS ARE TO TANGENT INTERSECTIONS.
- UTILITY EASEMENTS ARE 6 FEET REAR OF LOTS.
- PR.M. INDICATES PERMANENT REFERENCE MONUMENT.
- FRONT BUILDING SET-BACK LINES SHALL BE 25 FT. FROM STREET LINE, SIDE SET-BACK LINES FROM SIDE LOT LINES SHALL BE 7.5 FT.

DESCRIPTION

A parcel of land in Section 23, Township 40 South, Range 42 East, Martin County, Florida, more particularly described as follows: Beginning at the intersection of the westerly shore of the waters of the North Fork (prong) of the Loxahatchee River and the East-West one-quarter section line of said Section 23; thence westerly along the said East-West one-quarter section line of said Section 23, (said line also being the North line of Government Lot 5 of Section 23, Township 40 South, Range 42 East), a distance of 910 feet more or less to a point; thence south at right angles to the said East-West one-quarter section line a distance of 110 feet to a point; thence southwesterly on an exterior angle (measured from North-West to south) of 174 degrees, 17 minutes, 21 seconds, a distance of 50.25 feet to a point; thence continue southwesterly on an exterior angle (measured from North-West to south) of 170 degrees, 27 minutes, 41 seconds, a distance of 114.02 feet to a point; thence west on an exterior angle (N.W. quadrant) of 105 degrees, 14 minutes, 58 seconds, a distance of 1269.02 feet to a point; thence along a circular curve to the right which radius is 650 feet, delta 45 degrees, 23 minutes, 28 seconds, an arc distance of 516.85 feet; thence along a circular curve to the right which radius is 900 feet, delta 49 degrees, 46 minutes, 11 seconds, an arc distance of 260.59 feet to a point; thence along a circular curve to the left which radius is 105 feet, delta 180 degrees, an arc distance of 518.36 feet to a point; thence along a circular curve to the left which radius is 430 feet, delta 62 degrees, 00 minutes, 17 seconds, an arc distance of 465.35 feet to a point; thence along a circular curve to the left which radius is 150 feet, delta 35 degrees, 17 minutes, 53 seconds, an arc distance of 400.44 feet to a point; thence southeasterly along the projection southerly of the last described radius line on an assumed bearing of south 22 degrees, 47 minutes, 48 seconds East, a distance of 110 feet to a point; thence southeasterly on a bearing of south 61 degrees, 18 minutes, 58 seconds East, a distance of 62.703 feet to a point; thence southeasterly on a bearing of south 25 degrees, 33 minutes, 36 seconds East, a distance of 110 feet to a point; thence easterly along a circular curve to the left, which radius is 920 feet, delta of 00 degrees, 47 minutes, 34 seconds, an arc distance of 12.74 feet to a point; thence southeasterly on a bearing of south 26 degrees, 21 minutes, 10 seconds East, a distance of 110 feet to a point; thence southeasterly on a bearing of south 59 degrees, 11 minutes, 02 seconds East, a distance of 58.98 feet to a point; thence southeasterly on a bearing of south 28 degrees, 02 minutes, 54 seconds East, a distance of 110 feet to a point; thence easterly along a circular curve to the left, which radius is 1190 feet, delta 00 degrees, 18 minutes, 34 seconds, an arc distance of 6.42 feet to a point; thence southeasterly on a bearing of south 28 degrees, 21 minutes, 28 seconds East, a distance of 110 feet to a point; thence southeasterly on a bearing of south 59 degrees, 12 minutes, 00 seconds East, a distance of 53.71 feet to a point; thence southeasterly on a bearing of south 29 degrees, 12 minutes, 21 seconds East, a distance of 110 feet to a point; thence westerly along a circular curve to the right which radius is 1460 feet, delta of 00 degrees, 00 minutes, 27 seconds, an arc distance of 0.19 feet to a point; thence southeasterly on a bearing of south 29 degrees, 11 minutes, 54 seconds East, a distance of 110 feet to a point; thence southeasterly on a bearing of south 29 degrees, 02 minutes, 54 seconds East, a distance of 54.10 feet to a point; thence southeasterly on a bearing of south 30 degrees, 35 minutes, 00 seconds East, a distance of 110 feet to a point; thence westerly along a circular curve to the right, which radius is 2000 feet, delta of 00 degrees, 20 minutes, 56 seconds, an arc distance of 12.18 feet to a point; thence southeasterly on a bearing of south 30 degrees, 14 minutes, 04 seconds East, a distance of 110.01 feet to a point; thence southerly on a bearing of south 00 degrees, 16 minutes, 07 seconds West, a distance of 57.80 feet to a point; thence southerly on a bearing of south 00 degrees, 34 minutes, 08 seconds West, a distance of 556.73 feet to a point; thence easterly at right angles to the preceding line, and along the South boundary line of said Section 23, on a bearing of south 89 degrees, 25 minutes, 52 seconds East, a distance of 170 feet to a point; thence northerly on a bearing of north 00 degrees, 34 minutes, 08 seconds East, a distance of 600 feet to a point; thence East on a bearing of south 89 degrees, 25 minutes, 52 seconds East, a distance of 860 feet more or less to the waters of the North Fork (prong) of Loxahatchee River; thence meander the westerly shore of the waters of the North Fork (prong) of Loxahatchee River to the point of Beginning; said lands situate, lying and being in Martin County, Florida.

SURVEYOR'S CERTIFICATE

STATE OF FLORIDA } ss I hereby certify that the attached
COUNTY OF MARTIN } plat is a true and correct representation of a survey made under my direction and that said survey was accurate to the best of my knowledge and belief, and that permanent reference monuments were placed as prescribed by law.

Richard B. Wiggins
NOTARY PUBLIC
MY COMMISSION EXPIRES: SEPTEMBER 30, 1965.

Walter A. McElfresh
WALTER A. MCFRESH,
REG. LAND SURVEYOR No. 69
STATE OF FLORIDA

BROWARD ENGINEERS AND SURVEYORS
JUPITER-TEQUESTA HUNT CLUB COLONY SEC. B