

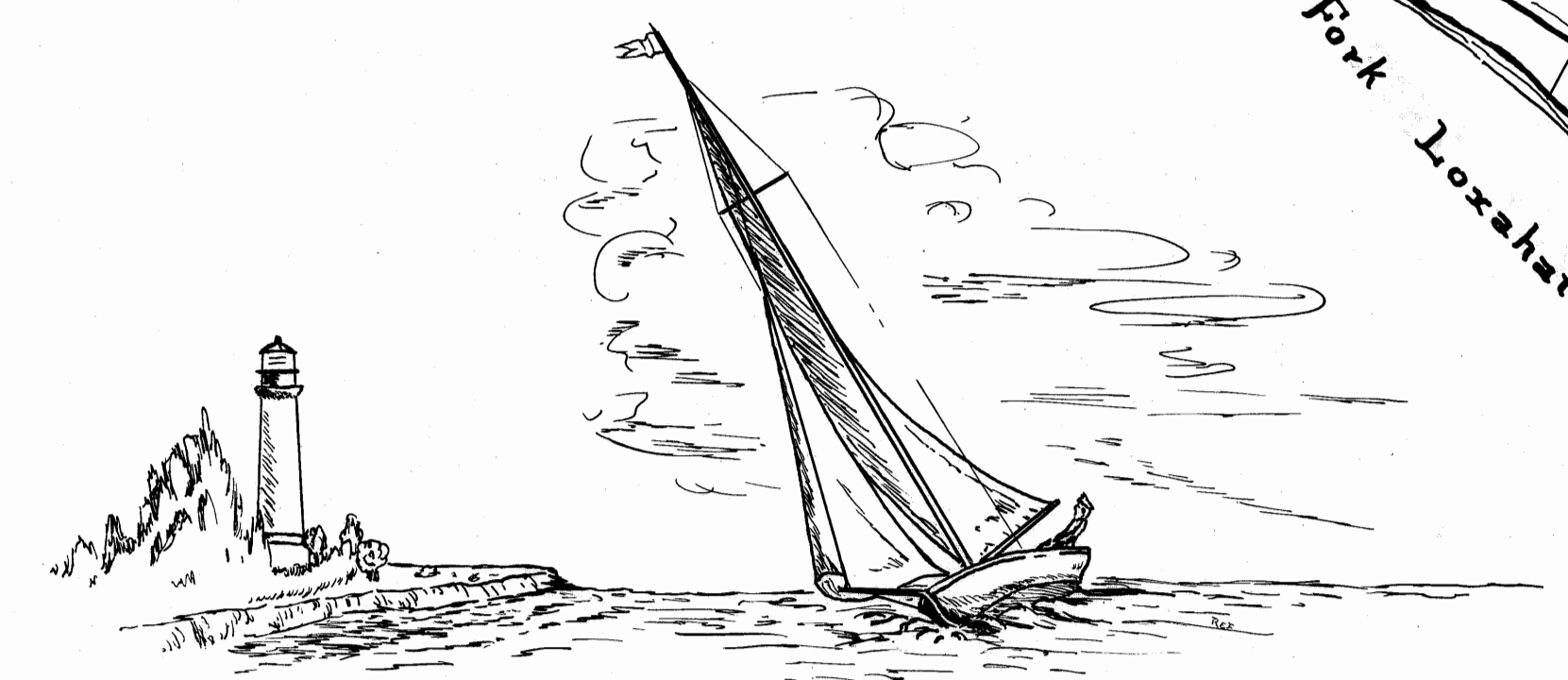
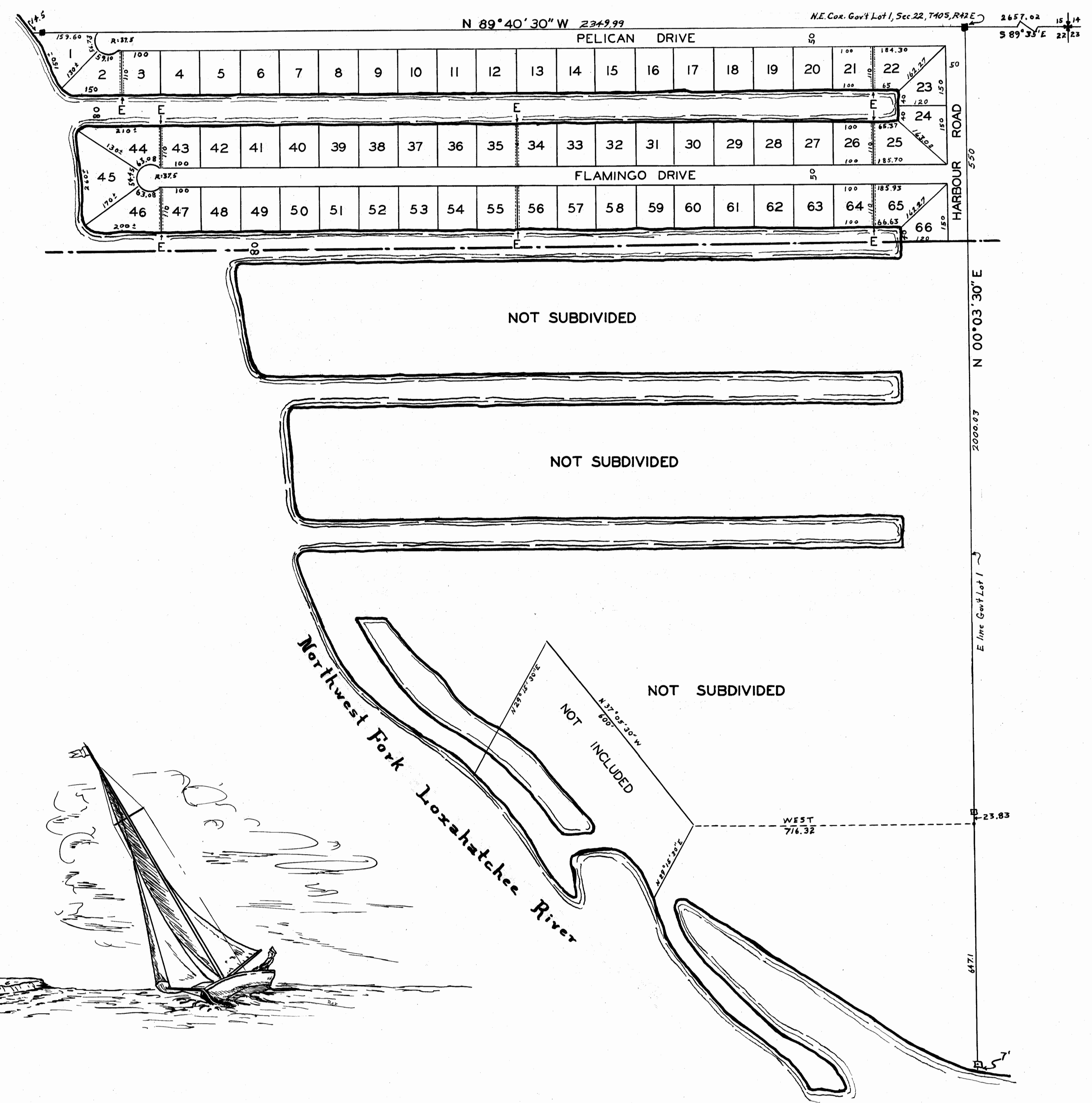
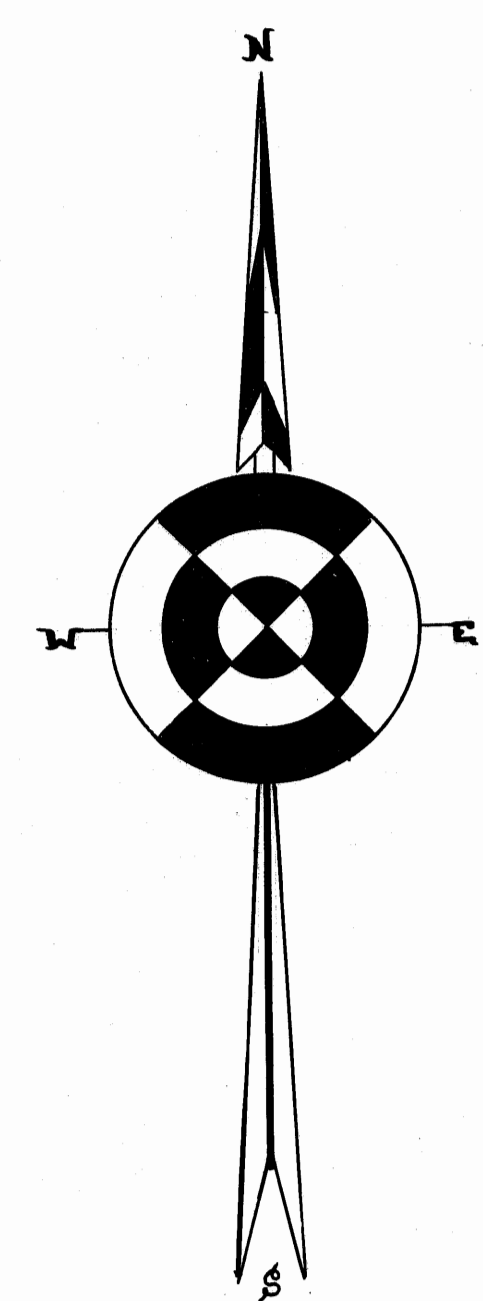
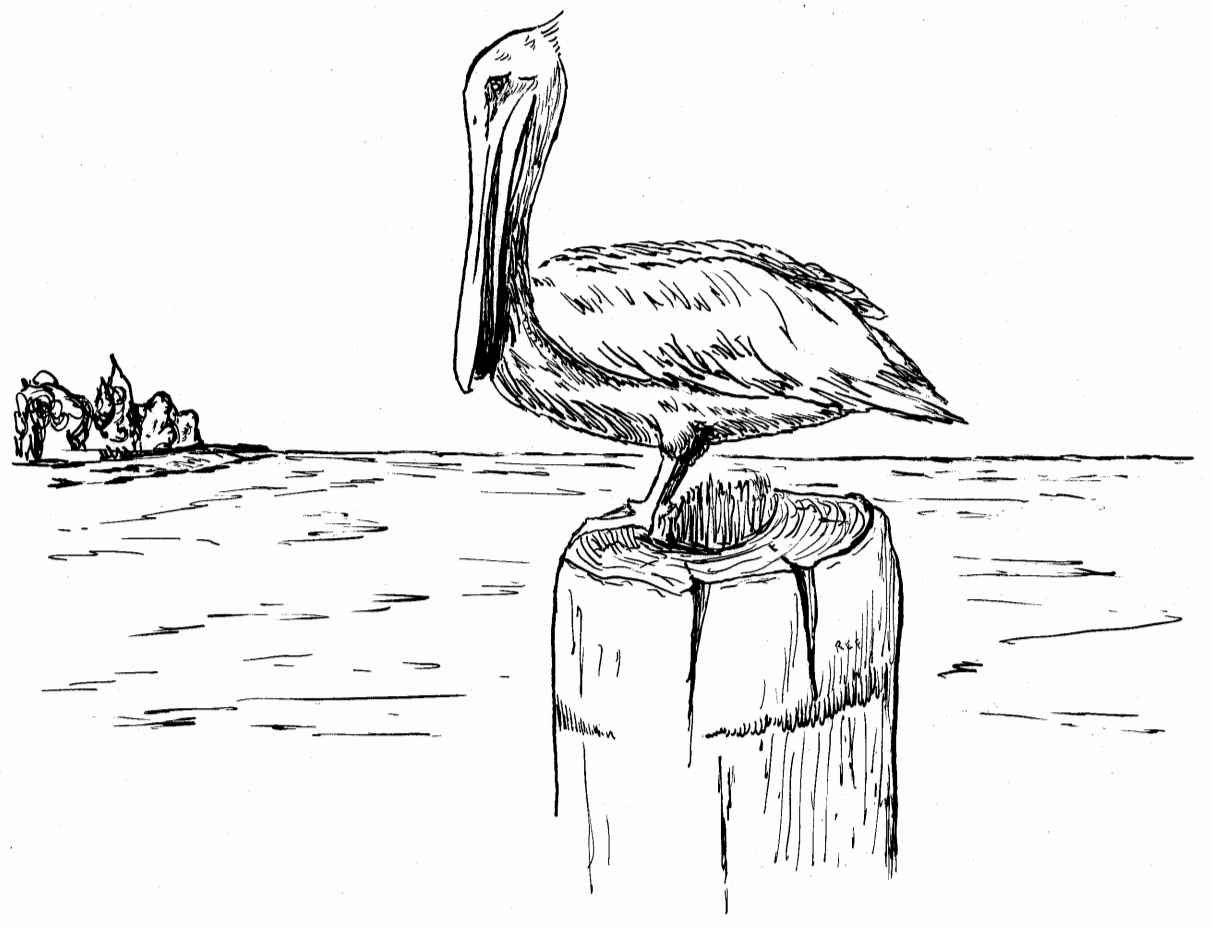
FILED & RECORDED
JUN 24 PM 1:31
GORDY PIERCE, CLERK

THIS PLAT FILED FOR RECORD
THIS 24th DAY OF JUNE, A.D.,
1958, AND RECORDED IN PLAT
BOOK 3, PAGE 98, IN THE
OFFICE OF THE CLERK OF THE
CIRCUIT COURT.
CLERK OF THE CIRCUIT COURT;
Gordy Pierce
FILE NO 6360

HARBOUR ISLES

THE NORTH 550 FEET OF GOV'T LOT 1, SEC 22, TWP 40 SOUTH, RGE 42 EAST,
MARTIN COUNTY, FLORIDA.

SCALE 1"=200'



DEDICATION

STATE OF FLORIDA SS
COUNTY OF MARTIN

KNOW ALL MEN BY THESE PRESENTS, THAT SUTHERLAND JUPITER INC., A CORPORATION ORGANIZED AND EXISTING UNDER THE LAWS OF THE STATE OF FLORIDA, OWNERS OF THE TRACT OF LAND SHOWN HEREON, HAS CAUSED THE ATTACHED PLAT TO BE MADE AND THE LAND TO BE SUBDIVIDED AS INDICATED ON THIS PLAT AND DOES HEREBY DEDICATE TO THE PERPETUAL USE OF THE PUBLIC, THE ROADS SHOWN HEREON; RESERVING HOWEVER, UNTO ITSELF, ITS LEGAL REPRESENTATIVES, OR ASSIGNS, THE REVERSION, OR REVERSIONS, THEREOF, WHENEVER ABANDONED, BY DEED STIPULATIONS VIOLATED, OR DISCONTINUED BY LAW. IN WITNESS WHEREOF IT HAS CAUSED THESE PRESENTS TO BE SIGNED BY IT'S PRESIDENT AND IT'S CORPORATE SEAL TO BE AFFIXED AND ATTESTED BY IT'S SECRETARY THIS 7th DAY OF February, A.D., 1958

SUTHERLAND JUPITER INC.
Harry M. Lorbach
PRESIDENT

ATTEST *Truman F. Connell*
SECRETARY

ACKNOWLEDGEMENT

STATE OF FLORIDA SS
COUNTY OF Palm Beach

BEFORE ME THIS DAY PERSONALLY APPEARED HARRY M. LORBACH AND TRUMAN F. CONNELL, PRESIDENT AND SECRETARY, RESPECTIVELY, OF SUTHERLAND JUPITER INC. AND ACKNOWLEDGED THAT THEY EXECUTED THE DEDICATION, SHOWN HEREON, FOR THE USES, AND PURPOSES, THEREIN STATED, ON BEHALF OF THE SAID CORPORATION.

WITNESS MY HAND AND OFFICIAL SEAL THIS 7th DAY February, A.D., 1958
W. W. [Signature]
NOTARY PUBLIC

MY COMMISSION EXPIRES January 21, 1961

CERTIFICATE

STATE OF FLORIDA SS
COUNTY OF MARTIN

I HEREBY CERTIFY THAT THE PLAT SHOWN HEREON WAS SURVEYED AND PLATTED UNDER MY DIRECTION AND THAT THE ATTACHED PLAT IS A TRUE AND CORRECT REPRESENTATION THEREOF, TO THE BEST OF MY KNOWLEDGE AND BELIEF, AND THAT PERMANENT REFERENCE MONUMENTS WERE PLACED AS PRESCRIBED BY LAW.

James E. Brock
REGISTERED LAND SURVEYOR
FLORIDA CERTIFICATE NO 4282

SUBSCRIBED AND SWORN TO BEFORE ME THIS 24th DAY OF June, A.D., 1958, AT Stuart, FLORIDA.

Bettie Zarnits
NOTARY PUBLIC

MY COMMISSION EXPIRES 7/6/60

APPROVED June 24, 1958

BOARD OF COUNTY COMMISSIONERS
Ray V. [Signature]
CHAIRMAN

NOTE:
"E" DENOTES 5' DRAINAGE EASEMENT EACH SIDE OF P/L.

STAFFORD & BROCK
ENGINEERS
SURVEYORS

STUART FLORIDA

DRAWN BY *Randall E. Fisher* FILE NO 10-3