

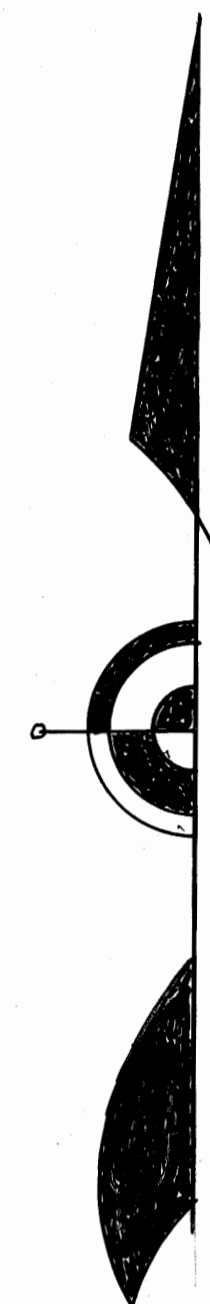
# REVISED PLAT OF NEW MONROVIA

A SUBDIVISION OF GOV'T LOT 5, SEC., 25, T 38 S, R 41 E, & THAT PART OF GOV'T LOT 4, SEC., 30, T 38 S, R 42 E, LYING WEST OF THE FLORIDA EAST COAST RAILROAD R/W.

MARTIN COUNTY, FLORIDA.

SCALE 1" = 200'

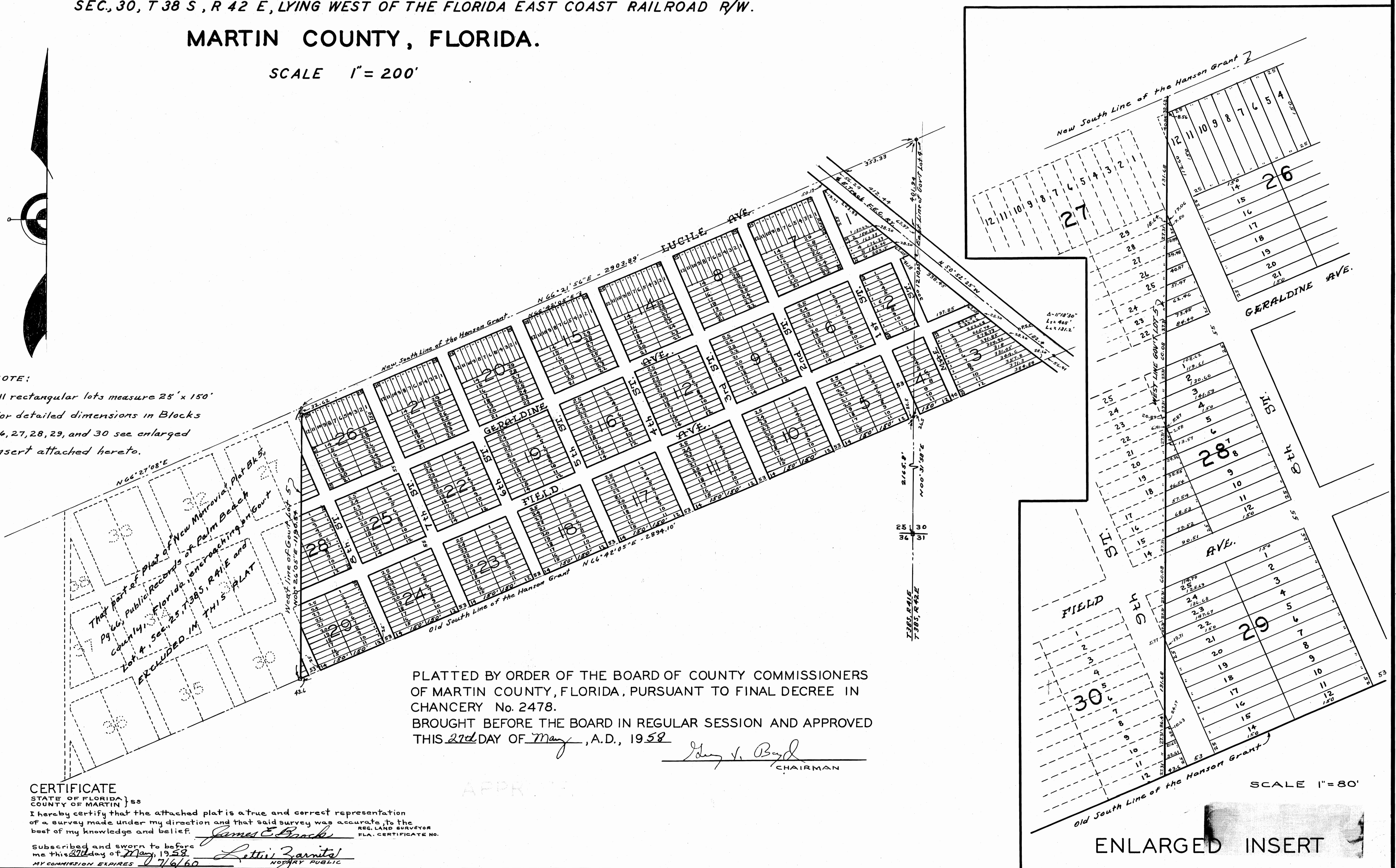
This plat filed for record at  
2:00 PM this 27th day of May, 1958  
and duly recorded in Plat Bk. 3,  
Pg. 74 in the Office of the  
Clerk of the Circuit Court  
of Martin County, Florida  
Clerk of the Circuit Court  
*Growth Pierce*  
File No. 63181



**NOTE:**

All rectangular lots measure 25' x 150'  
For detailed dimensions in Blocks  
26, 27, 28, 29, and 30 see enlarged  
insert attached hereto.

That part of Plat of New Monrovia, Plat Bk. 5,  
Pg. 66, Public Records of Palm Beach  
County, Florida, encroaching on Gov't  
Lot 4, Sec. 25, T 38 S, R 41 E and  
EXCLUDED IN THIS PLAT

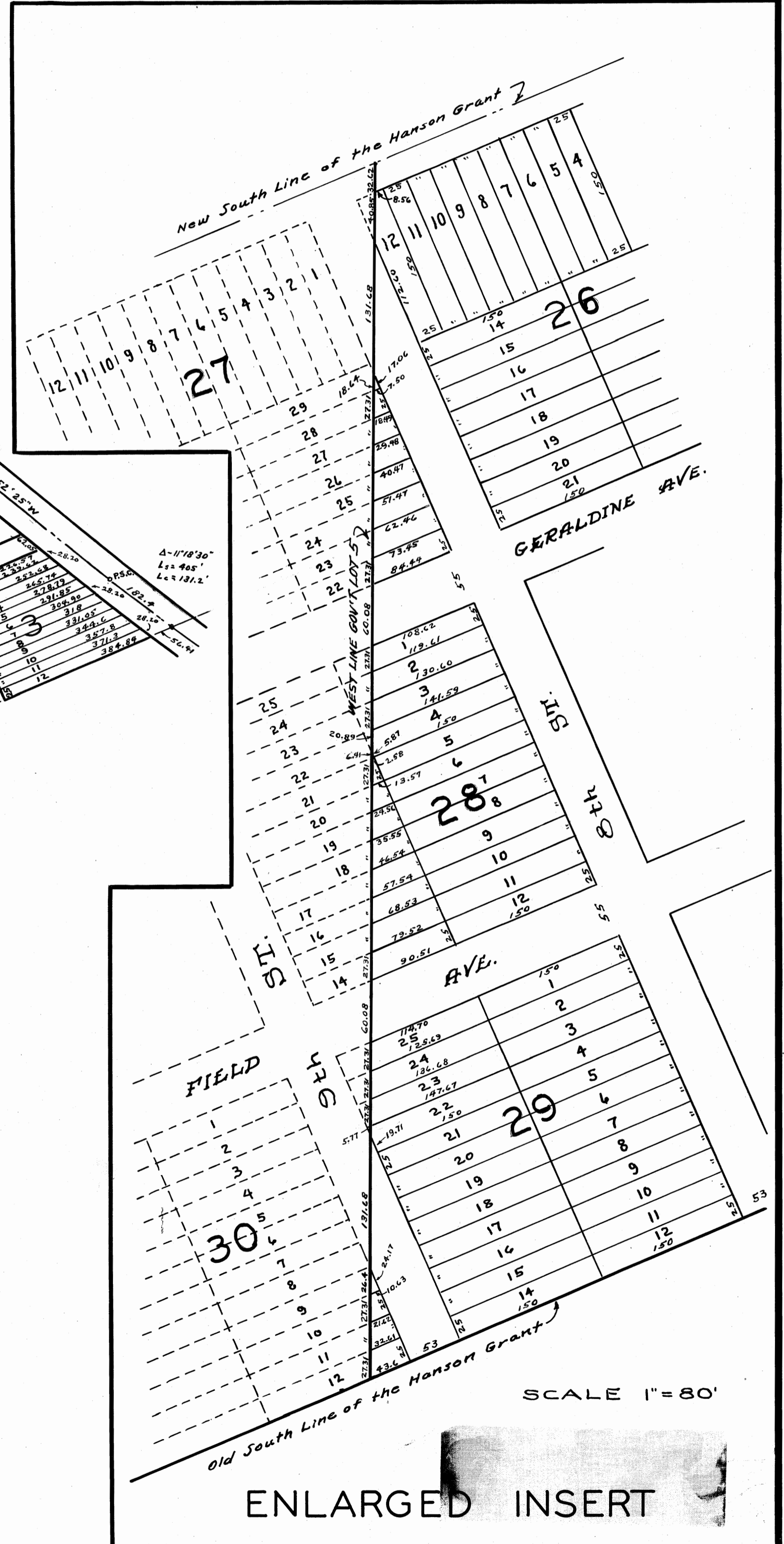


PLATTED BY ORDER OF THE BOARD OF COUNTY COMMISSIONERS  
OF MARTIN COUNTY, FLORIDA, PURSUANT TO FINAL DECREE IN  
CHANCERY No. 2478.  
BROUGHT BEFORE THE BOARD IN REGULAR SESSION AND APPROVED  
THIS 27th DAY OF May, A.D., 1958

*Henry V. Boyd*  
CHAIRMAN

**CERTIFICATE**

STATE OF FLORIDA )  
COUNTY OF MARTIN ) ss  
I hereby certify that the attached plat is a true and correct representation  
of a survey made under my direction and that said survey was accurate to the  
best of my knowledge and belief.  
*James E. Bracke*  
REG. LAND SURVEYOR  
FLA. CERTIFICATE NO. \_\_\_\_\_  
Subscribed and sworn to before  
me this 27th day of May, 1958  
MY COMMISSION EXPIRES 7/6/60  
*Letitia Zarnita*  
NOTARY PUBLIC



ENLARGED INSERT