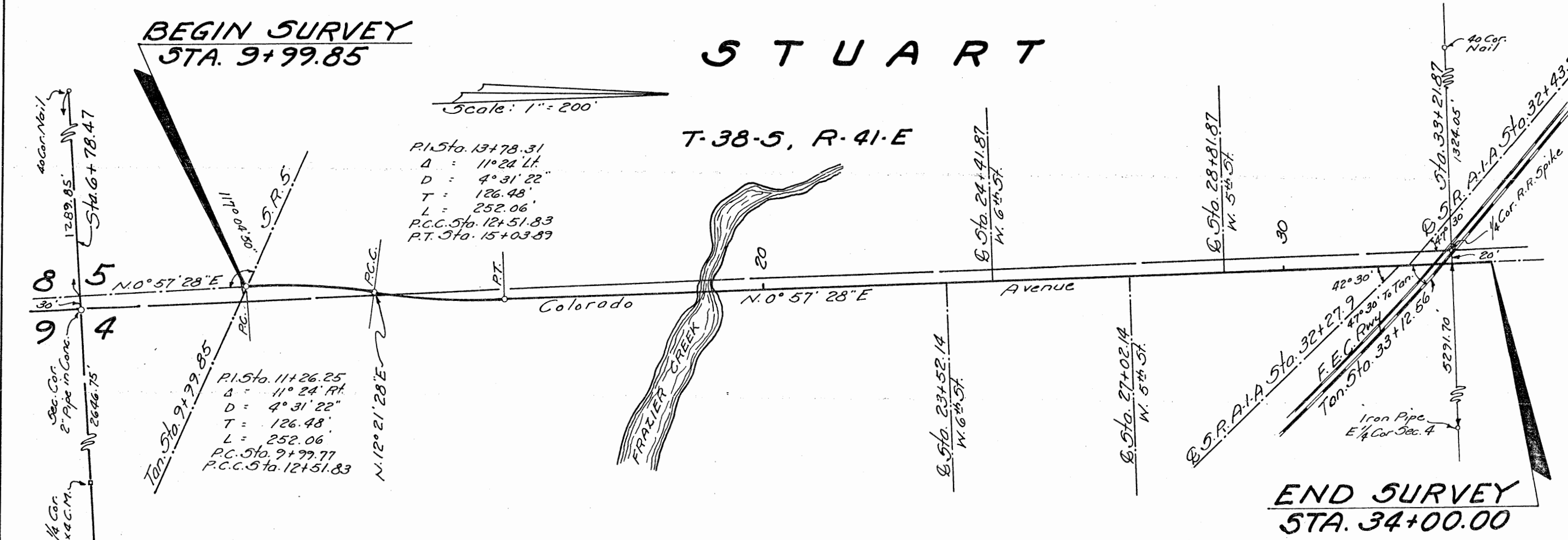


44725



Filed for record in the Office
of the Clerk of Circuit Court for
the County of Martin, State of
Florida in Map Book 3 Page 7
on the 10th day of June, 1954

Dorothy Pierce
Clerk of Circuit Court
Martin County, Florida

We, Cecil M. Webb, as Chairman of the State Road Department of the State of Florida, and L. A. Froeligh, as Acting Secretary of the State Road Department of the State of Florida, do hereby certify that this map is the Official Map of Location and Survey of a portion of Section 8706, designated as a part of State Road 76 in Martin County, Florida; said portion of Section 8706, extending from State Road 15, Northerly along Colorado Avenue in Stuart, to State Road A-1-A and Florida East Coast Railway Crossing.

Prepared and adopted by the State Road Department of the State of Florida under provisions of Section 341.47, Florida Statutes of 1941.

Letitia J. Smith

Cecil M. Webb
Chairman State Road Department

L. A. Froeligh
Acting Secretary State Road Department

R. J. Hopton
Acting State Highway Engineer

Date: April 28, 1954

Sec. 8706, Rd. 76, Martin County