

STAFFORD BROCK
CIVIL ENGINEERING
LAND SURVEYING
STUART, FLORIDA.

REGISTERED
COUNTY, FLA.
MAR 26 1953
RR Bishop

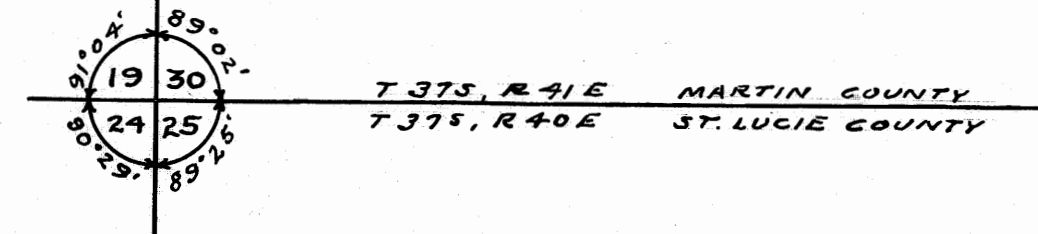
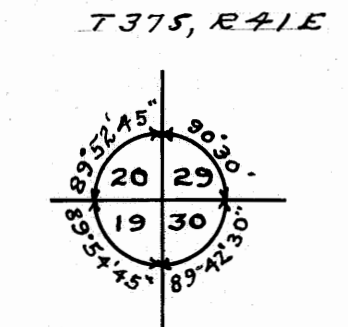
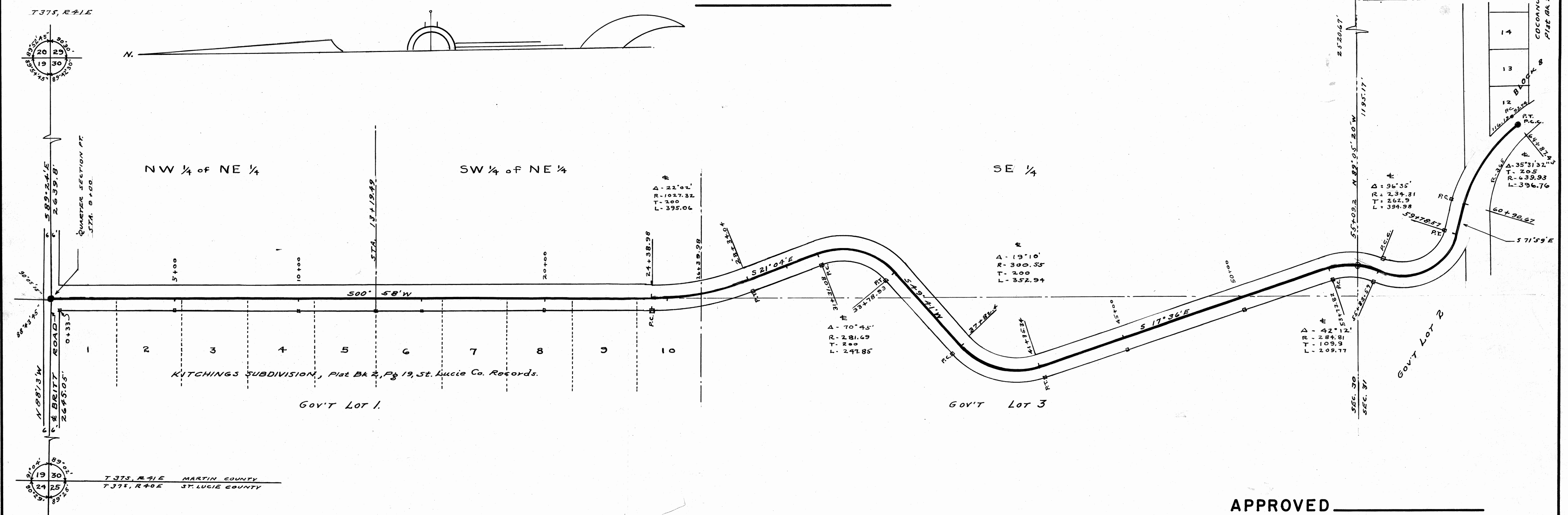
This Plat filed for record
this 26th day of March, 1953
in Plat Book 2, Page 92
at Stuart, Martin County, Fla.
CLERK OF CIRCUIT COURT
Dorothy Pierce
FILE NO. 41046 by: RR Bishop, DC

NORTH FORK DRIVE

MARTIN COUNTY

RIGHT-OF-WAY MAP

SCALE 1" = 200'



NOTE:
Bearings refer to the true meridian.
□ = symbol for permanent reference monument.
Stationing and curve data refer to road center-line.

CERTIFICATION
STATE OF FLORIDA
COUNTY OF MARTIN SS

I HEREBY CERTIFY: that the survey of Road Right-of-way, shown hereon, was made, and platted, under my direction; and that this plat is a true, and correct representation thereof, to the best of my knowledge, and belief; and that permanent reference monuments were placed, as prescribed by law.

James E. Brock
COUNTY SURVEYOR
REGISTERED LAND SURVEYOR
FLORIDA CERTIFICATE
No. 688

Subscribed and sworn to, before me,
this 25th day of Mar, 1953 A.D.,
at Stuart, Florida.

Dorothy Pierce
DOROTHY PIERCE
Clerk of Circuit Court
MARTIN COUNTY
Stuart, Florida
NOTARY PUBLIC
COMMISSION EXPIRES _____

APPROVED _____
BOARD OF COUNTY COMMISSIONERS

Arnold M. Bauer
CHAIRMAN OF THE BOARD