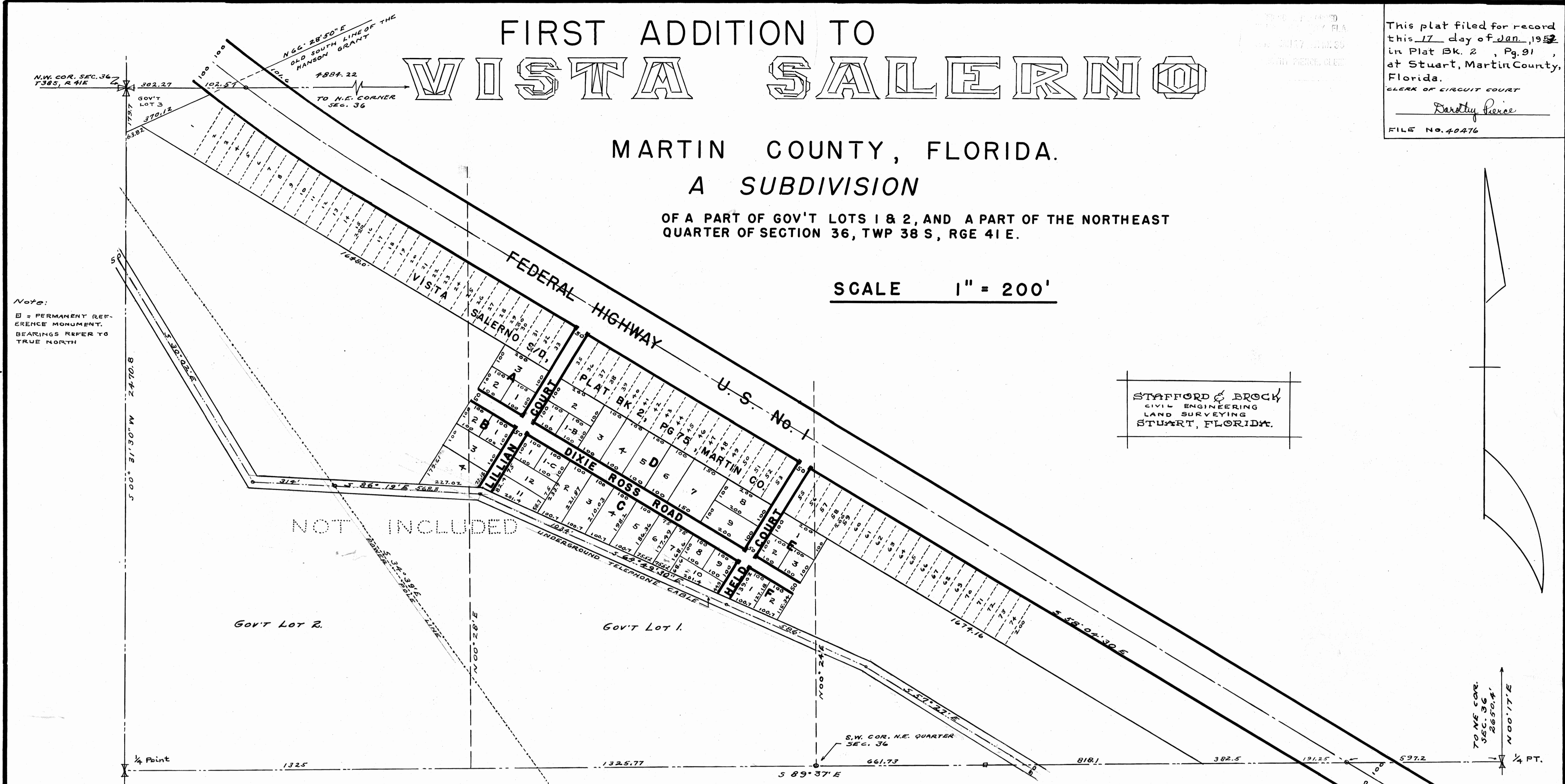


FIRST ADDITION TO VISTA SALERNO

MARTIN COUNTY, FLORIDA. A SUBDIVISION

OF A PART OF GOV'T LOTS 1 & 2, AND A PART OF THE NORTHEAST QUARTER OF SECTION 36, TWP 38 S, RGE 41 E.

SCALE 1" = 200'



Note:
□ = PERMANENT REFERENCE MONUMENT.
BEARINGS REFER TO TRUE NORTH

STAFFORD & BROCK
CIVIL ENGINEERING
LAND SURVEYING
STUART, FLORIDA.

This plat filed for record this 17 day of Jan, 1953 in Plat Bk. 2, Pg. 91, at Stuart, Martin County, Florida.
Clerk of Circuit Court
Dorothy Pierce
FILE NO. 40476

DEDICATION

STATE OF FLORIDA } SS
COUNTY OF MARTIN }

Know all men by these presents, that Ross T. Hulslander and Lillian H. Hulslander, his wife, owners of the tract of land shown hereon as FIRST ADDITION TO VISTA SALERNO, have caused this land to be surveyed and subdivided as shown hereon, and do hereby dedicate, to the perpetual use of the public, the roads shown hereon.

In witness whereof we have hereto set our hand and seal, this 14 day of January, 1953

Ross T. Hulslander SEAL
Lillian H. Hulslander SEAL

Dorothy M. Hardie WITNESS
William R. Hardie WITNESS

ACKNOWLEDGEMENT

STATE OF Florida } SS
COUNTY OF Dade }

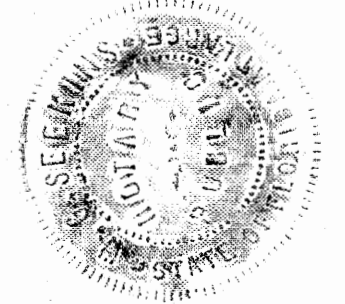
Before me this day personally appeared Ross T. Hulslander and Lillian H. Hulslander, well known to me to be the persons who executed the foregoing instrument and acknowledge to and before me that they executed the same for the uses and purposes expressed and or indicated hereon.

Witness my hand and official seal at Miami, Dade county,

This 14 day of January, 1953
W. B. Seecins

NOTARY PUBLIC
MY COMMISSION EXPIRES November 26, 1954

APPROVED Jan. 16, 1953
Board of
County Commissioners
By: James E. Brock
COUNTY SURVEYOR



CERTIFICATE

STATE OF FLORIDA } SS
COUNTY OF MARTIN }

I hereby certify that the tract of land, shown hereon, was surveyed and platted under my direction and that this plat is a true and correct representation thereof, to the best of my knowledge and belief; and that permanent reference monuments were placed as required by law.

Fred A. Stafford
FRED A. STAFFORD
REGISTERED LAND SURVEYOR No. 443

Subscribed and sworn to before me this 17 day of Jan, 1953 at Stuart, Florida.

Dorothy Pierce
Clerk of Circuit Court NOTARY PUBLIC
MY COMMISSION EXPIRES _____

