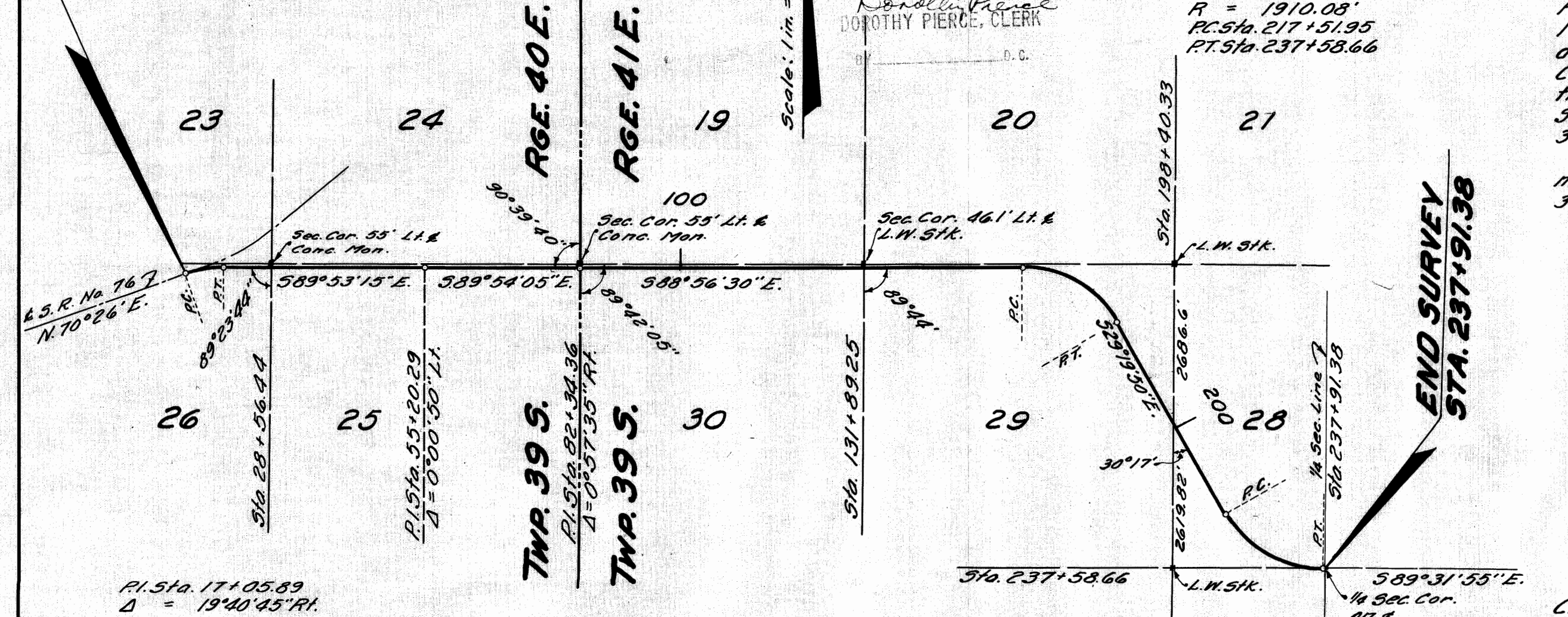


38906

2-19

BEGIN SURVEY
STA. 13+74.60

END SURVEY
STA. 237+91.38



FILED & RECORDED
IN MARTIN COUNTY, FLA.
1952 JUN 24 PM 3:37
Dorothy Pierce
DOROTHY PIERCE, CLERK
D.C.

PI Sta. 228+59.22
Δ = 60°12'05" LT
D = 3'00"
T = 1107.27'
L = 2006.71'
R = 1910.08'
PC Sta. 217+51.95
PT Sta. 237+58.66

PI Sta. 17+05.89
Δ = 19°40'45" RT
D = 3'00"
T = 331.29'
L = 655.91'
R = 1910.08'
PC Sta. 13+74.60
PT Sta. 20+30.57

PI Sta. 170+10.00
Δ = 59°36'40" RT
D = 3'00"
T = 1097.79'
L = 1992.50'
R = 1910.08'
PC Sta. 159+12.21
PT Sta. 179+04.71

We, Alfred A. McKethan, as Chairman of the State Road Department of the State of Florida and R.M. Hartsfield, as Secretary of the State Road Department of the State of Florida, do hereby certify that this map is the Official Map of Location and Survey of a portion of Section 8951, designated as a part of State Road 5-708 in Martin County, Florida. Said portion of Section 8951 extending from State Road 76, Easterly and Southeasterly to Southeast corner of Southwest 1/4 of Section 28, Township 39 South, Range 41 East.
Prepared and adopted by the State Road Department of the State of Florida under provisions of Section 341.47, Florida Statutes of 1941.

Alfred A. McKethan
Chairman State Road Department

R.M. Hartsfield
Secretary State Road Department

Approved: *Alvin Hill*
State Highway Engineer

Filed for Record in the Office of the Clerk of the Circuit Court for the County of Martin, State of Florida in Map Book 2 Page 79 on the 24 day of June A.D. 1952.

Dorothy Pierce
Clerk of the Circuit Court
Martin County, Florida

Sec. 8951 - Rd. 5-708 - Martin County

Date: June 13, 1952