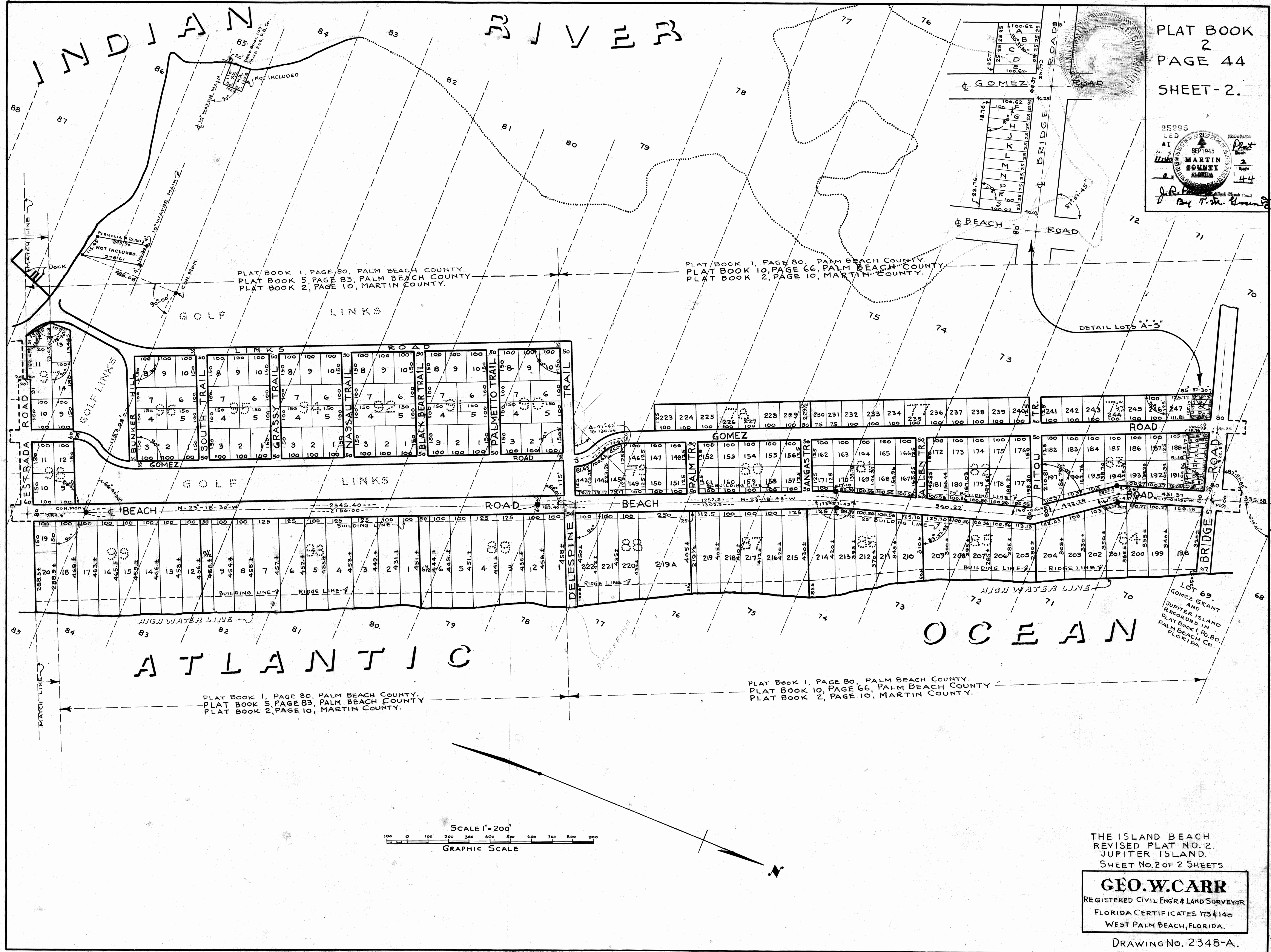


PLAT 2-44

PLAT BOOK
2
PAGE 44
SHEET-2.

25295
LED
AT
SEP 1945
MARTIN
COUNTY
FLORIDA
By T.M. Ground

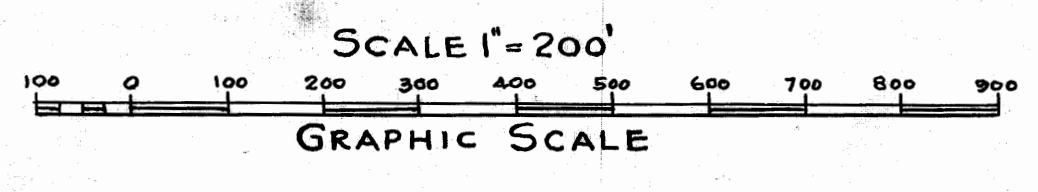


PLAT BOOK 1, PAGE 80, PALM BEACH COUNTY.
PLAT BOOK 5, PAGE 83, PALM BEACH COUNTY.
PLAT BOOK 2, PAGE 10, MARTIN COUNTY.

PLAT BOOK 1, PAGE 80, PALM BEACH COUNTY.
PLAT BOOK 10, PAGE 66, PALM BEACH COUNTY.
PLAT BOOK 2, PAGE 10, MARTIN COUNTY.

PLAT BOOK 1, PAGE 80, PALM BEACH COUNTY.
PLAT BOOK 5, PAGE 83, PALM BEACH COUNTY.
PLAT BOOK 2, PAGE 10, MARTIN COUNTY.

PLAT BOOK 1, PAGE 80, PALM BEACH COUNTY.
PLAT BOOK 10, PAGE 66, PALM BEACH COUNTY.
PLAT BOOK 2, PAGE 10, MARTIN COUNTY.



THE ISLAND BEACH
REVISED PLAT NO. 2.
JUPITER ISLAND.
SHEET No. 2 of 2 SHEETS.
GEO. W. CARR
REGISTERED CIVIL ENGR & LAND SURVEYOR
FLORIDA CERTIFICATES 173 & 140
WEST PALM BEACH, FLORIDA.
DRAWING No. 2348-A.