

ENGINEER'S CERTIFICATE
STATE OF FLORIDA
COUNTY OF MARTIN

WE HEREBY CERTIFY that this plat is made from an actual survey made under our supervision, that it is a correct representation of the land platted and that permanent reference monuments have been placed as called for under Section Seven of Chapter 10275 of the Laws of the State of Florida.

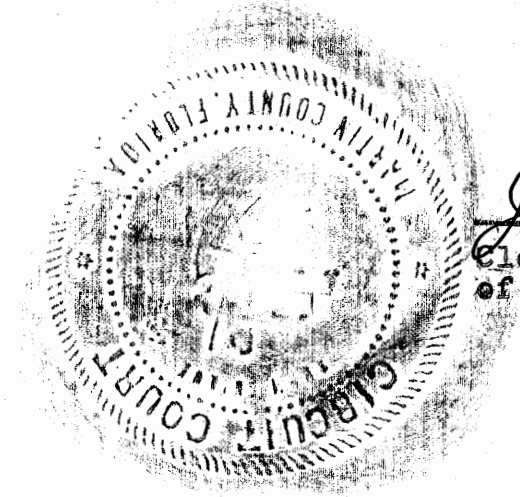
Dated this 7th day of May 1945

By Edmer Robb Surveyor
Fla. Cert #147

Note: All P.R.Ms. are Terra Cotta Tile filled with concrete and were set previous to my survey
Edmer Robb

CERTIFICATE OF CLERK OF CIRCUIT COURT
STATE OF FLORIDA
COUNTY OF MARTIN

I, Clerk of Circuit Court of Martin County, Florida, do hereby certify that I have examined the Plat of Addition to Jensen Beach Home Site S/D and that it complies in form with all the requirements of Chapter 10275 of the laws of Florida. This Plat filed for record on 15th day of May 1945 and recorded on page 42 of Plat Book 2 in the office of the Clerk of the Clerk of Circuit Court of Martin County, Florida



J.B. Pomeroy
Clerk of Circuit Court of Martin County, Fla.
PALMERS ADDITION TO
JENSEN BEACH HOME SITE S/D.
Comprising the South 774.94' of that part of Secs. 22nd, 23 T. 37 S. R. 41. E. lying East of State Road #140
1" = 100' April 30 1945
Edmer Robb Surveyor
Reg # 147

CERTIFICATE OF DEDICATION
STATE OF FLORIDA
COUNTY OF MARTIN

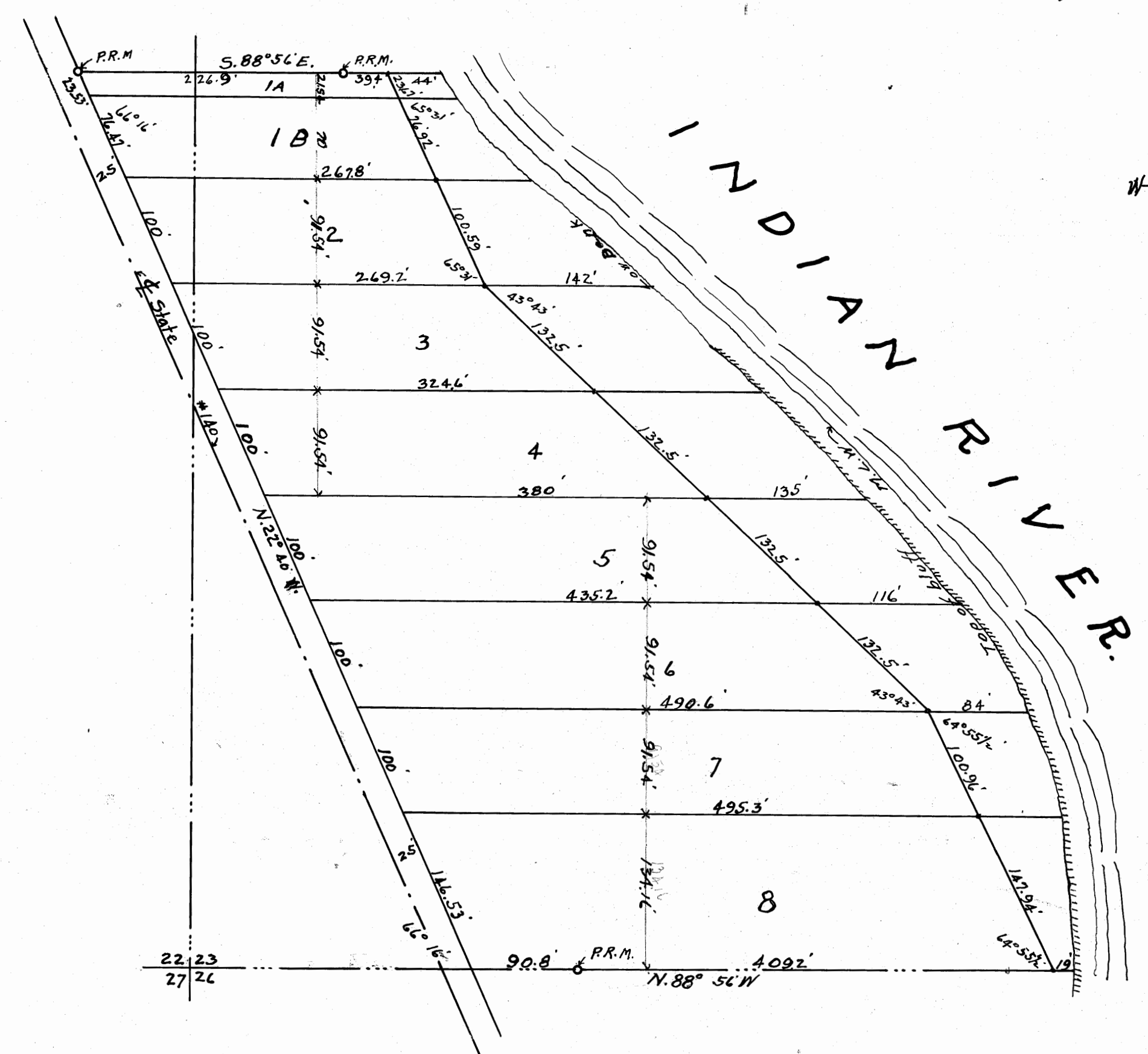
THIS IS TO CERTIFY that the lands as shown on this Plat are the property of W.A. Palmer and Louise Palmer who hereby dedicate to the public forever all streets, alleys and parks as shown thereon.

GIVEN under our hands and seals, this day of 15th May 1945

W.A. Palmer
Louise Palmer
W.A. Palmer
Louise Palmer
W.A. Harrison
Louise Harrison

STATE OF FLORIDA
COUNTY OF MARTIN
ON this day personally appeared before me, an officer authorized to take acknowledgements of deeds, etc.
W.A. Palmer and Louise Palmer

to me well known and known to be the persons who executed the within Dedication, and acknowledged that they executed same for the purposes therein expressed, and the said Louise Palmer wife of the said W.A. Palmer upon an examination taken by me separately and apart from her said husband, acknowledged that she executed



the said dedication freely and voluntarily and without any constraint, compulsion, apprehension or fear of or from her said husband.
WITNESS my hand and seal this 15th day of May 1945
O.B. Alving
Notary Public

CERTIFICATE OF APPROVAL
THIS IS TO CERTIFY that this Plat is hereby approved by
A.A. Hendry, Jr.
the accredited representative of the Board of County Commissioners of Martin County of Florida.
Dated 15th day of May 1945
A.A. Hendry, Jr.
County Engineer