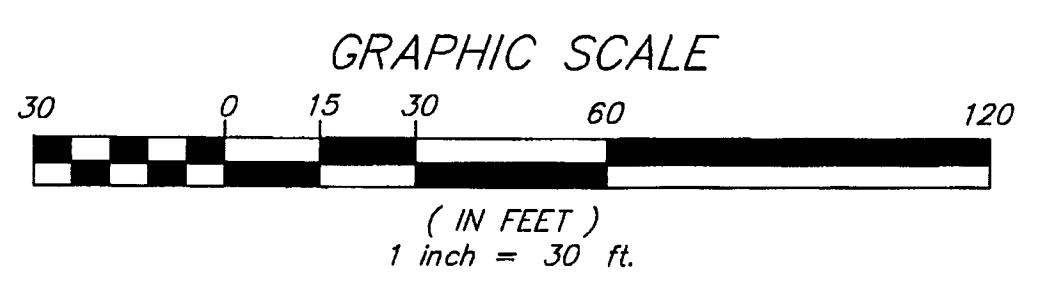
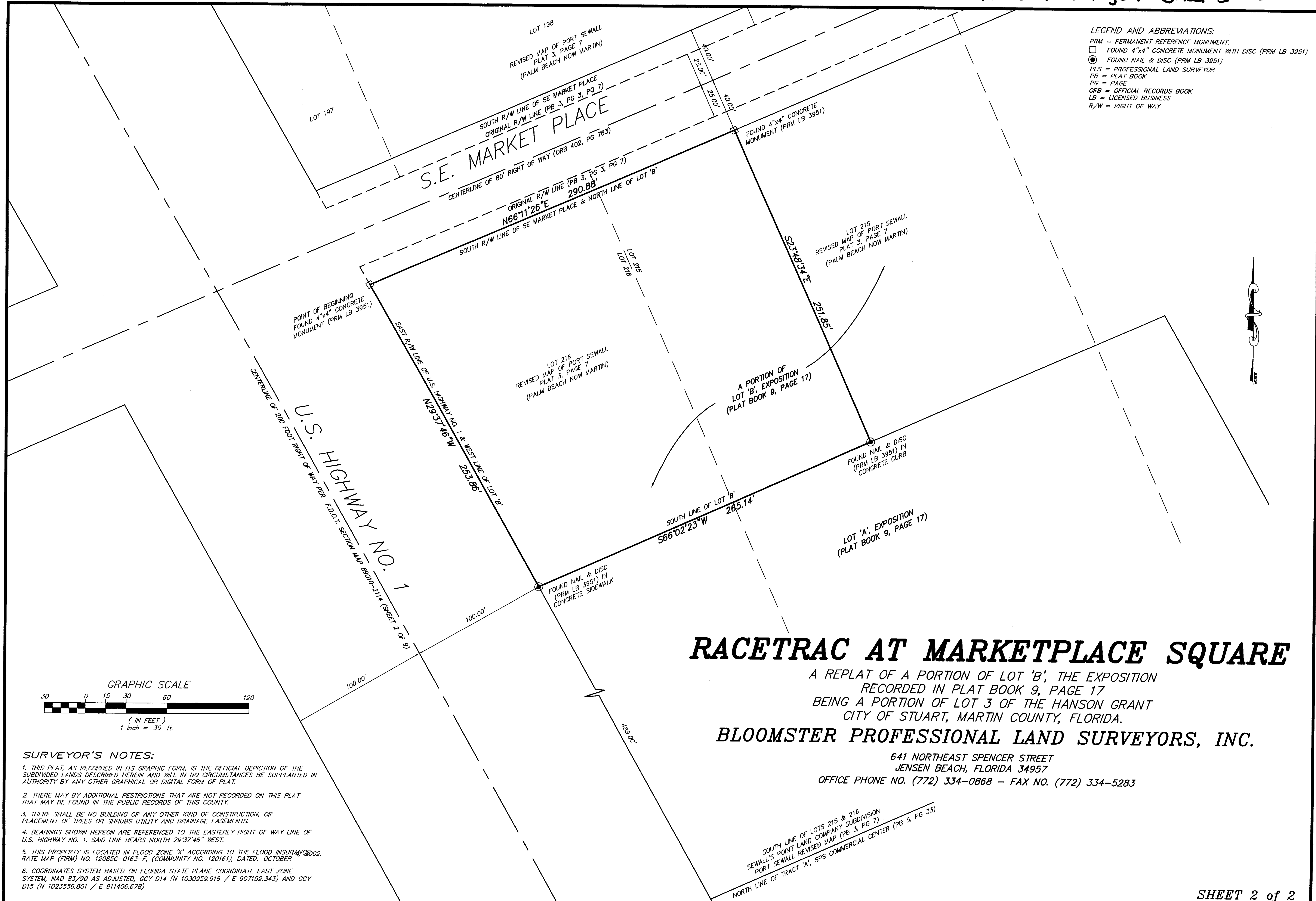


LEGEND AND ABBREVIATIONS:
 PRM = PERMANENT REFERENCE MONUMENT,
 □ FOUND 4"x4" CONCRETE MONUMENT WITH DISC (PRM LB 3951)
 ● FOUND NAIL & DISC (PRM LB 3951)
 PLS = PROFESSIONAL LAND SURVEYOR
 PB = PLAT BOOK
 PG = PAGE
 ORB = OFFICIAL RECORDS BOOK
 LB = LICENSED BUSINESS
 R/W = RIGHT OF WAY



SURVEYOR'S NOTES:

1. THIS PLAT, AS RECORDED IN ITS GRAPHIC FORM, IS THE OFFICIAL DEPICTION OF THE SUBDIVIDED LANDS DESCRIBED HEREIN AND WILL IN NO CIRCUMSTANCES BE SUPPLANTED IN AUTHORITY BY ANY OTHER GRAPHICAL OR DIGITAL FORM OF PLAT.
2. THERE MAY BE ADDITIONAL RESTRICTIONS THAT ARE NOT RECORDED ON THIS PLAT THAT MAY BE FOUND IN THE PUBLIC RECORDS OF THIS COUNTY.
3. THERE SHALL BE NO BUILDING OR ANY OTHER KIND OF CONSTRUCTION, OR PLACEMENT OF TREES OR SHRUBS UTILITY AND DRAINAGE EASEMENTS.
4. BEARINGS SHOWN HEREON ARE REFERENCED TO THE EASTERLY RIGHT OF WAY LINE OF U.S. HIGHWAY NO. 1. SAID LINE BEARS NORTH 29°37'46" WEST.
5. THIS PROPERTY IS LOCATED IN FLOOD ZONE 'X' ACCORDING TO THE FLOOD INSURANCE RATE MAP (FIRM) NO. 12085C-0163-F, (COMMUNITY NO. 120161), DATED: OCTOBER 2002.
6. COORDINATES SYSTEM BASED ON FLORIDA STATE PLANE COORDINATE EAST ZONE SYSTEM, NAD 83/90 AS ADJUSTED, GCY D14 (N 1030959.916 / E 907152.343) AND GCY D15 (N 1023556.801 / E 911406.678)

RACETRAC AT MARKETPLACE SQUARE

A REPLAT OF A PORTION OF LOT 'B', THE EXPOSITION
 RECORDED IN PLAT BOOK 9, PAGE 17
 BEING A PORTION OF LOT 3 OF THE HANSON GRANT
 CITY OF STUART, MARTIN COUNTY, FLORIDA.

BLOOMSTER PROFESSIONAL LAND SURVEYORS, INC.

641 NORTHEAST SPENCER STREET
 JENSEN BEACH, FLORIDA 34957
 OFFICE PHONE NO. (772) 334-0868 - FAX NO. (772) 334-5283

SOUTH LINE OF LOTS 215 & 216
 SEWALL'S POINT LAND COMPANY SUBDIVISION
 PORT SEWALL REVISED MAP (PB 3, PG 7)
 NORTH LINE OF TRACT 'A', SPS COMMERCIAL CENTER (PB 5, PG 33)