

**NOTICE:**  
THIS PLAT, AS RECORDED IN ITS GRAPHIC FORM, IS THE OFFICIAL DEPICTION OF THE SUBDIVIDED LANDS DESCRIBED HEREIN AND WILL IN NO CIRCUMSTANCES BE SUPPLANTED IN AUTHORITY BY ANY OTHER GRAPHICAL OR DIGITAL FORM OF PLAT. THERE MAY BE ADDITIONAL RESTRICTIONS THAT ARE NOT RECORDED ON THIS PLAT THAT MAY BE FOUND IN THE PUBLIC RECORDS OF THIS COUNTY.

**LEGEND AND ABBREVIATIONS:**  
 □ = (PRM) PERMANENT REFERENCE MONUMENT,  
 SET 4"x4" CONCRETE MONUMENT WITH DISC (PLS 4134)  
 ● = SET #5 IRON ROD & CAP (PLS 4134)  
 ○ = PERMANENT CONTROL POINT  
 SET PK NAIL & DISC (PLS 4134)  
 PLS = PROFESSIONAL LAND SURVEYOR  
 PB = PLAT BOOK  
 PG = PAGE  
 MCR = MARTIN COUNTY RECORDS  
 FDEP DOC# = FLORIDA DEPARTMENT OF ENVIRONMENTAL PROTECTION DOCUMENT NUMBER  
 S.R. = STATE ROAD  
 L = LENGTH  
 R = RADIUS  
 D = DELTA  
 ID = IDENTIFICATION  
 PK = PARKER KALON (TYPE OF NAIL)

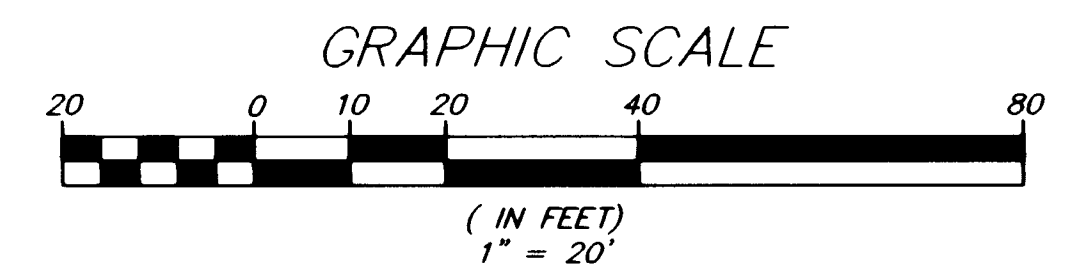
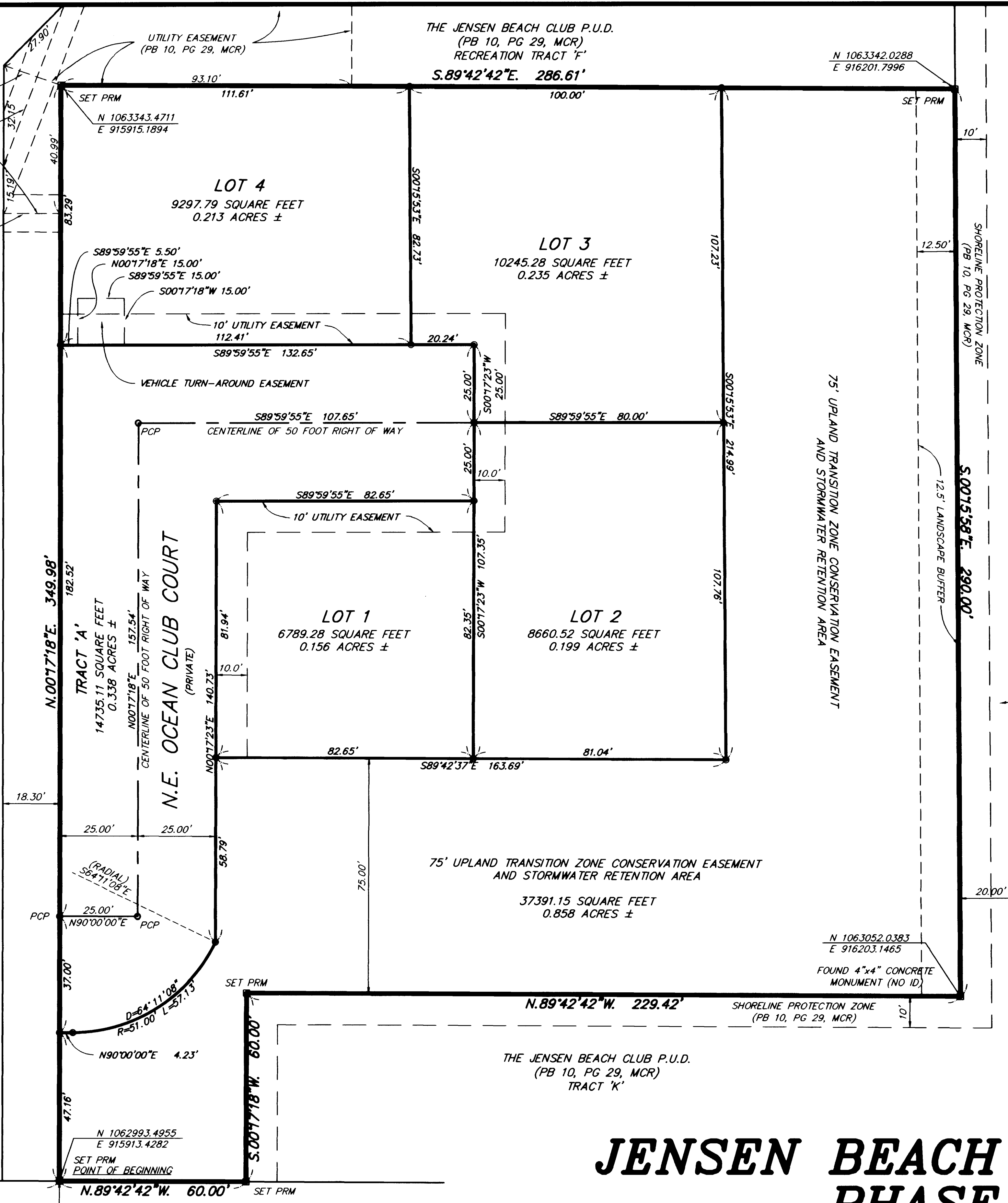
POINT OF COMMENCEMENT  
 N.W. CORNER OF SECTION 13/37/41  
 FOUND TERRA COTTA PIPE  
 FDEP DOC# 057081

(BEARING BASE)  
 S.00°08'40"E 2581.49'  
 WEST LINE OF SECTION 13-37-41

THE JENSEN BEACH CLUB P.U.D.  
 (PB 10, PG 29, MCR)  
 TRACT 'A'

NORTHERN RIGHT-OF-WAY LINE S.R. 707-A  
 S.89°42'42"E 1008.15'

N.E. CAUSEWAY BOULEVARD (S.R. 707-A)  
 CENTERLINE OF EXISTING 100 FOOT RIGHT OF WAY



# JENSEN BEACH CLUB PUD, PHASE II

BEING A PORTION OF GOVERNMENT LOT 2,  
 LYING IN SECTION 13, TOWNSHIP 37 SOUTH, RANGE 41 EAST  
 MARTIN COUNTY, FLORIDA

**BLOOMSTER PROFESSIONAL LAND SURVEYORS, INC.**

791 N.E. DIXIE HIGHWAY  
 JENSEN BEACH, FLORIDA 34957  
 OFFICE PHONE NO. (772) 334-0868 - FAX NO. (772) 334-5283