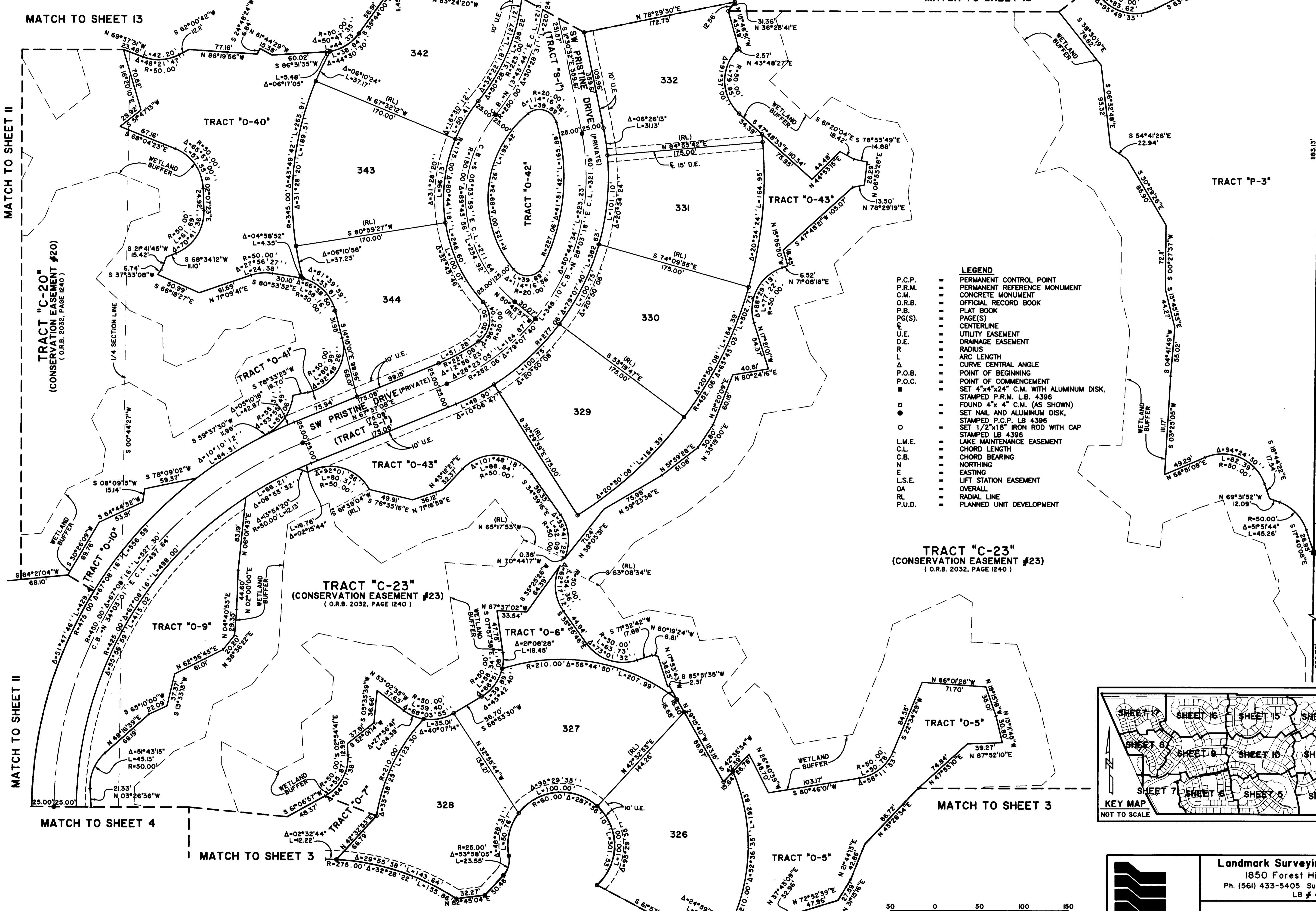


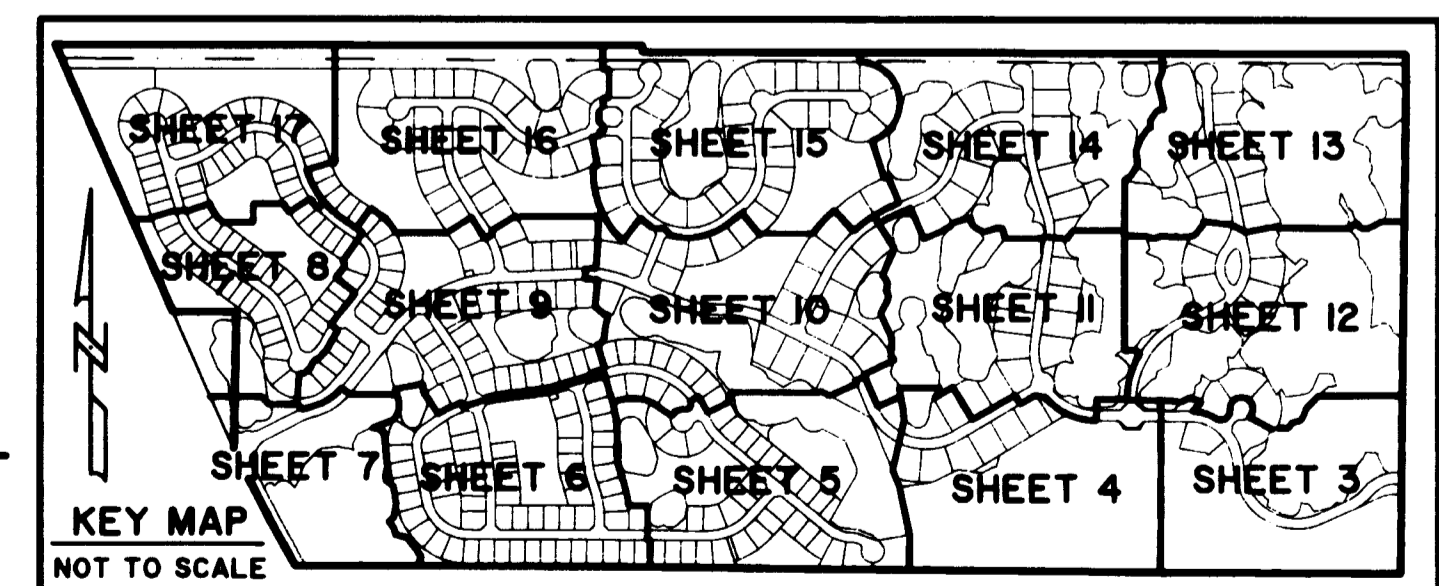
# SAND TRAIL P.U.D.

LYING IN SECTIONS 2 AND 3, TOWNSHIP 38 SOUTH, RANGE 40 EAST, MARTIN COUNTY, FLORIDA.



- LEGEND**
- P.C.P. PERMANENT CONTROL POINT
  - P.R.M. PERMANENT REFERENCE MONUMENT
  - C.M. CONCRETE MONUMENT
  - O.R.B. OFFICIAL RECORD BOOK
  - P.B. PLAT BOOK
  - Pg(S) PAGE(S)
  - CENTERLINE
  - U.E. UTILITY EASEMENT
  - D.E. DRAINAGE EASEMENT
  - R RADIUS
  - L L ARC LENGTH
  - Δ CURVE CENTRAL ANGLE
  - P.O.B. POINT OF BEGINNING
  - P.O.C. POINT OF COMMENCEMENT
  - ■ SET 4"x4"x24" C.M. WITH ALUMINUM DISK, STAMPED P.R.M. L.B. 4396
  - ● FOUND 4" x 4" C.M. (AS SHOWN)
  - ○ SET NAIL AND ALUMINUM DISK, STAMPED P.C.P. LB 4396
  - ○ SET 1/2"x18" IRON ROD WITH CAP
  - — LAKE MAINTENANCE EASEMENT
  - — CHORD LENGTH
  - — C.B. CHORD BEARING
  - — N NORTHING
  - — E EASTING
  - — L.S.E. LIFT STATION EASEMENT
  - — OVERALL
  - — RL RADIAL LINE
  - — P.U.D. PLANNED UNIT DEVELOPMENT

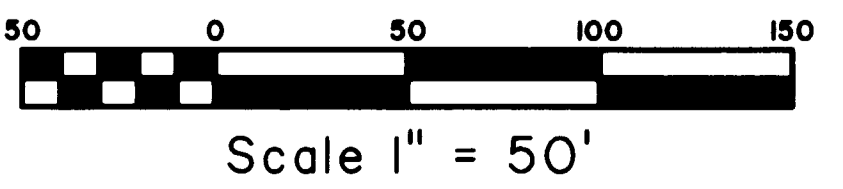
**TRACT "C-23"**  
(CONSERVATION EASEMENT #23)  
(O.R.B. 2032, PAGE 1240)



SHEET 12 OF 17

Landmark Surveying & Mapping Inc.  
1850 Forest Hill Boulevard  
Ph. (561) 433-5405 Suite 100 W.P.B. Florida  
LB # 4396

### SAND TRAIL P.U.D.



NOTE: SEE SHEET 2 OF 17 FOR SURVEYOR'S NOTES

0:\1819011\EPW\13\JMS\2632\2635\_12 Fl1 Feb 16 08:18:36 2007 PLOTTED BY LESLIE C. BISPOTT