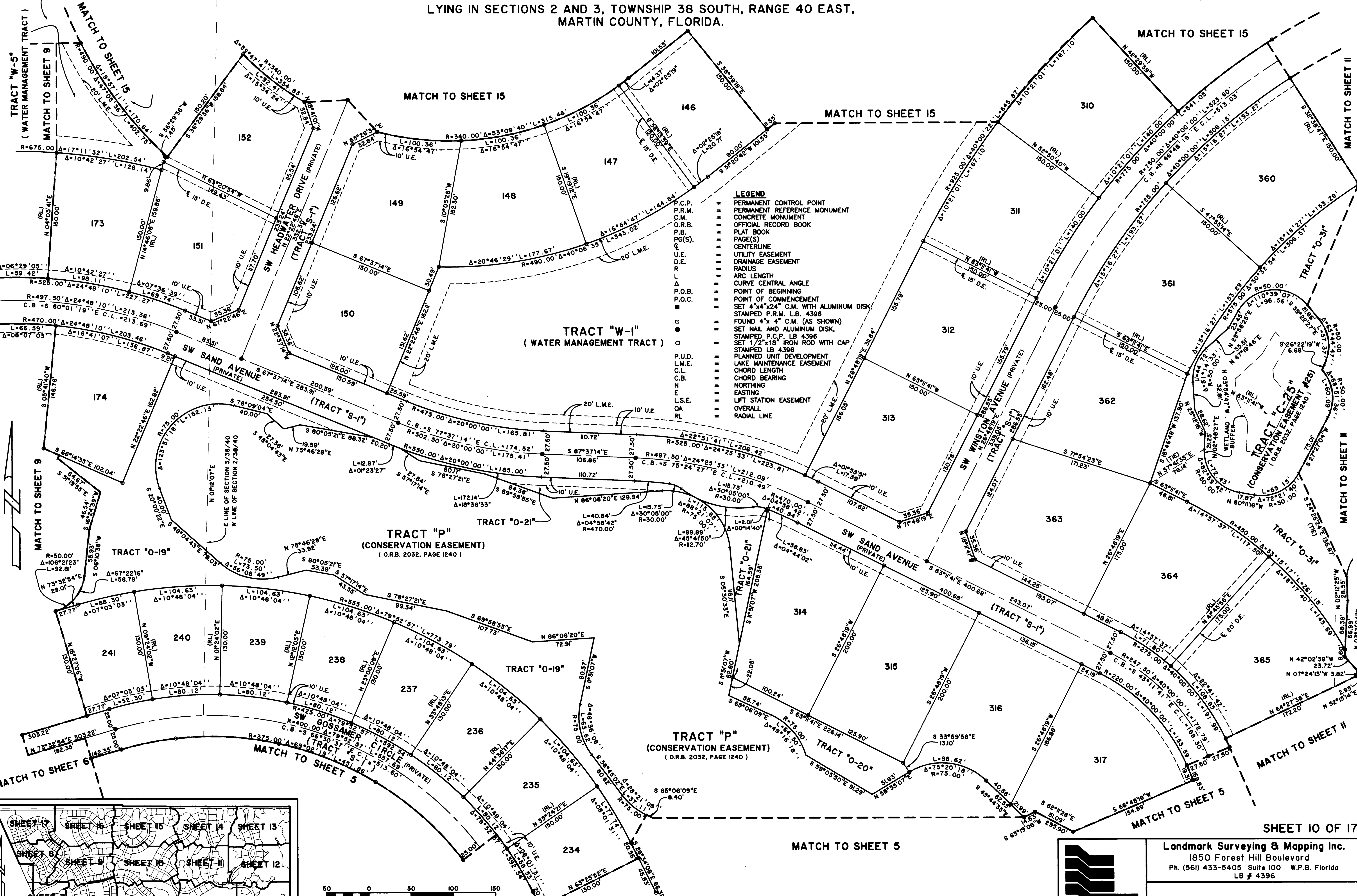


# SAND TRAIL P.U.D.

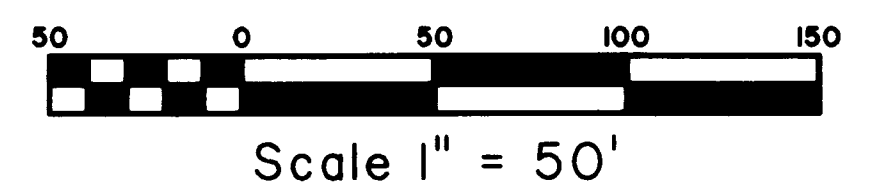
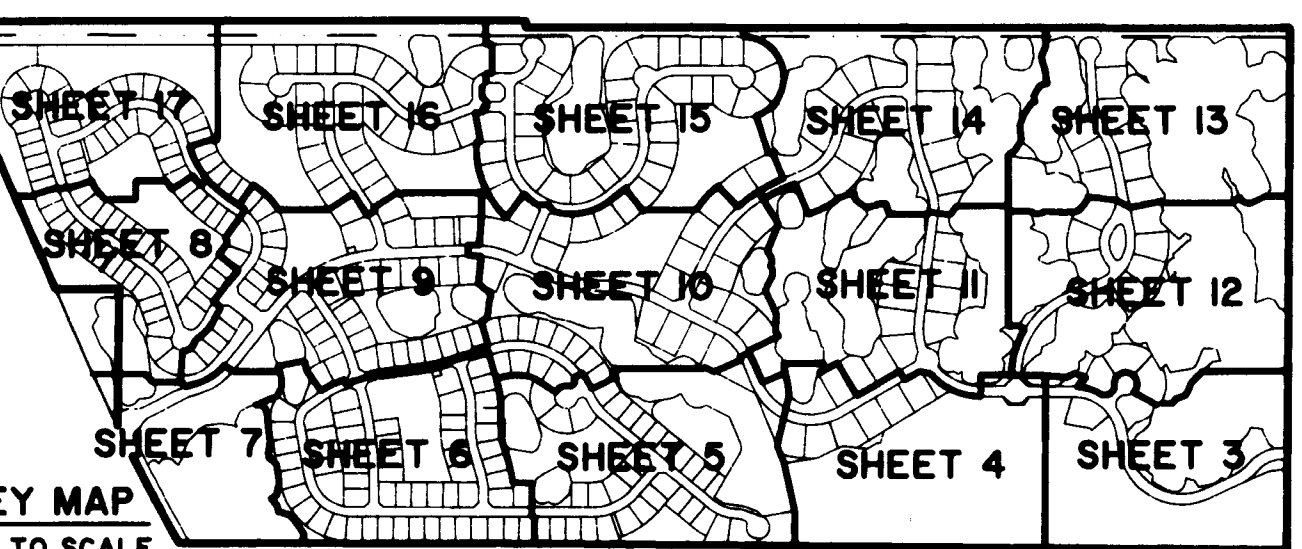
LYING IN SECTIONS 2 AND 3, TOWNSHIP 38 SOUTH, RANGE 40 EAST,  
MARTIN COUNTY, FLORIDA.

MATCH TO SHEET 16

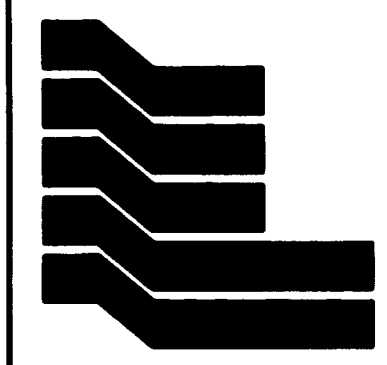
MATCH TO SHEET 15



- LEGEND**
- PERMANENT CONTROL POINT
  - PERMANENT REFERENCE MONUMENT
  - CONCRETE MONUMENT
  - OFFICIAL RECORD BOOK
  - PLAT BOOK
  - P.B.
  - PAGE(S)
  - CENTERLINE
  - UTILITY EASEMENT
  - DRAINAGE EASEMENT
  - RADIUS
  - ARC LENGTH
  - CURVE CENTRAL ANGLE
  - POINT OF BEGINNING
  - POINT OF COMMENCEMENT
  - SET 4"x4"x24" C.M. WITH ALUMINUM DISK
  - STAMPED P.R.M. L.B. 4396
  - FOUND 4"x4" C.M. (AS SHOWN)
  - SET NAIL AND ALUMINUM DISK
  - STAMPED P.C.P. LB 4396
  - SET 1/2"x1/8" IRON ROD WITH CAP
  - STAMPED LB 4396
  - PLANNED UNIT DEVELOPMENT
  - LAKE MAINTENANCE EASEMENT
  - CHORD LENGTH
  - CHORD BEARING
  - NORTHING
  - EASTING
  - LIFT STATION EASEMENT
  - OVERALL
  - RADIAL LINE



NOTE: SEE SHEET 2 OF 17 FOR SURVEYOR'S NOTES



Landmark Surveying & Mapping Inc.  
1850 Forest Hill Boulevard  
Ph. (561) 433-5405 Suite 100 W.P.B. Florida  
LB # 4396

SAND TRAIL P.U.D.

SHEET 10 OF 17

© LEISPTTY/EP/IN/13/005/2632/26323\_10 P1 FEB 16 08:33:17 2007 PLOTTED BY LESLIE C. BISPOTT