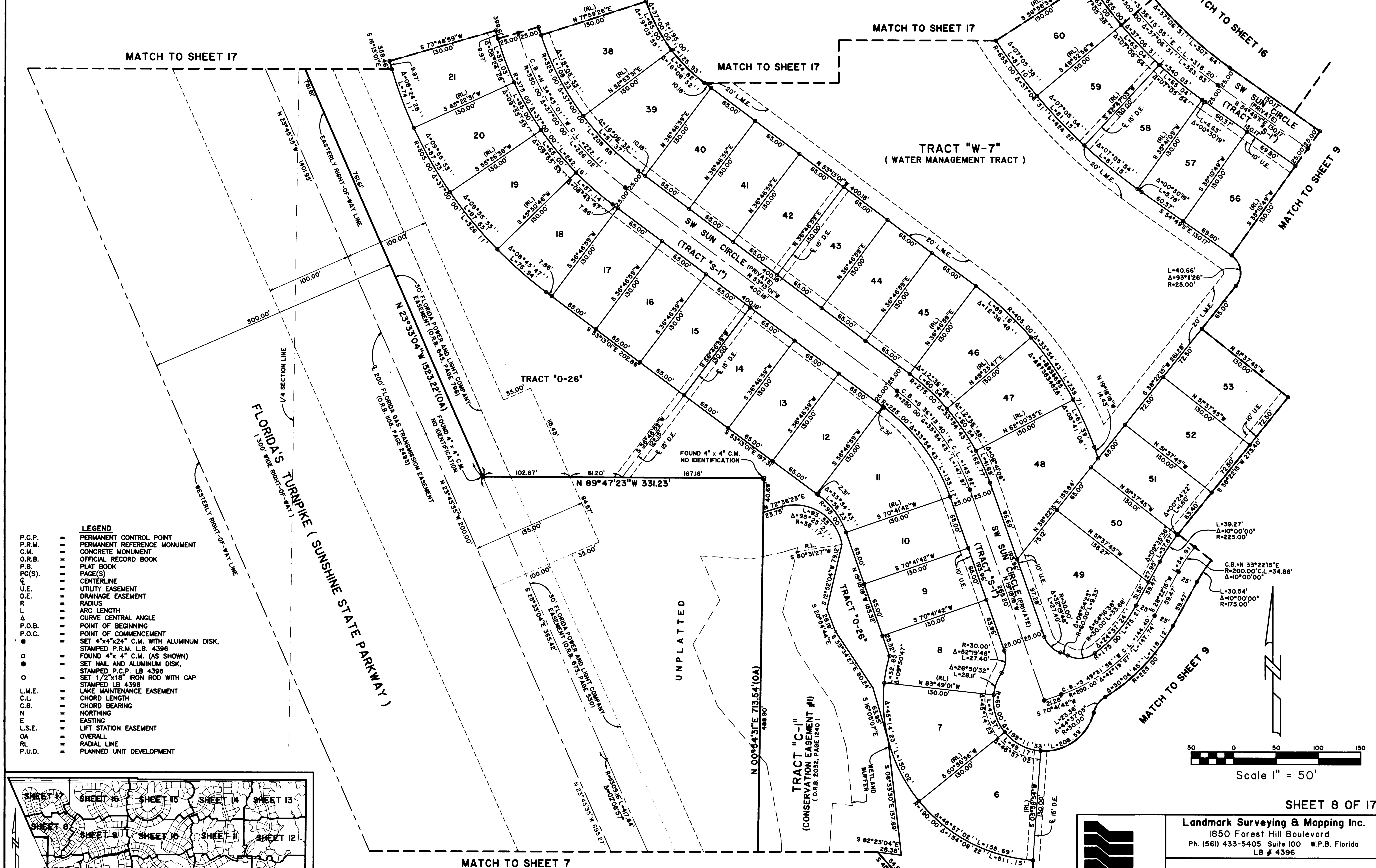
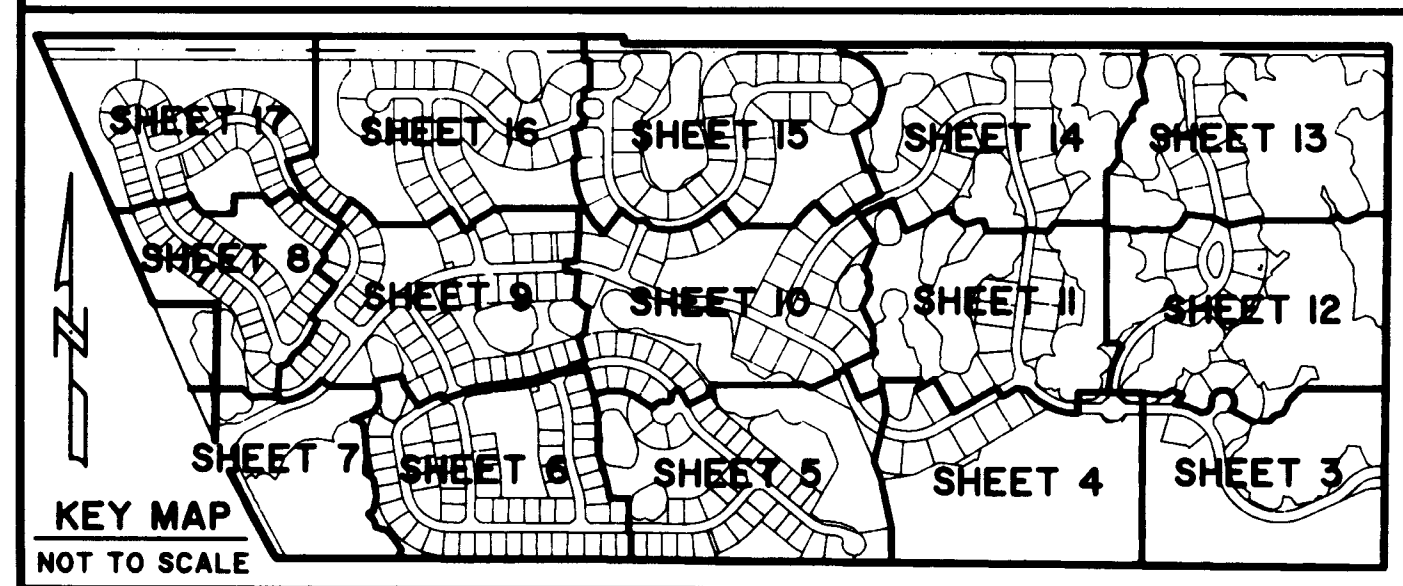


SAND TRAIL P.U.D.

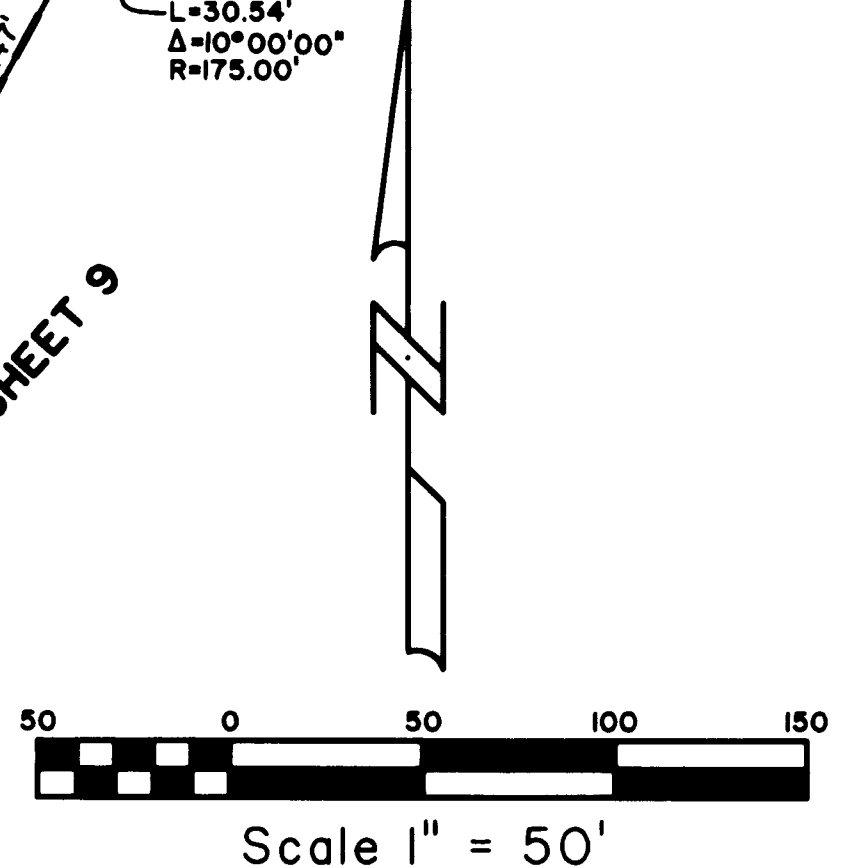
LYING IN SECTIONS 2 AND 3, TOWNSHIP 38 SOUTH, RANGE 40 EAST,
MARTIN COUNTY, FLORIDA.



- LEGEND**
- P.C.P. PERMANENT CONTROL POINT
 - P.R.M. PERMANENT REFERENCE MONUMENT
 - C.M. CONCRETE MONUMENT
 - O.R.B. OFFICIAL RECORD BOOK
 - P.B. PLAT BOOK
 - PG(S) PAGE(S)
 - C CENTERLINE
 - U.E. UTILITY EASEMENT
 - D.E. DRAINAGE EASEMENT
 - R RADIUS
 - L ARC LENGTH
 - Δ CURVE CENTRAL ANGLE
 - P.O.B. POINT OF BEGINNING
 - P.O.C. POINT OF COMMENCEMENT
 - SET 4"x4"x24" C.M. WITH ALUMINUM DISK, STAMPED P.R.M. LB 4396
 - FOUND 4"x4" C.M. (AS SHOWN)
 - SET NAIL AND ALUMINUM DISK, STAMPED P.C.P. LB 4396
 - SET 1/2"x18" IRON ROD WITH CAP, STAMPED LB 4396
 - L.M.E. LAKE MAINTENANCE EASEMENT
 - C.L. CHORD LENGTH
 - C.B. CHORD BEARING
 - N NORTHING
 - E EASTING
 - L.S.E. LIFT STATION EASEMENT
 - OA OVERALL
 - RL RADIAL LINE
 - P.U.D. PLANNED UNIT DEVELOPMENT



NOTE: SEE SHEET 2 OF 17 FOR SURVEYOR'S NOTES



SHEET 8 OF 17

Landmark Surveying & Mapping Inc.
1850 Forest Hill Boulevard
Ph. (561) 433-5405 Suite 100 W.P.B. Florida
LB # 4396

SAND TRAIL P.U.D.

4. U:\BSP011\LEWIN13\0851\2632\2632.dwg P1 Feb 16 08:41:02 2007 PLOTTED BY LESLIE C. BISPOIT