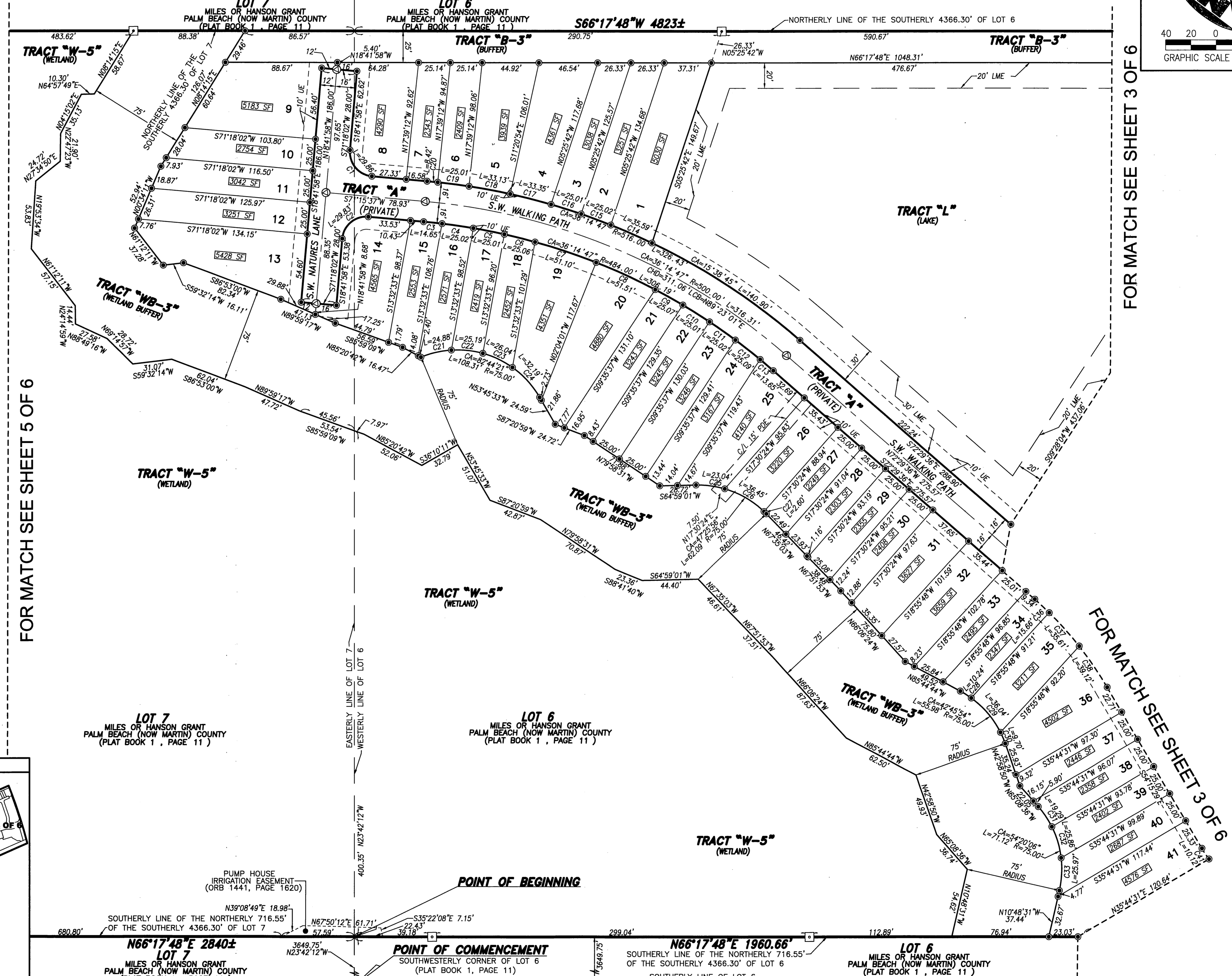
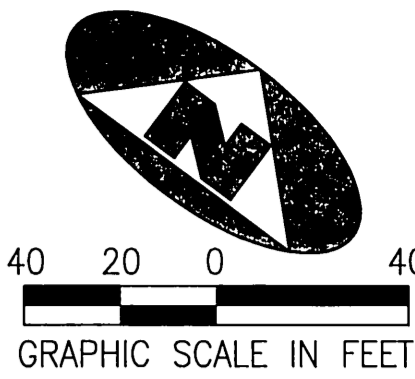


BEING A REPLAT OF A PORTION OF THE NORTH 716.55 FEET OF THE SOUTH 4366.30 FEET OF LOT 6 AND LOT 7 OF THE COMMISSIONER'S SUBDIVISION OF THE MILES OR HANSON GRANT RECORDED IN PLAT BOOK 1, PAGE 11, AND BEING A REPLAT OF A PORTION OF LOT F, STUART FARMS, RECORDED IN PLAT BOOK 1, PAGE 63, PALM BEACH (NOW MARTIN) COUNTY, FLORIDA



FOR MATCH SEE SHEET 3 OF 6

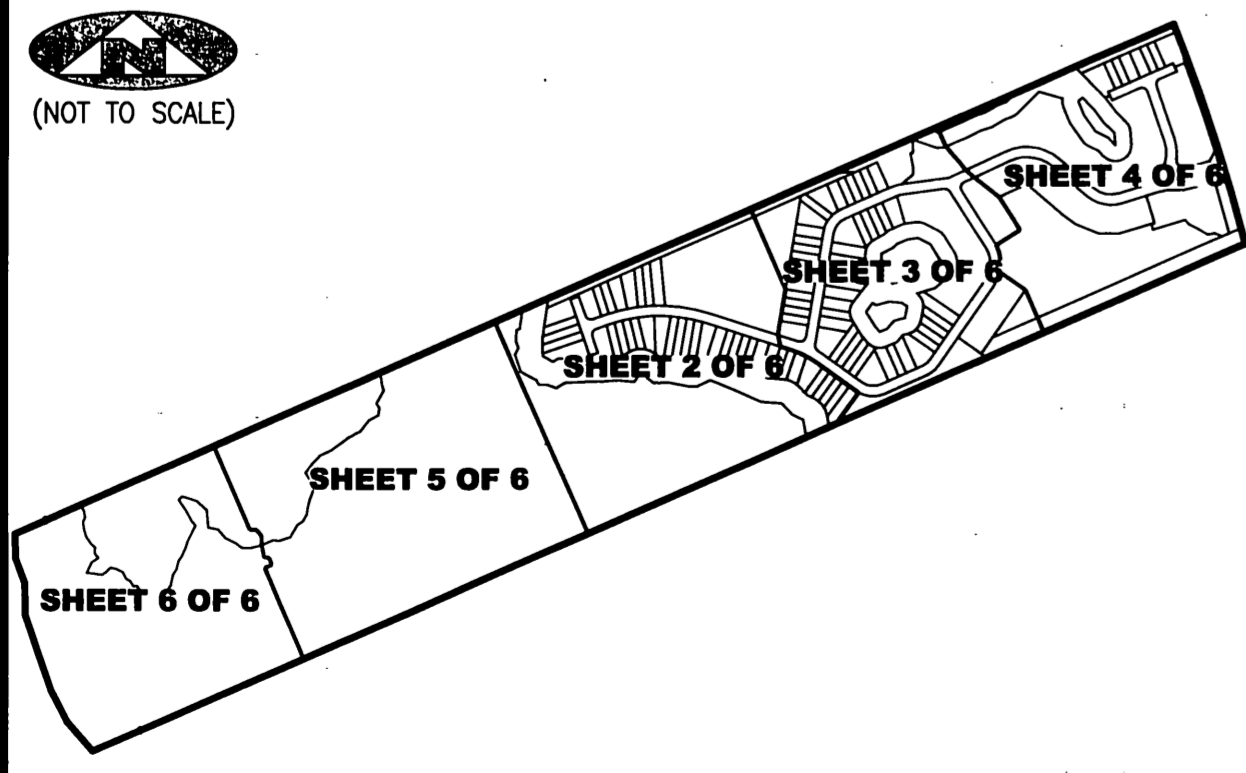
FOR MATCH SEE SHEET 5 OF 6

FOR MATCH SEE SHEET 3 OF 6

CURVE TABLE

Table with 5 columns: Curve ID, Curve Angle, Radius, Length, Chord Distance, and Chord Bearing. Lists curves C1 through C41.

SHEET INDEX



LEGEND

Legend table defining symbols for radial lines, centerlines, easements, control points, monuments, and other survey features.

SURVEYOR'S NOTES

- 1. THE BASE BEARING, AS SHOWN HEREON, IS N66°17'48"E ALONG THE SOUTHERLY LINE OF LOT 6 AND LOT 7, COMMISSIONER'S SUBDIVISION OF THE MILES OR HANSON GRANT RECORDED IN PLAT BOOK 1, PAGE 11, PALM BEACH (NOW MARTIN) COUNTY, FLORIDA.
2. IN THOSE INSTANCES WHERE UTILITY OR DRAINAGE STRUCTURES ARE CONSTRUCTED IN CONFLICT WITH THE PLATTED PERMANENT CONTROL POINT POSITION STRADDLERS MONUMENTED AS PERMANENT CONTROL POINTS WILL BE SET TO REFERENCE THE PLATTED POSITION.
3. LINES THAT INTERSECT CURVES ARE NOT RADIAL UNLESS OTHERWISE NOTED.
4. THIS INSTRUMENT WAS PREPARED BY WM. R. VAN CAMPEN, P.S.M. NO. 2424, IN AND FOR THE OFFICES OF BENCH MARK LAND SURVEYING & MAPPING, INC., 4152 WEST BLUE HERON BOULEVARD, SUITE 121, RIVIERA BEACH, FLORIDA, 33407

BENCH MARK LAND SURVEYING & MAPPING, INC.

4152 W. BLUE HERON BOULEVARD SUITE 121 RIVIERA BEACH FLORIDA 33404 PHONE: (561) 848-2102 • LB 2171 • FAX: (561) 844-9659 EMAIL: bmlsm@aol.com

Table with project metadata: FILE: PLOTREV_B, FB: , WO.NO.: P229, SCALE: 1"=40', DATE: 11/7/2003, DWN: KVC, SHEET 2 OF 6