

CLERK'S RECORDING CERTIFICATE

I, MARSHA EWING, CLERK OF THE CIRCUIT COURT OF MARTIN COUNTY, FLORIDA, HEREBY CERTIFY THAT THIS PLAT WAS FILED FOR RECORD IN

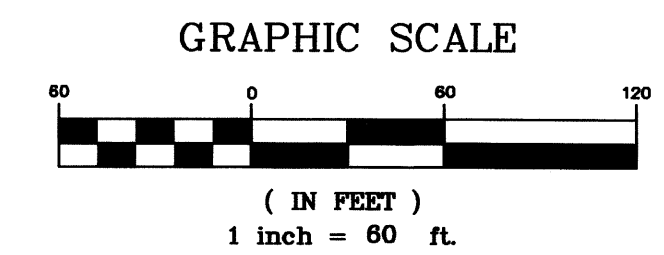
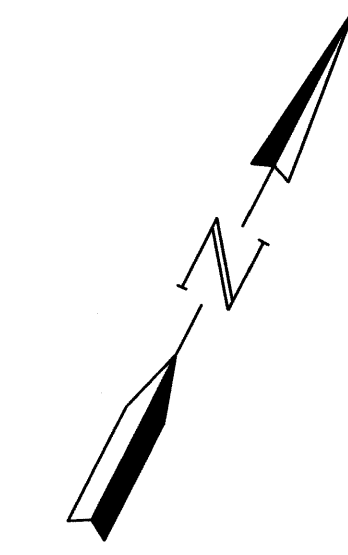
PLAT BOOK 15, PAGE 5, MARTIN COUNTY, FLORIDA, PUBLIC RECORDS THIS

16<sup>th</sup> DAY OF July, 2001.

MARSHA EWING, CLERK OF THE CIRCUIT COURT MARTIN COUNTY, FLORIDA.

FILE NUMBER 1509387 BY Jennifer Lopez DEPUTY CLERK

SUBDIVISION PARCEL CONTROL NUMBER



**LEGEND**

- = SET 3/4" IRON PIPE WITH YELLOW CAP LABELED "G.C.Y. INC. LB 4108"
- = SET PERMANENT REFERENCE MONUMENT (PRM) 4"x4" CONCRETE MONUMENT WITH DISK LABELED "G.C.Y. INC. P.R.M. LB 4108, PSM 4864"
- D = DELTA (CENTRAL ANGLE)
- L = ARC LENGTH
- R = RADIUS
- CB = CHORD BEARING
- LB = LICENSED BUSINESS
- O.R.B. = OFFICIAL RECORD BOOK
- PSM = PROFESSIONAL SURVEYOR AND MAPPER
- P.U.D. = PLANNED UNIT DEVELOPMENT
- C.P.U.D. = COMMERCIAL PLANNED UNIT DEVELOPMENT
- C.A.T.V. = CABLE TELEVISION
- PG. = PAGE
- ± = PLUS OR MINUS
- ⊕ = CENTERLINE

SURVEYOR'S NOTES

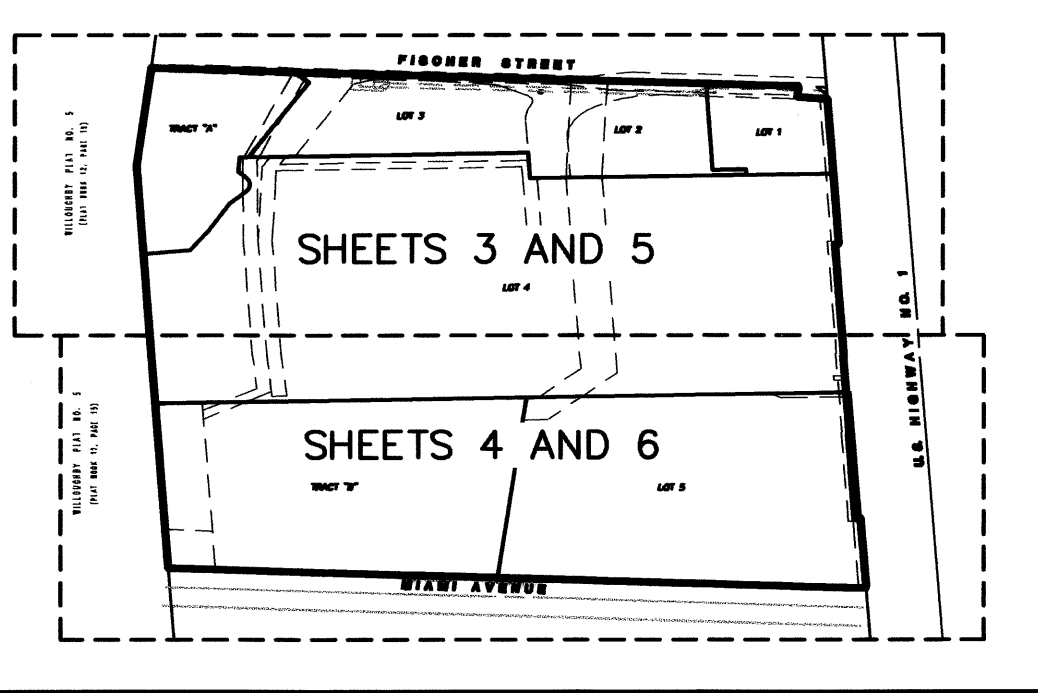
- 1) THIS PLAT, AS RECORDED IN ITS ORIGINAL FORM IN THE PUBLIC RECORDS, IS THE OFFICIAL DEPICTION OF THE SUBDIVIDED LANDS DESCRIBED HEREON AND WILL IN NO CIRCUMSTANCES BE SUPPLANTED IN AUTHORITY BY ANY OTHER FORM OF THE PLAT, WHETHER GRAPHIC OR DIGITAL.
- 2) THERE MAY BE ADDITIONAL RESTRICTIONS THAT ARE NOT RECORDED ON THIS PLAT THAT MAY BE FOUND IN THE PUBLIC RECORDS OF THIS COUNTY.
- 3) THERE SHALL BE NO BUILDING OR ANY OTHER KIND OF CONSTRUCTION, OR PLACEMENT OF TREES OR SHRUBS ON DRAINAGE EASEMENTS.
- 4) BEARINGS SHOWN HEREON ARE REFERENCED TO THE WEST LINE OF U.S. HIGHWAY ONE, A 200 FOOT RIGHT-OF-WAY. SAID LINE BEARS N29°01'32"W.
- 5) SEE SHEETS 5, 6 AND 7 OF 7 FOR EASEMENT DETAILS.

Job Number 00-1036-02-02  
Licensed Business #4108

**G C Y**  
INCORPORATED  
PROFESSIONAL SURVEYORS AND MAPPERS  
P.O. BOX 1469, PALM CITY, FLORIDA 34991  
1505 S.W. MARTIN HWY. • 561-286-8083  
CERTIFICATE OF AUTHORIZATION LB 4108

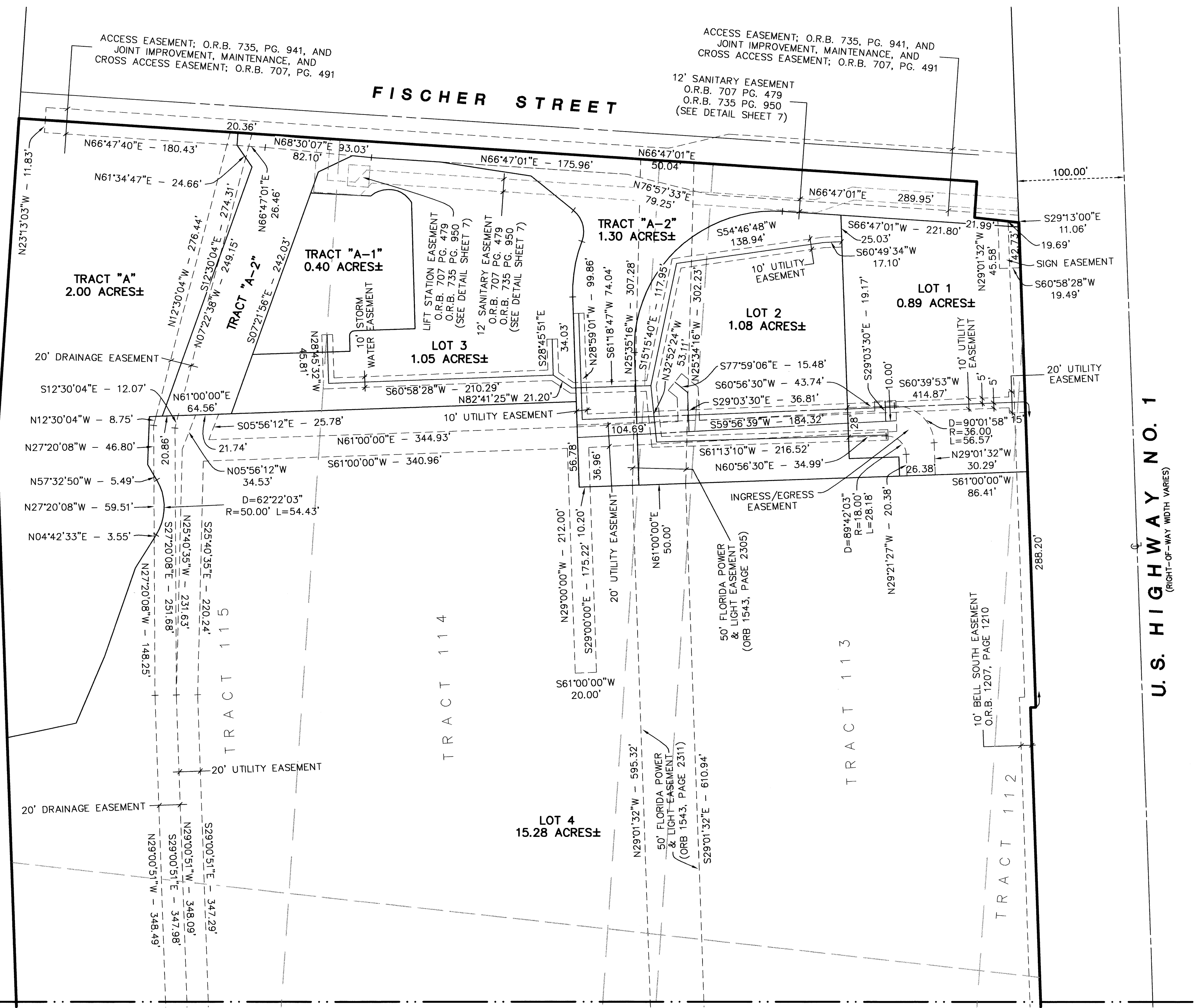
# Plat of Sunbelt Center, a CPUD

Being a replat of a portion of Tracts 112, 113, 114, 115, 142, 143, 144 and 145 of the Plat of Port Sewall as recorded in Plat Book 3, Page 7, Public Records, Martin County, Florida and abandoned Miami Avenue lying in the Hanson Grant, City of Stuart, Martin County, Florida



SHEET INDEX

WILLOUGHBY PLAT NO. 8  
(PLAT BOOK 13, PAGE 1)



**NOTE:**  
WHERE CENTERLINES ARE SHOWN FOR EASEMENTS, ALL DATA SHOWN REFERENCE SAID CENTERLINES