

FILED FOR RECORD
 MARTIN COUNTY
 25 APR 12 PM 12:31
 DEPUTY CLERK

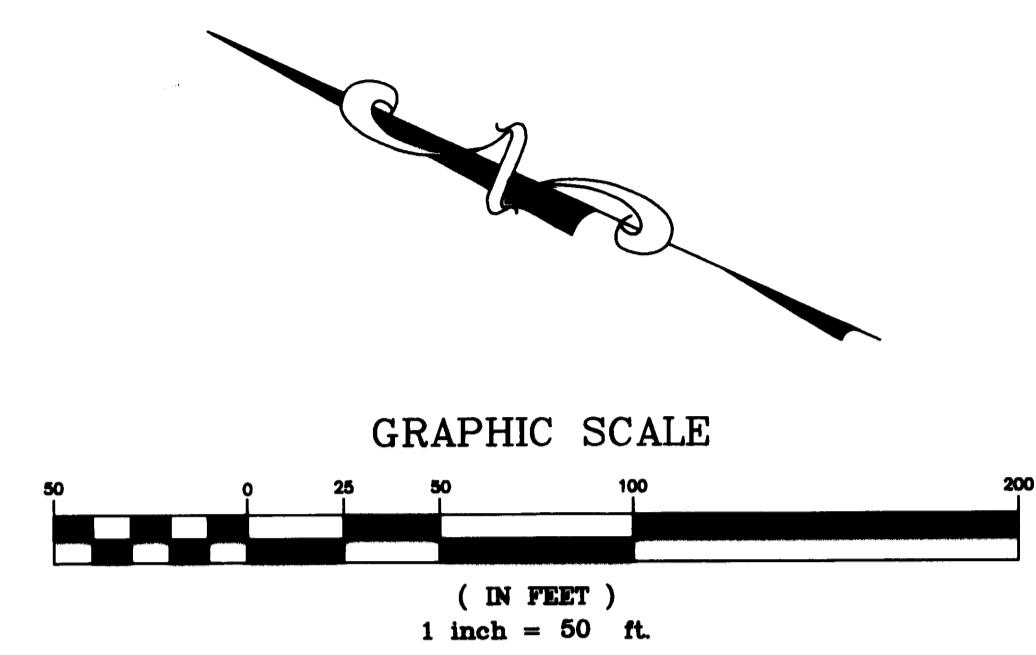
CLERK'S RECORDING CERTIFICATE
 I, MARSHA STILLER, CLERK OF THE CIRCUIT COURT OF MARTIN COUNTY, FLORIDA, HEREBY CERTIFY THAT THIS PLAT WAS FILED FOR RECORD IN PLAT BOOK 14, PAGE 2, MARTIN COUNTY, FLORIDA, PUBLIC RECORDS THIS 12 DAY OF APRIL, 1996.
 Marsha Stiller
 MARSHA STILLER, CLERK OF THE CIRCUIT COURT
 MARTIN COUNTY, FLORIDA
 FILE NUMBER 1169548 BY *Deborah Lampton*
 DEPUTY CLERK

A PLAT OF OLD ST. LUCIE

SHEET 2 OF 2

A REPLAT OF LOTS 1, 2, 3, AND 4, BLOCK 29, OFFICIAL MAP OF SEWALL'S POINT LAND COMPANY'S REVISED PLAT AS RECORDED IN PLAT BOOK 3, PAGE 8, PUBLIC RECORDS OF PALM BEACH (NOW MARTIN) COUNTY, FLORIDA, LYING IN LOT 2 OF THE COMMISSIONER'S SUBDIVISION OF THE HANSON GRANT AS RECORDED IN PLAT BOOK 1, PAGE 11, PUBLIC RECORDS OF PALM BEACH (NOW MARTIN) COUNTY, FLORIDA.

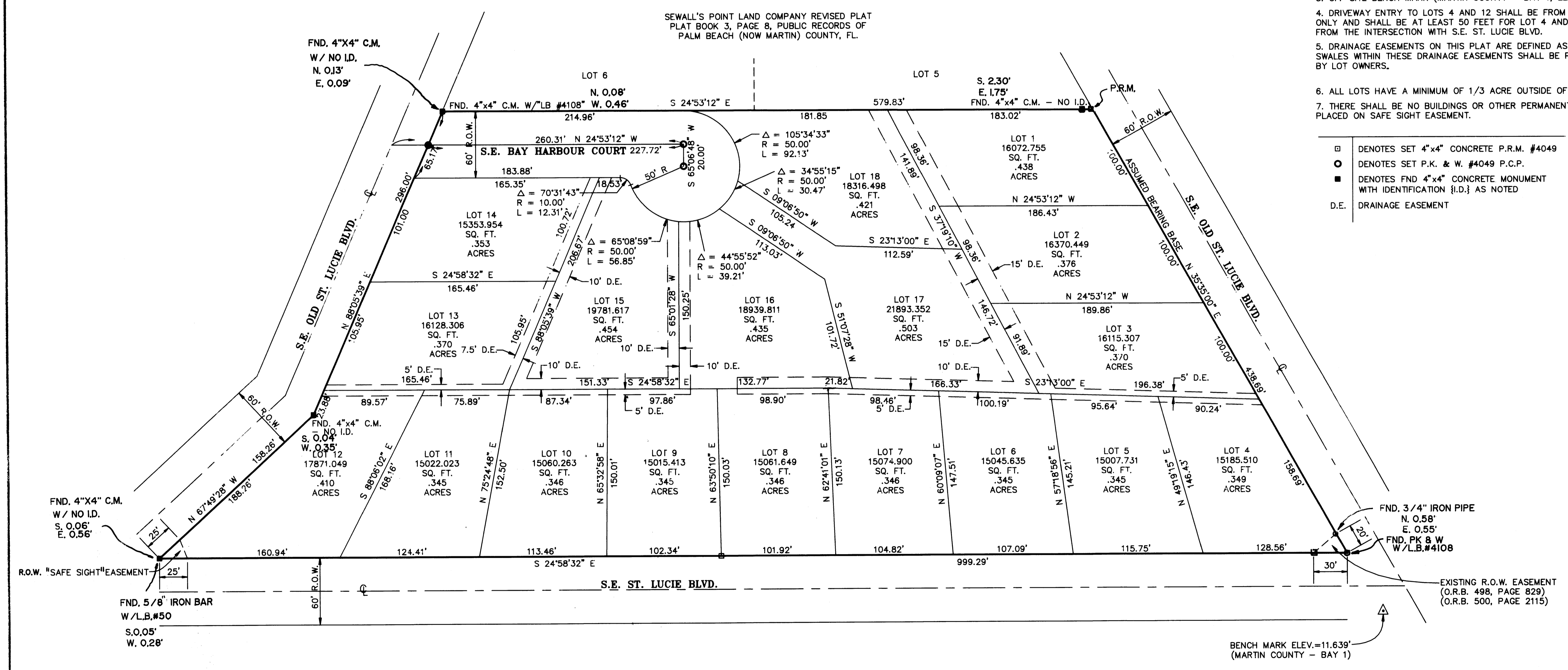
37-38-41-029-000-0000.0
 SUBDIVISION PARCEL CONTROL NUMBER



LEGEND AND NOTES

1. THERE ARE ADDITIONAL RESTRICTIONS NOT RECORDED ON THIS PLAT THAT CAN BE FOUND IN THE PUBLIC RECORDS OF MARTIN COUNTY, FL.
2. THE SURVEY BEARINGS SHOWN HEREON ARE REFERENCED TO THE WEST RIGHT-OF-WAY LINE OF OLD SAINT LUCIE BOULEVARD WHICH IS ASSUMED TO BE N 35°35'00" E.
3. OFF SITE BENCH MARK (MARTIN COUNTY - BAY 1, ELEV. 11.639)
4. DRIVEWAY ENTRY TO LOTS 4 AND 12 SHALL BE FROM S.E. OLD ST. LUCIE BLVD. ONLY AND SHALL BE AT LEAST 50 FEET FOR LOT 4 AND 100 FEET FOR LOT 12 FROM THE INTERSECTION WITH S.E. ST. LUCIE BLVD.
5. DRAINAGE EASEMENTS ON THIS PLAT ARE DEFINED AS SHOWN. SWALES WITHIN THESE DRAINAGE EASEMENTS SHALL BE PRESERVED AND MAINTAINED BY LOT OWNERS.
6. ALL LOTS HAVE A MINIMUM OF 1/3 ACRE OUTSIDE OF DRAINAGE EASEMENT AREAS.
7. THERE SHALL BE NO BUILDINGS OR OTHER PERMANENT STRUCTURES OR TREES PLACED ON SAFE SIGHT EASEMENT.

- DENOTES SET 4"x4" CONCRETE P.R.M. #4049
- DENOTES SET P.K. & W. #4049 P.C.P.
- DENOTES FND 4"x4" CONCRETE MONUMENT WITH IDENTIFICATION {I.D.} AS NOTED
- D.E. DRAINAGE EASEMENT



STEPHEN J. BROWN, INC.
 SURVEYORS-DESIGNERS
 LAND PLANNERS-CONSULTANTS
 290 FLORIDA STREET
 STUART, FLORIDA 34994
 407-288-7176