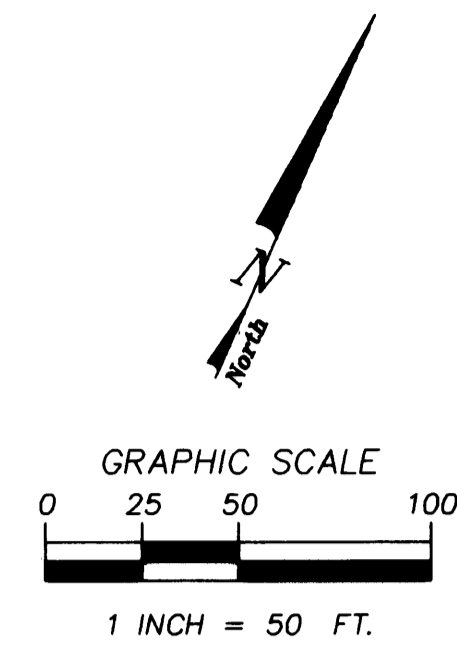


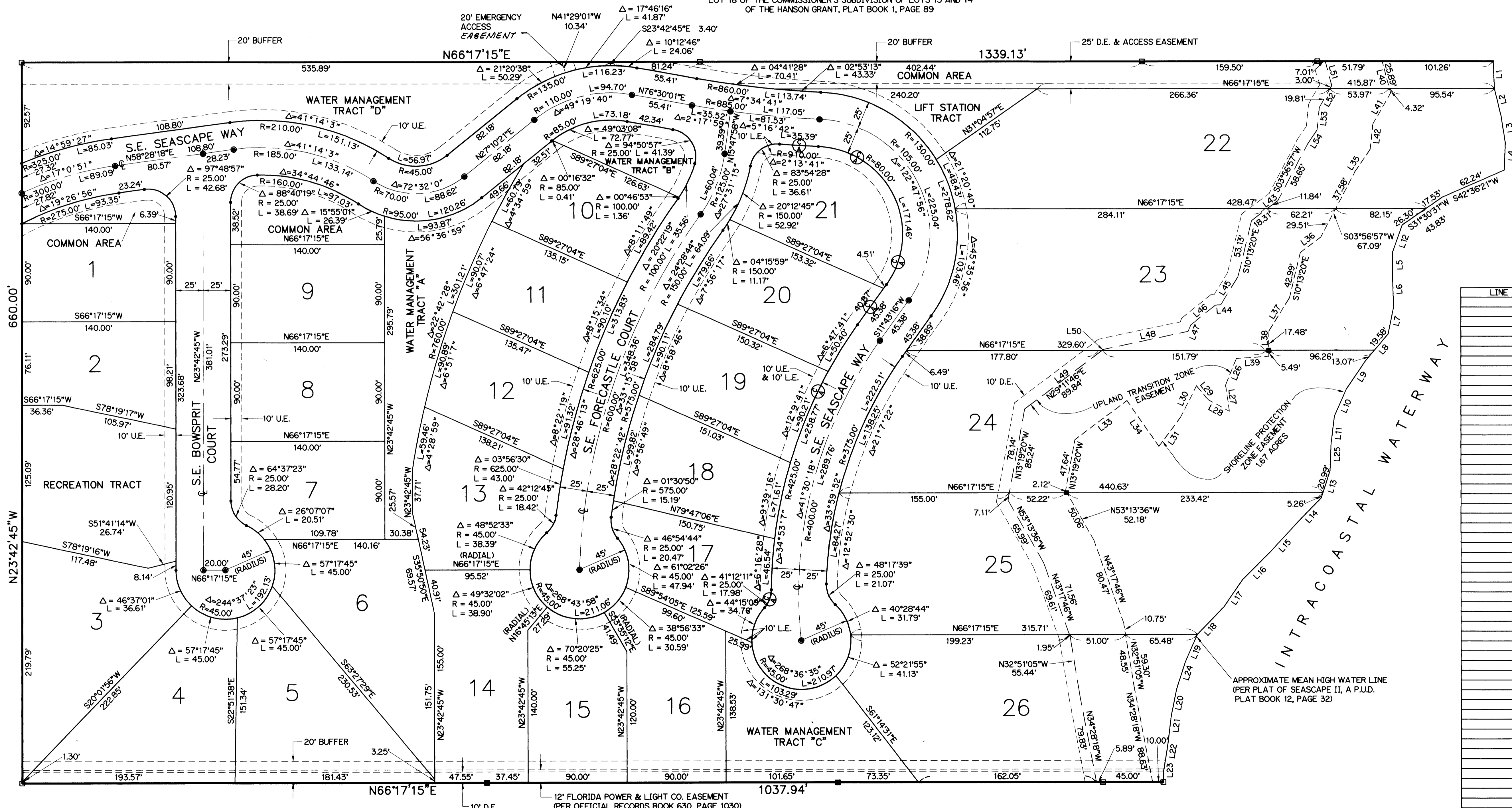
A PLAT OF THE COLONY OF ROCKY POINT, A P.U.D.

BEING A REPLAT OF SEASCAPE II, A P.U.D., AS RECORDED IN PLAT BOOK 12, PAGE 32
PUBLIC RECORDS OF MARTIN COUNTY, FLORIDA
LYING IN THE HANSON GRANT, MARTIN COUNTY, FLORIDA



File # 1169235
Plat Book
14 page 5
Sheet
2 of 2

SCHOONER OAKS CONDOMINIUM
LOT 18 OF THE COMMISSIONER'S SUBDIVISION OF LOTS 13 AND 14
OF THE HANSON GRANT, PLAT BOOK 1, PAGE 89



LINE DATA		
LINE	DIRECTION	DISTANCE
L1	S26°03'33"E	25.02'
L2	S37°12'26"E	25.71'
L3	S32°48'16"E	25.32'
L4	S21°25'17"E	25.02'
L5	S23°42'42"E	25.00'
L6	S26°00'11"E	25.02'
L7	S12°24'05"E	25.50'
L8	S16°19'02"W	32.65'
L9	S10°30'10"W	30.23'
L10	S00°02'10"W	27.31'
L11	S16°52'09"E	25.18'
L12	S03°54'48"E	26.57'
L13	S05°58'05"E	26.25'
L14	S20°07'06"W	34.66'
L15	S18°54'05"W	33.97'
L16	S21°17'15"W	35.36'
L17	S10°30'12"W	30.23'
L18	S20°07'06"W	34.66'
L19	S00°02'13"W	27.31'
L20	S12°24'09"E	25.50'
L21	S16°52'11"E	25.18'
L22	S14°37'20"E	25.32'
L23	S22°31'04"E	9.98'
L24	S05°58'04"E	26.25'
L25	S21°25'19"E	25.02'
L26	S01°29'41"E	26.24'
L27	S32°07'33"E	24.09'
L28	N85°26'13"W	21.54'
L29	N63°55'03"W	17.05'
L30	N03°09'06"E	32.51'
L31	S12°55'36"W	32.77'
L32	S29°11'46"W	59.21'
L33	N58°33'52"W	51.11'
L34	S10°32'03"W	24.89'
L35	S29°27'23"W	23.43'
L36	S07°43'44"W	35.80'
L37	S03°11'24"E	22.97'
L38	S62°40'29"W	29.35'
L39	S38°48'40"E	30.21'
L40	S05°47'50"W	32.92'
L41	S17°41'20"E	23.45'
L42	S29°27'23"W	30.15'
L43	S62°40'29"W	4.98'
L44	S07°43'44"W	29.88'
L45	S27°06'36"W	28.78'
L46	S01°29'41"E	6.59'
L47	N54°24'08"E	78.80'
L48	S29°11'46"W	88.12'
L49	S05°47'50"W	22.81'
L50	S17°41'20"E	21.27'
L51	S10°32'03"W	15.20'

LEGEND:
 □ - DENOTES P.R.M. (PERMANENT REFERENCE MONUMENT) FOUND NO. 3541
 ● - DENOTES P.R.M. (PERMANENT REFERENCE MONUMENT) SET NO. LS 4382
 ○ - DENOTES P.C.P. (PERMANENT CONTROL POINT) SET NO. LS 4382
 U.E. - DENOTES UTILITY EASEMENT
 D.E. - DENOTES DRAINAGE EASEMENT
 L.E. - DENOTES LANDSCAPE EASEMENT
 ⊕ - DENOTES CONTROL OF ACCESS (NO VEHICULAR ACCESS WITHOUT THE APPROVAL OF THE BOARD OF MARTIN COUNTY COMMISSIONERS)

THE REEF
(PLAT BOOK 13, PAGE 28)
 BEARING BASE:
 THE NORTH LINE OF THE PLAT OF SEASCAPE II, A P.U.D. IS TAKEN TO BEAR N 66°17'15"E AND ALL BEARINGS SHOWN HEREON ARE RELATIVE THERETO.

- NOTES:**
1. EACH NUMBERED TRACT DEPICTED HEREON IS A LOT.
 2. THERE SHALL BE NO BUILDING OR ANY OTHER KIND OF CONSTRUCTION OR TREES OR SHRUBS PLACED ON DRAINAGE EASEMENTS.
 3. THERE SHALL BE NO BUILDING OR OTHER PERMANENT STRUCTURES PLACED ON UTILITY EASEMENTS.



LINDAHL, BROWNING, FERRARI, & HELLSTROM, INC.
 CONSULTING ENGINEERS, PLANNERS & SURVEYORS
 210 JUPITER LAKES BLVD. SUITE 200 JUPITER, FL 33458
 407-746-9248

2 2
Sheet of