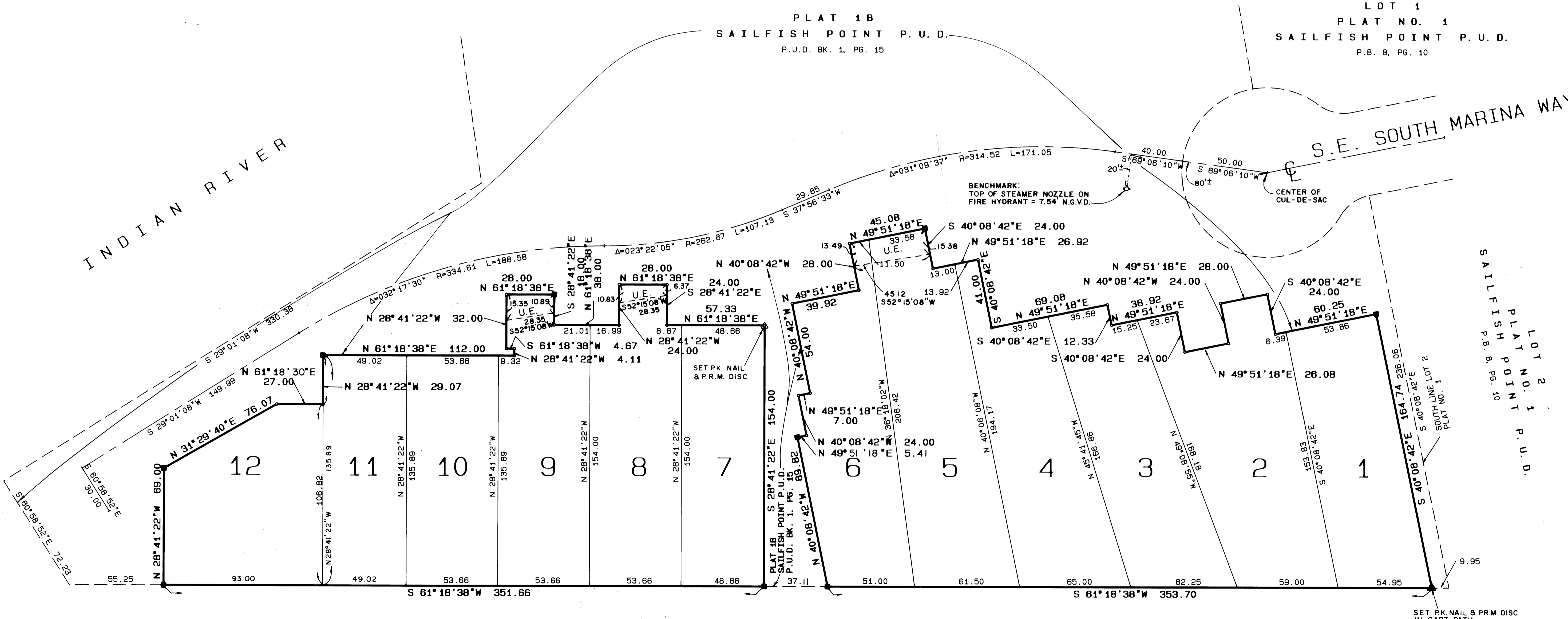
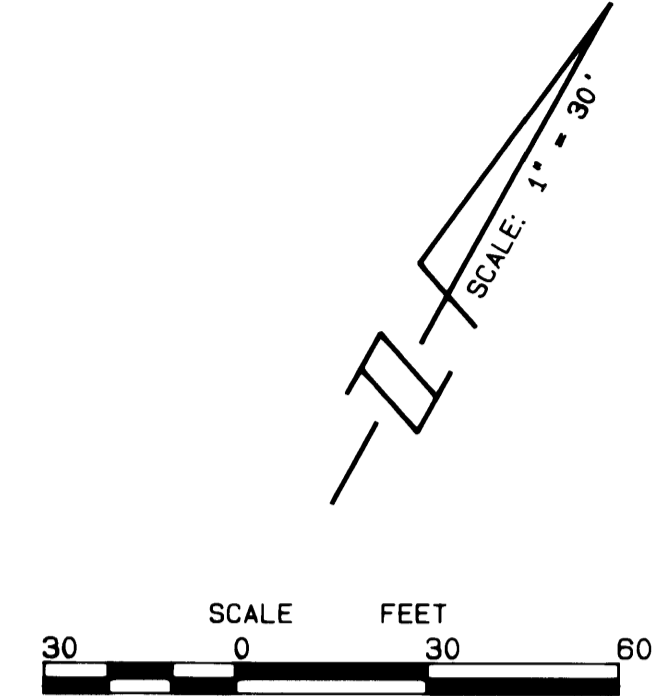


A PLAT OF PLAT NO. 1E - SAILFISH POINT P.U.D.

BEING A REPLAT OF LOTS 12 THROUGH 19, BLOCK "C" AND
LOTS 20 THROUGH 28, BLOCK "D", PLAT 1B SAILFISH POINT P.U.D.
AS RECORDED IN P.U.D. BOOK 1, PAGE 15, MARTIN COUNTY PUBLIC RECORDS.
LYING IN PART OF FRACTIONAL SECTION 8, TOWNSHIP 38 SOUTH, RANGE 42 EAST
MARTIN COUNTY, FLORIDA



NOTES:
* EACH NUMBERED TRACT DEPICTED HEREON IS A LOT.

* THERE SHALL BE NO BUILDINGS OR OTHER PERMANENT STRUCTURES
PLACED ON UTILITY EASEMENTS.
* THERE SHALL BE NO LOT SPLITS EXCEPT TO CREATE LARGER LOTS.
* THERE MAY BE ADDITIONAL RESTRICTIONS THAT ARE NOT RECORDED ON
THIS PLAT THAT MAY BE FOUND IN THE PUBLIC RECORDS OF MARTIN
COUNTY, FLORIDA.

LEGEND:
■ - DENOTES P.R.M. (PERMANENT REFERENCE MONUMENT) SET
U.E. - UTILITY EASEMENT

BEARING BASE:
THE SOUTH LINE OF LOT 2, PLAT NO. 1, SAILFISH POINT P.U.D.
IS TAKEN TO BEAR S 40°08'42"E, AND ALL BEARINGS SHOWN
HEREON ARE RELATIVE THERETO.

PLAT NO. 6
SAILFISH POINT P.U.D.
P.B. 8, PG. 90

THIS PLAT PREPARED BY:
THOMAS C. VOKOUN, P.L.S.
FOR
LINDAHL, BROWNING, FERRARI & HELLSTROM, INC.

LINDAHL, BROWNING, FERRARI & HELLSTROM, INC.
CONSULTING ENGINEERS, PLANNERS & SURVEYORS
BLDG. 5000, SUITE 104 10 CENTRAL PARKWAY 2222 COLONIAL ROAD
210 JUPITER LAKES BLVD. SUITE 420 SUITE 201
JUPITER, FL. 33408 STUART, FL. 34907 FT. PIERCE, FL. 34950
407-746-9248 407-266-3883 407-461-2450