

PB 12 pg 3

WILLOUGHBY PLAT NO. 4

BEING A TRACT OF LAND LYING IN THE HANSON GRANT SITUATED IN MARTIN COUNTY, FLORIDA.

I, MARSHA STILLER, CLERK OF THE CIRCUIT COURT OF MARTIN COUNTY, FLORIDA, HEREBY CERTIFY THAT THIS PLAT WAS FILED FOR RECORD IN PLAT BOOK 12, PAGE 3, MARTIN COUNTY, FLORIDA, PUBLIC RECORDS, THIS DAY OF _____, 1989.

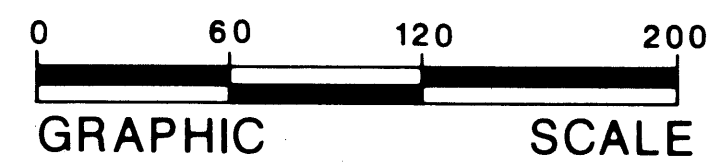
MARSHA STILLER, CLERK
CIRCUIT COURT
MARTIN COUNTY, FLORIDA

BY: _____
DEPUTY CLERK

FILE NO. _____

SURVEYOR'S NOTES:

- A. THERE SHALL BE NO BUILDING OR ANY OTHER KIND OF CONSTRUCTION OR TREES OR SHRUBS PLACED ON DRAINAGE EASEMENTS.
- B. THERE SHALL BE NO BUILDINGS OR OTHER PERMANENT STRUCTURES PLACED ON UTILITY EASEMENTS.
- C. THERE SHALL BE NO LOT SPLITS EXCEPT TO CREATE LARGER LOTS.
- D. THERE MAY BE ADDITIONAL RESTRICTIONS THAT ARE NOT RECORDED ON THIS PLAT THAT MAY BE FOUND IN THE PUBIC RECORDS OF THIS COUNTY.



SCALE: 1" = 60'

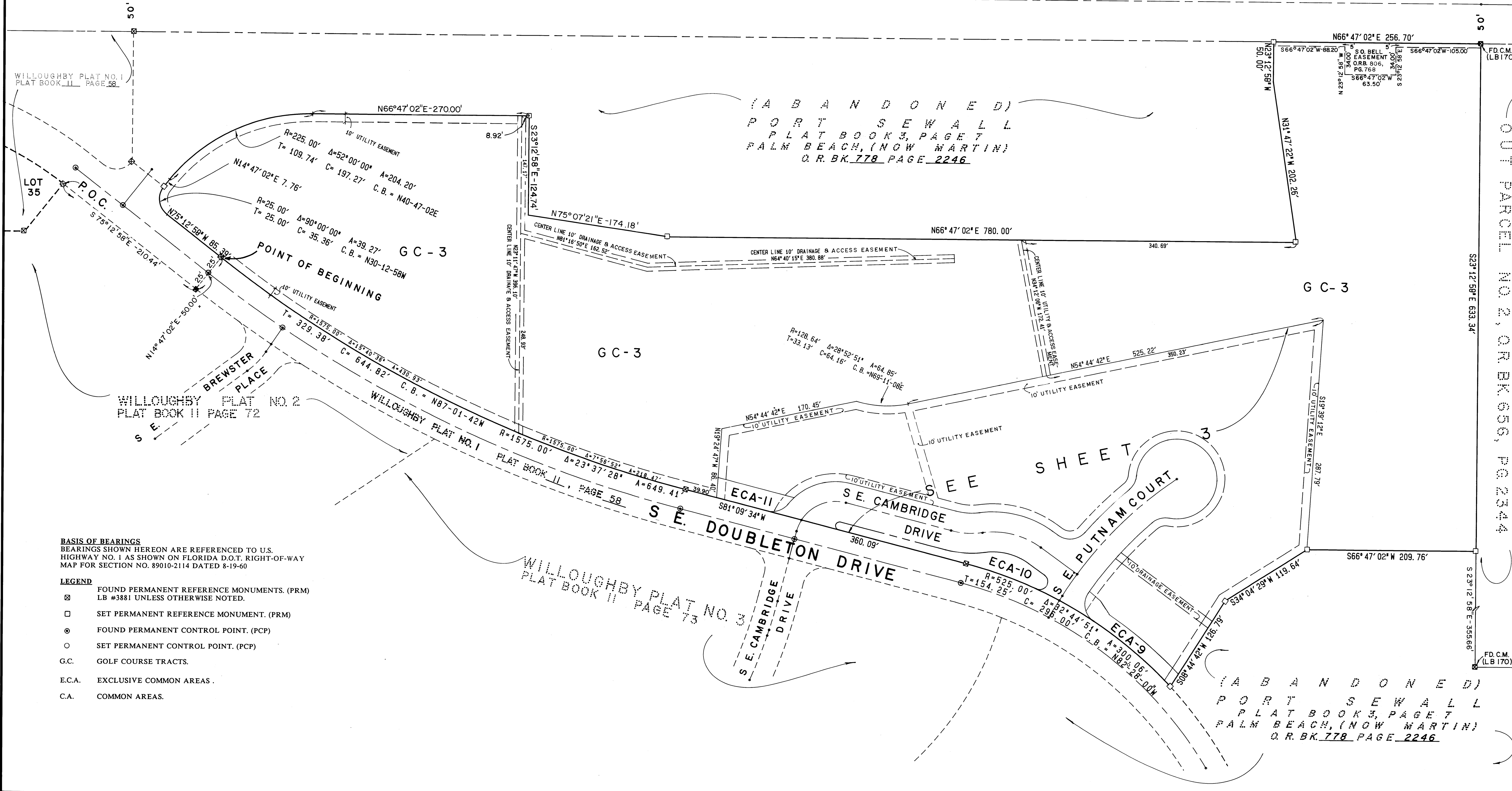
SCALE: 1" = 60'

APRIL 1989

Mutcheon Engineers
a division of Kimley-Horn and Associates, Inc.
11 East Osceola Street, Stuart, Florida 34994-2114

SHEET 2 OF 3

S E INDIAN STREET



BASIS OF BEARINGS
BEARINGS SHOWN HEREON ARE REFERENCED TO U.S. HIGHWAY NO. 1 AS SHOWN ON FLORIDA D.O.T. RIGHT-OF-WAY MAP FOR SECTION NO. 89010-2114 DATED 8-19-60

- LEGEND**
- ☒ FOUND PERMANENT REFERENCE MONUMENTS. (PRM) LB #3881 UNLESS OTHERWISE NOTED.
 - ⊙ SET PERMANENT REFERENCE MONUMENT. (PRM)
 - ⊙ FOUND PERMANENT CONTROL POINT. (PCP)
 - SET PERMANENT CONTROL POINT. (PCP)
 - G.C. GOLF COURSE TRACTS.
 - E.C.A. EXCLUSIVE COMMON AREAS.
 - C.A. COMMON AREAS.

(A B A N D O N E D)
P O R T S E W A L L
P L A T B O O K 3, P A G E 7
P A L M B E A C H, (N O W M A R T I N)
O. R. B. K. 778 P A G E 2246

OUT PARCEL NO. 2, O.R.B.K. 656, PG. 2544

(A B A N D O N E D)
P O R T S E W A L L
P L A T B O O K 3, P A G E 7
P A L M B E A C H, (N O W M A R T I N)
O. R. B. K. 778 P A G E 2246