

# WILLOUGHBY PLAT NO. 1

BEING A TRACT OF LAND LYING IN THE HANSON GRANT SITUATED IN MARTIN COUNTY, FLORIDA.

I, MARSHA STILLER, CLERK OF THE CIRCUIT COURT OF MARTIN COUNTY, FLORIDA, HEREBY CERTIFY THAT THIS PLAT WAS FILED FOR RECORD IN PLAT BOOK 11, PAGE 58, MARTIN COUNTY, FLORIDA, PUBLIC RECORDS, THIS DAY OF \_\_\_\_\_, 1988.

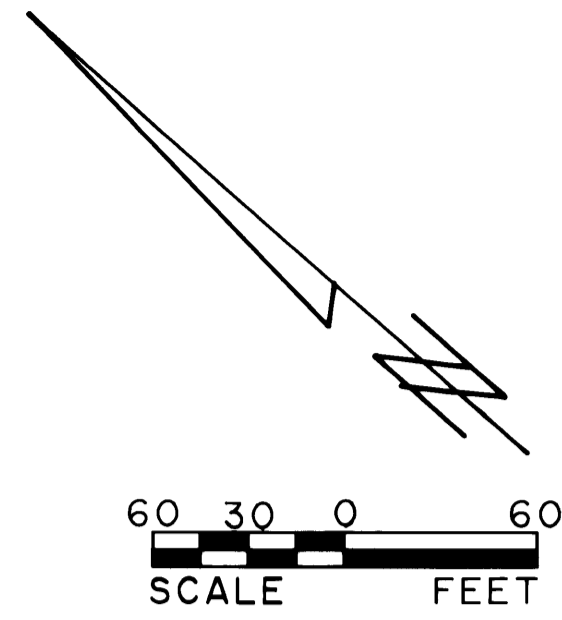
MARSHA STILLER, CLERK  
CIRCUIT COURT  
MARTIN COUNTY, FLORIDA

FILE NO.

DEPUTY CLERK

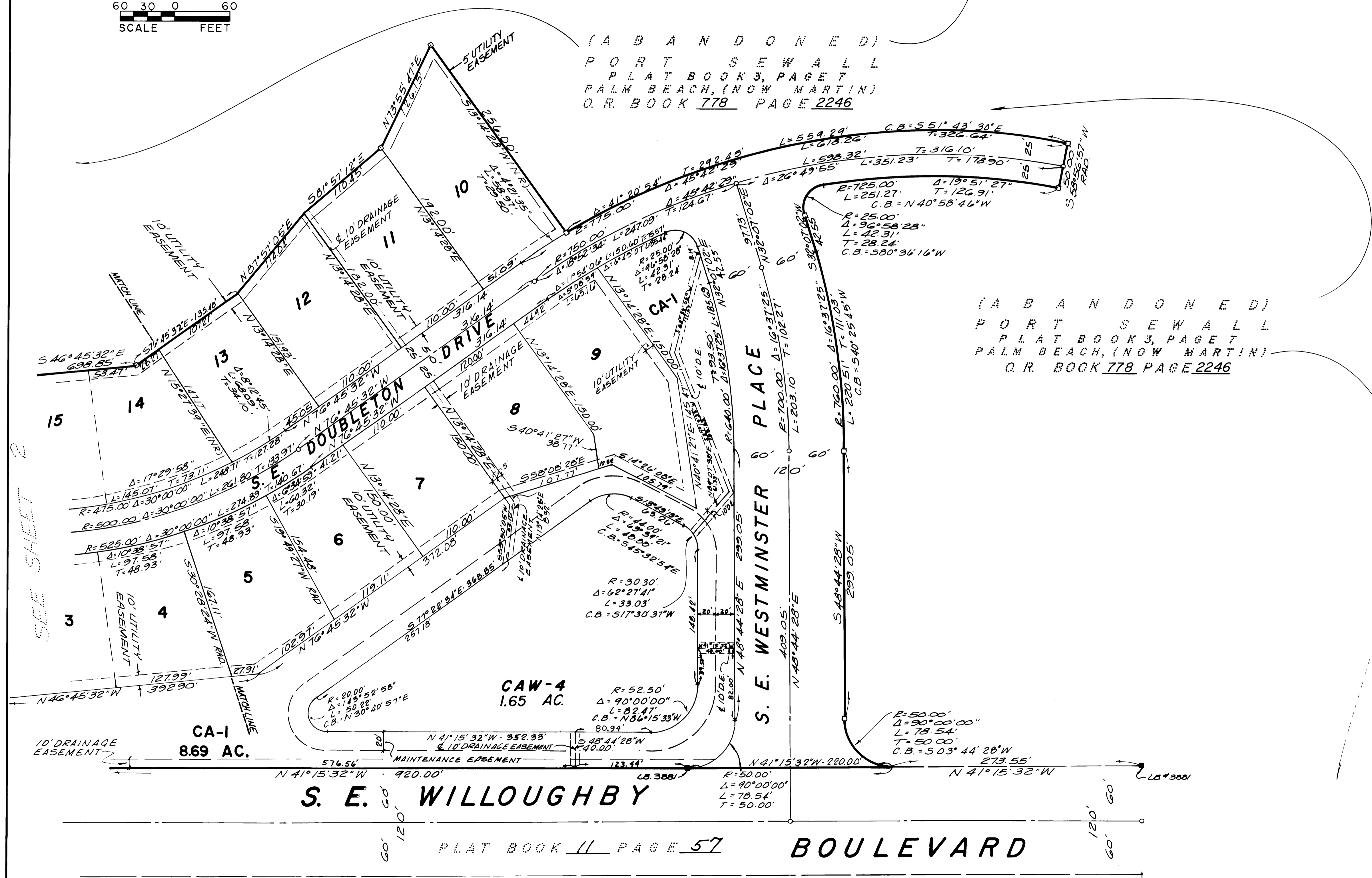
**AUGUST 1988**

**SHEET 3 OF 5**



(A B A N D O N E D)  
P O R T S E W A L L  
P L A T B O O K 3, P A G E 7  
P A L M B E A C H, (N O W M A R T I N)  
O. R. B O O K 778 P A G E 2246

(A B A N D O N E D)  
P O R T S E W A L L  
P L A T B O O K 3, P A G E 7  
P A L M B E A C H, (N O W M A R T I N)  
O. R. B O O K 778 P A G E 2246



BASIS OF BEARINGS  
BEARINGS SHOWN HEREON ARE REFERENCED TO  
U.S. HIGHWAY NO. 1 AS SHOWN ON RIGHT-OF-WAY  
MAP FOR SECTION NO. 8901-112 DATED 8-19-60.

- LEGEND**
- INDICATES FOUND CONCRETE MONUMENT AS NOTED (PRM)
  - INDICATES FOUND IRON PIPE AS NOTED
  - INDICATES SET P.R.M. AS NOTED
  - CA INDICATES Common Area PARCEL
  - INDICATES PERMANENT CONTROL POINT (PCP)
  - CAW INDICATES LAKE PARCEL

**Hutcheon Engineers**  
CIVIL ENGINEERS & SURVEYORS  
11 East Osceola Street, Stuart, Florida 34994  
BELLE GLADE WEST PALM BEACH STUART

**SURVEYOR'S NOTES**

- A. There shall be no building, any other kind of construction, or trees or shrubs placed on drainage easements.
- B. There shall be no building or other permanent structures placed on utility easements.
- C. There shall be no lot splits except to create larger lots.

SEE SHEET 2