

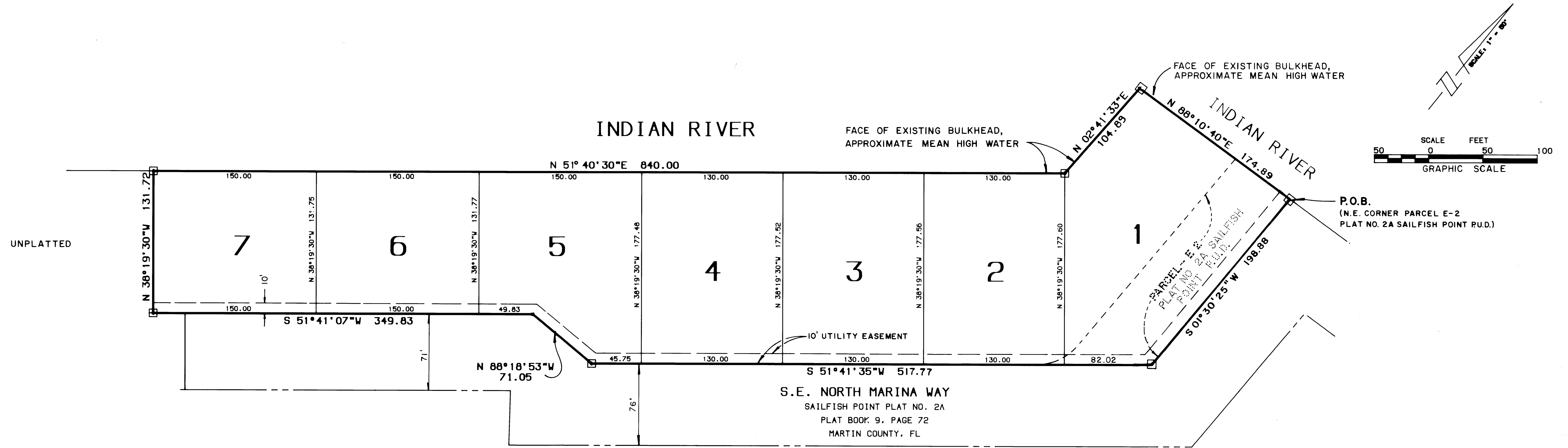
# PLAT NO. 16 SAILFISH POINT P.U.D.

BEING A REPLAT OF PARCEL E-2, PLAT 2A SAILFISH POINT P.U.D.  
AS RECORDED IN PLAT BOOK 9, PAGE 72, TOGETHER WITH  
A PARCEL OF LAND LYING IN FRACTIONAL SECTION 8,  
TOWNSHIP 38 SOUTH, RANGE 42 EAST,  
MARTIN COUNTY, FLORIDA

SEPTEMBER, 1987

SHEET 2 OF 2

I, MARSHA STILLER, CLERK OF THE CIRCUIT COURT OF MARTIN COUNTY, FLORIDA, HEREBY CERTIFY THAT THIS PLAT WAS FILED FOR RECORD IN PLAT BOOK 11, PAGE 8, MARTIN COUNTY, FLORIDA, PUBLIC RECORDS, THIS DAY OF SEPTEMBER, 1987.  
MARSHA STILLER, CLERK CIRCUIT COURT MARTIN COUNTY, FLORIDA.  
BY DEPUTY CLERK  
FILE NO.  
(CIRCUIT COURT SEAL)



### COVENANTS & RESTRICTIONS

THIS PLAT AND THE PROPERTY DESCRIBED HEREIN, ARE SUBJECT TO THE COVENANTS, RESTRICTIONS, LIEN RIGHTS, AND OTHER PROVISIONS CONTAINED IN THAT CERTAIN DECLARATION OF PROTECTIVE COVENANTS AND RESTRICTIONS FOR SAILFISH POINT, DATED JANUARY 25, 1980, AND RECORDED FEBRUARY 4, 1980, UNDER CLERK'S FILE NUMBER 365941, IN OFFICIAL RECORD BOOK 488, AT PAGE 2058, PUBLIC RECORDS OF MARTIN COUNTY, FLORIDA, AS AMENDED BY THE FIRST AMENDMENT TO DECLARATION, RECORDED UNDER CLERK'S FILE NUMBER 399150, IN OFFICIAL RECORD BOOK 513, AT PAGE 1094, PUBLIC RECORDS OF MARTIN COUNTY, FLORIDA, AND THE SECOND AMENDMENT TO DECLARATION, RECORDED UNDER CLERK'S FILE NUMBER 478598, IN OFFICIAL RECORD BOOK 573, AT PAGE 1112, PUBLIC RECORDS OF MARTIN COUNTY, FLORIDA, AND THE THIRD AMENDMENT TO DECLARATION, RECORDED UNDER CLERK'S FILE NUMBER 514594, IN OFFICIAL RECORD BOOK 602, PAGE 899, PUBLIC RECORDS OF MARTIN COUNTY, FLORIDA, AND THE FOURTH AMENDMENT TO DECLARATION, RECORDED UNDER CLERK'S FILE NUMBER 538378, IN OFFICIAL RECORD BOOK 622, PAGE 199, PUBLIC RECORDS OF MARTIN COUNTY, FLORIDA, AND THE FIFTH AMENDMENT TO DECLARATION, RECORDED UNDER CLERK'S FILE NUMBER 591182, IN OFFICIAL RECORD BOOK 665, PAGE 2653, PUBLIC RECORDS OF MARTIN COUNTY, FLORIDA, AND THE SIXTH AMENDMENT TO DECLARATION, RECORDED UNDER CLERK'S FILE NUMBER 648296, IN OFFICIAL RECORD BOOK 712, PAGE 2347, PUBLIC RECORDS OF MARTIN COUNTY, FLORIDA, AND THE SEVENTH AMENDMENT TO DECLARATION, RECORDED UNDER CLERK'S FILE NUMBER 662721, IN OFFICIAL RECORD BOOK 724, PAGE 2382, PUBLIC RECORDS OF MARTIN COUNTY, FLORIDA, TOGETHER WITH THE COVENANTS, RESTRICTIONS, AND OTHER PROVISIONS CONTAINED IN THAT CERTAIN SUPPLEMENTARY DECLARATION OF PROTECTIVE COVENANTS AND RESTRICTIONS, FOR PLAT NO. 16 SAILFISH POINT P.U.D., RECORDED CONCURRENTLY WITH THE RECORDATION OF THIS PLAT.

□ - DENOTES SET PERMANENT REFERENCE MONUMENT (P.R.M.)

BEARING BASE:  
BEARINGS SHOWN HEREON ARE REFERENCED TO PLAT NO. 2A SAILFISH POINT P.U.D., AS RECORDED IN PLAT BOOK 9, PAGE 72, MARTIN COUNTY, FLORIDA.

### BUILDING SETBACKS:

- FRONT - 25' FROM RIGHT-OF-WAY
- SIDES - 15' FROM PROPERTY LINE
- REAR - 50' FROM PROPERTY LINE
- POOLS - OPEN - 0' FROM REAR PROPERTY LINE
- SCREEN ENCLOSED - 50' FEET FROM REAR PROPERTY LINE
- OPEN OR ENCLOSED - 15' FROM SIDE PROPERTY LINE

NOTE:  
SEE P.U.D. AMENDMENT NO. 20 REGARDING POOL SETBACKS

NOTE:  
THERE SHALL BE NO BUILDINGS OR STRUCTURES PLACED ON UTILITY EASEMENTS.  
THERE SHALL BE NO LOT SPLITS THAT WOULD CREATE LOTS LESS THAN 15,000 SQUARE FEET.

LINDAHL, BROWNING, FERRARI & HELLSTROM  
Consulting Engineers, Planners & Surveyors  
BLDG. 9000, SUITE 104 10 CENTRAL PARKWAY  
210 JUPITER LAKES BLVD. SUITE 420  
JUPITER, FL 33466 STUART, FL 33497