

I, MARSHA STILLER, CLERK OF THE CIRCUIT COURT OF MARTIN COUNTY, FLORIDA, HEREBY CERTIFY THAT THIS PLAT WAS FILED FOR RECORD IN PLAT BOOK 25, PAGE 3, MARTIN COUNTY, FLORIDA, PUBLIC RECORDS, THIS 3 DAY OF MAY, 1987.

MARSHA STILLER, CLERK OF THE CIRCUIT COURT MARTIN COUNTY, FLORIDA

BY: _____ DEPUTY CLERK

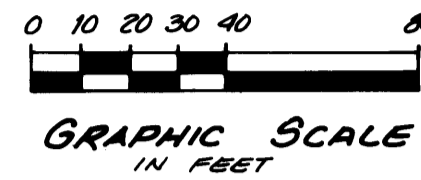
FILE NO. _____

S. E. LANDING PLACE

BEING PART OF SECTION 23,
TOWNSHIP 40 SOUTH, RANGE 42 EAST,
MARTIN COUNTY, FLORIDA

MAY, 1986

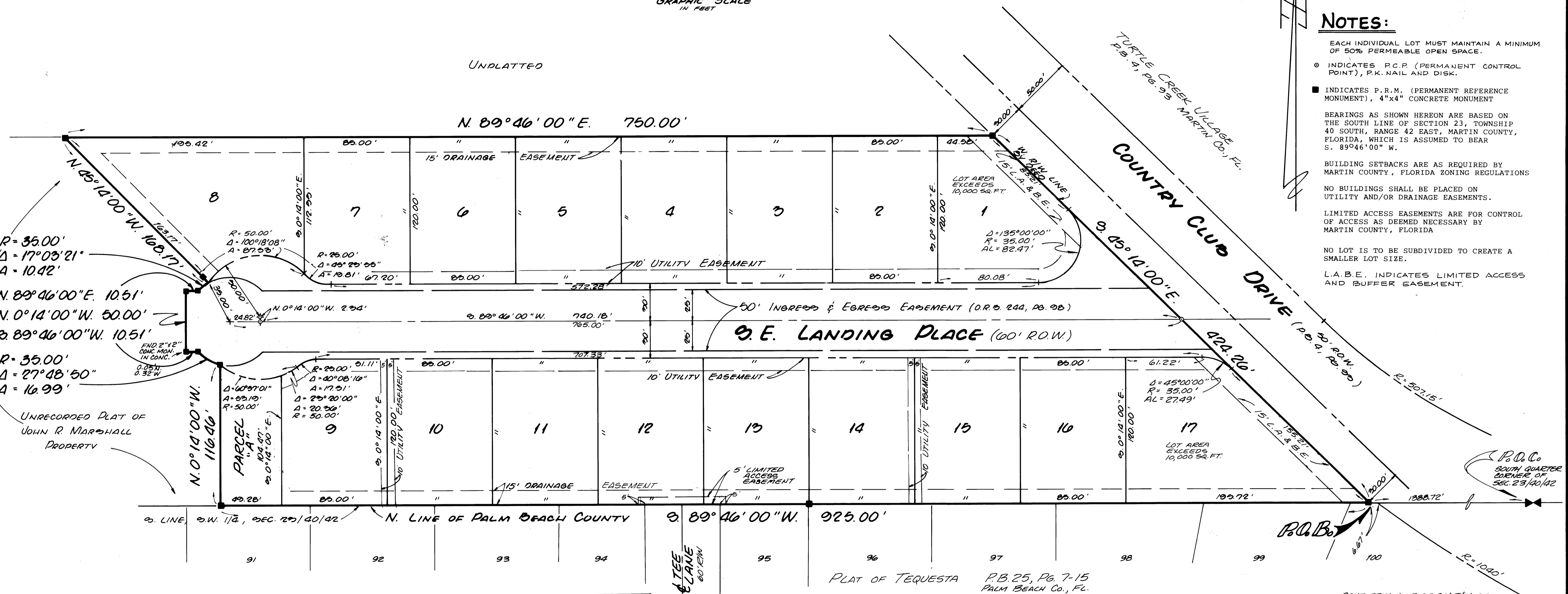
SHEET 2 OF 2



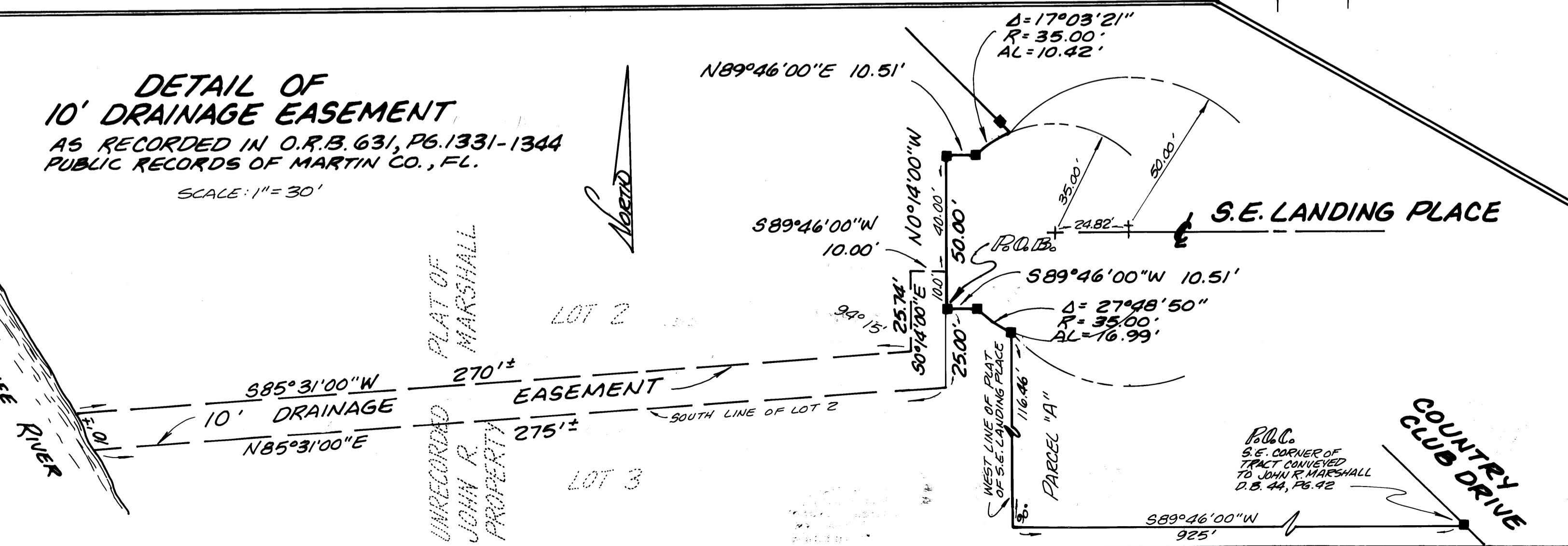
UNPLATTED

NOTES:

- EACH INDIVIDUAL LOT MUST MAINTAIN A MINIMUM OF 50% PERMEABLE OPEN SPACE.
- INDICATES P.C.P. (PERMANENT CONTROL POINT), P.K. NAIL AND DISK.
- INDICATES P.R.M. (PERMANENT REFERENCE MONUMENT), 4"x4" CONCRETE MONUMENT
- BEARINGS AS SHOWN HEREON ARE BASED ON THE SOUTH LINE OF SECTION 23, TOWNSHIP 40 SOUTH, RANGE 42 EAST, MARTIN COUNTY, FLORIDA, WHICH IS ASSUMED TO BEAR S. 89°46'00" W.
- BUILDING SETBACKS ARE AS REQUIRED BY MARTIN COUNTY, FLORIDA ZONING REGULATIONS
- NO BUILDINGS SHALL BE PLACED ON UTILITY AND/OR DRAINAGE EASEMENTS.
- LIMITED ACCESS EASEMENTS ARE FOR CONTROL OF ACCESS AS DEEMED NECESSARY BY MARTIN COUNTY, FLORIDA
- NO LOT IS TO BE SUBDIVIDED TO CREATE A SMALLER LOT SIZE.
- L.A.B.E. INDICATES LIMITED ACCESS AND BUFFER EASEMENT.



DETAIL OF 10' DRAINAGE EASEMENT
AS RECORDED IN O.R.B. 631, PG. 1331-1344
PUBLIC RECORDS OF MARTIN CO., FL.
SCALE: 1" = 30'



DWN. BCM	DATE
CHK. RAM	DWG. NO. 04-307
REVISIONS:	SCALE 1" = 40'
	SHEET 2 OF 2

MIXON LAND SURVEYING, INC.
PLANNING, SURVEYING, PLATTING

13927 156 TH STREET NORTH
JUPITER, FLORIDA 33458
PHONE (306) 747-8046

1102 W N PARK STREET
OKEECHOBEE, FLORIDA 33472
PHONE (813) 763 8006