

A PLAT OF MARTIN PINES RETAIL CENTER

A REPLAT OF A PORTION OF TRACT 1, BLOCK 70,
ST. LUCIE INLET FARMS, PLAT BOOK 1, PAGE 98
PUBLIC RECORDS OF PALM BEACH (NOW MARTIN) COUNTY, FLORIDA
COMMISSIONERS SUBDIVISION OF THE HANSON GRANT

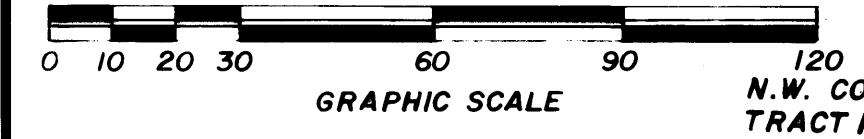
CLERK'S RECORDING CERTIFICATE

I, MARSHA STILLER, CLERK OF THE CIRCUIT COURT OF MARTIN COUNTY, FLORIDA, HEREBY CERTIFY THAT THIS PLAT WAS FILED FOR RECORD IN PLAT BOOK 10, PAGE 94, MARTIN COUNTY, FLORIDA, PUBLIC RECORDS THIS DAY OF 1987.

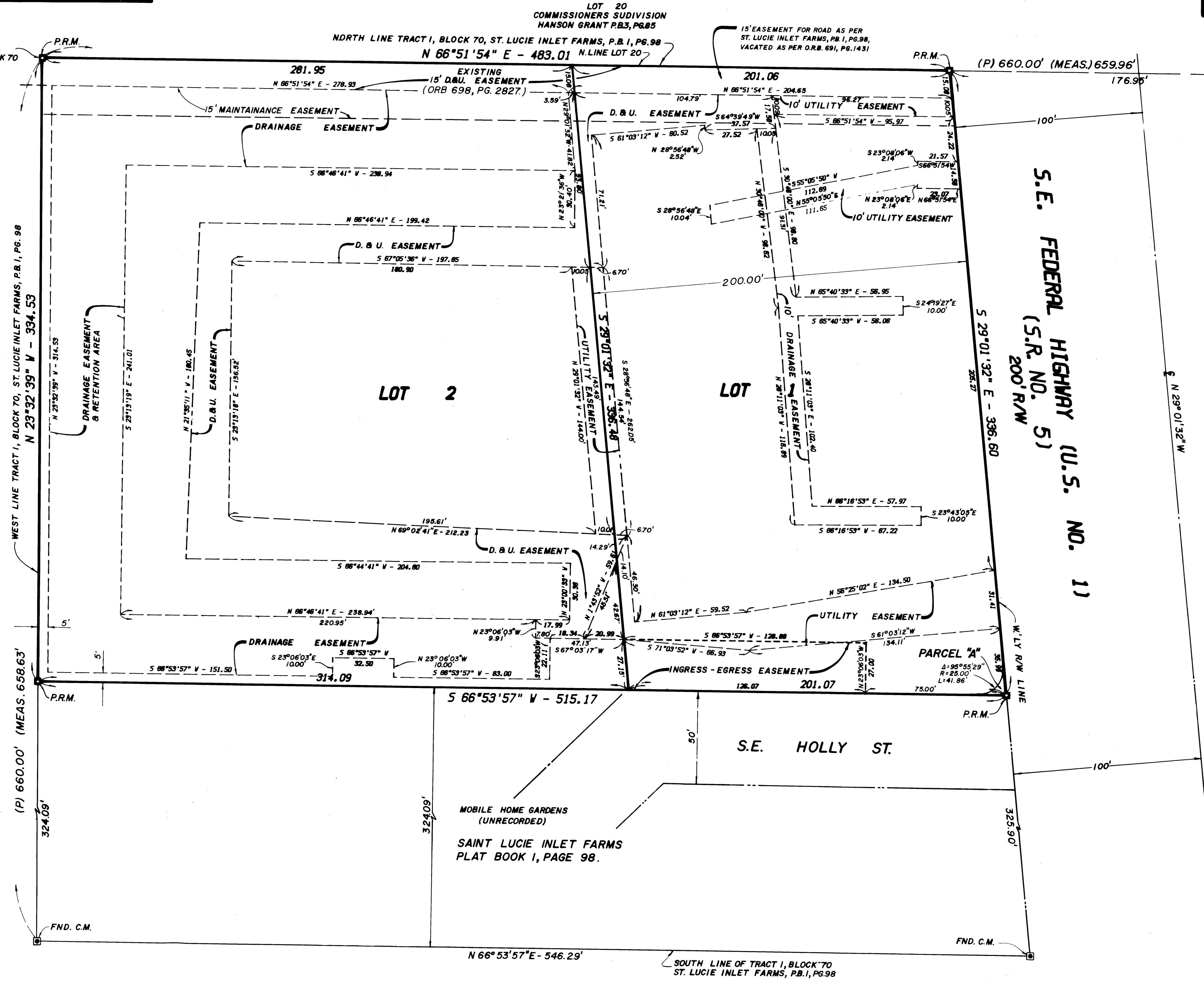
MARSHA STILLER, CLERK OF THE CIRCUIT COURT MARTIN COUNTY, FLORIDA.

FILE NUMBER BY: DEPUTY CLERK

SUBDIVISION PARCEL CONTROL NUMBER



N.W. CORNER, TRACT 1, BLOCK 70



N.E. CORNER TRACT 1, BLOCK 70 FND. C.M.

SAINT LUCIE INLET FARMS
PLAT BOOK 1, PAGE 98.

MOBILE HOME GARDENS
(UNRECORDED)

WEST LINE TRACT 1, BLOCK 70, ST. LUCIE INLET FARMS, P.B. 1, PG. 98
N 29°32'39" W - 394.53

LOT 2

LOT

S.E. FEDERAL HIGHWAY (U.S. NO. 1)
200' R/W

SURVEYOR'S NOTE

- 1.) BEARINGS SHOWN ARE REFERENCED TO THE CENTERLINE OF S.E. FEDERAL HIGHWAY (S.R. No. 5) BEARING NORTH 29°01'32" WEST AS SHOWN ON FLORIDA'S DEPARTMENT OF TRANSPORTATION RIGHT-OF-WAY MAP OF S.R. No. 5, SECTION No. 89010-2114, SHEET 2 OF 9.
- 2.) THERE SHALL BE NO BUILDINGS OR ANY KIND OF CONSTRUCTION OR TREES OR SHRUBS PLACED ON COUNTY DRAINAGE EASEMENT AS RECORDED IN O.R. BOOK 689, PAGE 2827.

LEGEND

- = SET PERMANENT REFERENCE MONUMENT.
- ⊙ = FOUND CONCRETE MONUMENT.
- D.&U. = DRAINAGE AND UTILITY EASEMENT.
- P = PLAT
- MEAS. = MEAS.

MOBILE HOME GARDENS
(UNRECORDED)
SAINT LUCIE INLET FARMS
PLAT BOOK 1, PAGE 98.

G.C.Y., INC.
LAND SURVEYORS
217 E. OCEAN BLVD.
STUART, FLORIDA
PH. (305)-286-8083