

A PLAT OF MONARCH CLUB DRIVE

BEING PLAT NO. 19 "A", MARTIN DOWNS, A P.U.D. BEING A PORTION OF SECTION 7,
TOWNSHIP 38 SOUTH, RANGE 41 EAST AND A REPLAT OF MONARCH CLUB DRIVE
(PLAT 19 MARTIN DOWNS P.U.D.) AS RECORDED IN PLAT BOOK 10 PAGE 72,
AND A REPLAT OF A PORTION OF PLAT 29 MARTIN DOWNS P.U.D. AS RECORDED
IN PLAT BOOK PAGE , PUBLIC RECORDS OF MARTIN COUNTY, FLORIDA

I, Marsha Stiller, Clerk
of the Circuit Court of
Martin County, Florida,
hereby certify that this
Plat was filed for record
in Plat Book 10,
Page 92, Martin County,
Florida, Public Records,
this day of _____,
1987.

Marsha Stiller, Clerk
Circuit Court
Martin County, Florida

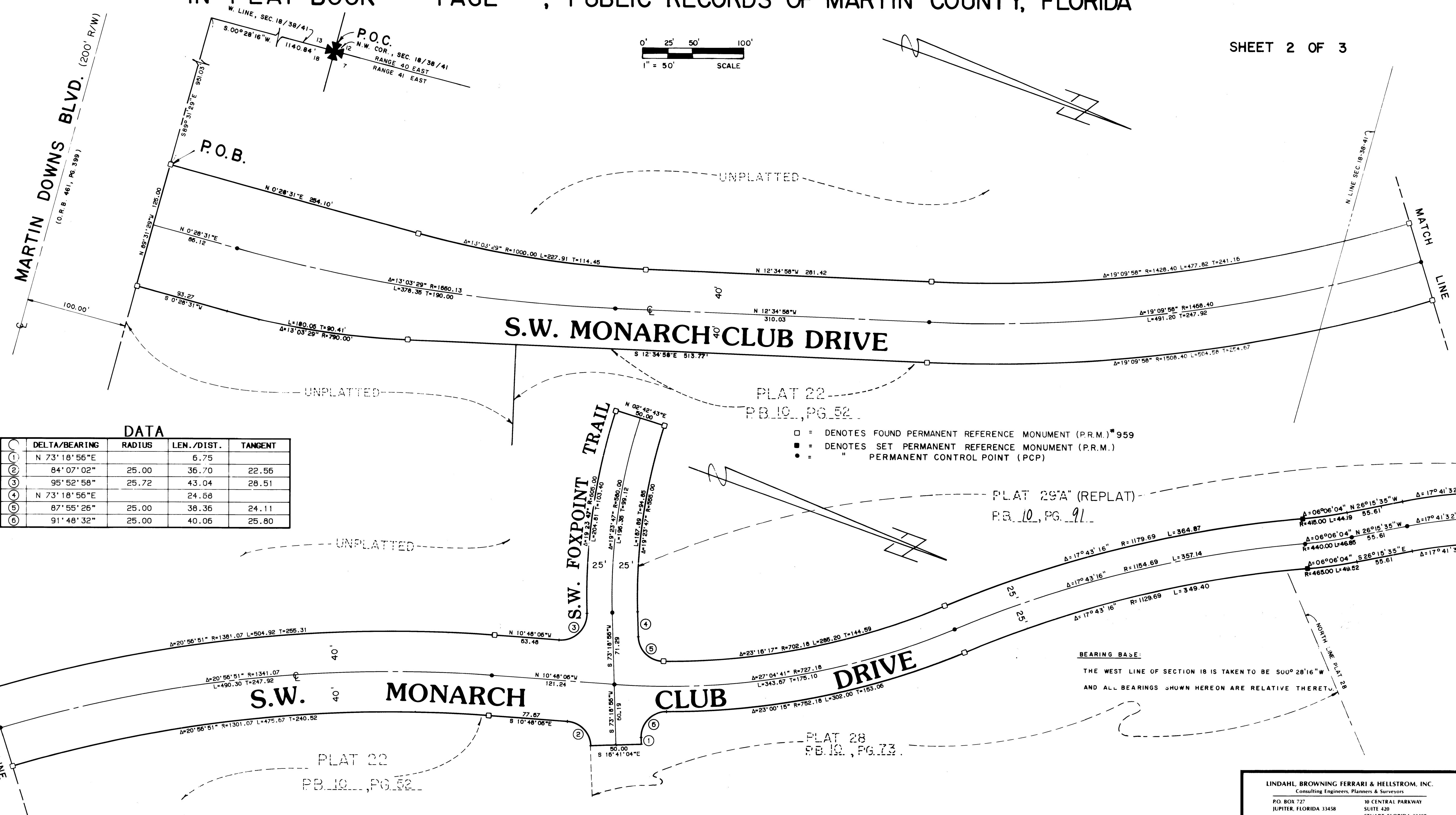
By: _____
Deputy Clerk

File No. _____

(Circuit Court Seal)

AUGUST, 1987

SHEET 2 OF 3



DATA

NO.	DELTA/BEARING	RADIUS	LEN./DIST.	TANGENT
1	N 73° 18' 56" E	6.75	6.75	
2	84° 07' 02"	25.00	36.70	22.56
3	95° 52' 58"	25.72	43.04	28.51
4	N 73° 18' 56" E	24.68	24.68	
5	87° 55' 26"	25.00	38.36	24.11
6	91° 48' 32"	25.00	40.06	25.80

□ = DENOTES FOUND PERMANENT REFERENCE MONUMENT (P.R.M.) 959
 ■ = DENOTES SET PERMANENT REFERENCE MONUMENT (P.R.M.)
 ● = " PERMANENT CONTROL POINT (P.C.P.)

BEARING BASE:
 THE WEST LINE OF SECTION 18 IS TAKEN TO BE S00° 28' 16" W
 AND ALL BEARINGS SHOWN HEREON ARE RELATIVE THERETO

LINDAHL, BROWNING FERRARI & HELLSTROM, INC.
 Consulting Engineers, Planners & Surveyors

PO BOX 722 10 CENTRAL PARKWAY
 JUPITER, FLORIDA 33458 SUITE 420
 STUART, FLORIDA 33497

2 3