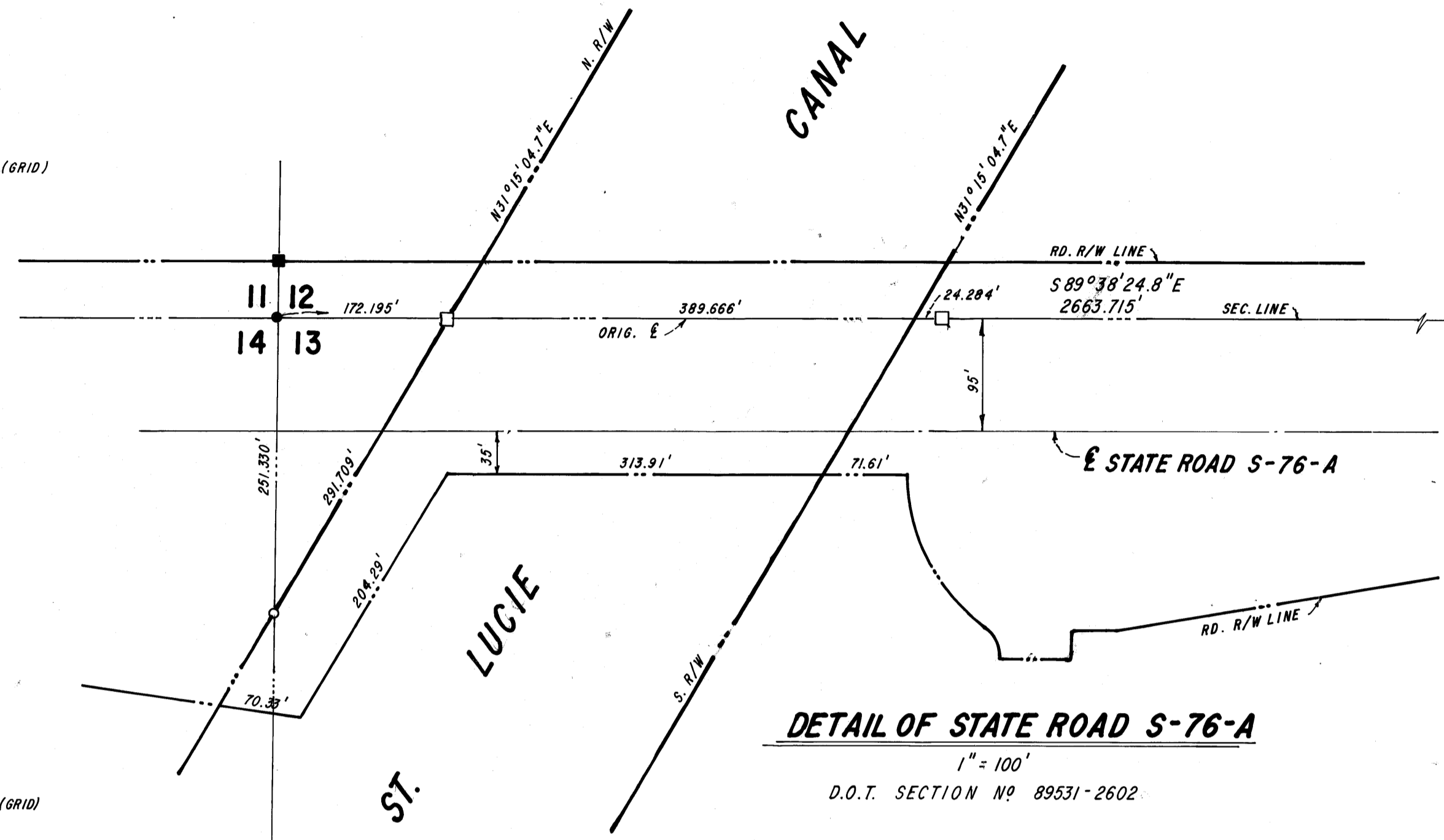
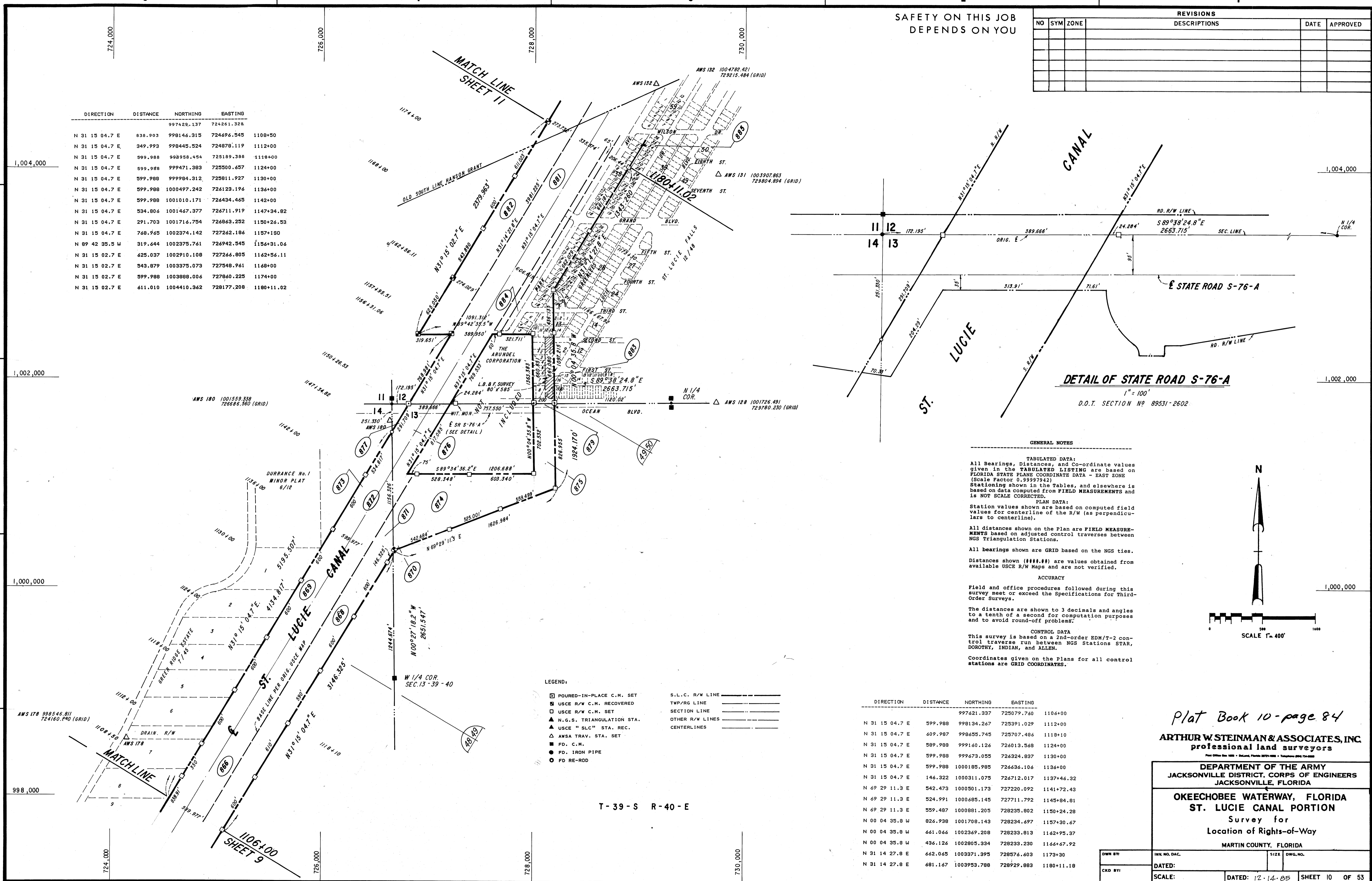


SAFETY ON THIS JOB
DEPENDS ON YOU

REVISIONS					
NO	SYM	ZONE	DESCRIPTIONS	DATE	APPROVED

DIRECTION	DISTANCE	NORTHING	EASTING
N 31 15 04.7 E	838.903	997429.137	724261.328
N 31 15 04.7 E	349.993	998445.524	724878.119
N 31 15 04.7 E	599.988	998958.454	725189.388
N 31 15 04.7 E	599.988	999471.383	725500.657
N 31 15 04.7 E	599.988	999984.312	725811.927
N 31 15 04.7 E	599.988	1000497.242	726123.196
N 31 15 04.7 E	599.988	1001010.171	726434.465
N 31 15 04.7 E	534.806	1001467.377	726745.734
N 31 15 04.7 E	291.703	1001716.754	726863.252
N 31 15 04.7 E	768.965	1002374.142	727262.186
N 89 42 35.5 W	319.644	1002375.761	726942.545
N 31 15 02.7 E	425.037	1002910.108	727266.805
N 31 15 02.7 E	543.879	1003375.073	727548.961
N 31 15 02.7 E	599.988	1003888.004	727860.225
N 31 15 02.7 E	611.010	1004410.362	728177.208



GENERAL NOTES

TABULATED DATA:
All Bearings, Distances, and Co-ordinate values given in the TABULATED LISTING are based on FLORIDA STATE PLANE COORDINATE DATA - EAST ZONE (Scale Factor: 0.99997942). Stationing shown in the Tables, and elsewhere is based on data computed from FIELD MEASUREMENTS and is NOT SCALE CORRECTED.

PLAN DATA:
Station values shown are based on computed field values for centerline of the R/W (as perpendiculars to centerline).

All distances shown on the Plan are FIELD MEASUREMENTS based on adjusted control traverses between NGS Triangulation Stations.

All bearings shown are GRID based on the NGS ties.

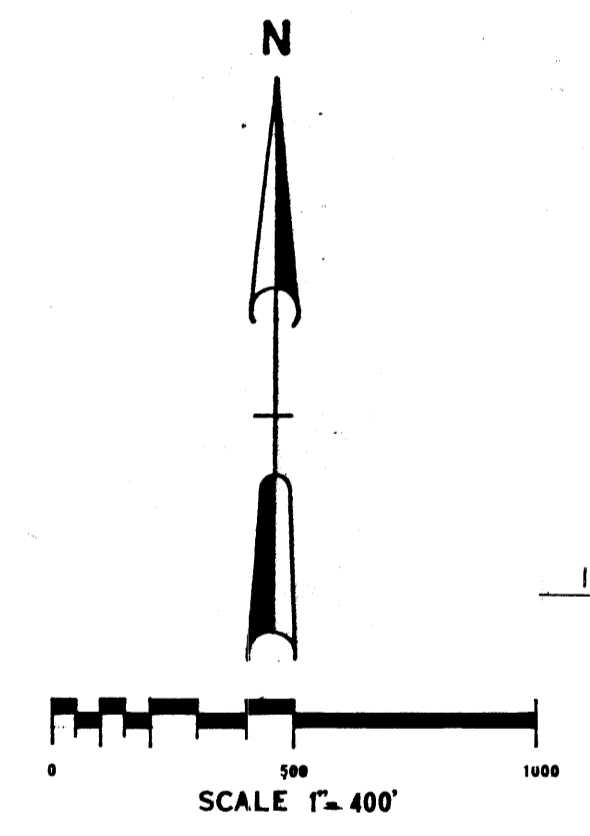
Distances shown (####) are values obtained from available USCE R/W Maps and are not verified.

ACCURACY
Field and office procedures followed during this survey meet or exceed the Specifications for Third-Order Surveys.

The distances are shown to 3 decimals and angles to a tenth of a second for computation purposes and to avoid round-off problems.

CONTROL DATA
This survey is based on a 2nd-order EDM/T-2 control traverse run between NGS Stations STAR, DOROTHY, INDIAN, and ALLEN.

Coordinates given on the Plans for all control stations are GRID COORDINATES.



- LEGEND.**
- POURED-IN-PLACE C.M. SET
 - USCE R/W C.M. RECOVERED
 - USCE R/W C.M. SET
 - ▲ N.G.S. TRIANGULATION STA.
 - ▲ USCE "SLC" STA. REC.
 - ▲ AWSA TRAV. STA. SET
 - FD. C.M.
 - FD. IRON PIPE
 - FD. RE-ROD
- S.L.C. R/W LINE
 - TWP/RG LINE
 - SECTION LINE
 - OTHER R/W LINES
 - CENTERLINES

DIRECTION	DISTANCE	NORTHING	EASTING
N 31 15 04.7 E	599.988	997421.337	725079.740
N 31 15 04.7 E	609.987	998655.745	725707.486
N 31 15 04.7 E	589.988	999160.126	726013.568
N 31 15 04.7 E	599.988	999673.055	726324.837
N 31 15 04.7 E	599.988	1000185.985	726636.106
N 31 15 04.7 E	146.322	1000311.075	726712.017
N 69 29 11.3 E	542.473	1000501.173	727220.092
N 69 29 11.3 E	524.991	1000685.145	727711.792
N 69 29 11.3 E	559.487	1000881.205	728235.802
N 00 04 35.8 W	826.938	1001708.143	728234.697
N 00 04 35.8 W	461.046	1002369.208	728233.813
N 00 04 35.8 W	436.126	1002805.334	728233.230
N 31 14 27.8 E	662.065	1003371.395	728576.603
N 31 14 27.8 E	681.167	1003953.788	728929.883

Plat Book 10 - page 84
ARTHUR W. STEINMAN & ASSOCIATES, INC.
professional land surveyors

DEPARTMENT OF THE ARMY
JACKSONVILLE DISTRICT, CORPS OF ENGINEERS
JACKSONVILLE, FLORIDA

OKEECHOBEE WATERWAY, FLORIDA
ST. LUCIE CANAL PORTION
Survey for
Location of Rights-of-Way

DWG. NO.	120B-34,724	DATE	12-14-85	SHEET	10 OF 53
----------	-------------	------	----------	-------	----------

T-39-S R-40-E

D.O. FILE NO. 120B-34,724

BR 10-68-84
12-18-85