

SAFETY ON THIS JOB  
DEPENDS ON YOU

REVISIONS					
NO	SYM	ZONE	DESCRIPTIONS	DATE	APPROVED

DIRECTION	DISTANCE	NORTHING	EASTING
N 68 08 21.7 E	292.038	981793.781	694953.483
N 68 10 35.9 E	664.807	982139.661	695841.885
N 68 10 35.9 E	669.986	982388.726	696463.857
N 68 10 35.9 E	665.704	982636.199	697081.852
N 68 08 33.8 E	664.243	982883.494	697698.346
N 68 08 33.8 E	669.986	983132.927	698320.170
N 68 08 33.8 E	666.089	983380.909	698938.376
N 68 08 58.1 E	700.883	983641.748	699588.906
N 68 08 58.1 E	713.687	983907.393	700251.321
N 68 08 58.1 E	585.728	984125.393	700794.969
N 68 08 42.9 E	663.494	984372.382	701410.778
N 68 08 42.9 E	669.986	984621.788	702032.613
N 68 08 42.9 E	666.681	984869.963	702651.380
N 68 09 12.1 E	600.016	985093.243	703280.305
N 68 09 12.1 E	599.988	985314.513	703765.203
N 68 09 12.1 E	644.307	985554.274	704363.238
N 68 09 12.1 E	555.669	985743.032	704879.000
N 68 09 12.1 E	346.261	985891.903	705200.394
N 68 09 12.1 E	349.264	986021.873	705524.574
N 68 09 12.1 E	674.911	986273.023	706151.013

**GENERAL NOTES**

**TABULATED DATA:**  
All Bearings, Distances, and Co-ordinate values given in the TABULATED LISTING are based on FLORIDA STATE PLANE COORDINATE DATA - EAST ZONE (Scale Factor 0.99997942). Stationing shown in the Tables, and elsewhere is based on data computed from FIELD MEASUREMENTS and is NOT SCALE CORRECTED.

**PLAN DATA:**  
Station values shown are based on computed field values for centerline of the R/W (as perpendicular to centerline).

All distances shown on the Plan are FIELD MEASUREMENTS based on adjusted control traverses between NGS Triangulation Stations.

All bearings shown are GRID based on the NGS ties.

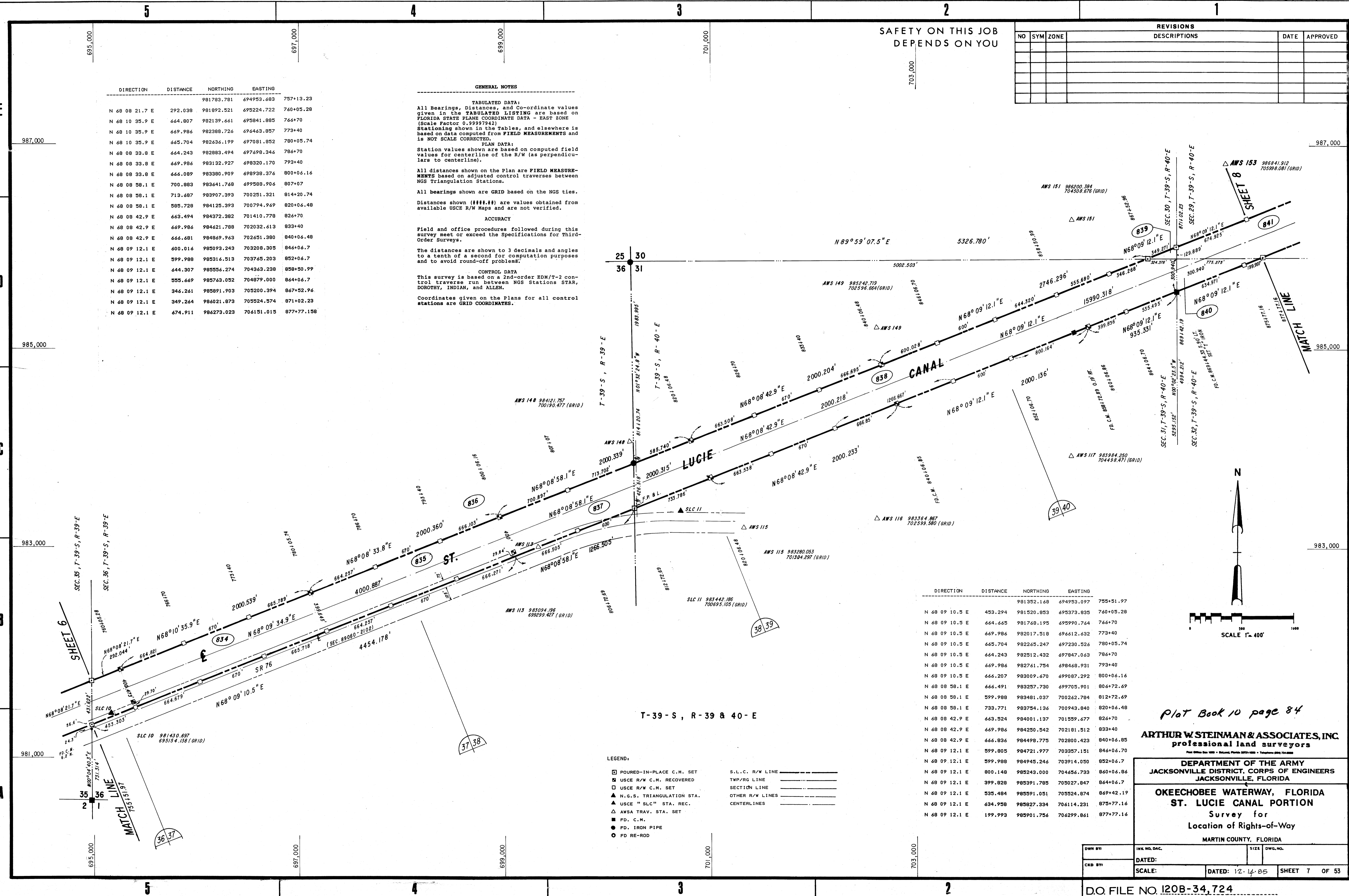
Distances shown (####.##) are values obtained from available USCE R/W Maps and are not verified.

**ACCURACY**  
Field and office procedures followed during this survey meet or exceed the Specifications for Third-Order Surveys.

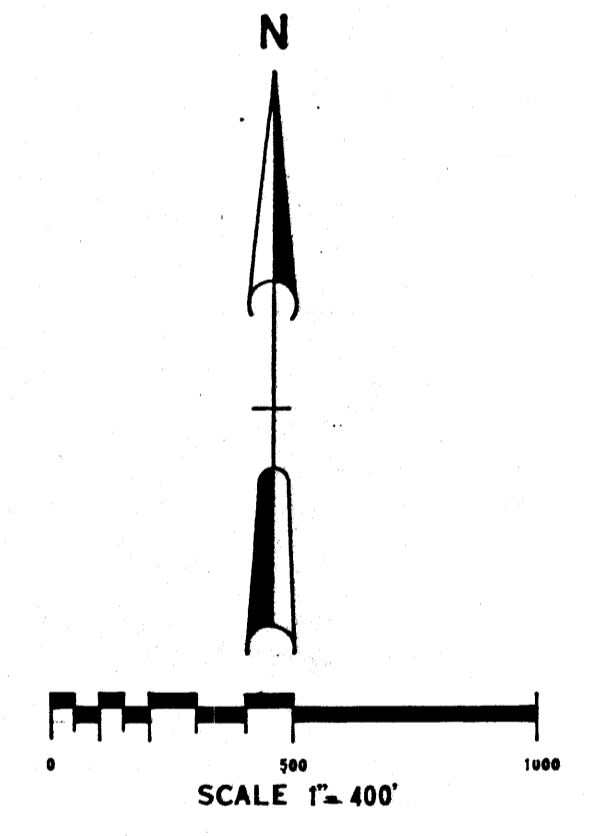
The distances are shown to 3 decimals and angles to a tenth of a second for computation purposes and to avoid round-off problems.

**CONTROL DATA**  
This survey is based on a 2nd-order EDM/T-2 control traverse run between NGS Stations STAR, DOROTHY, INDIAN, and ALLEN.

Coordinates given on the Plans for all control stations are GRID COORDINATES.



DIRECTION	DISTANCE	NORTHING	EASTING
N 68 09 10.5 E	433.294	981352.168	694953.097
N 68 09 10.5 E	664.665	981768.195	695990.744
N 68 09 10.5 E	669.986	982017.518	696612.632
N 68 09 10.5 E	665.704	982265.247	697230.526
N 68 09 10.5 E	664.243	982512.432	697847.063
N 68 09 10.5 E	669.986	982761.754	698468.931
N 68 09 10.5 E	666.207	983009.670	699087.292
N 68 08 58.1 E	666.491	983257.730	699705.901
N 68 08 58.1 E	733.771	983754.136	700943.840
N 68 08 42.9 E	663.524	984001.137	701559.677
N 68 08 42.9 E	669.986	984250.542	702181.512
N 68 08 42.9 E	666.836	984498.775	702800.423
N 68 09 12.1 E	599.805	984721.977	703357.151
N 68 09 12.1 E	599.988	984945.246	703914.050
N 68 09 12.1 E	800.148	985243.000	704656.793
N 68 09 12.1 E	399.828	985391.785	705027.847
N 68 09 12.1 E	535.484	985591.051	705524.874
N 68 09 12.1 E	634.958	985827.334	706114.231
N 68 09 12.1 E	199.993	985901.756	706299.861



- LEGEND:**
- ☐ POURED-IN-PLACE C.M. SET
  - ☐ USCE R/W C.M. RECOVERED
  - ☐ USCE R/W C.M. SET
  - ▲ N.G.S. TRIANGULATION STA.
  - ▲ USCE "SLC" STA. REC.
  - ▲ AWSA TRAV. STA. SET
  - FD. C.M.
  - FD. IRON PIPE
  - FD. RE-ROD
  - S.L.C. R/W LINE
  - TWP/RG LINE
  - SECTION LINE
  - OTHER R/W LINES
  - CENTERLINES

Plot Book 10 page 84

**ARTHUR W. STEINMAN & ASSOCIATES, INC.**  
Professional land surveyors

DEPARTMENT OF THE ARMY  
JACKSONVILLE DISTRICT, CORPS OF ENGINEERS  
JACKSONVILLE, FLORIDA

**OKEECHOBEE WATERWAY, FLORIDA**  
ST. LUCIE CANAL PORTION  
Survey for  
Location of Rights-of-Way

MARTIN COUNTY, FLORIDA

DWN BY:	INW. NO. DAC:	SIZE:	DWG. NO.:
CRD BY:	DATED:	DATED: 12-14-85 SHEET 7 OF 53	
SCALE:		DATED: 12-14-85 SHEET 7 OF 53	