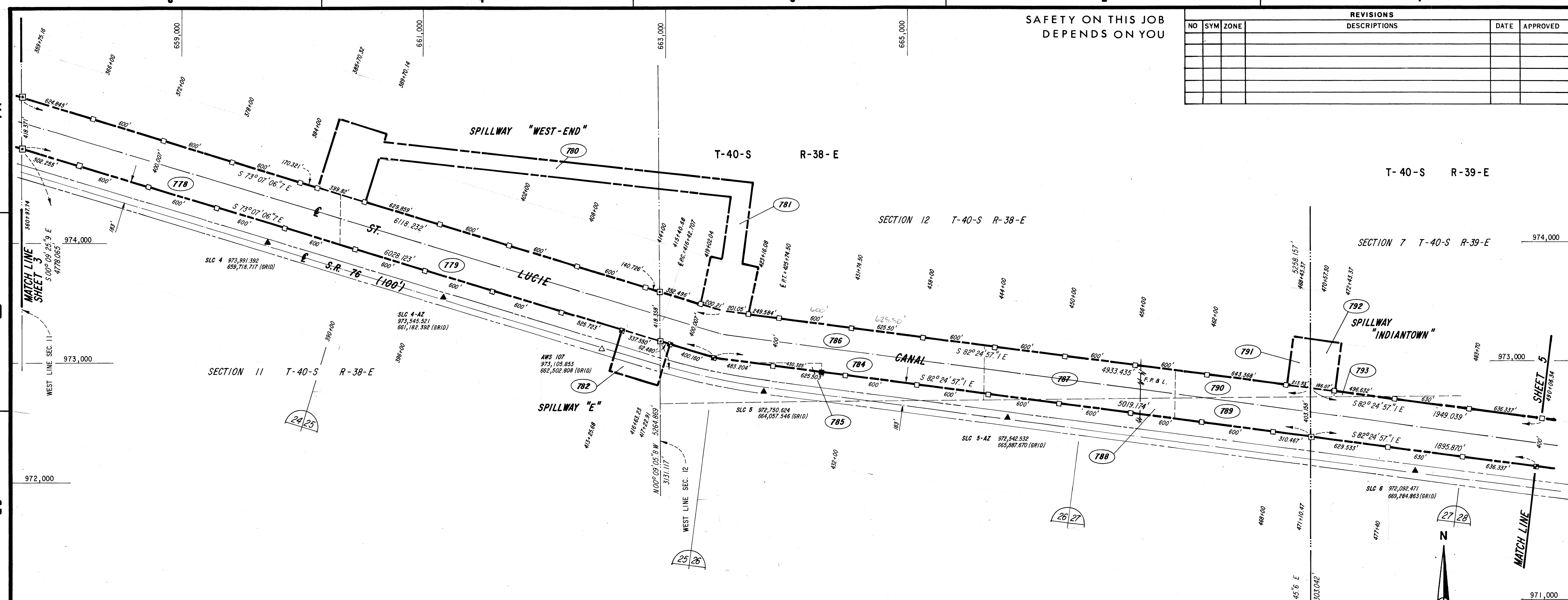


SAFETY ON THIS JOB  
DEPENDS ON YOU

REVISIONS					
NO	SYM	ZONE	DESCRIPTIONS	DATE	APPROVED



NORTH R/W				SOUTH R/W			
DIRECTION	DISTANCE	NORTHING	EASTING	DIRECTION	DISTANCE	NORTHING	EASTING
		975202.824	657668.406			974784.464	657669.554
S 73° 07' 06.7" E	424.831	975021.378	658266.312	S 73° 07' 06.7" E	502.244	974638.616	658150.156
S 73° 07' 06.7" E	599.987	974847.146	658840.444	S 73° 07' 06.7" E	599.987	974464.384	658724.288
S 73° 07' 06.7" E	599.987	974672.914	659414.576	S 73° 07' 06.7" E	599.987	974290.132	659298.420
S 73° 07' 06.7" E	599.987	974498.682	659988.708	S 73° 07' 06.7" E	599.987	974115.920	659872.552
S 73° 07' 06.7" E	170.317	974449.223	660151.686	S 73° 07' 06.7" E	599.987	973941.688	660446.684
S 73° 07' 06.7" E	399.811	974333.121	660534.269	S 73° 07' 06.7" E	599.987	973767.456	661020.816
S 73° 07' 06.7" E	629.800	974150.232	661136.929	S 73° 07' 06.7" E	599.987	973593.224	661594.948
S 73° 07' 06.7" E	599.987	973976.000	661711.061	S 73° 07' 06.7" E	599.987	973418.993	662169.080
S 73° 07' 06.7" E	599.987	973801.768	662285.193	S 73° 07' 06.7" E	525.667	973266.343	662672.095
S 73° 07' 06.7" E	599.987	973627.536	662859.325	S 73° 07' 06.7" E	337.543	973168.323	662995.092
S 73° 07' 06.7" E	140.723	973586.471	662993.984	S 73° 07' 06.7" E	62.479	973150.179	663054.878
S 73° 07' 06.7" E	352.488	973484.311	663331.283	S 73° 07' 06.7" E	400.151	973033.978	663437.786
S 73° 07' 06.7" E	200.206	973426.173	663522.861	S 82° 24' 57.1" E	483.194	972970.205	663916.754
S 82° 24' 57.1" E	201.046	973399.638	663722.148	S 82° 24' 57.1" E	625.491	972887.652	664536.773
S 82° 24' 57.1" E	249.579	973366.698	663969.544	S 82° 24' 57.1" E	599.988	972808.464	665131.512
S 82° 24' 57.1" E	599.988	973287.511	664564.284	S 82° 24' 57.1" E	599.988	972729.277	665726.252
S 82° 24' 57.1" E	625.491	973204.957	665184.303	S 82° 24' 57.1" E	599.988	972650.089	666320.991
S 82° 24' 57.1" E	599.988	973125.770	665779.043	S 82° 24' 57.1" E	599.988	972570.901	666915.731
S 82° 24' 57.1" E	599.988	973046.582	666373.782	S 82° 24' 57.1" E	599.988	972491.714	667510.470
S 82° 24' 57.1" E	599.988	972967.394	666968.522	S 82° 24' 57.1" E	599.988	972412.526	668105.210
S 82° 24' 57.1" E	599.988	972888.207	667563.262	S 82° 24' 57.1" E	310.461	972371.551	668412.955
S 82° 24' 57.1" E	643.355	972803.295	668200.989	S 82° 24' 57.1" E	629.521	972288.465	669036.969
S 82° 24' 57.1" E	213.926	972775.061	668413.044	S 82° 24' 57.1" E	629.988	972205.318	669661.445
S 82° 24' 57.1" E	186.066	972750.503	668597.482	S 82° 24' 57.1" E	636.324	972121.335	670292.203
S 82° 24' 57.1" E	496.622	972684.958	669089.760	S 82° 24' 57.1" E	400.092	972068.530	670688.795
S 82° 24' 57.1" E	629.988	972601.811	669714.237				
S 82° 24' 57.1" E	636.325	972517.828	670344.995				

**GENERAL NOTES**

**TABULATED DATA:**  
All Bearings, Distances, and Co-ordinate values given in the TABULATED LISTING are based on FLORIDA STATE PLANE COORDINATE DATA - EAST ZONE (Scale Factor 0.99997942). Stationing shown in the Tables, and elsewhere is based on data computed from FIELD MEASUREMENTS and is NOT SCALE CORRECTED.

**PLAN DATA:**  
Station values shown are based on computed field values for centerline of the R/W (as perpendiculars to centerline).

All distances shown on the Plan are FIELD MEASUREMENTS based on adjusted control traverses between NGS Triangulation Stations.

All bearings shown are GRID based on the NGS ties.

Distances shown (###.##) are values obtained from available USCE R/W Maps and are not verified.

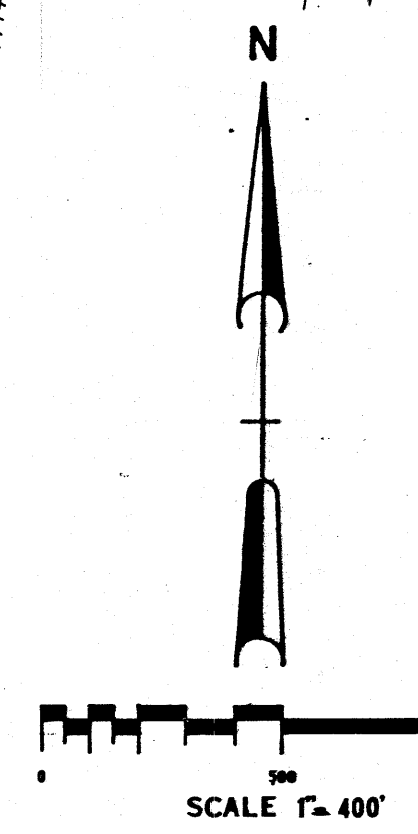
**ACCURACY**  
Field and office procedures followed during this survey meet or exceed the Specifications for Third-Order Surveys.

The distances are shown to 3 decimals and angles to a tenth of a second for computation purposes and to avoid round-off errors.

**CONTROL DATA**  
This survey is based on a 2nd-order EDM/T-2 control traverse run between NGS Stations STAR, DOROTHY, INDIAN, and ALLEN.

Coordinates given on the Plans for all control stations are GRID COORDINATES.

- LEGEND:**
- POURED-IN-PLACE C.M. SET
  - USCE R/W C.M. RECOVERED
  - USCE R/W C.M. SET
  - ▲ N.G.S. TRIANGULATION STA.
  - ▲ USCE "SLC" STA. REC.
  - ▲ AWSA TRAV. STA. SET
  - PD. C.M.
  - PD. IRON PIPE
  - PD. RE-ROD
- S.L.C. R/W LINE: ————  
 TWP/RG LINE: ————  
 SECTION LINE: ————  
 OTHER R/W LINES: - - - - -  
 CENTERLINES: ————



Plat Book 10 page 84  
**ARTHUR W. STEINMAN & ASSOCIATES, INC.**  
 professional land surveyors

DEPARTMENT OF THE ARMY  
 JACKSONVILLE DISTRICT, CORPS OF ENGINEERS  
 JACKSONVILLE, FLORIDA

**OKEECHOBEE WATERWAY, FLORIDA**  
**ST. LUCIE CANAL PORTION**  
 Survey for  
 Location of Rights-of-Way  
 MARTIN COUNTY, FLORIDA

DWN BY	JWK NO. DAC	SIZE	DWG. NO.
CKD BY	DATED:		
	SCALE:	DATED: 12-14-85	SHEET 4 OF 53

DO FILE NO. 120B-34,724