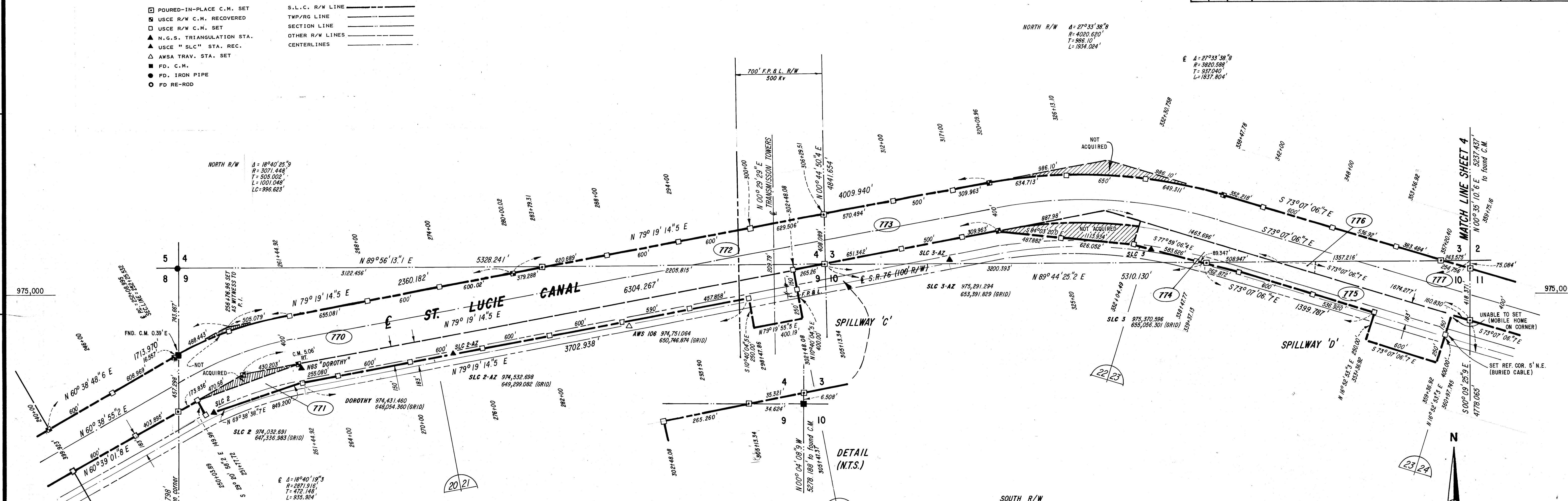


SAFETY ON THIS JOB
DEPENDS ON YOU

REVISIONS					
NO	SYM	ZONE	DESCRIPTIONS	DATE	APPROVED

- LEGEND:
- POURED-IN-PLACE C.M. SET
 - USCE R/W C.M. RECOVERED
 - USCE R/W C.M. SET
 - N.G.S. TRIANGULATION STA.
 - USCE "SLC" STA. REC.
 - AWSA TRAV. STA. SET
 - FD. C.M.
 - FD. IRON PIPE
 - FD RE-ROD
 - S.L.C. R/W LINE
 - TWP/RG LINE
 - SECTION LINE
 - OTHER R/W LINES
 - CENTERLINES



NORTH R/W

DIRECTION	DISTANCE	NORTHING	EASTING	
		973903.415	645966.609	240+00
N 60° 38' 48.6" E	599.988	974197.723	646489.567	246+00
N 60° 38' 48.6" E	608.756	974476.229	647020.342	252+00
N 60° 38' 48.6" E	16.557	974504.344	647034.774	252+25.53
N 60° 38' 48.6" E	488.433	974743.770	647460.499	P.1.
N 79° 19' 14.5" E	505.069	974837.365	647956.820	261+44.92
N 79° 19' 14.5" E	655.070	974998.757	648600.544	268+00
N 79° 19' 14.5" E	599.988	975059.942	649190.140	274+00
N 79° 19' 14.5" E	600.006	975181.130	649779.754	280+00.02
N 79° 19' 14.5" E	379.280	975251.416	650152.465	283+79.31
N 79° 19' 14.5" E	420.680	975329.373	650545.860	288+00
N 79° 19' 14.5" E	599.988	975440.557	651155.455	294+00
N 79° 19' 14.5" E	599.988	975551.742	651745.051	300+00
N 79° 19' 14.5" E	629.493	975668.394	652363.641	306+29.50
N 79° 19' 14.5" E	570.482	975774.111	652924.243	312+00
N 79° 19' 14.5" E	499.990	975866.765	653415.572	317+00
N 79° 19' 14.5" E	309.957	975924.204	653720.161	320+09.96
N 89° 50' 35.5" E	634.041	975992.205	654350.545	326+13.1
S 87° 00' 10.6" E	649.279	975958.258	654978.935	332+30.76
S 77° 44' 42.1" E	648.393	975920.586	655632.748	338+47.78
S 73° 07' 06.7" E	352.211	975718.306	655969.782	342+00
S 73° 07' 06.7" E	599.988	975544.074	656543.914	348+00
S 73° 07' 06.7" E	536.904	975388.161	657057.682	353+36.92
S 73° 07' 06.7" E	383.476	975276.802	657424.633	359+20.4
S 73° 07' 06.7" E	254.751	975202.824	657668.406	359+75.16

T-40-S R-38-E

GENERAL NOTES

Tabulated Data: All Bearings, Distances, and Co-ordinate values given in the TABULATED LISTING are based on FLORIDA STATE PLANE COORDINATE DATA - EAST ZONE (Scale Factor 0.99997942).

STATIONING shown in the tables and elsewhere are based on data computed on FIELD MEASUREMENTS and are NOT SCALE CORRECTED.

PLAN DATA: Station values shown are based on computed field values for centerline of the R/W (as perpendiculars to centerline).

All distances shown on the plan are FIELD MEASUREMENTS based on adjusted control traverses between NGS Triangulation Stations.

All bearings shown are GRID based on the NGS ties.

Distances shown (###.###) are values obtained from available USCE R/W Maps and are not verified.

ACCURACY: Field and office procedures followed during this survey meet or exceed the Specifications for Third-Order Surveys.

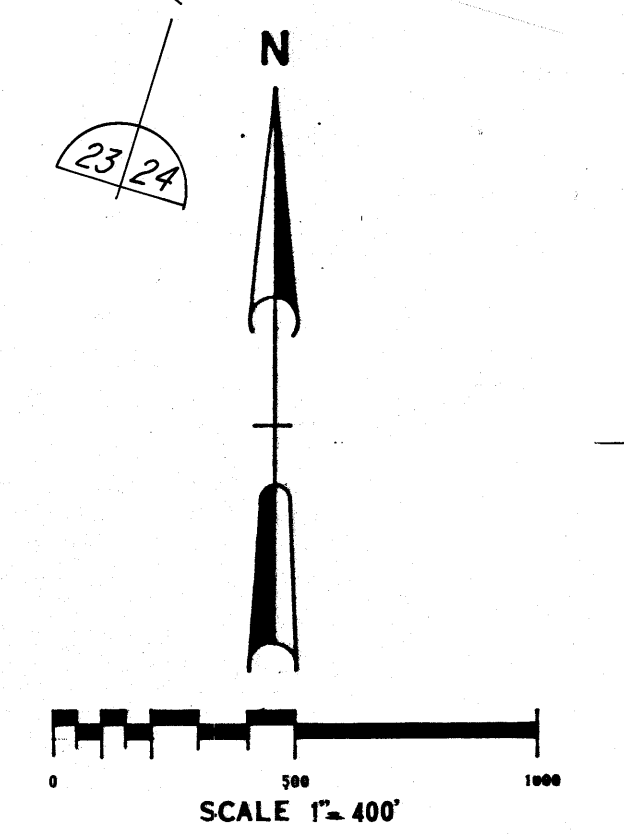
The distances are shown to 3 decimals and angles to a tenth of a second for computation purposes and to avoid round-off problems.

CONTROL DATA: This survey is based on a 2nd-order control traverse run between NGS Stations STAR, DOROTHY, INDIAN, and ALLEN.

Coordinates given on the plans for all control stations are GRID COORDINATES.

SOUTH R/W

DIRECTION	DISTANCE	NORTHING	EASTING	
		973555.030	646162.622	240+00
N 60° 39' 01.8" E	599.981	973849.102	646685.593	246+00
N 60° 39' 01.8" E	403.882	974047.060	647037.636	250+03.89
N 60° 39' 01.8" E	173.831	974132.260	647189.154	251+77.724
S 29° 20' 58.2" E	149.987	974001.525	647262.669	251+77.724
N 69° 38' 38.7" E	849.174	974296.910	648058.812	261+44.92
N 79° 19' 14.5" E	255.072	974344.178	648309.466	264+00
N 79° 19' 14.5" E	599.982	974455.362	648899.056	270+00
N 79° 19' 14.5" E	599.982	974566.546	649488.647	276+00
N 79° 19' 14.5" E	599.982	974677.729	650078.237	282+00
N 79° 19' 14.5" E	599.982	974788.913	650667.827	288+00
N 79° 19' 14.5" E	589.982	974898.244	651247.591	293+90
N 79° 19' 14.5" E	457.844	974983.088	651697.505	298+47.86
N 79° 19' 14.5" E	400.178	975057.245	652090.752	302+48.08
N 10° 40' 04.5" W	149.996	975204.649	652062.985	302+48.08
N 79° 19' 14.5" E	265.252	975253.803	652323.643	305+13.34
N 79° 19' 14.5" E	35.320	975260.349	652398.351	305+47.37
N 79° 19' 14.5" E	651.323	975381.046	652998.393	312+00
N 79° 19' 14.5" E	499.985	975473.699	653489.718	317+00
N 79° 19' 14.5" E	309.954	975531.137	653794.303	320+09.96
S 84° 03' 20.0" E	487.868	975480.412	654279.548	325+00
S 84° 03' 20.0" E	626.034	975415.777	654902.216	332+04.49
S 77° 59' 06.4" E	583.610	975294.289	655473.042	338+47.77
S 73° 07' 06.7" E	89.345	975268.344	655558.536	339+37.13
S 73° 07' 06.7" E	262.865	975192.010	655810.074	342+00
S 73° 07' 06.7" E	599.984	975017.779	656384.203	348+00
S 73° 07' 06.7" E	536.906	974861.866	656897.972	353+36.92
S 73° 07' 06.7" E	599.984	974687.635	657472.101	359+36.92
N 16° 52' 53.3" E	149.996	974831.167	657515.659	359+36.92
S 73° 07' 06.7" E	160.826	974784.464	657669.554	360+97.74



Plat Book 10 page 84

ARTHUR W. STEINMAN & ASSOCIATES, INC.
Professional land surveyors

DEPARTMENT OF THE ARMY
JACKSONVILLE DISTRICT, CORPS OF ENGINEERS
JACKSONVILLE, FLORIDA

OKEECHOBEE WATERWAY, FLORIDA
ST. LUCIE CANAL PORTION
Survey for
Location of Rights-of-Way
MARTIN COUNTY, FLORIDA

DWN BY	INK NO. DAC	SIZE	DWG. NO.
CRD BY	DATED:	DATED: 12-14-85	SHEET 3 OF 53
SCALE:			

D.O. FILE NO. 120B-34,724