

MAY, 1987  
SHEET 2 OF 2

# PLAT NO. 31

BEING PARCEL NO. 16

# MARTIN DOWNS P.U.D.

LYING IN SECTION 7, TWP. 38 S., RNGE 41 E.,  
& SECTION 18, TWP. 38 S., RNGE. 41 E.,  
MARTIN COUNTY, FLORIDA

PLAT NO. 22  
(PARCEL 15)  
PLAT BOOK 10 PAGE 52

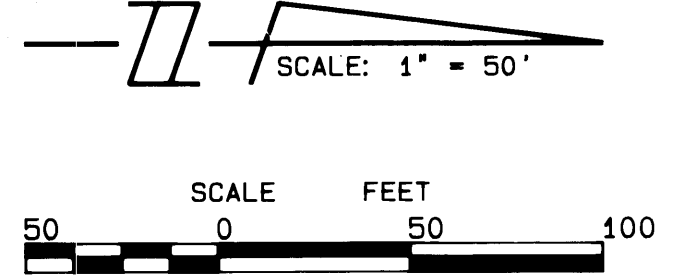
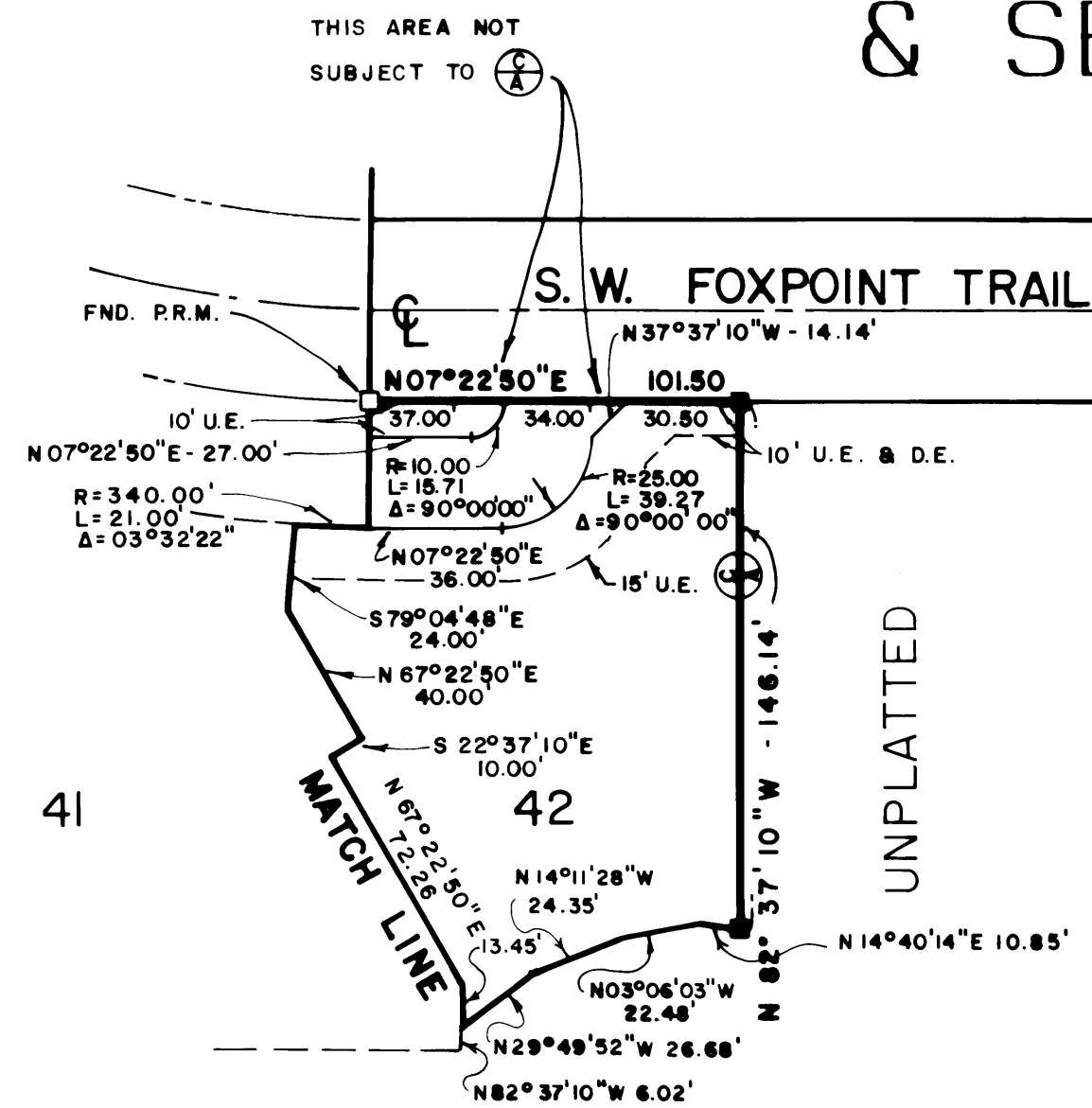
POINT OF BEGINNING

I, Marsha Stiller, Clerk of the Circuit Court of Martin County, Florida, hereby certify that this Plat was filed for record in Plat Book 10, Page 81, Martin County, Florida, Public Records, this 19<sup>th</sup> day of June, 1987.

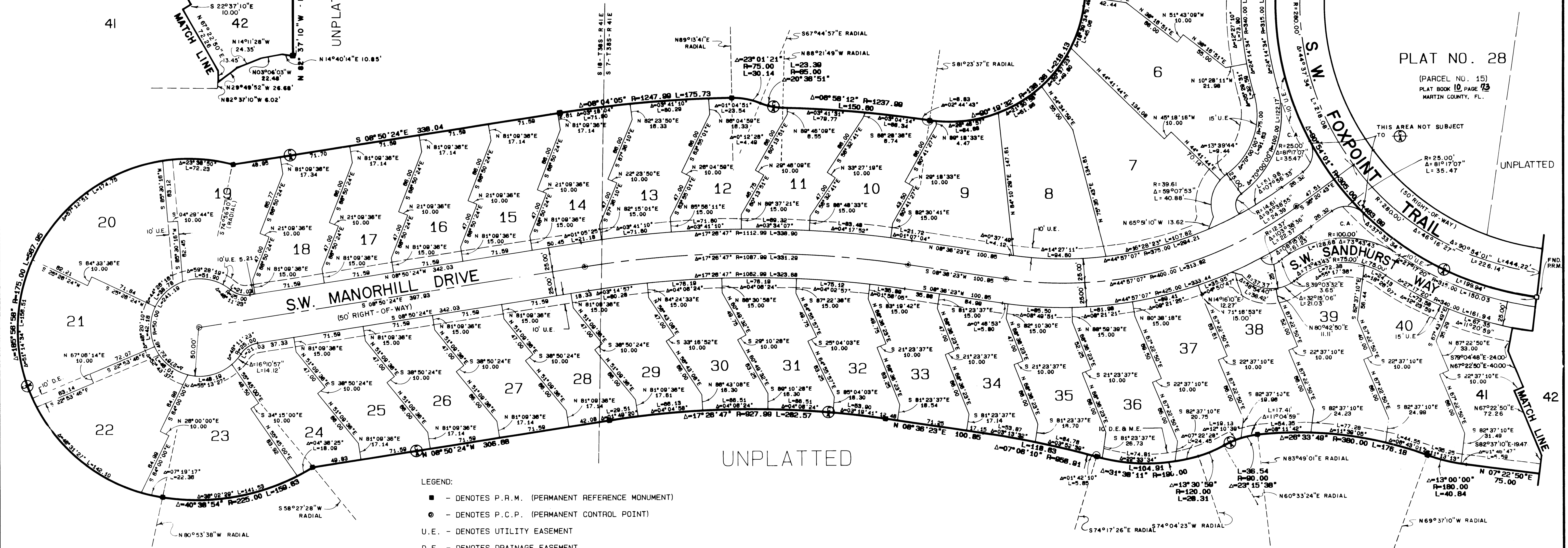
Marsha Stiller, Clerk  
Circuit Court  
Martin County, Florida.

By: Deputy Clerk

File No. 661969  
(Circuit Court Seal)



PLAT NO. 28  
(PARCEL NO. 15)  
PLAT BOOK 10 PAGE 73  
MARTIN COUNTY, FL.



- LEGEND:
- - DENOTES P.R.M. (PERMANENT REFERENCE MONUMENT)
  - - DENOTES P.C.P. (PERMANENT CONTROL POINT)
  - U.E. - DENOTES UTILITY EASEMENT
  - D.E. - DENOTES DRAINAGE EASEMENT
  - C.A. - DENOTES COMMON AREA
  - ⊕ - DENOTES "CONTROL OF ACCESS" NO VEHICULAR ACCESS WITHOUT APPROVAL OF MONARCH COUNTRY CLUB HOMEOWNERS ASSOCIATION, INC. AND MARTIN COUNTY BOARD OF COUNTY COMMISSIONERS.

BEARING BASE:  
THE WEST LINE OF SECTION 7 IS TAKEN TO BE N 00°22'35"E.  
AND ALL BEARINGS SHOWN HEREON ARE RELATIVE THERETO.

LINDAHL, BROWNING FERRARI & HELLSTROM, INC.  
Consulting Engineers, Planners & Surveyors  
P.O. BOX 727 JUPITER, FLORIDA 33458  
10 CENTRAL PARKWAY SUITE 420 STUART, FLORIDA 33497