

# A PLAT OF WELLESLEY

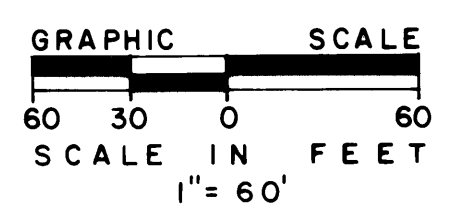
## AT SUNSET TRACE, PHASE I BEING PLAT NO. 33 OF MARTIN DOWNS, A P.U.D. LYING IN SECTION 13, TOWNSHIP 38 SOUTH, RANGE 40 EAST, MARTIN COUNTY, FLORIDA

I, MARSHA STILLER, Clerk of the Circuit Court of Martin County, Florida, hereby certify that this plat was filed for record in Plat Book 10, Page 80, Martin County, Florida, public records, this 16 day of June, 1987.

MARSHA STILLER, CLERK  
CIRCUIT COURT  
MARTIN COUNTY, FLORIDA

File No. 661339

By: Deputy Clerk



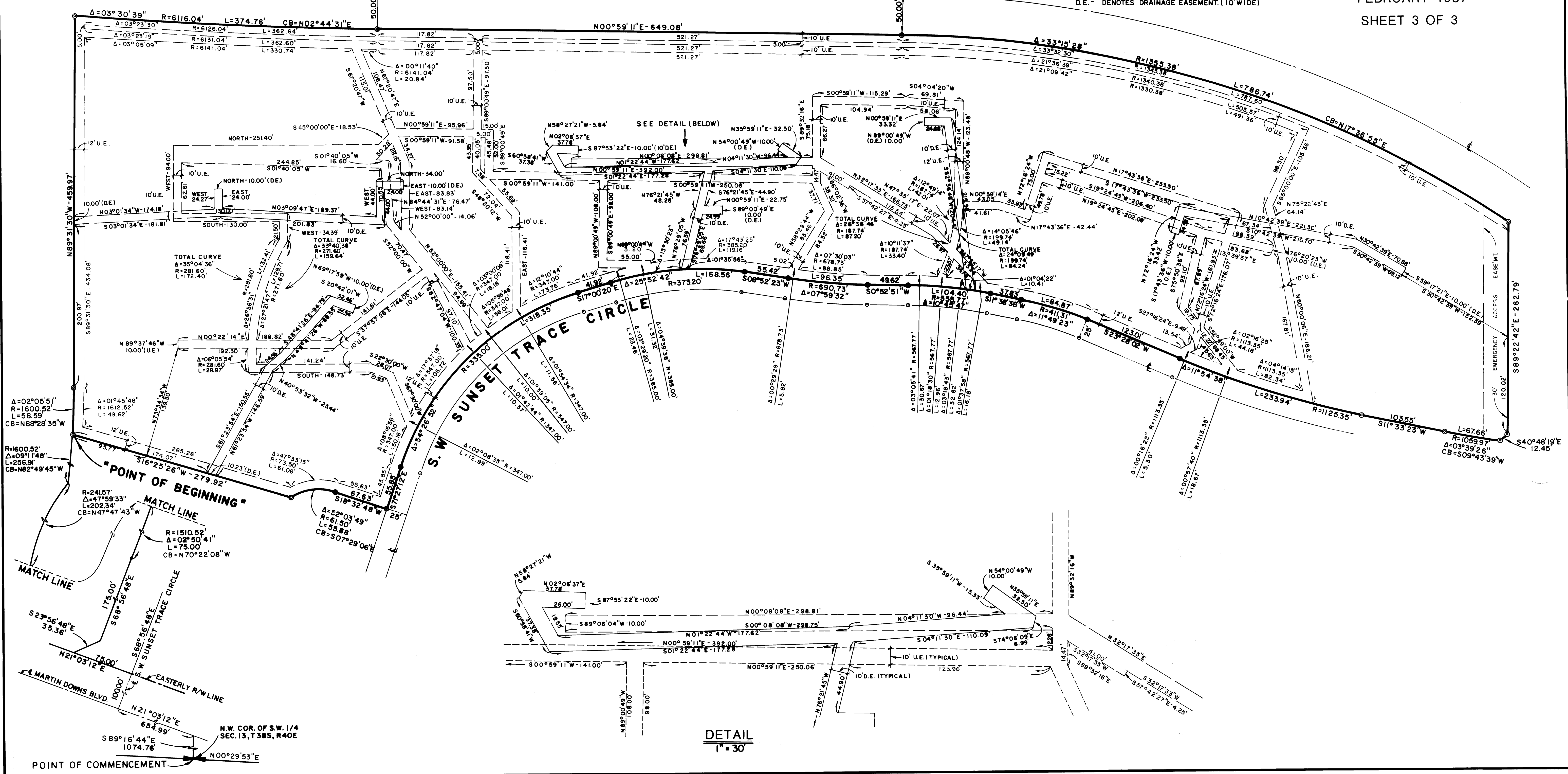
NOTE:  
Bearings shown hereon are based on the plat of SUNSET TRACE, PHASE I being Plat No. 6 of MARTIN DOWNS P.U.D., Plat Book 9, Page 52, Public Records of Martin County, Florida.

- LEGEND
- - DENOTES PERMANENT REFERENCE MONUMENT (P.R.M.) FOUND
  - - DENOTES PERMANENT REFERENCE MONUMENT (P.R.M.) SET
  - - DENOTES PERMANENT CONTROL POINT (P.C.P.)
  - U.E. - DENOTES UTILITY EASEMENT (10' WIDE)
  - D.E. - DENOTES DRAINAGE EASEMENT (10' WIDE)

**Hutcheon Engineers**  
CIVIL ENGINEERS & SURVEYORS  
WEST PALM BEACH  
BELLE GLADE STUART

FEBRUARY 1987  
SHEET 3 OF 3

### PROPOSED S.W. HIGH MEADOW AVENUE



POINT OF COMMENCEMENT

DETAIL  
1" = 30'