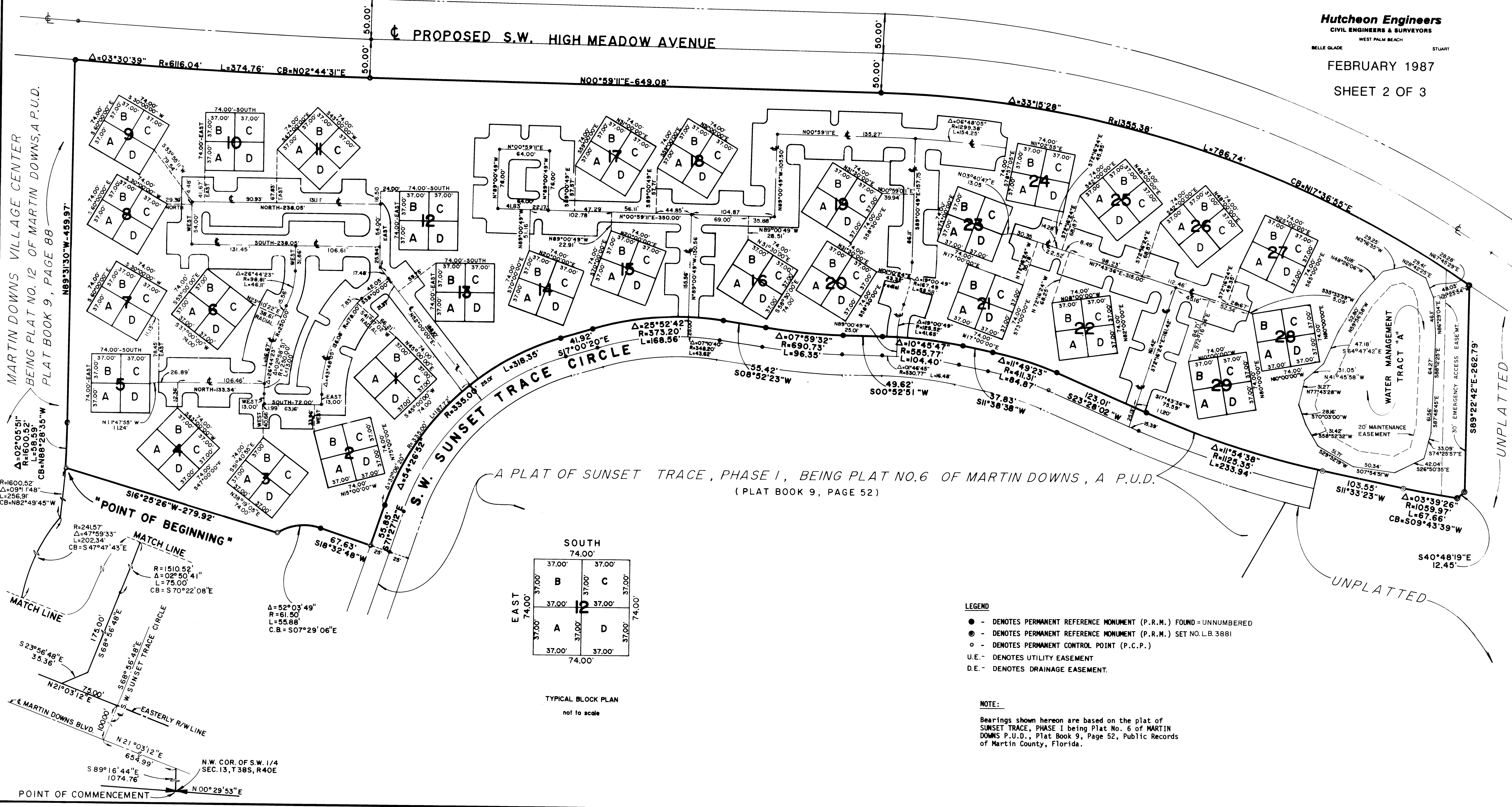


A PLAT OF WELLESLEY AT SUNSET TRACE, PHASE I BEING PLAT NO. 33 OF MARTIN DOWNS, A P.U.D. LYING IN SECTION 13, TOWNSHIP 38 SOUTH, RANGE 40 EAST, MARTIN COUNTY, FLORIDA

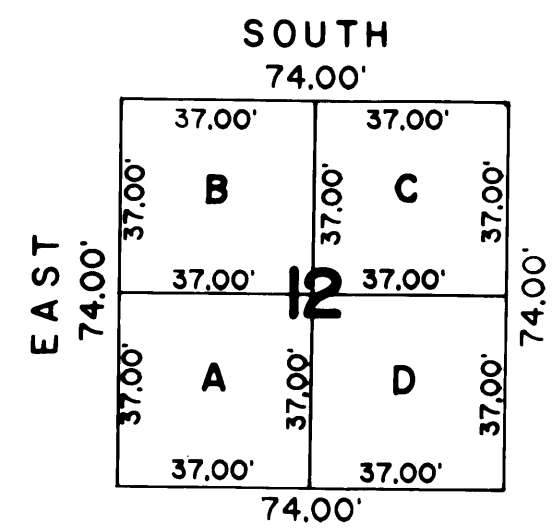
I, MARSHA STILLER, Clerk of the Circuit Court of Martin County, Florida, hereby certify that this plat was filed for record in Plat Book 10, Page 80, Martin County, Florida, public records, this 16th day of June, 1987. MARSHA STILLER, CLERK CIRCUIT COURT MARTIN COUNTY, FLORIDA BY: Deputy Clerk

Hutcheon Engineers CIVIL ENGINEERS & SURVEYORS WEST PALM BEACH, FLORIDA FEBRUARY 1987 SHEET 2 OF 3

MARTIN DOWNS VILLAGE CENTER BEING PLAT NO. 12 OF MARTIN DOWNS, A P.U.D. PLAT BOOK 9, PAGE 88



A PLAT OF SUNSET TRACE, PHASE I, BEING PLAT NO. 6 OF MARTIN DOWNS, A P.U.D. (PLAT BOOK 9, PAGE 52)



- LEGEND: DENOTES PERMANENT REFERENCE MONUMENT (P.R.M.) FOUND = UNNUMBERED, DENOTES PERMANENT REFERENCE MONUMENT (P.R.M.) SET NO. L.B. 3881, DENOTES PERMANENT CONTROL POINT (P.C.P.), DENOTES UTILITY EASEMENT, DENOTES DRAINAGE EASEMENT.

NOTE: Bearings shown hereon are based on the plat of SUNSET TRACE, PHASE I being Plat No. 6 of MARTIN DOWNS P.U.D., Plat Book 9, Page 52, Public Records of Martin County, Florida.