

# PARKWOOD P.U.D. PHASE III-IV-V

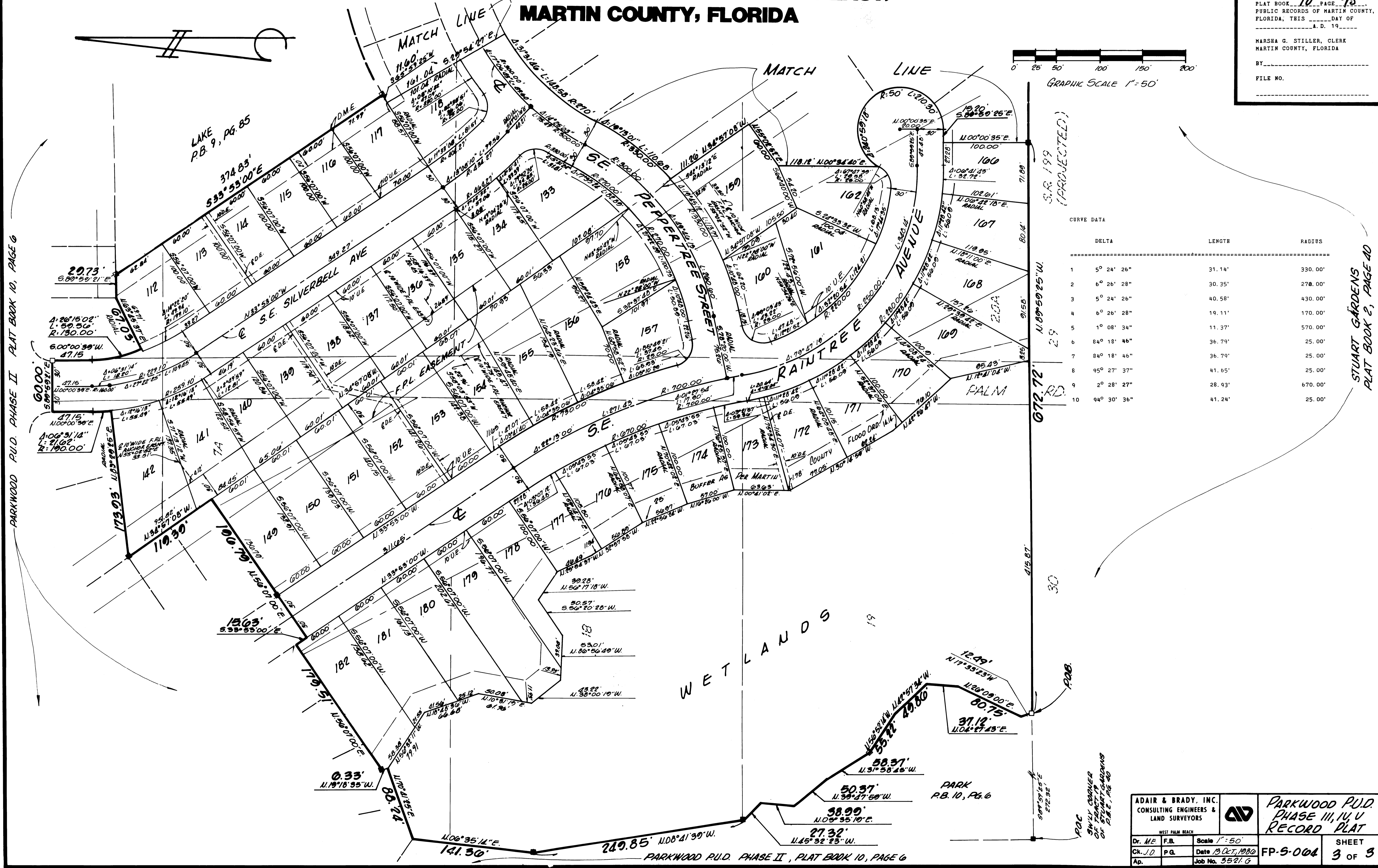
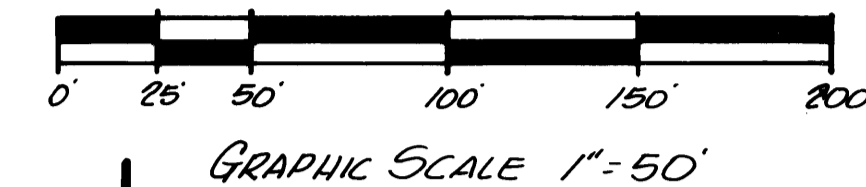
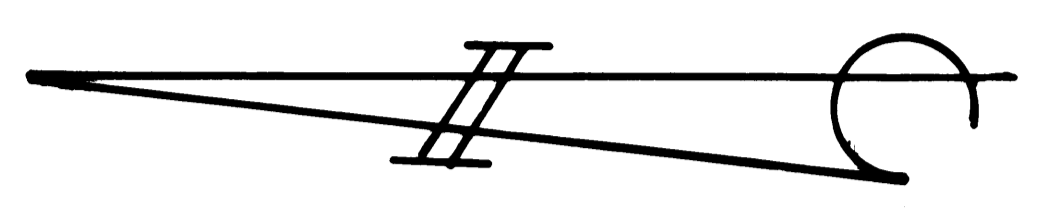
BEING A REPLAT OF A PORTION OF THE PLAT OF STUART GARDENS  
IN SECTION 36, TOWNSHIP 38 SOUTH, RANGE 41 EAST,  
MARTIN COUNTY, FLORIDA

CLERK'S  
RECORDING  
CERTIFICATE

I, MARSHA G. STILLER, COUNTY  
CLERK OF MARTIN COUNTY, FLORIDA,  
HEREBY CERTIFY THAT THIS PLAT  
HAS BEEN FILED FOR RECORD IN  
PLAT BOOK 10, PAGE 75,  
PUBLIC RECORDS OF MARTIN COUNTY,  
FLORIDA, THIS \_\_\_\_\_ DAY OF  
\_\_\_\_\_, A. D. 19\_\_\_\_

MARSHA G. STILLER, CLERK  
MARTIN COUNTY, FLORIDA

BY \_\_\_\_\_  
FILE NO. \_\_\_\_\_



CURVE DATA

	DELTA	LENGTH	RADIUS
1	5° 24' 26"	31.14'	330.00'
2	6° 26' 28"	30.35'	278.00'
3	5° 24' 26"	40.58'	430.00'
4	6° 26' 28"	19.11'	170.00'
5	1° 08' 34"	11.37'	570.00'
6	84° 18' 46"	36.79'	25.00'
7	84° 18' 46"	36.79'	25.00'
8	95° 27' 37"	41.65'	25.00'
9	2° 28' 27"	28.93'	670.00'
10	94° 30' 36"	41.24'	25.00'

PARKWOOD P.U.D. PHASE II PLAT BOOK 10, PAGE 6

STUART GARDENS PLAT BOOK 2, PAGE 40

ADAIR & BRADY, INC. CONSULTING ENGINEERS & LAND SURVEYORS			PARKWOOD P.U.D. PHASE III, IV, V RECORD PLAT	
Dr. M.E. F.B.	Scale 1"=50'		FP-5-004	SHEET 3 OF 3
Ch. J.D. P.G.	Date 13 Oct, 1980			
Ap.	Job No. 5521 G			