

PLAT NO. 29

BEING PARCEL NO. 53

MARTIN DOWNS P.U.D.

LYING IN SECTION 12, TWP. 38 S., RNGE 40 E.,
& SECTION 7, TWP. 38 S., RNGE. 41 E.,
MARTIN COUNTY, FLORIDA.

MARCH, 1987

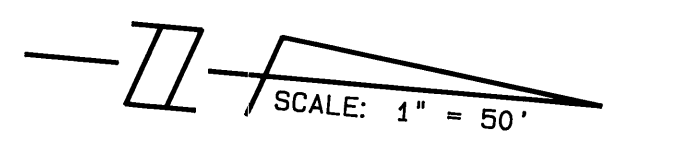
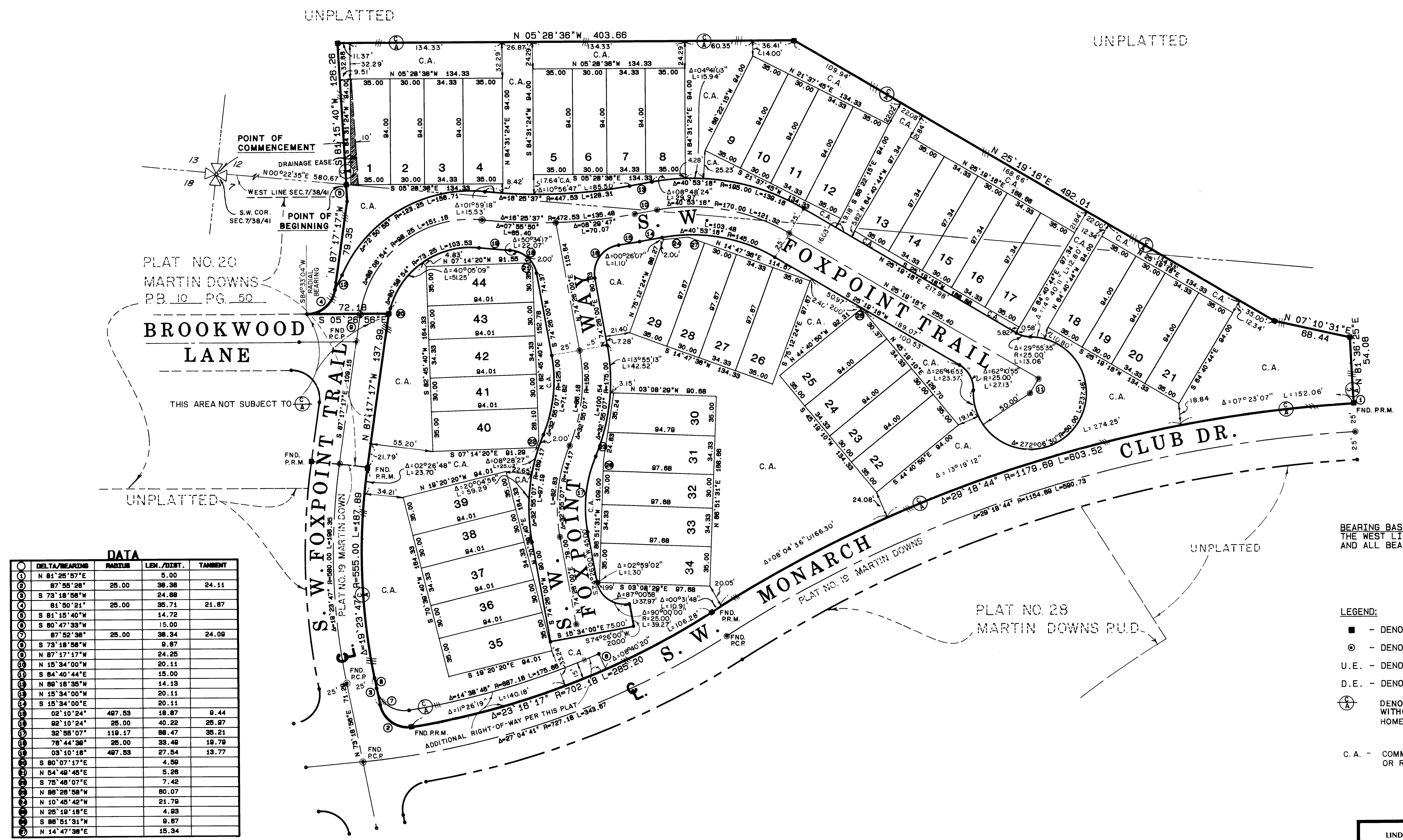
I, Marsha Stiller, Clerk of the Circuit Court of Martin County, Florida, hereby certify that this Plat was filed for record in Plat Book 10, Page 74, Martin County, Florida, Public Records, this _____ day of _____, 1987.

Marsha Stiller, Clerk
Circuit Court
Martin County, Florida

By: _____
Deputy Clerk

File No. _____

(Circuit Court Seal)



SCALE: 1" = 50'

50 0 50 100

DATA				
Δ	DELTA/BEARING	RADIUS	LEN./DIST.	TANGENT
1	N 81° 25' 57" E		5.00	
2	S 73° 18' 58" W	25.00	38.38	24.11
3	S 73° 18' 58" W		24.88	
4	S 73° 18' 58" W		35.71	21.87
5	S 81° 35' 40" W		14.72	
6	S 80° 47' 53" W		15.00	
7	S 73° 18' 58" W	25.00	38.34	24.08
8	S 73° 18' 58" W		5.87	
9	N 87° 17' 17" W		24.25	
10	N 15° 34' 00" W		20.11	
11	S 84° 40' 44" E		15.00	
12	N 88° 18' 35" W		14.13	
13	N 15° 34' 00" W		20.11	
14	S 15° 34' 00" E		20.11	
15	02° 10' 24"	407.53	18.87	9.44
16	02° 10' 24"	25.00	40.22	25.97
17	32° 58' 07"	119.17	88.47	35.21
18	78° 44' 36"	25.00	33.48	19.78
19	03° 10' 18"	407.53	87.54	13.77
20	S 80° 07' 17" E		4.58	
21	N 54° 40' 45" E		5.28	
22	S 75° 48' 07" E		7.42	
23	N 88° 28' 58" W		80.07	
24	N 10° 45' 42" W		21.79	
25	N 25° 19' 18" E		4.93	
26	S 88° 51' 31" W		9.87	
27	N 14° 47' 38" E		15.34	

BEARING BASE:
THE WEST LINE OF SECTION 7 IS TAKEN TO BE N 00° 22' 35" E,
AND ALL BEARINGS SHOWN HEREON ARE RELATIVE THERETO.

- LEGEND:
- - DENOTES P.R.M. (PERMANENT REFERENCE MONUMENT)
 - ⊙ - DENOTES P.C.P. (PERMANENT CONTROL POINT)
 - U.E. - DENOTES UTILITY EASEMENT
 - D.E. - DENOTES DRAINAGE EASEMENT
 - ⊕ - DENOTES "CONTROL OF ACCESS" NO VEHICULAR ACCESS WITHOUT APPROVAL OF MONARCH COUNTRY CLUB HOMEOWNERS ASSOCIATION, INC.
 - C.A. - COMMON AREAS OR ALL AREA OTHER THAN LOTS OR ROADS ARE COMMON AREAS.

LINDAHL, BROWNING FERRARI & HELLSTROM, INC.
Consulting Engineers, Planners & Surveyors
P.O. BOX 727 10 CENTRAL PARKWAY
JUPITER, FLORIDA 33458 SUITE 420
STUART, FLORIDA 33497

2 2